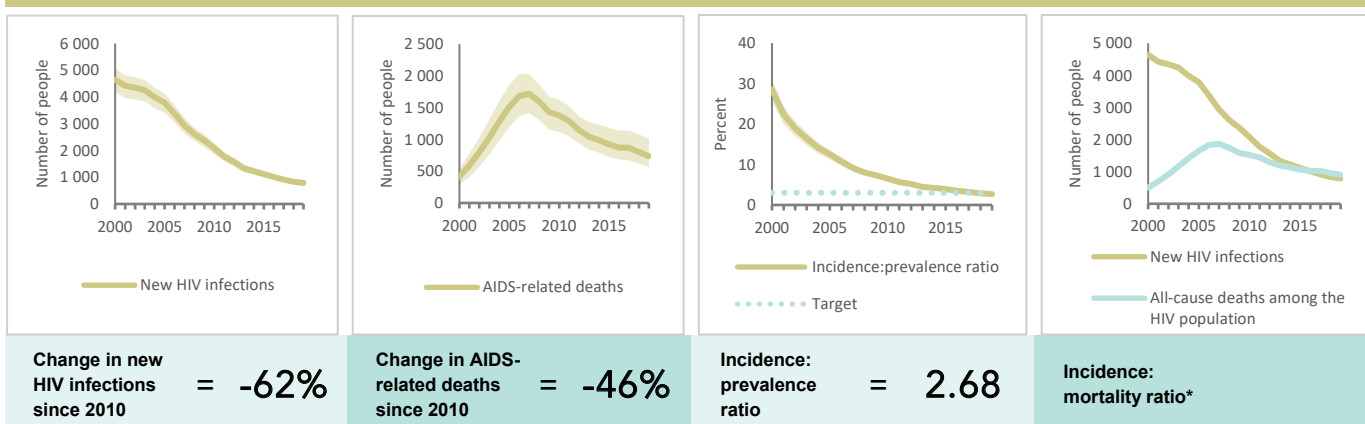


## NEPAL

## EPIDEMIC ESTIMATES

	2010	2015	2019
<b>New HIV infections</b>			
New HIV infections (all ages)	2100 [1900–2300]	1100 [1000–1200]	790 [700–870]
New HIV infections (0–14)	<500 [<200– <500]	<100 [<100– <200]	<100 [<100– <100]
New HIV infections (women, 15+)	590 [510–660]	<500 [<500– <500]	<500 [<500– <500]
New HIV infections (men, 15+)	1300 [1200–1400]	660 [580–720]	<500 [<500–510]
HIV incidence per 1000 population	0.08 [0.07–0.09]	0.04 [0.04–0.05]	0.03 [0.03–0.03]
<b>AIDS-related deaths</b>			
AIDS-related deaths (all ages)	1400 [1100–1600]	920 [730–1200]	740 [570–1000]
AIDS-related deaths (0–14)	<200 [<200– <200]	<100 [<100– <100]	<100 [<100– <100]
AIDS-related deaths (women, 15+)	<500 [<500– <500]	<500 [<200– <500]	<200 [<200– <500]
AIDS-related deaths (men, 15+)	900 [740–1100]	640 [510–800]	570 [<500–780]
<b>People living with HIV</b>			
People living with HIV (all ages)	32 000 [28 000–38 000]	29 000 [25 000–33 000]	30 000 [26 000–34 000]
People living with HIV (0–14)	1700 [1500–2000]	1500 [1300–1700]	1200 [1000–1400]
People living with HIV (women, 15+)	9600 [8400–11 000]	11 000 [9300–12 000]	11 000 [10 000–13 000]
People living with HIV (men, 15+)	21 000 [18 000–25 000]	17 000 [15 000–20 000]	17 000 [15 000–20 000]
HIV prevalence (15–49)	0.2 [0.2–0.2]	0.2 [0.1–0.2]	0.1 [0.1–0.1]

## EPIDEMIC TRANSITION METRICS



\* The incidence:mortality ratio is not published if the country has not achieved antiretroviral therapy coverage of 81% or higher (the testing and treatment target for 2020).

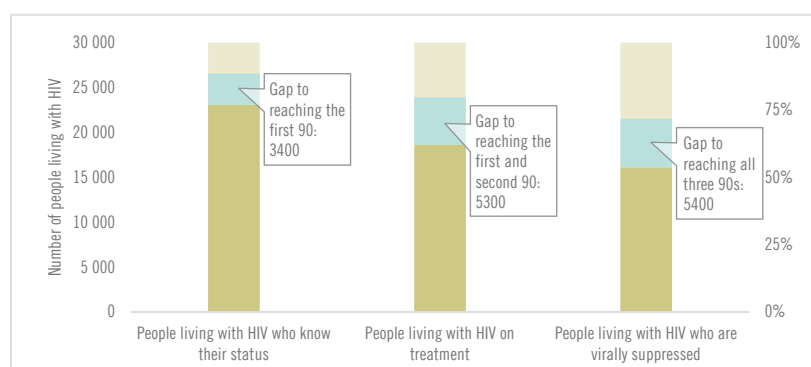
## EXPENDITURES

	Financing sources					Total
	Domestic private	Domestic public	International: PEPFAR	International: Global Fund	International: all others	
Last available report: 2019	US\$ 0	US\$ 18 430	US\$ 26 032	US\$ 63 458	US\$ 6787	US\$ 115 983

**Note:** Global AIDS Monitoring report was not available at the time of publication.

## COUNTRY DATA

## HIV TESTING AND TREATMENT CASCADE



<b>All ages</b>	78% [69–90%]	63% [56–72%] 18 628	55% [48–62%]
<b>Children (0–14)</b>	...% [...–...%]	100% [97–100%] 1 306	80% [69–93%]
<b>Women (15+)</b>	79% [70–89%]	73% [65–82%] 8 275	65% [58–74%]
<b>Men (15+)</b>	77% [66–88%]	53% [46–61%] 9 047	46% [40–53%]

## ELIMINATION OF MOTHER-TO-CHILD TRANSMISSION

	2010	2019
Percentage of pregnant women living with HIV accessing antiretroviral medicines	14% [12–17%]	51% [44–61%]
Final vertical transmission rate including during breastfeeding	42% [40–44%]	29% [26–32%]
Early infant diagnosis	3.5% [2.9–4.3%]	93.3% [78.5– >95%]