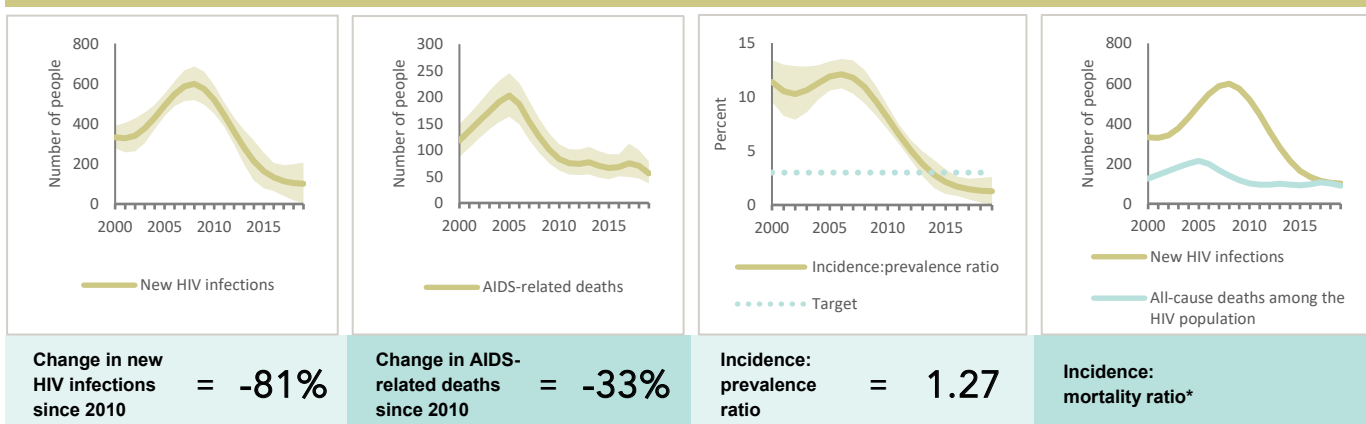


SINGAPORE

EPIDEMIC ESTIMATES

	2010	2015	2019
New HIV infections			
New HIV infections (all ages)	520 [<500–590]	<200 [<100– <500]	<200 [<100– <500]
New HIV infections (0–14)	... [...–...]	... [...–...]	... [...–...]
New HIV infections (women, 15+)	<100 [<100– <100]	<100 [<100– <100]	<100 [<100– <100]
New HIV infections (men, 15+)	<500 [<500–540]	<200 [<100– <500]	<100 [<100– <200]
HIV incidence per 1000 population	0.14 [0.13–0.16]	0.04 [0.02–0.07]	0.03 [0.01–0.05]
AIDS-related deaths			
AIDS-related deaths (all ages)	<100 [<100– <200]	<100 [<100– <100]	<100 [<100– <100]
AIDS-related deaths (0–14)	... [...–...]	... [...–...]	... [...–...]
AIDS-related deaths (women, 15+)	<100 [<100– <100]	<100 [<100– <100]	<100 [<100– <100]
AIDS-related deaths (men, 15+)	<100 [<100– <100]	<100 [<100– <100]	<100 [<100– <100]
People living with HIV			
People living with HIV (all ages)	6500 [5600–7500]	7700 [6500–9000]	7900 [6500–9500]
People living with HIV (0–14)	... [...–...]	... [...–...]	... [...–...]
People living with HIV (women, 15+)	670 [580–770]	730 [620–830]	750 [610–890]
People living with HIV (men, 15+)	5800 [5000–6700]	7000 [5900–8100]	7200 [5900–8600]
HIV prevalence (15–49)	0.3 [0.2–0.3]	0.3 [0.2–0.3]	0.2 [0.2–0.3]

EPIDEMIC TRANSITION METRICS



* The incidence:mortality ratio is not published if the country has not achieved antiretroviral therapy coverage of 81% or higher (the testing and treatment target for 2020).

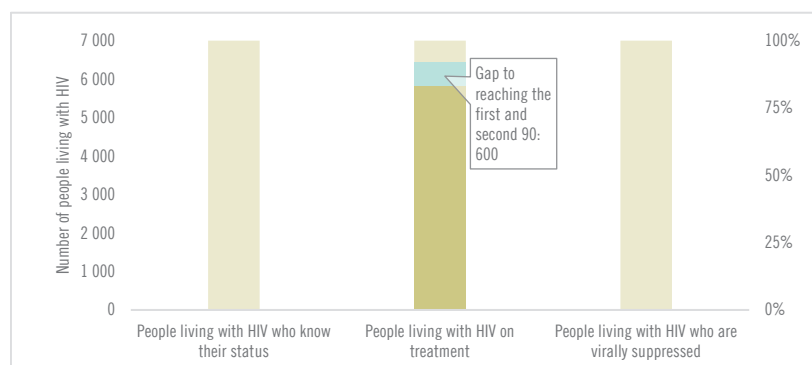
EXPENDITURES

	Financing sources					Total
	Domestic private	Domestic public	International: PEPFAR	International: Global Fund	International: all others	
Last available report: 2017	...	US\$ 52 093 243	US\$ 52 093 243

Note: Global AIDS Monitoring report was not available at the time of publication.

COUNTRY DATA

HIV TESTING AND TREATMENT CASCADE



All ages	...% [...-...%]	73% [60–88%] 5 839	...% [...-...%]
Children (0–14)	...% [...-...%]	...% [...-...%]% [...-...%]
Women (15+)	...% [...-...%]	69% [56–82%] 512	...% [...-...%]
Men (15+)	...% [...-...%]	74% [61–88%] 5 323	...% [...-...%]

ELIMINATION OF MOTHER-TO-CHILD TRANSMISSION

	2010	2019
Percentage of pregnant women living with HIV accessing antiretroviral medicines	...% [...-...%]	...% [...-...%]
Final vertical transmission rate including during breastfeeding	...% [...-...%]	...% [...-...%]
Early infant diagnosis	...% [...-...%]	...% [...-...%]