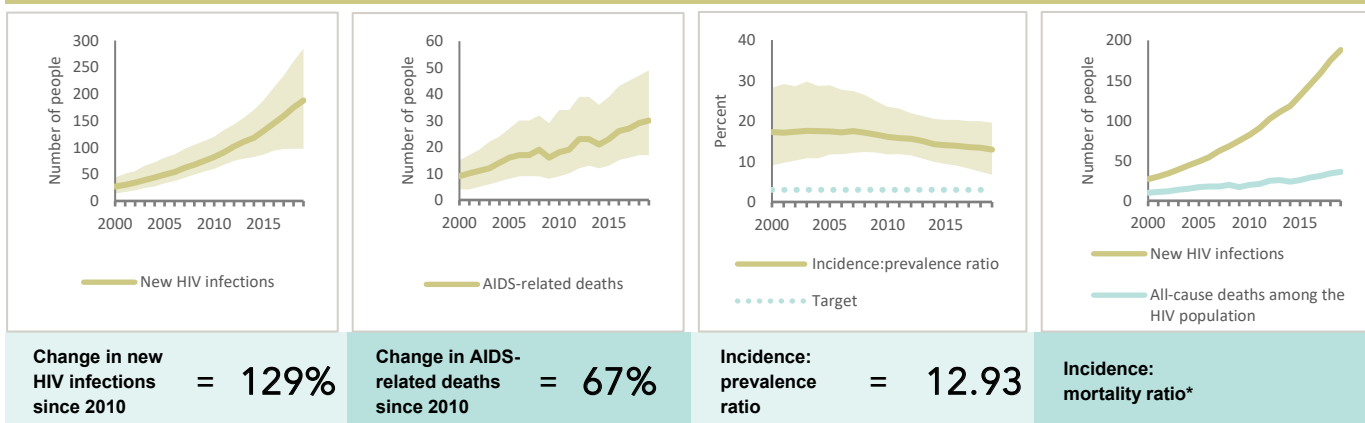


## TIMOR-LESTE

## EPIDEMIC ESTIMATES

	2010	2015	2019
<b>New HIV infections</b>			
New HIV infections (all ages)	<100 [<100– <200]	<200 [<100– <200]	<200 [<100– <500]
New HIV infections (0–14)	... [...–...]	... [...–...]	... [...–...]
New HIV infections (women, 15+)	<100 [<100– <100]	<100 [<100– <100]	<100 [<100– <200]
New HIV infections (men, 15+)	<100 [<100– <100]	<100 [<100– <100]	<100 [<100– <200]
HIV incidence per 1000 population	0.08 [0.06–0.11]	0.11 [0.08–0.16]	0.15 [0.08–0.23]
<b>AIDS-related deaths</b>			
AIDS-related deaths (all ages)	<100 [<100– <100]	<100 [<100– <100]	<100 [<100– <100]
AIDS-related deaths (0–14)	... [...–...]	... [...–...]	... [...–...]
AIDS-related deaths (women, 15+)	<100 [<100– <100]	<100 [<100– <100]	<100 [<100– <100]
AIDS-related deaths (men, 15+)	<100 [<100– <100]	<100 [<100– <100]	<100 [<100– <100]
<b>People living with HIV</b>			
People living with HIV (all ages)	510 [<500–770]	930 [720–1300]	1500 [1000–2000]
People living with HIV (0–14)	... [...–...]	... [...–...]	... [...–...]
People living with HIV (women, 15+)	<500 [<200– <500]	<500 [<500–540]	620 [<500–870]
People living with HIV (men, 15+)	<500 [<200– <500]	<500 [<500–690]	760 [540–1100]
HIV prevalence (15–49)	<0.1 [<0.1–0.1]	0.1 [0.1–0.2]	0.2 [0.1–0.3]

## EPIDEMIC TRANSITION METRICS



\* The incidence:mortality ratio is not published if the country has not achieved antiretroviral therapy coverage of 81% or higher (the testing and treatment target for 2020).

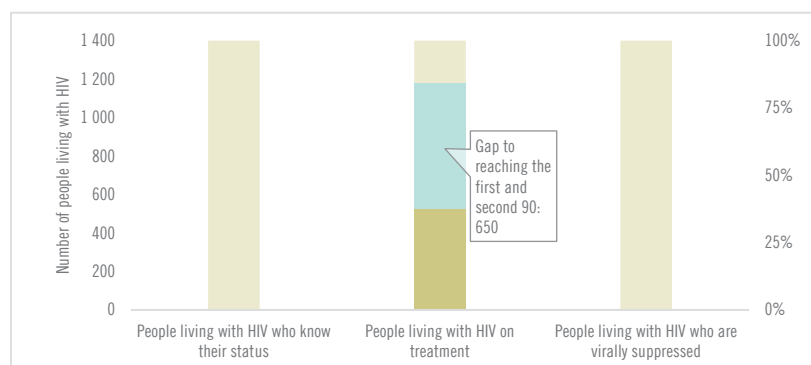
## EXPENDITURES

	Financing sources					Total
	Domestic private	Domestic public	International: PEPFAR	International: Global Fund	International: all others	
Last available report: 2009	...	US\$ 21 000	...	US\$ 1 743 620	US\$ 38 394	US\$ 1 803 014

**Note:** Global AIDS Monitoring report was not available at the time of publication.

## COUNTRY DATA

## HIV TESTING AND TREATMENT CASCADE



<b>All ages</b>	...% [...-...%]	36% [26–50%] 524	...% [...-...%]
<b>Children (0–14)</b>	...% [...-...%]	...% [...-...%] ...	...% [...-...%]
<b>Women (15+)</b>	...% [...-...%]	26% [18–37%] 163	...% [...-...%]
<b>Men (15+)</b>	...% [...-...%]	45% [32–62%] 338	...% [...-...%]

## ELIMINATION OF MOTHER-TO-CHILD TRANSMISSION

	2010	2019
Percentage of pregnant women living with HIV accessing antiretroviral medicines	...% [...-...%]	...% [...-...%]
Final vertical transmission rate including during breastfeeding	...% [...-...%]	...% [...-...%]
Early infant diagnosis	...% [...-...%]	...% [...-...%]