

ANEX
3

**Regional
profiles**
FOR
6 WHO REGIONS

WHO MEMBER STATES 47

Estimates of TB burden^a 2014

	NUMBER (thousands)	RATE (per 100 000 population)
Mortality (excludes HIV+TB)	450 (350–560)	46 (36–58)
Mortality (HIV+TB only)	310 (270–350)	32 (28–36)
Prevalence (includes HIV+TB)	3 200 (2 800–3 600)	330 (288–375)
Incidence (includes HIV+TB)	2 700 (2 400–3 000)	281 (250–313)
Incidence (HIV+TB only)	870 (790–950)	90 (82–99)
Case detection, all forms (%)	48 (43–54)	

Estimates of MDR-TB burden^a 2014

	NEW	RETREATMENT
% of TB cases with MDR-TB	2.1 (0.5–3.7)	11 (6.7–16)
MDR-TB cases among notified pulmonary TB cases	22 000 (5 200–38 000)	11 000 (6 200–15 000)

TB case notifications 2014

	NEW ^b	RELAPSE
Pulmonary, bacteriologically confirmed	635 560	39 782
Pulmonary, clinically diagnosed	399 155	11 217
Extrapulmonary	212 057	3 081

Total new and relapse	1 300 852
Previously treated, excluding relapses	41 548
Total cases notified	1 342 400

Among 1 054 331 reported new and relapse^c cases disaggregated by age, 90 523 (8.6%) cases were aged < 15 years

Among 1 056 629 reported new and relapse^c cases disaggregated by sex, male:female ratio = 1.4

Reported cases of RR-/MDR-TB 2014

	NEW	RETREATMENT	TOTAL ^b
Cases tested for RR-/MDR-TB	40 940 (6.4%)	31 952 (33%)	367 223
Laboratory-confirmed RR-/MDR-TB cases			25 531
Patients started on MDR-TB treatment ^d			17 352

TB/HIV 2014

	NUMBER	(%) ^a
TB patients with known HIV status	1 064 385	79
HIV-positive TB patients	415 657	39
HIV-positive TB patients on co-trimoxazole preventive therapy (CPT)	360 015	89
HIV-positive TB patients on antiretroviral therapy (ART)	317 773	77
HIV-positive people screened for TB	5 166 166	
HIV-positive people provided with IPT	875 886	

Treatment success rate and cohort size

	(%)	COHORT
New and relapse ^c cases registered in 2013	79	1 165 070
Previously treated cases, excluding relapse, registered in 2013	70	70 144
HIV-positive TB cases, all types, registered in 2013	70	326 597
RR-/MDR-TB cases started on second-line treatment in 2012	53	10 246
XDR-TB cases started on second-line treatment in 2012	20	618

Laboratories 2014

	NUMBER OF MEMBER STATES ^f
Smear (per 100 000 population) ≥ 1	28 out of 44
Culture (per 5 million population) ≥ 1	15 out of 44
Drug susceptibility testing (per 5 million population) ≥ 1	10 out of 44

Financing TB control (low- and middle-income countries)^{g,§} 2015

National TB programme budget (US\$ millions)	1 080
% Funded domestically	34
% Funded internationally	29
% Unfunded	37

Data are as reported to WHO. Estimates of TB and MDR-TB burden are produced by WHO in consultation with countries.

^a Ranges represent uncertainty intervals.

^b Includes cases with unknown previous TB treatment history.

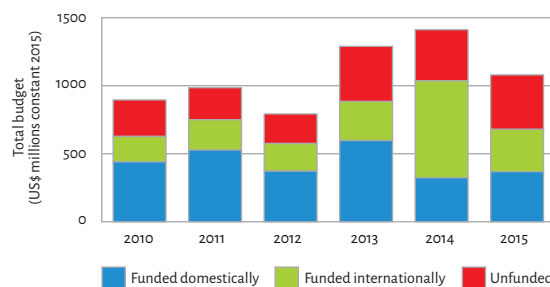
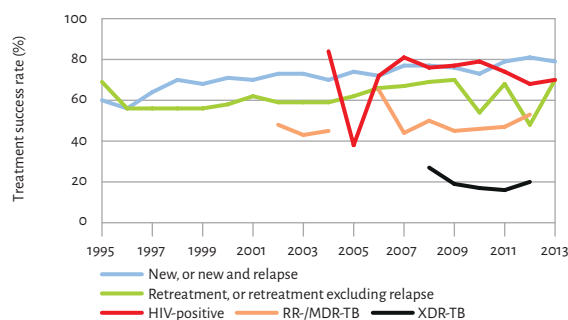
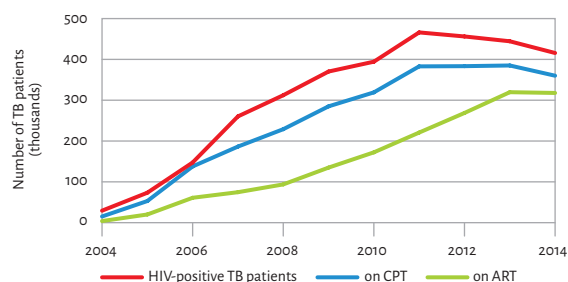
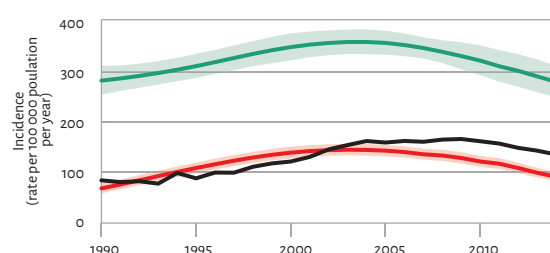
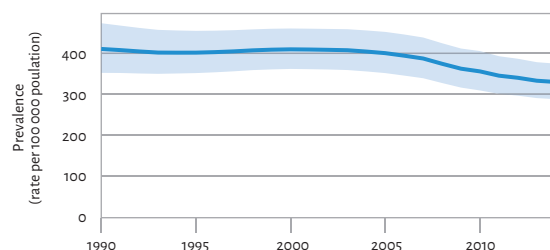
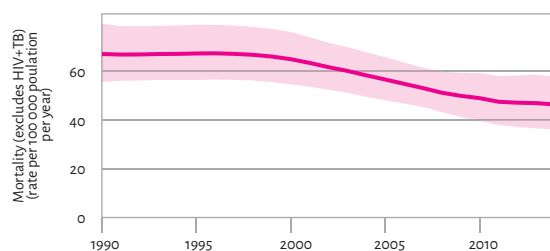
^c Some countries reported on new cases only.

^d Includes patients diagnosed before 2014 and patients who were not laboratory-confirmed as having RR-/MDR-TB.

^e Calculations exclude countries with missing numerators or denominators.

^f Data are not collected from all Member States.

^g Financing indicators exclude funding for general healthcare services provided outside NTPs.



WHO MEMBER STATES 35 | OTHER COUNTRIES AND TERRITORIES 11

Estimates of TB burden^a 2014

	NUMBER (thousands)	RATE (per 100 000 population)
Mortality (excludes HIV+TB)	17 (16–18)	1.7 (1.6–1.8)
Mortality (HIV+TB only)	6 (5–7)	0.61 (0.53–0.69)
Prevalence (includes HIV+TB)	350 (270–440)	36 (28–45)
Incidence (includes HIV+TB)	280 (270–290)	28 (27–29)
Incidence (HIV+TB only)	36 (34–38)	3.7 (3.5–3.9)
Case detection, all forms (%)	77 (75–81)	

Estimates of MDR-TB burden^a 2014

	NEW	RETREATMENT
% of TB cases with MDR-TB	2.4 (1.3–3.5)	11 (6.5–16)
MDR-TB cases among notified pulmonary TB cases	4 000 (2 200–5 900)	3 000 (1 700–4 200)

TB case notifications 2014

	NEW ^b	RELAPSE
Pulmonary, bacteriologically confirmed	127 864	10 193
Pulmonary, clinically diagnosed	40 746	2 918
Extrapulmonary	32 501	1 021
Total new and relapse	215 243	
Previously treated, excluding relapses	13 233	
Total cases notified	228 476	

Among 208 839 reported new and relapse^c cases disaggregated by age, 10 489 (5.0%) cases were aged < 15 years

Among 210 774 reported new and relapse^c cases disaggregated by sex, male:female ratio = 1.7

Reported cases of RR-/MDR-TB 2014

	NEW	RETREATMENT	TOTAL ^b
Cases tested for RR-/MDR-TB	30 531 (24%)	8 724 (32%)	60 468
Laboratory-confirmed RR-/MDR-TB cases			3 745
Patients started on MDR-TB treatment ^d			3 568

TB/HIV 2014

	NUMBER	(%) ^e
TB patients with known HIV status	169 141	74
HIV-positive TB patients	21 913	13
HIV-positive TB patients on co-trimoxazole preventive therapy (CPT)	5 719	52
HIV-positive TB patients on antiretroviral therapy (ART)	7 209	63
HIV-positive people screened for TB	56 856	
HIV-positive people provided with IPT	28 556	

Treatment success rate and cohort size

	(%)	COHORT
New and relapse ^c cases registered in 2013	75	200 726
Previously treated cases, excluding relapse, registered in 2013	48	14 753
HIV-positive TB cases, all types, registered in 2013	53	19 816
RR-/MDR-TB cases started on second-line treatment in 2012	57	2 866
XDR-TB cases started on second-line treatment in 2012	30	67

Laboratories 2014

	NUMBER OF MEMBER STATES ^f
Smear (per 100 000 population) ≥ 1	19 out of 23
Culture (per 5 million population) ≥ 1	20 out of 23
Drug susceptibility testing (per 5 million population) ≥ 1	6 out of 23

Financing TB control (low- and middle-income countries)^g 2015

National TB programme budget (US\$ millions)	285
% Funded domestically	71
% Funded internationally	7.3
% Unfunded	22

Data are as reported to WHO. Estimates of TB and MDR-TB burden are produced by WHO in consultation with countries.

^a Ranges represent uncertainty intervals.

^b Includes cases with unknown previous TB treatment history.

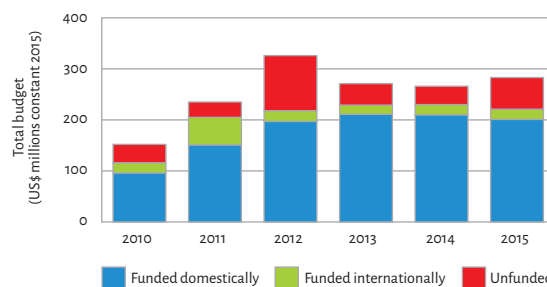
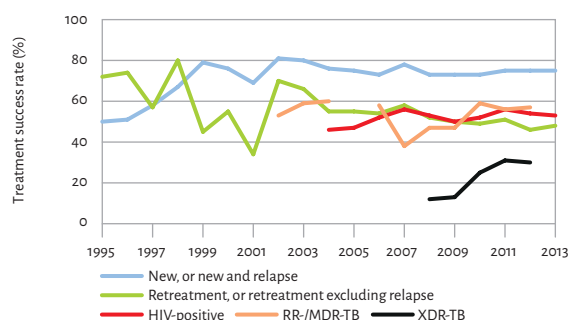
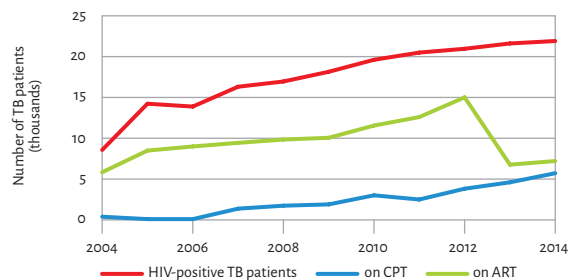
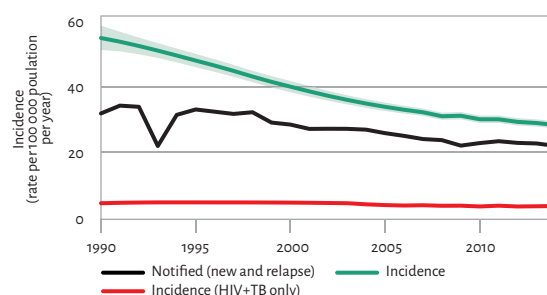
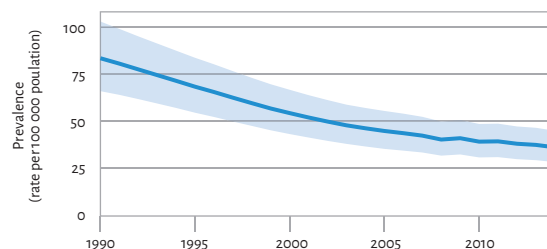
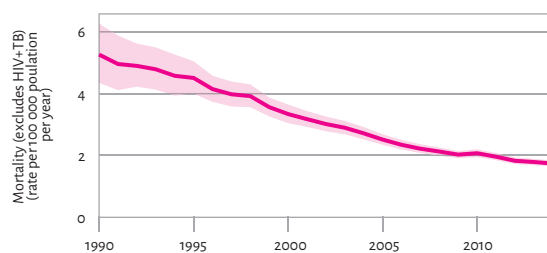
^c Some countries reported on new cases only.

^d Includes patients diagnosed before 2014 and patients who were not laboratory-confirmed as having RR-/MDR-TB.

^e Calculations exclude countries with missing numerators or denominators.

^f Data are not collected from all Member States.

^g Financing indicators exclude funding for general healthcare services provided outside NTPs.



WHO MEMBER STATES 21 | OTHER COUNTRIES AND TERRITORIES 1

Estimates of TB burden^a 2014

	NUMBER (thousands)	RATE (per 100 000 population)
Mortality (excludes HIV+TB)	88 (43–150)	14 (6.8–23)
Mortality (HIV+TB only)	3 (3–4)	0.51 (0.41–0.62)
Prevalence (includes HIV+TB)	1 000 (880–1 200)	160 (139–183)
Incidence (includes HIV+TB)	740 (610–890)	117 (96–140)
Incidence (HIV+TB only)	12 (10–15)	1.9 (1.6–2.3)
Case detection, all forms (%)	61 (51–75)	

Estimates of MDR-TB burden^a 2014

	NEW	RETREATMENT
% of TB cases with MDR-TB	3.2 (2.3–4.1)	18 (12–25)
MDR-TB cases among notified pulmonary TB cases	11 000 (7 700–14 000)	4 700 (3 000–6 400)

TB case notifications 2014

	NEW ^b	RELAPSE
Pulmonary, bacteriologically confirmed	183 630	12 368
Pulmonary, clinically diagnosed	151 696	866
Extrapulmonary	103 959	87

Total new and relapse	453 393
Previously treated, excluding relapses	12 284
Total cases notified	465 677

Among 441 071 reported new and relapse^c cases disaggregated by age, 42 028 (9.5%) cases were aged <15 years

Among 449 016 reported new and relapse^c cases disaggregated by sex, male:female ratio = 1.0

Reported cases of RR-/MDR-TB 2014

	NEW	RETREATMENT	TOTAL ^b
Cases tested for RR-/MDR-TB	8 404 (4.6%)	13 703 (52%)	30 519
Laboratory-confirmed RR-/MDR-TB cases			4 348
Patients started on MDR-TB treatment ^d			3 423

TB/HIV 2014

	NUMBER	(%) ^e
TB patients with known HIV status	67 624	15
HIV-positive TB patients	1 629	2.4
HIV-positive TB patients on co-trimoxazole preventive therapy (CPT)	686	67
HIV-positive TB patients on antiretroviral therapy (ART)	943	63
HIV-positive people screened for TB	14 775	
HIV-positive people provided with IPT	478	

Treatment success rate and cohort size

	(%)	COHORT
New and relapse ^c cases registered in 2013	91	431 622
Previously treated cases, excluding relapse, registered in 2013	76	11 281
HIV-positive TB cases, all types, registered in 2013	60	681
RR-/MDR-TB cases started on second-line treatment in 2012	65	1 271
XDR-TB cases started on second-line treatment in 2012	33	43

Laboratories 2014

	NUMBER OF MEMBER STATES ^f
Smear (per 100 000 population) ≥ 1	3 out of 15
Culture (per 5 million population) ≥ 1	9 out of 15
Drug susceptibility testing (per 5 million population) ≥ 1	4 out of 15

Financing TB control (low- and middle-income countries)^{f,g} 2015

National TB programme budget (US\$ millions)	183
% Funded domestically	46
% Funded internationally	43
% Unfunded	11

Data are as reported to WHO. Estimates of TB and MDR-TB burden are produced by WHO in consultation with countries.

^a Ranges represent uncertainty intervals.

^b Includes cases with unknown previous TB treatment history.

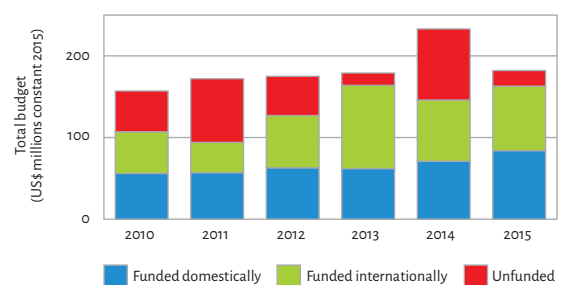
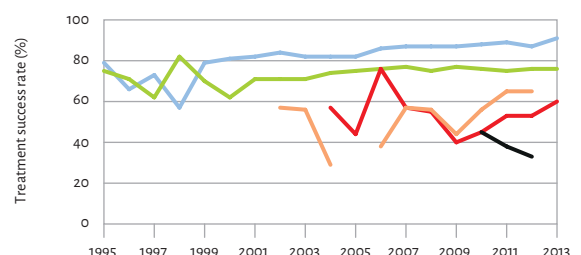
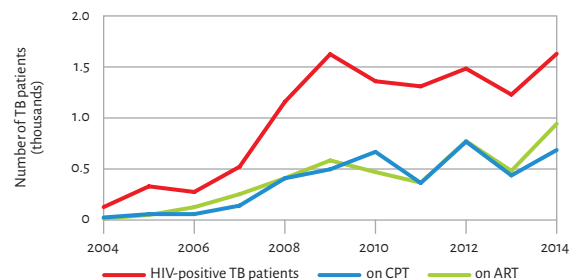
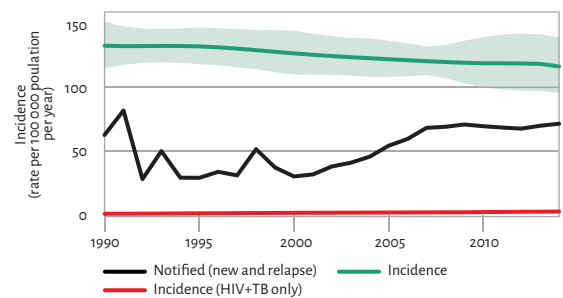
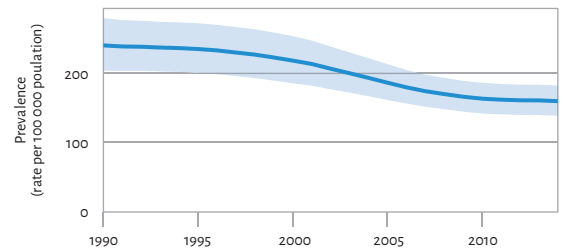
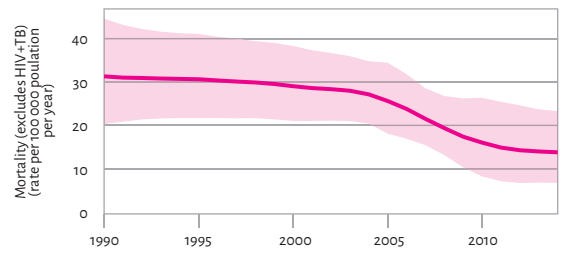
^c Some countries reported on new cases only.

^d Includes patients diagnosed before 2014 and patients who were not laboratory-confirmed as having RR-/MDR-TB.

^e Calculations exclude countries with missing numerators or denominators.

^f Data are not collected from all Member States.

^g Financing indicators exclude funding for general healthcare services provided outside NTPs.



WHO MEMBER STATES 53 | OTHER COUNTRIES AND TERRITORIES 1

Estimates of TB burden^a 2014

	NUMBER (thousands)	RATE (per 100 000 population)
Mortality (excludes HIV+TB)	33 (33–34)	3.7 (3.6–3.8)
Mortality (HIV+TB only)	3 (3–4)	0.35 (0.3–0.4)
Prevalence (includes HIV+TB)	440 (330–560)	48 (36–61)
Incidence (includes HIV+TB)	340 (320–350)	37 (35–39)
Incidence (HIV+TB only)	20 (18–21)	2.2 (2–2.4)
Case detection, all forms (%)	79 (75–83)	

Estimates of MDR-TB burden^a 2014

	NEW	RETREATMENT
% of TB cases with MDR-TB	15 (10–19)	48 (43–53)
MDR-TB cases among notified pulmonary TB cases	28 000 (20 000–37 000)	44 000 (39 000–48 000)

TB case notifications 2014

	NEW ^b	RELAPSE
Pulmonary, bacteriologically confirmed	112 416	23 935
Pulmonary, clinically diagnosed	76 759	11 483
Extrapulmonary	39 175	2 290

Total new and relapse	266 058
Previously treated, excluding relapses	55 363
Total cases notified	321 421

Among 260 844 reported new and relapse^c cases disaggregated by age, 9 898 (3.8%) cases were aged < 15 years

Among 261 563 reported new and relapse^c cases disaggregated by sex, male:female ratio = 2.0

Reported cases of RR-/MDR-TB 2014

	NEW	RETREATMENT	TOTAL ^b
Cases tested for RR-/MDR-TB	108 569 (97%)	48 234 (52%)	161 202
Laboratory-confirmed RR-/MDR-TB cases			42 293
Patients started on MDR-TB treatment ^d			49 074

TB/HIV 2014

	NUMBER	(%) ^a
TB patients with known HIV status	199 810	62
HIV-positive TB patients	16 630	8.2
HIV-positive TB patients on co-trimoxazole preventive therapy (CPT)	5 452	53
HIV-positive TB patients on antiretroviral therapy (ART)	6 279	58
HIV-positive people screened for TB	37 266	
HIV-positive people provided with IPT	21 014	

Treatment success rate and cohort size

	(%)	COHORT
New and relapse ^c cases registered in 2013	75	2 40 741
Previously treated cases, excluding relapse, registered in 2013	58	30 125
HIV-positive TB cases, all types, registered in 2013	47	9 504
RR-/MDR-TB cases started on second-line treatment in 2012	49	37 638
XDR-TB cases started on second-line treatment in 2012	26	1 563

Laboratories 2014

	NUMBER OF MEMBER STATES ^f
Smear (per 100 000 population) ≥ 1	10 out of 53
Culture (per 5 million population) ≥ 1	44 out of 53
Drug susceptibility testing (per 5 million population) ≥ 1	39 out of 53

Financing TB control (low- and middle-income countries)^{f,g} 2015

National TB programme budget (US\$ millions)	2 513
% Funded domestically	93
% Funded internationally	4.1
% Unfunded	2.5

Data are as reported to WHO. Estimates of TB and MDR-TB burden are produced by WHO in consultation with countries.

^a Ranges represent uncertainty intervals.

^b Includes cases with unknown previous TB treatment history.

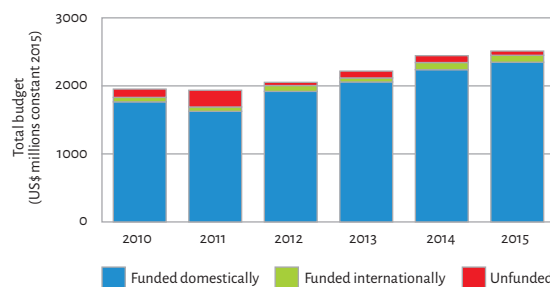
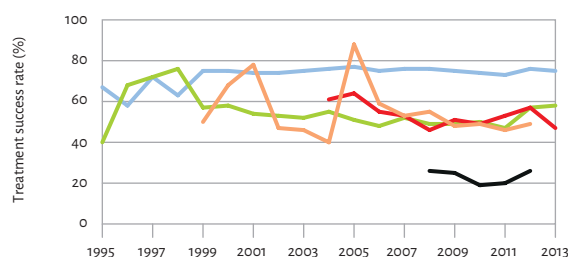
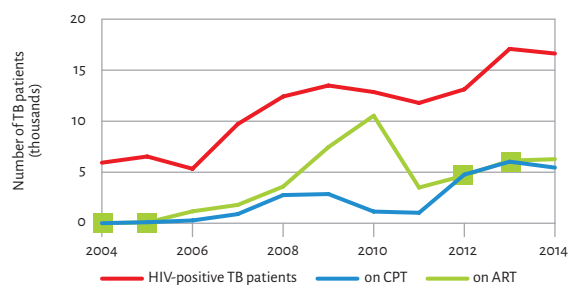
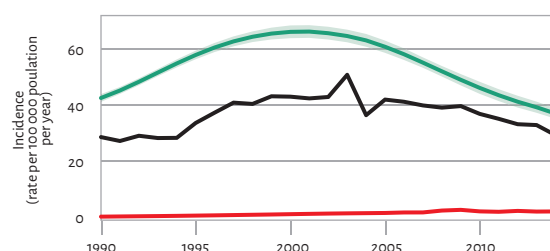
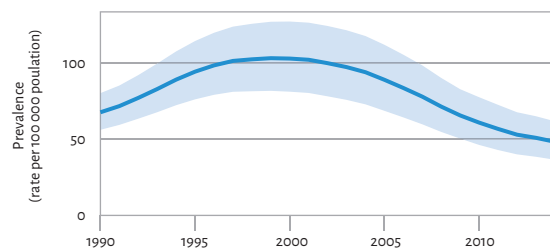
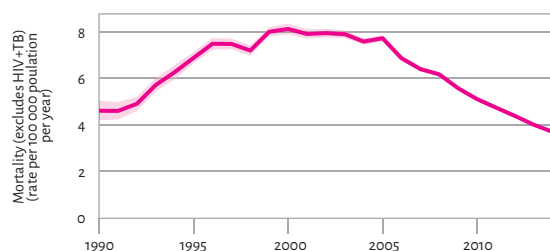
^c Some countries reported on new cases only.

^d Includes patients diagnosed before 2014 and patients who were not laboratory-confirmed as having RR-/MDR-TB.

^e Calculations exclude countries with missing numerators or denominators.

^f Data are not collected from all Member States.

^g Financing indicators exclude funding for general healthcare services provided outside NTPs.



WHO MEMBER STATES 11

Estimates of TB burden^a 2014

	NUMBER (thousands)	RATE (per 100 000 population)
Mortality (excludes HIV+TB)	460 (350–570)	24 (19–30)
Mortality (HIV+TB only)	62 (51–74)	3.3 (2.7–3.9)
Prevalence (includes HIV+TB)	5 400 (4 400–6 500)	286 (233–343)
Incidence (includes HIV+TB)	4 000 (3 700–4 400)	211 (192–232)
Incidence (HIV+TB only)	210 (180–240)	11 (9.4–12)
Case detection, all forms (%)	62 (56–68)	

Estimates of MDR-TB burden^a 2014

	NEW	RETREATMENT
% of TB cases with MDR-TB	2.2 (1.9–2.6)	16 (14–17)
MDR-TB cases among notified pulmonary TB cases	40 000 (35 000–47 000)	59 000 (52 000–65 000)

TB case notifications 2014

	NEW ^b	RELAPSE
Pulmonary, bacteriologically confirmed	1 188 654	152 498
Pulmonary, clinically diagnosed	632 418	117 970
Extrapulmonary	389 819	715
Total new and relapse	2 482 074	
Previously treated, excluding relapses	98 531	
Total cases notified	2 580 605	

Among 2 416 375 reported new and relapse^c cases disaggregated by age, 168 310 (7.0%) cases were aged <15 years

Among 2 435 769 reported new and relapse^c cases disaggregated by sex, male:female ratio = 1.8

Reported cases of RR-/MDR-TB 2014

	NEW	RETREATMENT	TOTAL ^b
Cases tested for RR-/MDR-TB	45 056 (3.8%)	247 336 (67%)	350 871
Laboratory-confirmed RR-/MDR-TB cases			33 264
Patients started on MDR-TB treatment ^d			28 536

TB/HIV 2014

	NUMBER	(%) ^e
TB patients with known HIV status	1 171 258	45
HIV-positive TB patients	60 235	5.1
HIV-positive TB patients on co-trimoxazole preventive therapy (CPT)	51 141	85
HIV-positive TB patients on antiretroviral therapy (ART)	51 231	85
HIV-positive people screened for TB	1 183 007	
HIV-positive people provided with IPT	3 049	

Treatment success rate and cohort size

	(%)	COHORT
New and relapse ^c cases registered in 2013	88	2 100 508
Previously treated cases, excluding relapse, registered in 2013	67	196 439
HIV-positive TB cases, all types, registered in 2013	74	54 235
RR-/MDR-TB cases started on second-line treatment in 2012	49	11 566
XDR-TB cases started on second-line treatment in 2012	37	108

Laboratories 2014

	NUMBER OF MEMBER STATES ^f
Smear (per 100 000 population) ≥ 1	9 out of 11
Culture (per 5 million population) ≥ 1	3 out of 11
Drug susceptibility testing (per 5 million population) ≥ 1	2 out of 11

Financing TB control (low- and middle-income countries)^g 2015

National TB programme budget (US\$ millions)	559
% Funded domestically	33
% Funded internationally	45
% Unfunded	22

Data are as reported to WHO. Estimates of TB and MDR-TB burden are produced by WHO in consultation with countries.

^a Ranges represent uncertainty intervals.

^b Includes cases with unknown previous TB treatment history.

^c Some countries reported on new cases only.

^d Includes patients diagnosed before 2014 and patients who were not laboratory-confirmed as having RR-/MDR-TB.

^e Calculations exclude countries with missing numerators or denominators.

^f Data are not collected from all Member States.

^g Financing indicators exclude funding for general healthcare services provided outside NTPs.

