



The Hong Kong STD/AIDS update is a composite report on HIV/AIDS reporting and STI caseload statistics published 3 monthly. The current issue has the updated information up to March 2016.

**SPP Surveillance Team:**

*Dr. Alfred SIT*

*Mr. Steve YIM*

**Correspondence to:**

*Special Preventive Programme,*

*Centre for Health Protection, Department of Health*

*c/o Red Ribbon Centre, 2/F Wang Tau Hom Jockey Club Clinic,*

*200 Junction Road East, Kowloon, Hong Kong*

*Tel: (852) 3143 7200 Fax: (852) 2338 0534*

*E-mail: [aids@dh.gov.hk](mailto:aids@dh.gov.hk)*

## List of Tables / Figures

<b>LIST OF TABLES / FIGURES</b>	<b>2</b>
<b>1. NUMBER OF HIV/AIDS REPORTED</b>	<b>4</b>
TABLE 1.1 SUMMARY TABLE ON THE REPORTED NUMBER OF HIV/AIDS	4
CHART 1.1 NUMBER OF HIV/AIDS REPORTED	7
<b>2. GENDER DISTRIBUTION OF REPORTED HIV/AIDS</b>	<b>8</b>
TABLE 2.1 GENDER DISTRIBUTION OF REPORTED HIV	8
CHART 2.1 GENDER DISTRIBUTION OF REPORTED HIV BY QUARTER	9
CHART 2.2 GENDER DISTRIBUTION OF REPORTED HIV BY YEAR	10
TABLE 2.2 GENDER DISTRIBUTION OF REPORTED AIDS	11
CHART 2.3 GENDER DISTRIBUTION OF REPORTED AIDS BY QUARTER	12
CHART 2.4 GENDER DISTRIBUTION OF REPORTED AIDS BY YEAR	13
<b>3. ETHNICITY OF REPORTED HIV/AIDS</b>	<b>14</b>
TABLE 3.1 DISTRIBUTION OF ETHNICITY OF REPORTED HIV	14
CHART 3.1 DISTRIBUTION OF ETHNICITY OF REPORTED HIV	15
TABLE 3.2 DISTRIBUTION OF ETHNICITY OF REPORTED AIDS	16
CHART 3.2 DISTRIBUTION OF ETHNICITY OF REPORTED AIDS	17
<b>4. AGE DISTRIBUTION OF REPORTED HIV/AIDS</b>	<b>18</b>
TABLE 4.1 AGE DISTRIBUTION OF REPORTED HIV	18
CHART 4.1 AGE DISTRIBUTION OF REPORTED HIV	19
CHART 4.2 AGE GROUP & GENDER OF TOTAL REPORTED HIV	20
TABLE 4.2 AGE DISTRIBUTION OF REPORTED AIDS	21
CHART 4.3 AGE DISTRIBUTION OF REPORTED AIDS	22
CHART 4.4 AGE GROUP & GENDER OF TOTAL REPORTED AIDS	23
<b>5. EXPOSURE CATEGORIES OF REPORTED HIV/AIDS</b>	<b>24</b>
TABLE 5.1 EXPOSURE CATEGORIES OF REPORTED HIV	24
CHART 5.1 EXPOSURE CATEGORIES OF REPORTED HIV	25
TABLE 5.2 EXPOSURE CATEGORIES OF REPORTED AIDS	26
CHART 5.2 EXPOSURE CATEGORIES OF REPORTED AIDS	27
<b>6. RATIO (HETEROSEXUAL : HOMOSEXUAL / BISEXUAL) OF SEXUALLY ACQUIRED HIV INFECTION IN MEN</b>	<b>28</b>

TABLE 6.1 RATIO OF SEXUALLY ACQUIRED INFECTION IN MEN WITH REPORTED HIV/AIDS (HETEROSEXUAL : HOMO / BISEXUAL) BY QUARTER	28
TABLE 6.2 RATIO OF SEXUALLY ACQUIRED INFECTION IN MEN WITH REPORTED HIV/AIDS (HETEROSEXUAL : HOMO / BISEXUAL) BY YEAR	29
<b>7. INJECTING DRUG USERS IN REPORTED HIV/AIDS</b>	<b>30</b>
TABLE 7.1 INJECTING DRUG USERS IN REPORTED HIV/AIDS	30
TABLE 7.2 NUMBER OF INJECTING DRUG USER IN REPORTED HIV/AIDS BY YEAR	31
<b>8. SOURCE OF REFERRAL OF REPORTED HIV/AIDS</b>	<b>32</b>
TABLE 8.1 SOURCE OF REFERRAL OF REPORTED HIV	32
CHART 8.1 SOURCE OF REFERRAL OF REPORTED HIV	33
TABLE 8.2 SOURCE OF REFERRAL OF REPORTED AIDS	34
CHART 8.2 SOURCE OF REFERRAL OF REPORTED AIDS	35
<b>9. DISTRIBUTION OF AIDS DEFINING ILLNESSES</b>	<b>36</b>
TABLE 9.1 DISTRIBUTION OF AIDS DEFINING ILLNESS OF REPORTED AIDS	36
CHART 9.1 AIDS DEFINING ILLNESS OF TOTAL REPORTED AIDS	37
CHART 9.2 AIDS DEFINING ILLNESS OF REPORTED AIDS BY YEAR	38
<b>10. REPORTED SEXUALLY TRANSMITTED INFECTIONS (STIS) DIAGNOSED IN SOCIAL HYGIENE SERVICE</b>	<b>39</b>
TABLE 10.1 SUMMARY TABLE ON THE REPORTED STIS DIAGNOSED IN SOCIAL HYGIENE SERVICE	39
<b>11. GENDER DISTRIBUTION OF REPORTED STIS</b>	<b>41</b>
TABLE 11.1 GENDER DISTRIBUTION OF SELECTED STI REPORTED BY SOCIAL HYGIENE SERVICE	41
TABLE 11.2 GENDER DISTRIBUTION OF REPORTED STI BY CLINIC	43
<b>12. CLINIC DISTRIBUTION</b>	<b>44</b>
CHART 12.1 NUMBER OF NEWLY REPORT STI IN Q1 2016 BY CLINIC (MALE CLIENTS)	44
CHART 12.2 NUMBER OF NEWLY REPORT STI IN Q1 2016 BY CLINIC (FEMALE CLIENTS)	45

## 1. Number of HIV/AIDS reported

**Table 1.1 Summary table on the reported number of HIV/AIDS**

	This quarter (Jan - Mar 2016)		Last quarter (Oct - Dec 2015)		Same quarter last year (Jan - Mar 2015)		Cumulative (1984 - Mar 2016)	
	HIV	AIDS	HIV	AIDS	HIV	AIDS	HIV	AIDS
<b>Sex</b>								
Male	121	15	159	27	145	26	6339	1398
Female	26	2	25	2	28	5	1526	274
<b>Ethnicity/race</b>								
Chinese	96	14	129	23	132	21	5,345	1,284
Non-Chinese	39	3	43	6	29	10	2,373	388
<i>Asian</i>	14	0	21	4	15	6	1,180	255
<i>White</i>	6	1	8	1	5	2	516	94
<i>Black</i>	8	2	5	1	3	1	189	35
<i>Others</i>	11	0	9	0	6	1	488	4
Unknown	12	0	12	0	12	0	147	0

**(to be cont'd)**

**Table 1.1 (cont'd)**

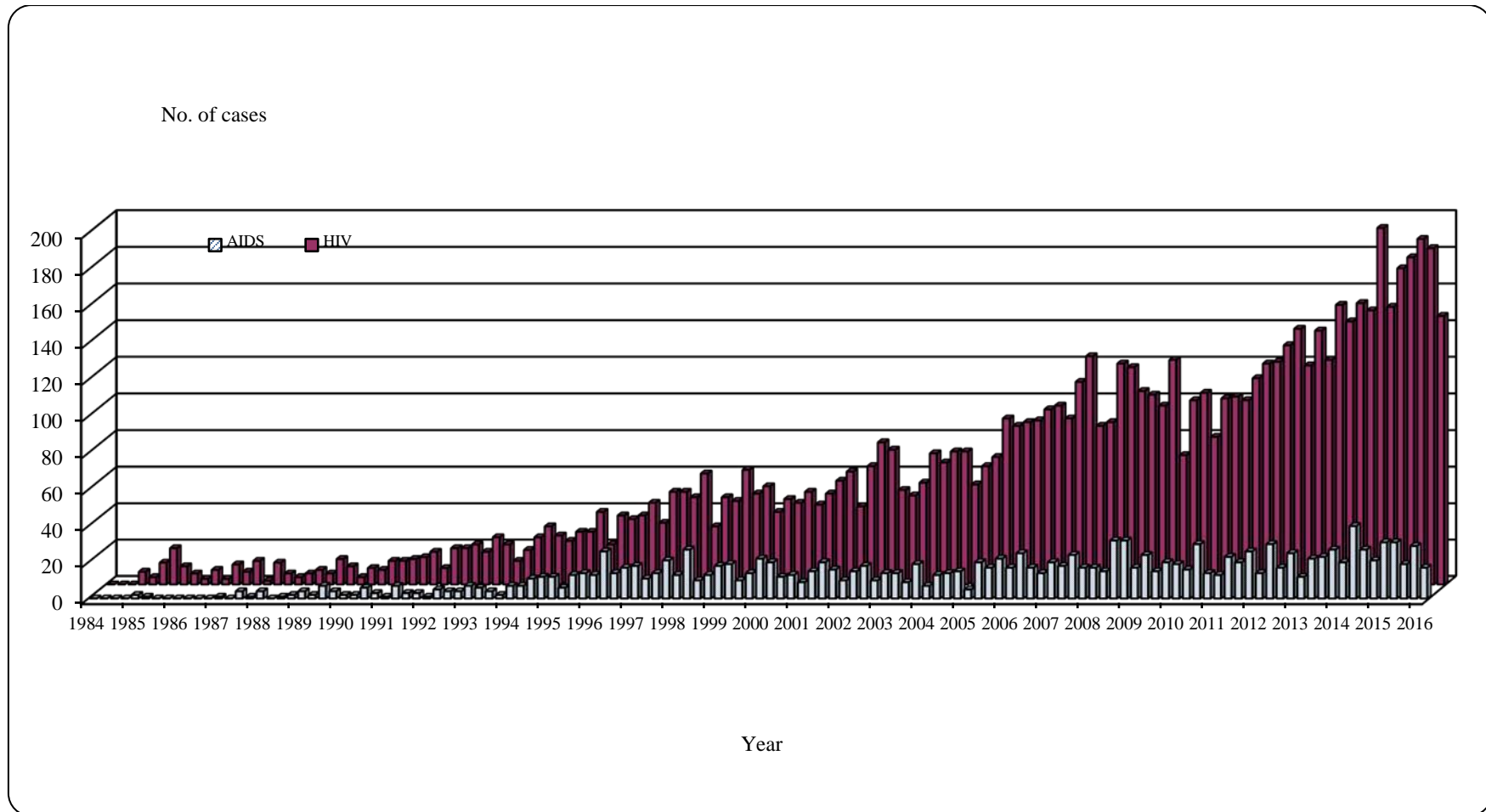
	This quarter (Jan - Mar 2016)		Last quarter (Oct - Dec 2015)		Same quarter last year (Jan - Mar 2015)		Cumulative (1984 - Mar 2016)	
	HIV	AIDS	HIV	AIDS	HIV	AIDS	HIV	AIDS
<b>Age at diagnosis</b>								
Adult	147	17	183	29	173	31	7814	1658
Child (age 13 or less)	0	0	1	0	0	0	51	14
<b>Exposure category</b>								
Heterosexual	24	5	29	9	33	14	2826	925
Homosexual	69	9	103	14	98	13	2873	453
Bisexual	10	3	16	3	11	2	348	77
Injecting drug use	2	0	4	1	5	0	347	63
Blood / blood product infusion	0	0	0	0	0	0	84	24
Perinatal	0	0	1	0	0	0	29	9
Undetermined	42	0	31	2	26	2	1358	121

**(to be cont'd)**

**Table 1.1 (Cont'd)**

	This quarter (Jan - Mar 2016)		Last quarter (Oct - Dec 2015)		Same quarter last year (Jan - Mar 2015)		Cumulative (1984 - Mar 2016)	
	HIV	AIDS	HIV	AIDS	HIV	AIDS	HIV	AIDS
<b>Source of referral</b>								
Public hospitals / clinics / laboratories	66	16	63	24	57	26	3188	1270
Private hospitals / clinics / laboratories	16	1	34	4	22	3	1635	220
Social Hygiene Clinics	24	0	34	1	30	0	1096	59
DH AIDS Unit	11	0	20	0	25	0	1016	97
AIDS service organisations (NGOs)	26	0	25	0	33	2	661	11
Hong Kong Red Cross Blood Transfusion Service	2	0	5	0	3	0	147	9
Drug rehabilitation services	2	0	3	0	3	0	122	6
<b>Total</b>	<b>147</b>	<b>17</b>	<b>184</b>	<b>29</b>	<b>173</b>	<b>31</b>	<b>7865</b>	<b>1672</b>

Chart 1.1 Number of HIV/AIDS reported



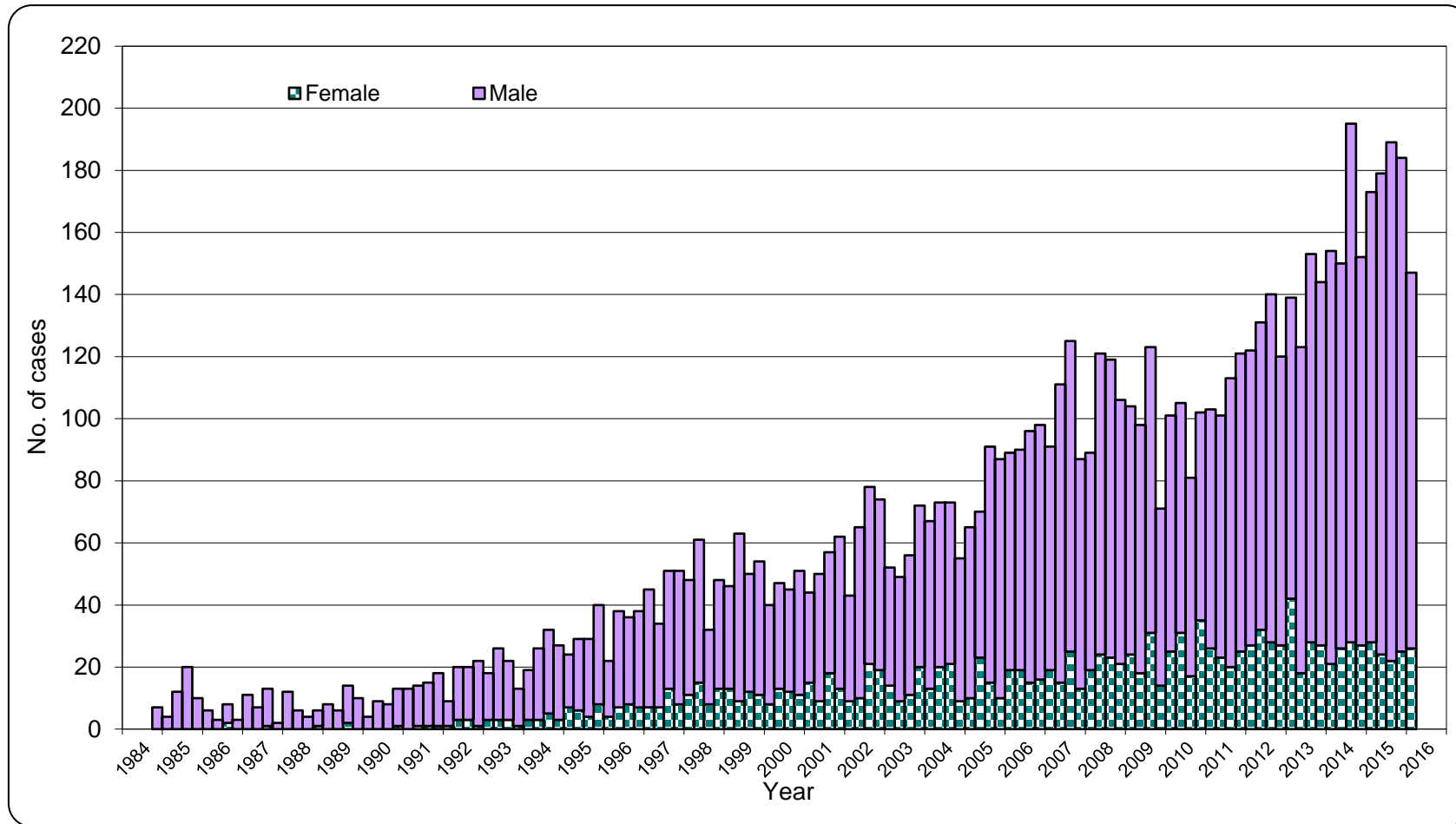
## 2. Gender distribution of reported HIV/AIDS

Table 2.1 Gender distribution of reported HIV

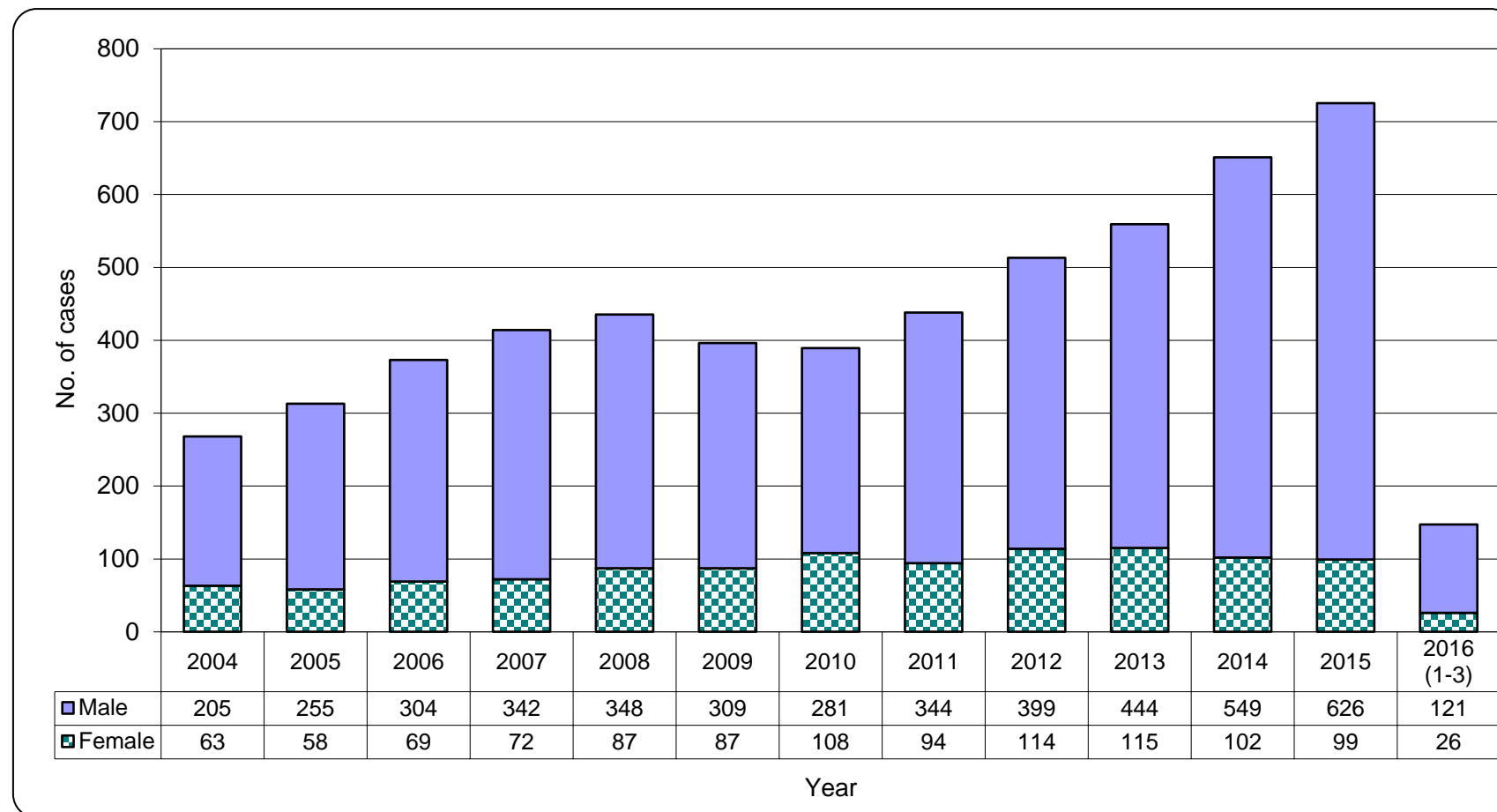
	This quarter (Jan - Mar 2016)	Last quarter (Oct - Dec 2015)	Same quarter last year (Jan - Mar 2015)	Cumulative (1984 - Mar 2016)
Male	121	159	145	6,339
Female	26	25	28	1,526
<b>Total</b>	<b>147</b>	<b>184</b>	<b>173</b>	<b>7,865</b>



Chart 2.1 Gender distribution of reported HIV by quarter



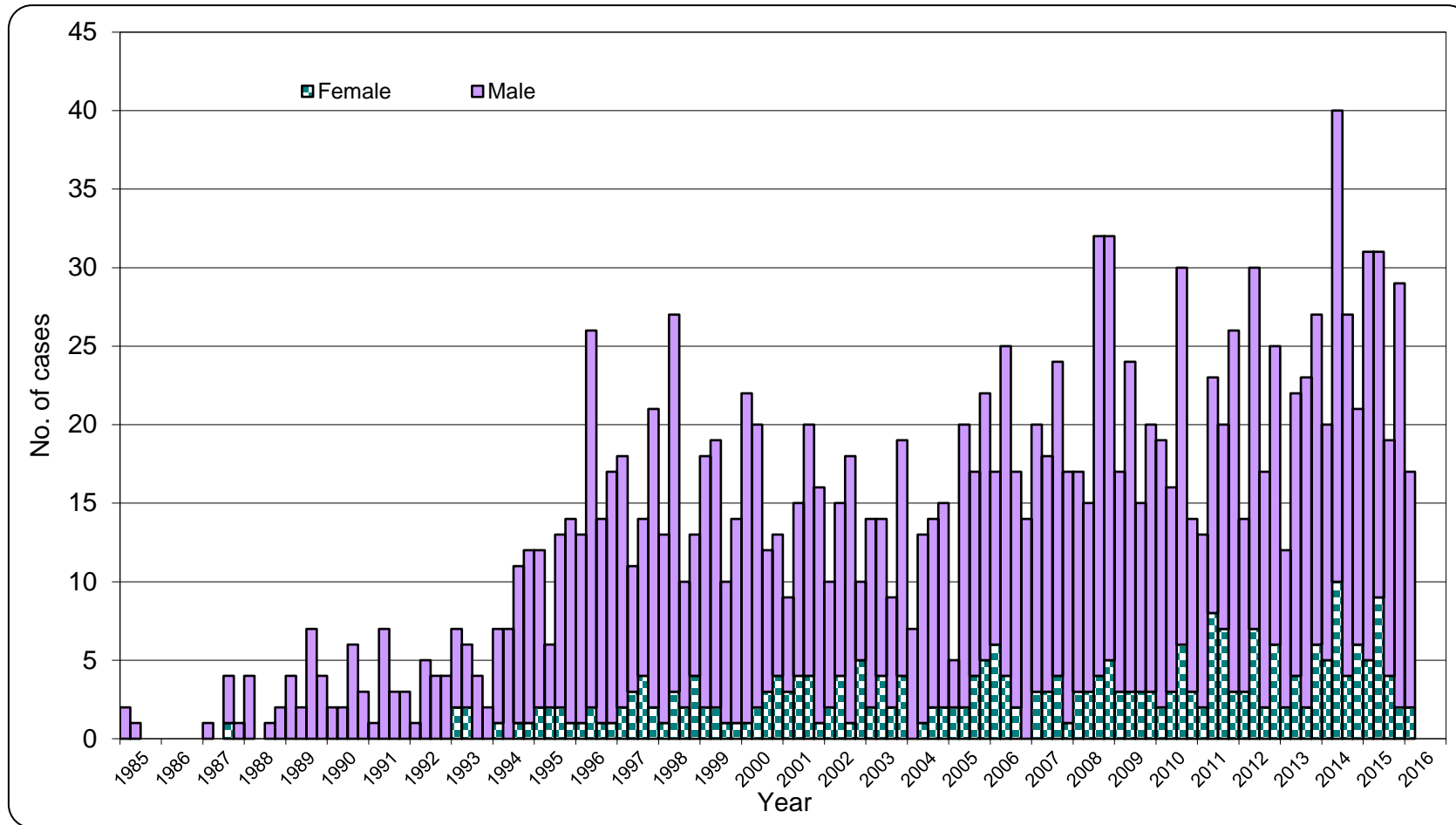
**Chart 2.2 Gender distribution of reported HIV by year**



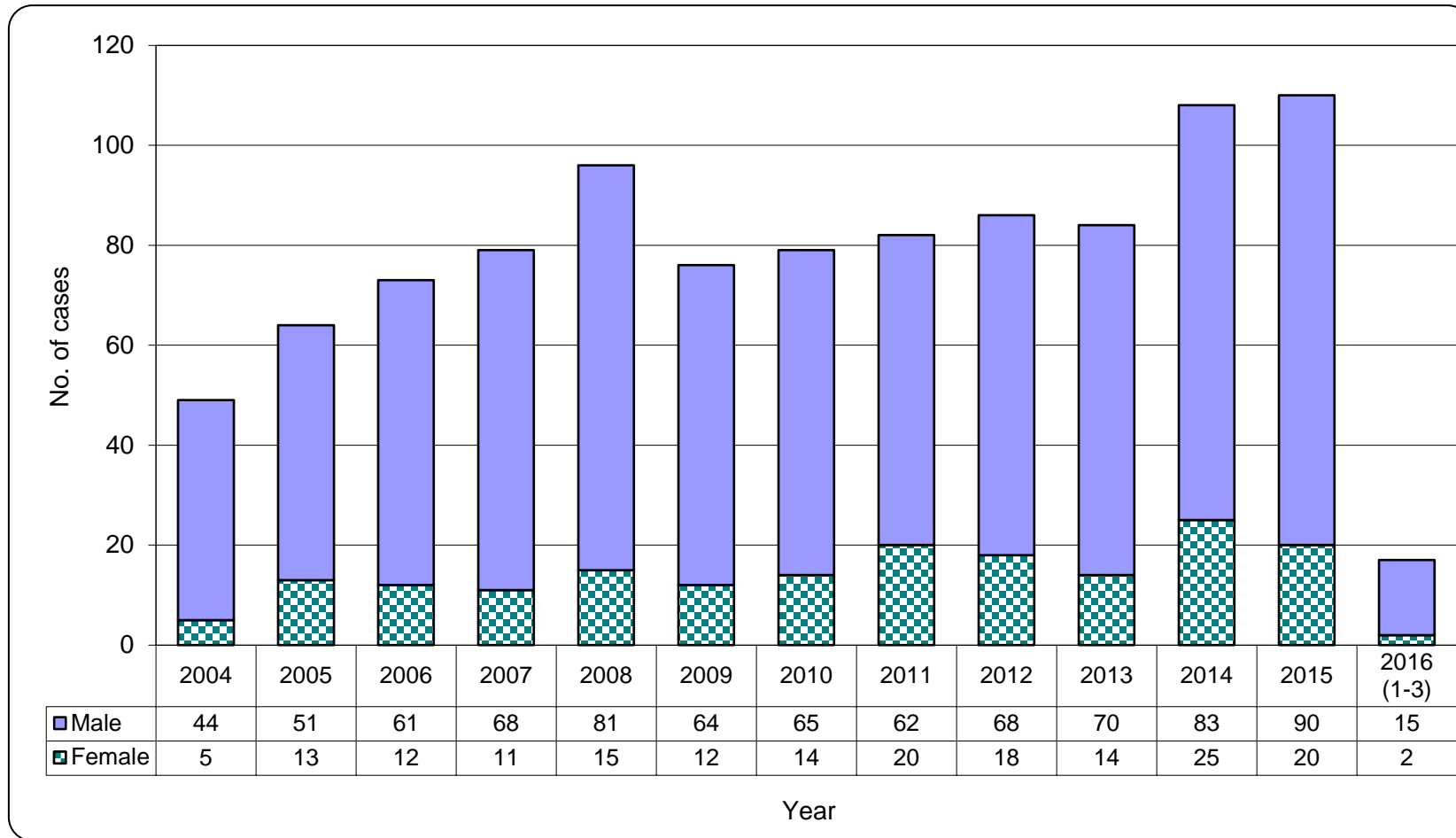
**Table 2.2 Gender distribution of reported AIDS**

	This quarter (Jan - Mar 2016)	Last quarter (Oct - Dec 2015)	Same quarter last year (Jan - Mar 2015)	Cumulative (1984 - Mar 2016)
Male	15	27	26	1,398
Female	2	2	5	274
<b>Total</b>	<b>17</b>	<b>29</b>	<b>31</b>	<b>1,672</b>

Chart 2.3 Gender distribution of reported AIDS by quarter



**Chart 2.4 Gender distribution of reported AIDS by year**

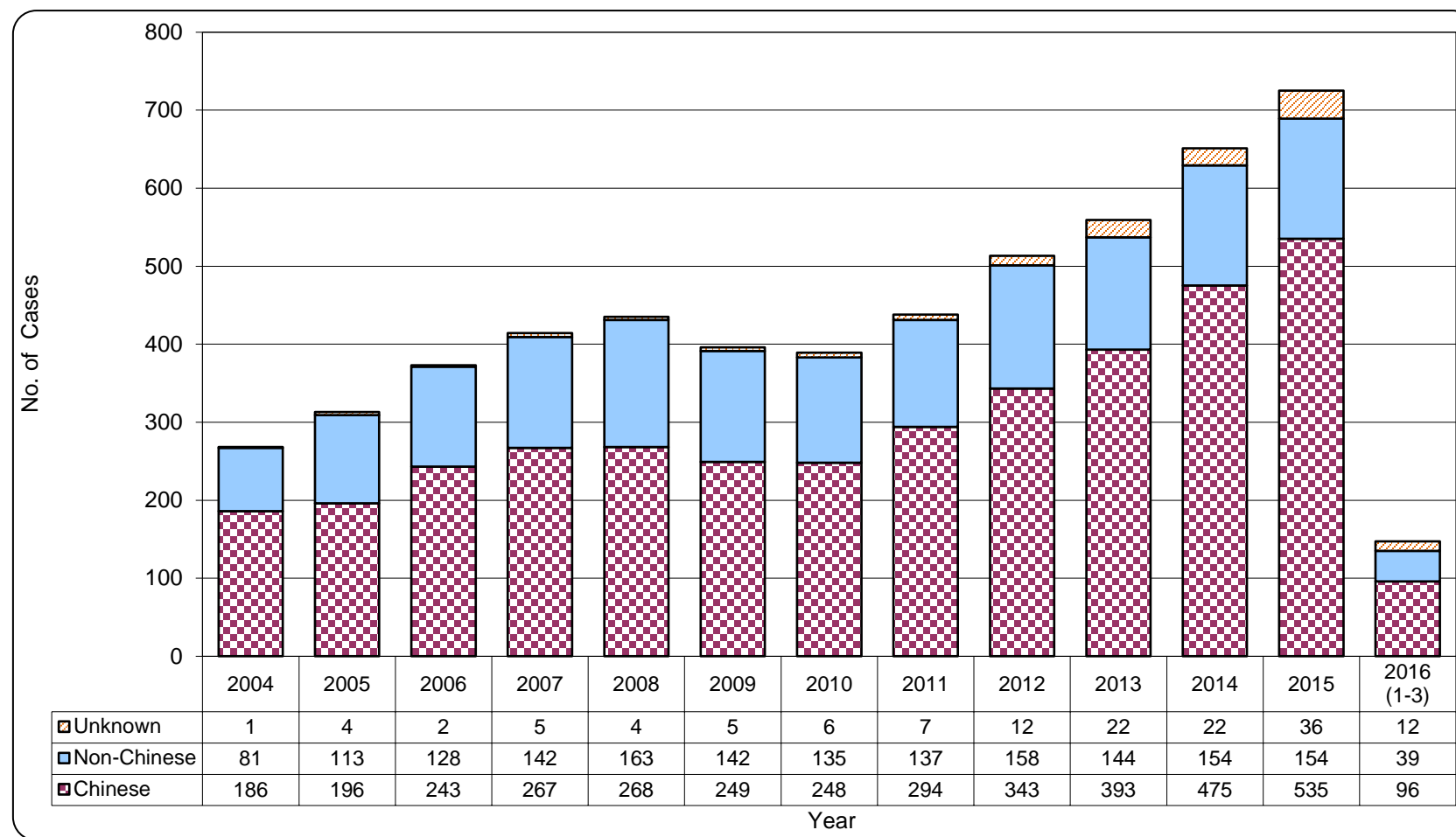


### 3. Ethnicity of reported HIV/AIDS

**Table 3.1 Distribution of ethnicity of reported HIV**

	This quarter (Jan - Mar 2016)	Last quarter (Oct - Dec 2015)	Same quarter last year (Jan - Mar 2015)	Cumulative (1984 - Mar 2016)
<b>Chinese</b>	96	129	132	5,345
<b>Non-Chinese</b>	39	43	29	2,373
<i>Asian</i>	14	21	15	1,180
<i>White</i>	6	8	5	516
<i>Black</i>	8	5	3	189
<i>Others</i>	11	9	6	488
<b>Unknown</b>	12	12	12	147
<b>Total</b>	<b>147</b>	<b>184</b>	<b>173</b>	<b>7,865</b>

**Chart 3.1 Distribution of ethnicity of reported HIV**

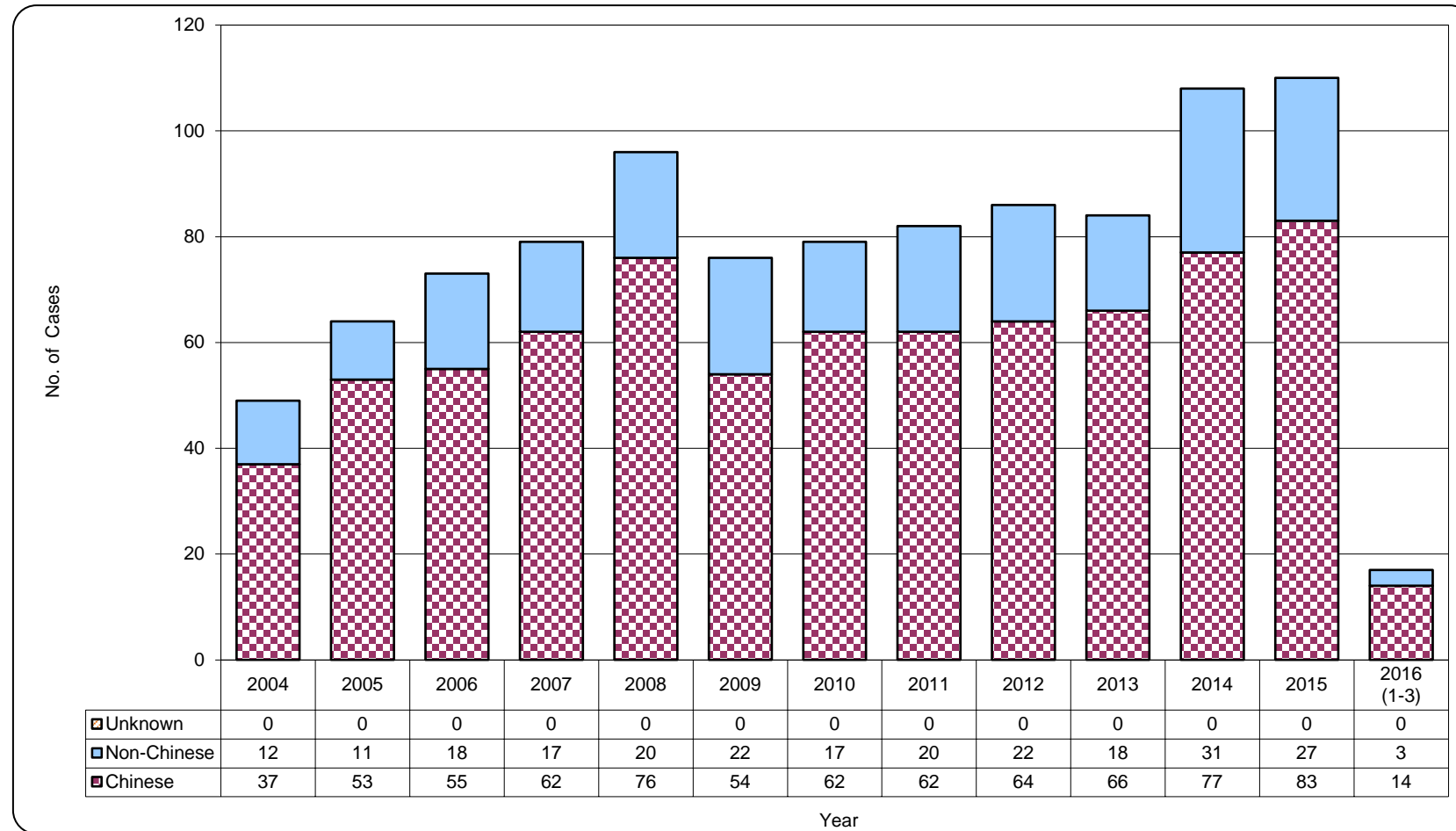


**Table 3.2 Distribution of ethnicity of reported AIDS**

	This quarter (Jan - Mar 2016)	Last quarter (Oct - Dec 2015)	Same quarter last year (Jan - Mar 2015)	Cumulative (1984 - Mar 2016)
<b>Chinese</b>	14	23	21	1,284
<b>Non-Chinese</b>	3	6	10	388
<i>Asian</i>	0	4	6	255
<i>White</i>	1	1	2	94
<i>Black</i>	2	1	1	35
<i>Others</i>	0	0	1	4
<b>Unknown</b>	0	0	0	0
<b>Total</b>	<b>17</b>	<b>29</b>	<b>31</b>	<b>1,672</b>



**Chart 3.2 Distribution of ethnicity of reported AIDS**

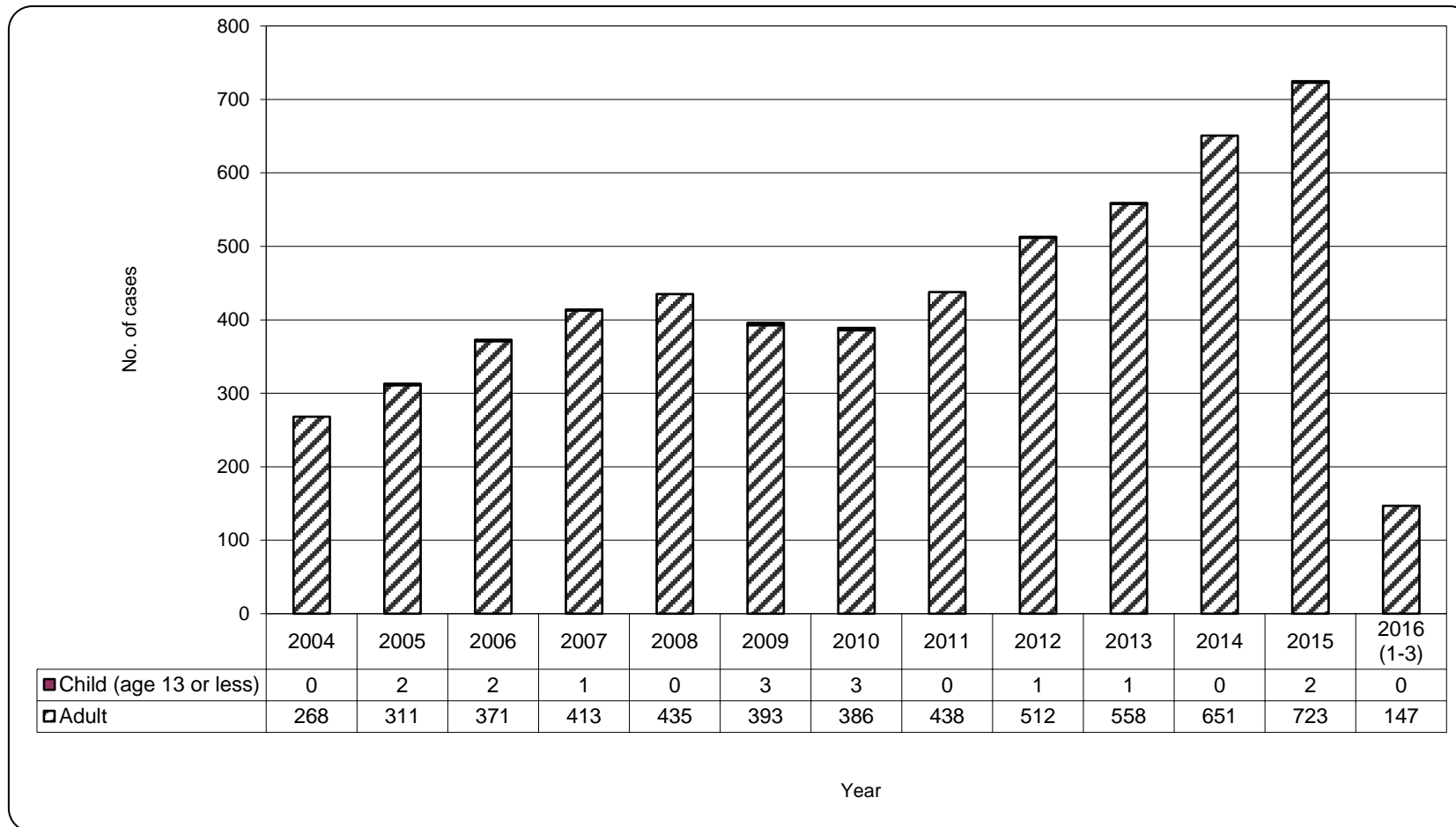


#### 4. Age distribution of reported HIV/AIDS

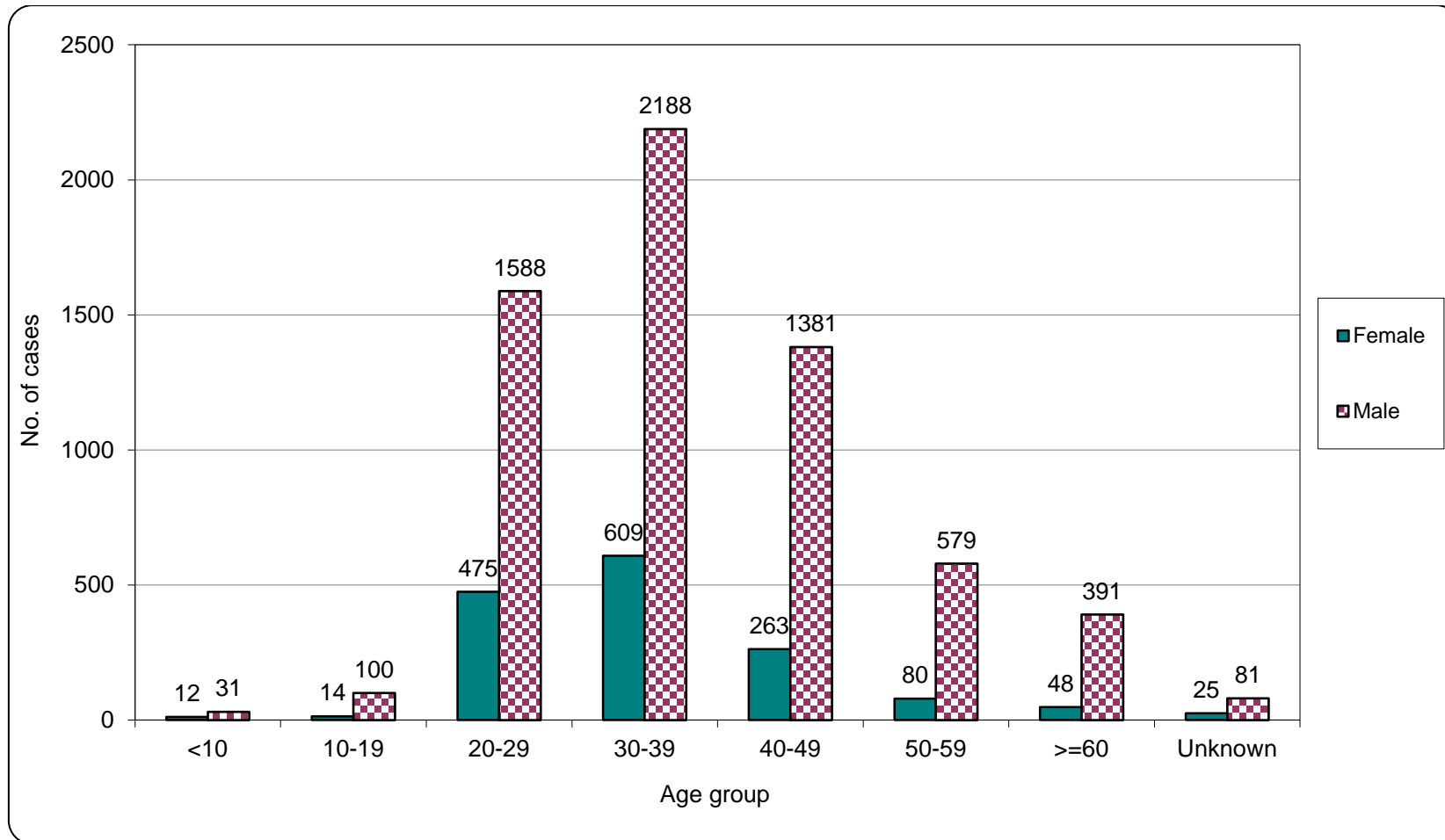
**Table 4.1 Age distribution of reported HIV**

	This quarter (Jan - Mar 2016)	Last quarter (Oct - Dec 2015)	Same quarter last year (Jan - Mar 2015)	Cumulative (1984 - Mar 2016)
Adult	147	183	173	7,814
Child (age 13 or less)	0	1	0	51
<b>Total</b>	<b>147</b>	<b>184</b>	<b>173</b>	<b>7,865</b>

**Chart 4.1 Age distribution of reported HIV**



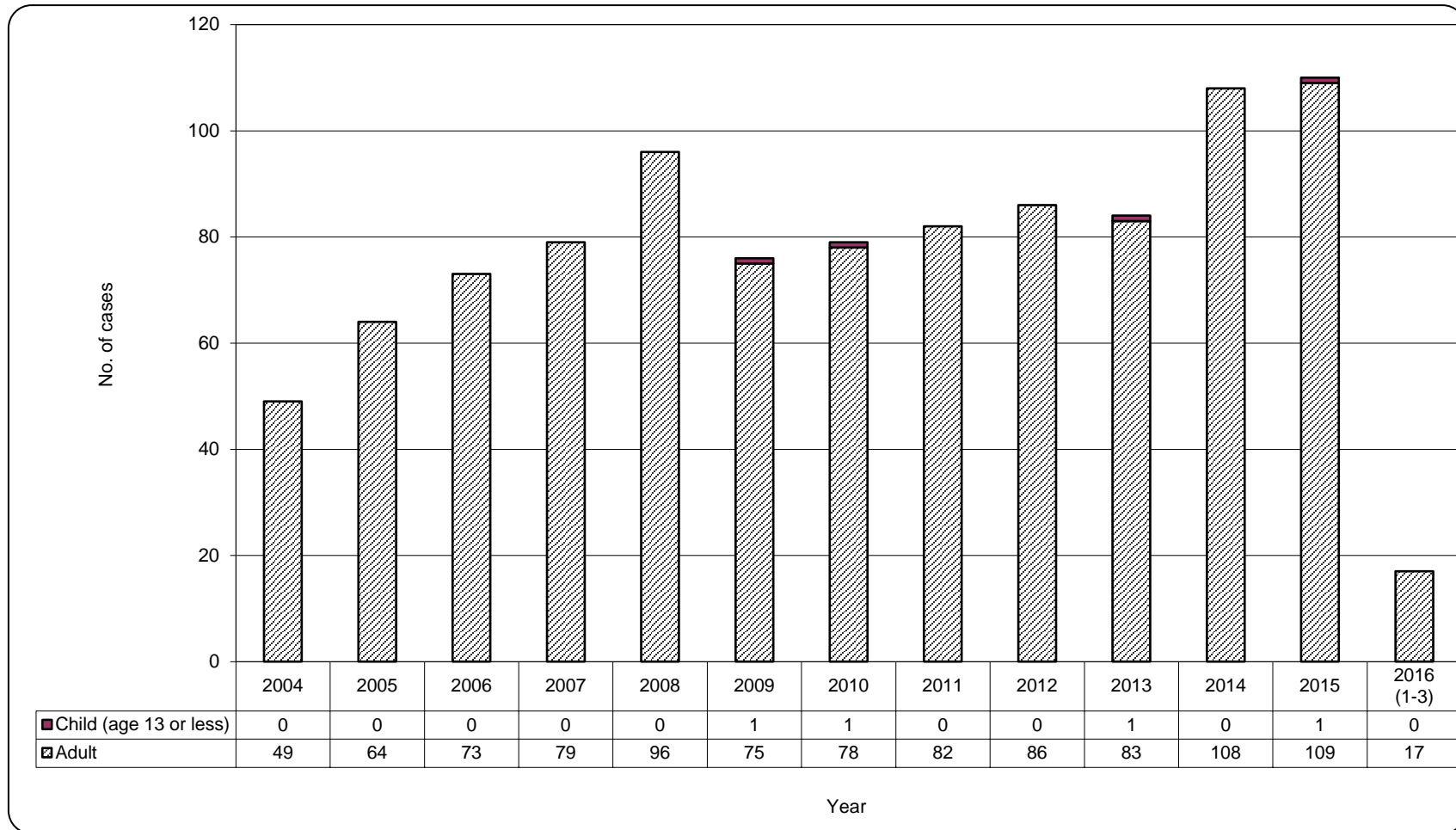
**Chart 4.2 Age group & gender of total reported HIV**



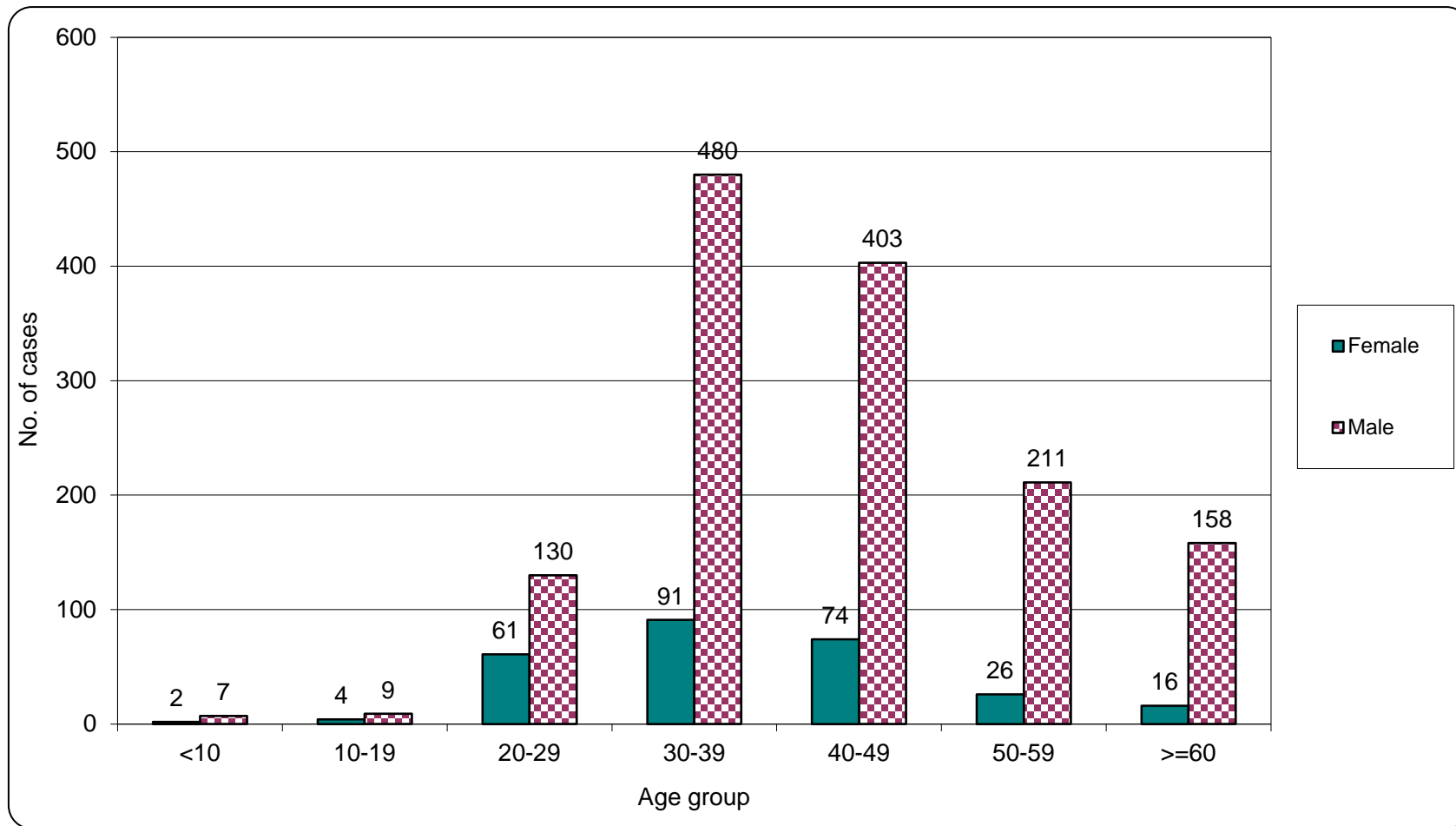
**Table 4.2 Age distribution of reported AIDS**

	This quarter (Jan - Mar 2016)	Last quarter (Oct - Dec 2015)	Same quarter last year (Jan - Mar 2015)	Cumulative (1984 - Mar 2016)
Adult	17	29	31	1,658
Child (age 13 or less)	0	0	0	14
<b>Total</b>	<b>17</b>	<b>29</b>	<b>31</b>	<b>1,672</b>

**Chart 4.3 Age distribution of reported AIDS**



**Chart 4.4 Age group & gender of total reported AIDS**



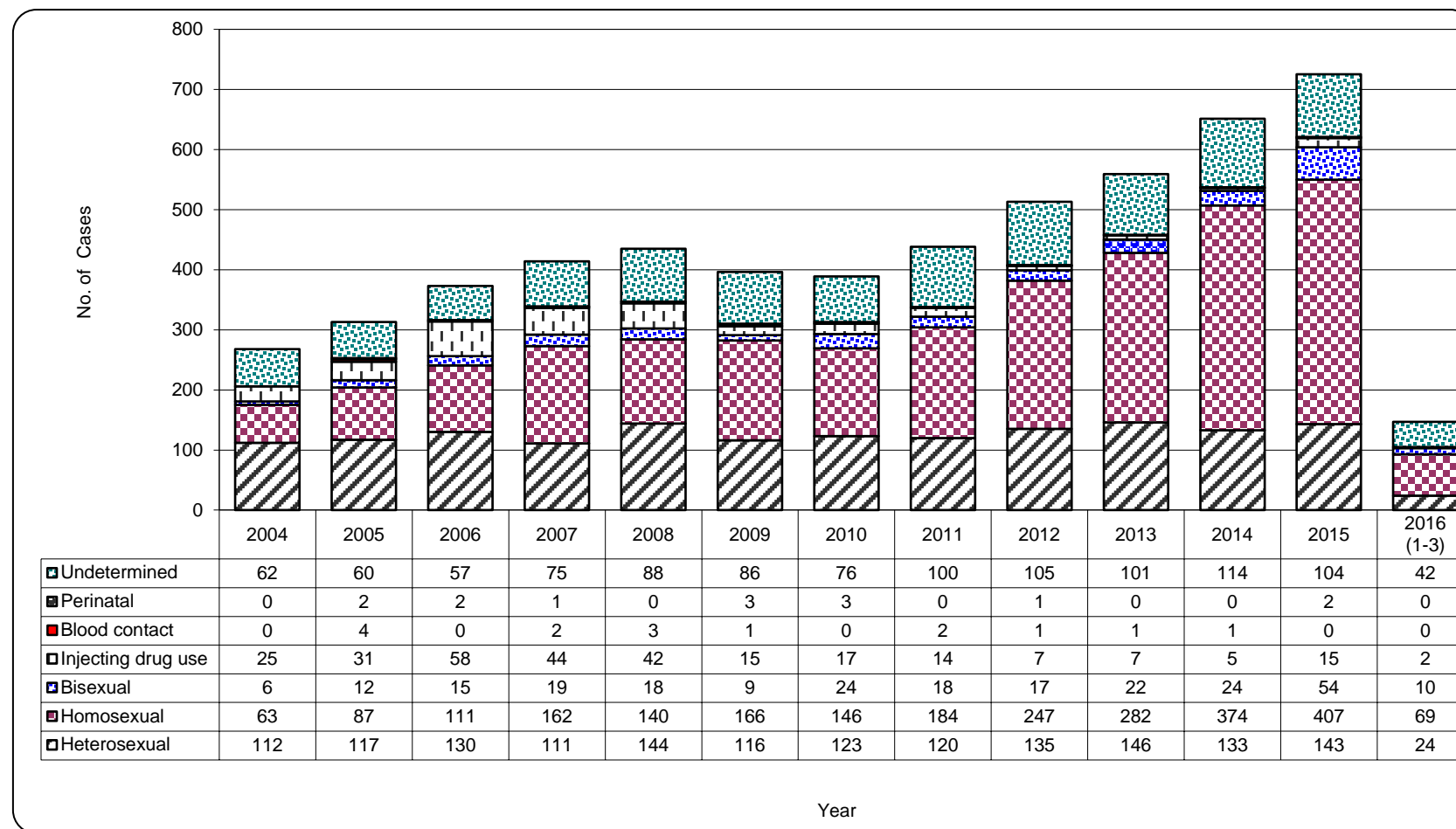
## 5. Exposure categories of reported HIV/AIDS

**Table 5.1 Exposure categories of reported HIV**

	This quarter (Jan - Mar 2016)	Last quarter (Oct - Dec 2015)	Same quarter last year (Jan - Mar 2015)	Cumulative (1984 - Mar 2016)
Heterosexual	24	29	33	2826
Homosexual	69	103	98	2873
Bisexual	10	16	11	348
Injecting drug use	2	4	5	347
Blood / blood product infusion	0	0	0	84
Perinatal	0	1	0	29
Undetermined	42	31	26	1358
<b>Total</b>	<b>147</b>	<b>184</b>	<b>173</b>	<b>7,865</b>



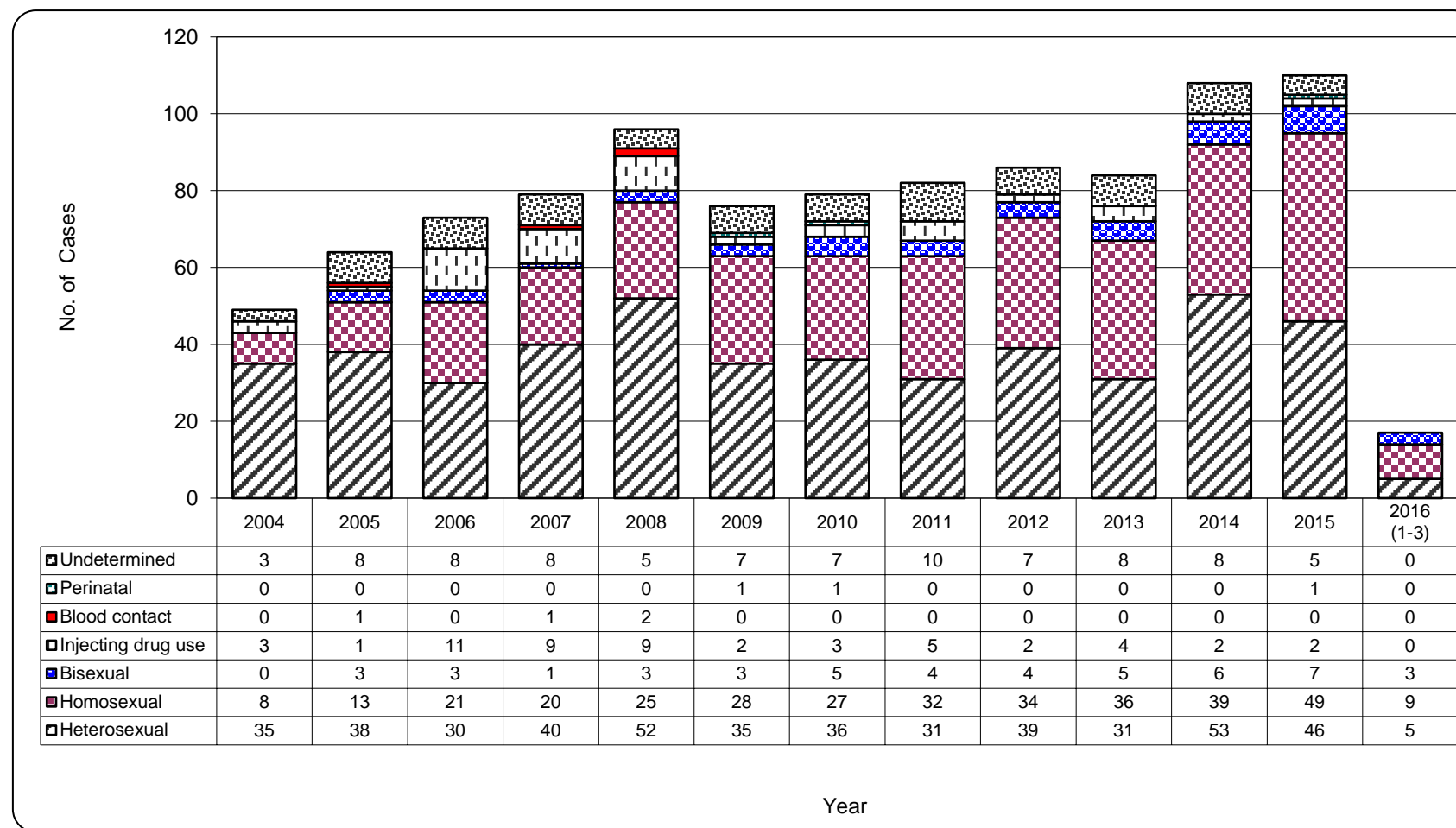
**Chart 5.1 Exposure categories of reported HIV**



**Table 5.2 Exposure categories of reported AIDS**

	This quarter (Jan - Mar 2016)	Last quarter (Oct - Dec 2015)	Same quarter last year (Jan - Mar 2015)	Cumulative (1984 - Mar 2016)
Heterosexual	5	9	14	925
Homosexual	9	14	13	453
Bisexual	3	3	2	77
Injecting drug use	0	1	0	63
Blood / blood product infusion	0	0	0	24
Perinatal	0	0	0	9
Undetermined	0	2	2	121
<b>Total</b>	<b>17</b>	<b>29</b>	<b>31</b>	<b>1,672</b>

Chart 5.2 Exposure categories of reported AIDS



## 6. Ratio (heterosexual : homosexual / bisexual) of sexually acquired HIV infection in men

**Table 6.1 Ratio of sexually acquired infection in men with reported HIV/AIDS (heterosexual : homo / bisexual) by quarter**

	This quarter (Jan - Mar 2016)	Last quarter (Oct - Dec 2015)	Same quarter last year (Jan - Mar 2015)	Cumulative (1984 - Mar 2016)
HIV	0.2 : 1	0.1 : 1	0.1 : 1	<b>0.6 : 1</b>
AIDS	0.3 : 1	0.4 : 1	0.7 : 1	<b>1.3 : 1</b>

**Table 6.2 Ratio of sexually acquired infection in men with reported HIV/AIDS (heterosexual : homo / bisexual) by year**

	2005	2006	2007	2008	2009	2010	2011	2012	2013	2014	2015	2016 (1-3)	1984 – Mar 2016
HIV	0.8 : 1	0.7 : 1	0.4 : 1	0.6 : 1	0.4 : 1	0.4 : 1	0.3 : 1	0.3 : 1	0.2 : 1	0.2 : 1	0.2 : 1	0.2 : 1	<b>0.6 : 1</b>
AIDS	1.8 : 1	0.8 : 1	1.5 : 1	1.4 : 1	0.8 : 1	0.8 : 1	0.4 : 1	0.6 : 1	0.4 : 1	0.7 : 1	0.5 : 1	0.3 : 1	<b>1.3 : 1</b>

## 7. Injecting drug users in reported HIV/AIDS

**Table 7.1 Injecting drug users in reported HIV/AIDS**

	This quarter (Jan - Mar 2016)	Last quarter (Oct - Dec 2015)	Same quarter last year (Jan - Mar 2015)	Cumulative (1984 - Mar 2016)
HIV (% of reported HIV)	2 1.4%	4 2.2%	5 2.9%	<b>347</b> <b>4.4%</b>
AIDS (% of reported AIDS)	0 0.0%	1 3.4%	0 0.0%	<b>63</b> <b>3.8%</b>

**Table 7.2 Number of injecting drug user in reported HIV/AIDS by year**

	2005	2006	2007	2008	2009	2010	2011	2012	2013	2014	2015	2016 (1-3)	1984 – Mar 2016
HIV (% of reported HIV)	31 (9.9%)	58 (15.5%)	44 (10.6%)	42 (9.7%)	15 (3.8%)	17 (4.4%)	14 (3.2%)	7 (1.4%)	7 (1.3%)	5 (0.8%)	15 (2.1%)	2 (1.4%)	<b>347</b> <b>(4.4%)</b>
AIDS (% of reported AIDS)	1 (1.6%)	11 (15.1%)	9 (11.4%)	9 (9.4%)	2 (2.6%)	3 (3.8%)	5 (6.1%)	2 (2.3%)	4 (4.8%)	2 (1.9%)	2 (1.8%)	0 (0.0%)	<b>63</b> <b>(3.8%)</b>

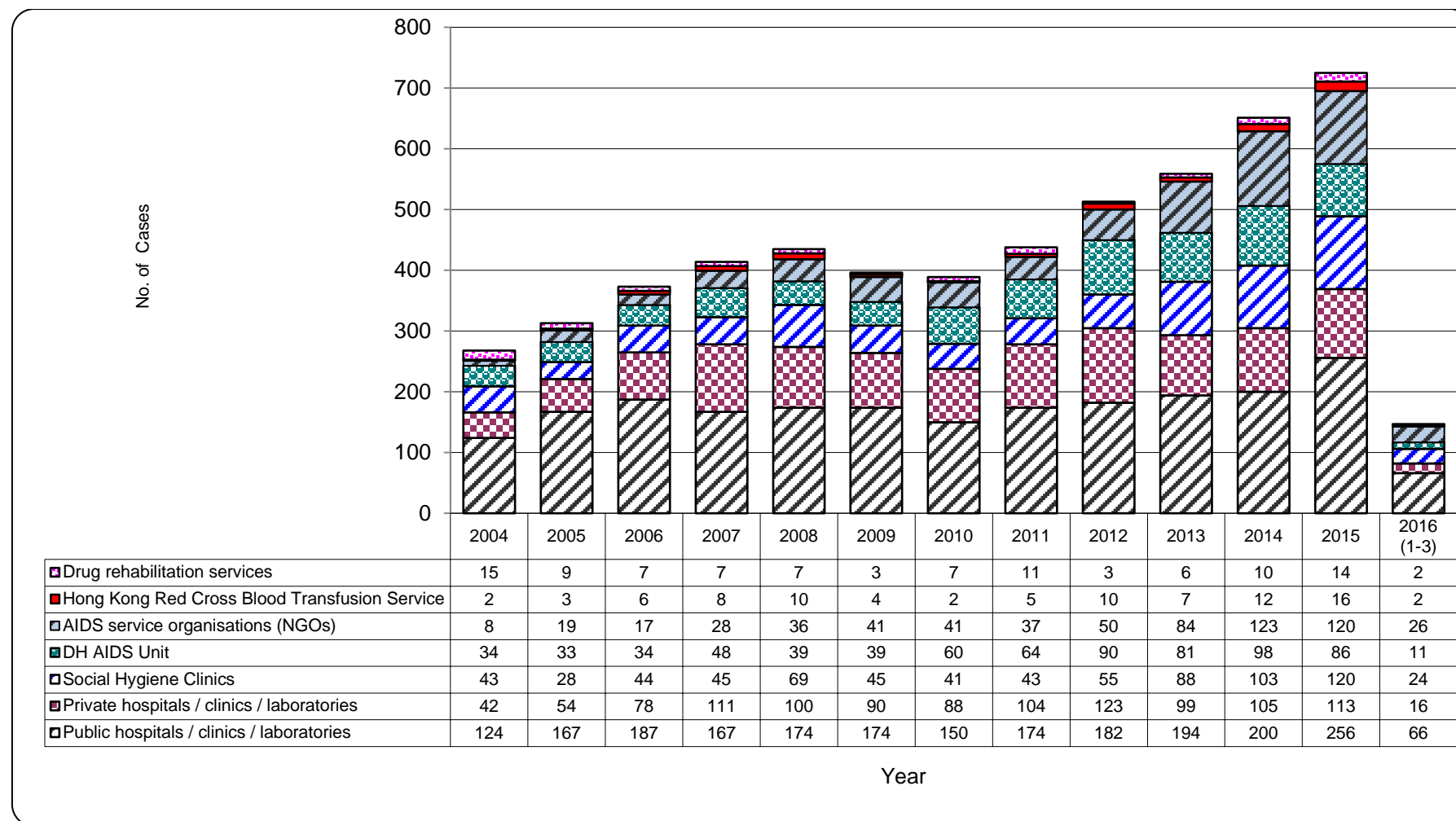
## 8. Source of referral of reported HIV/AIDS

**Table 8.1 Source of referral of reported HIV**

	This quarter (Jan - Mar 2016)	Last quarter (Oct - Dec 2015)	Same quarter last year (Jan - Mar 2015)	Cumulative (1984 - Mar 2016)
Public hospitals / clinics / laboratories	66	63	57	3188
Private hospitals / clinics / laboratories	16	34	22	1635
Social Hygiene Clinics	24	34	30	1096
DH AIDS unit	11	20	25	1016
AIDS service organisations (NGOs)	26	25	33	661
Hong Kong Red Cross Blood Transfusion Service	2	5	3	147
Drug rehabilitation services	2	3	3	122
<b>Total</b>	<b>147</b>	<b>184</b>	<b>173</b>	<b>7,865</b>



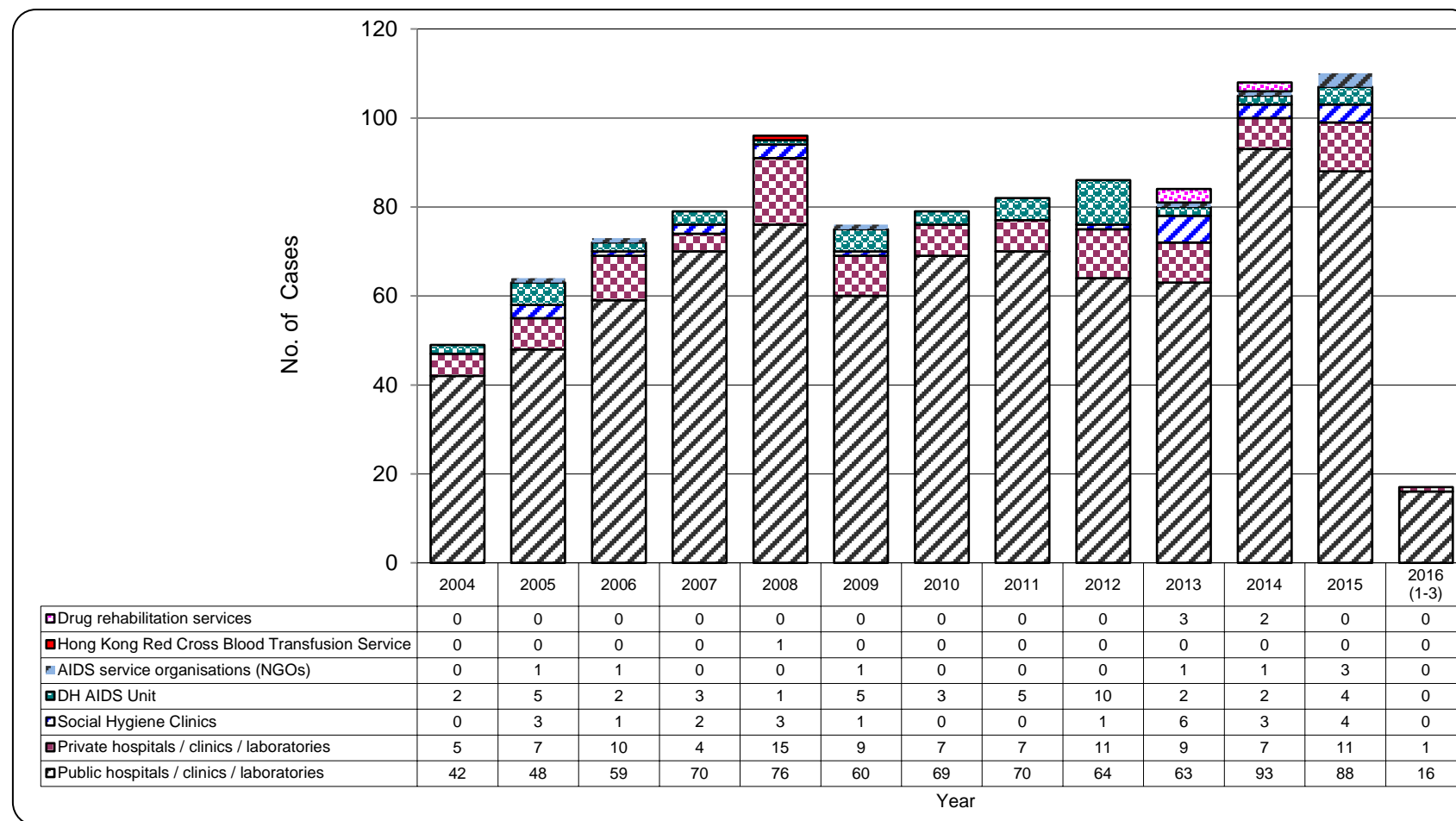
Chart 8.1 Source of referral of reported HIV



**Table 8.2 Source of referral of reported AIDS**

	This quarter (Jan - Mar 2016)	Last quarter (Oct - Dec 2015)	Same quarter last year (Jan - Mar 2015)	Cumulative (1984 - Mar 2016)
Public hospitals / clinics / laboratories	16	24	26	1270
Private hospitals / clinics / laboratories	1	4	3	220
Social Hygiene Clinics	0	1	0	59
DH AIDS unit	0	0	0	97
AIDS service organisations (NGOs)	0	0	2	11
Hong Kong Red Cross Blood Transfusion Service	0	0	0	9
Drug rehabilitation services	0	0	0	6
<b>Total</b>	<b>17</b>	<b>29</b>	<b>31</b>	<b>1,672</b>

Chart 8.2 Source of referral of Reported AIDS

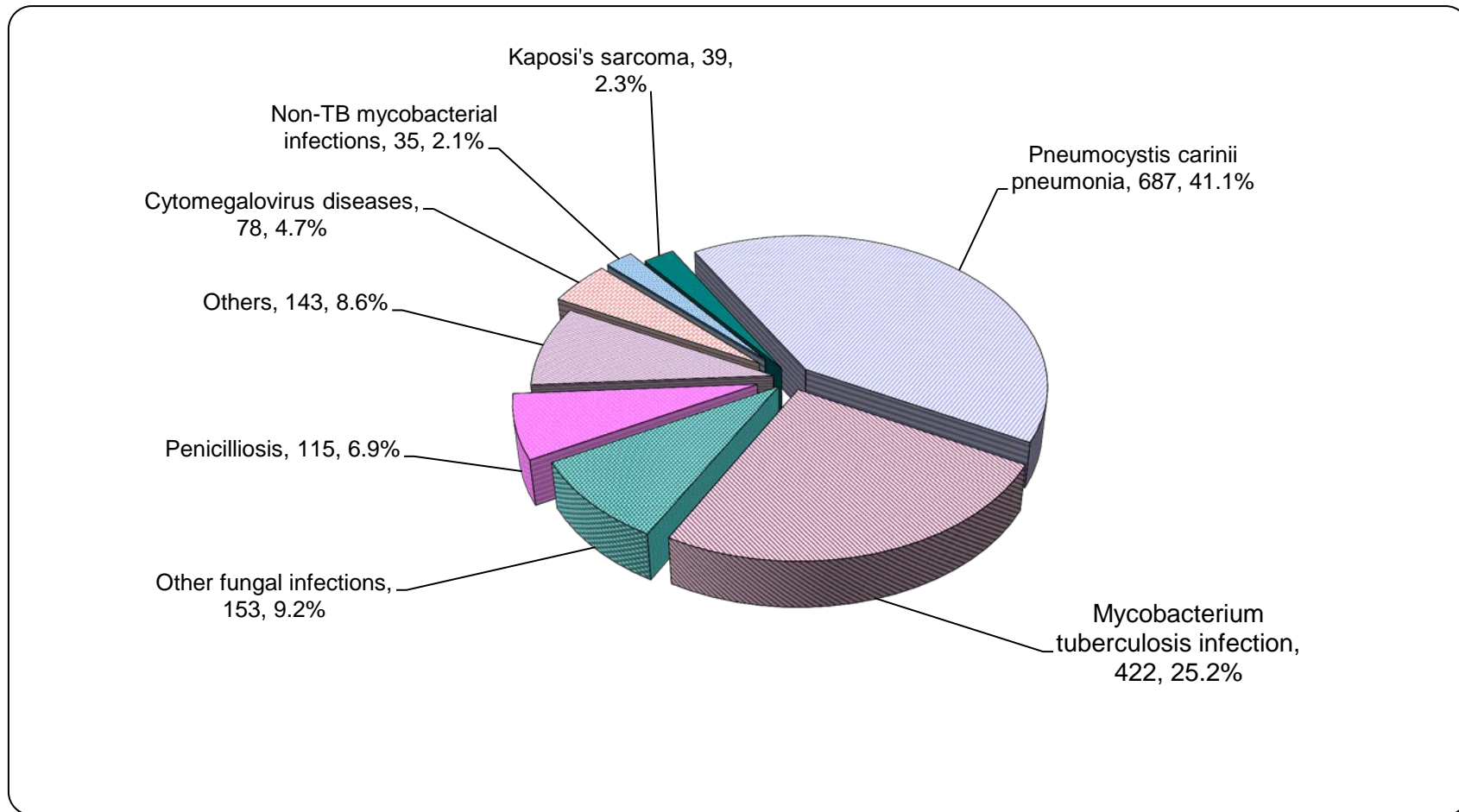


## 9. Distribution of AIDS defining illnesses

**Table 9.1 Distribution of AIDS defining illness of reported AIDS**

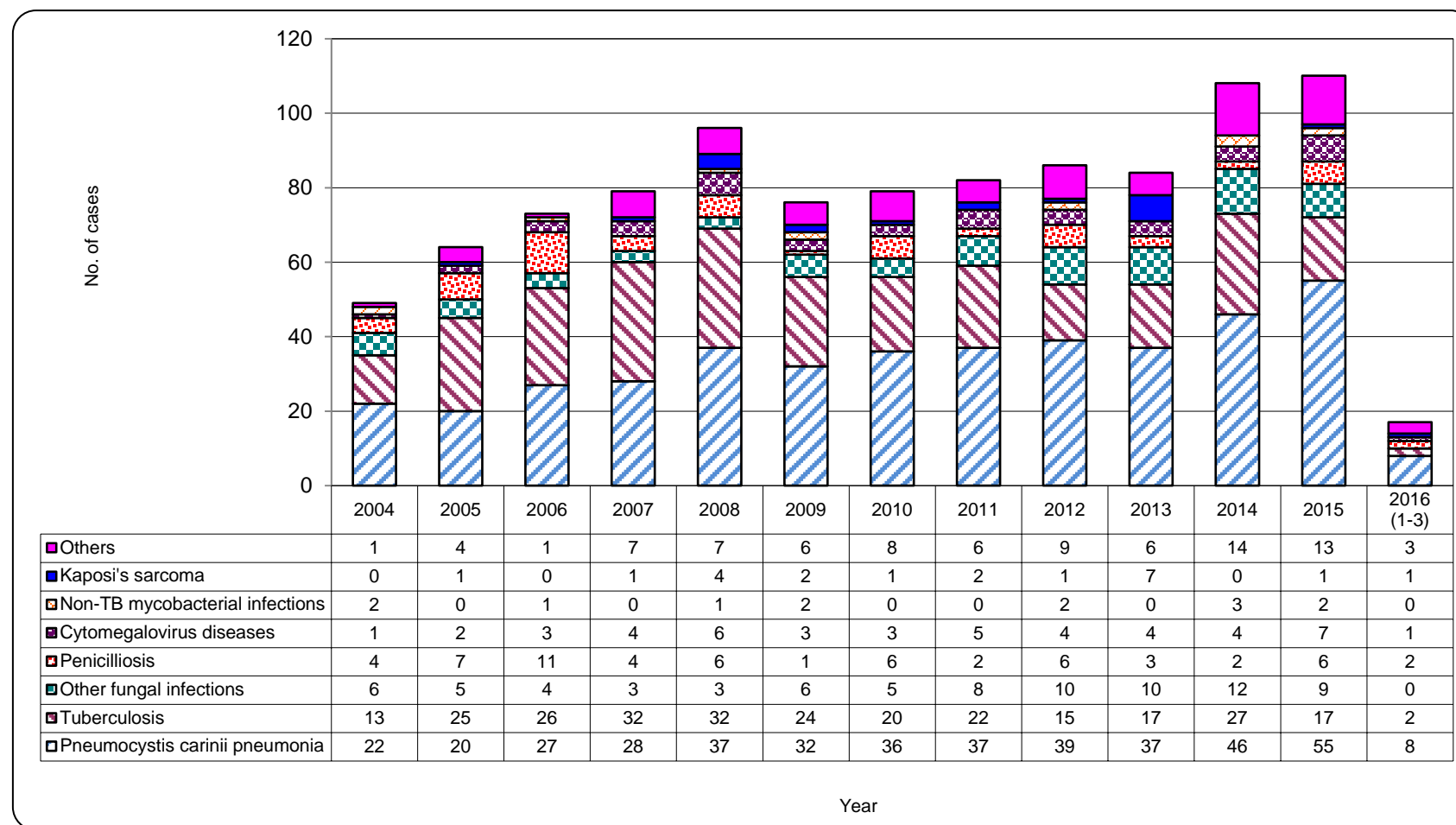
	This quarter (Jan - Mar 2016)	Last quarter (Oct - Dec 2015)	Same quarter last year (Jan - Mar 2015)	Cumulative (1984 - Mar 2016)
<i>Pneumocystis carinii pneumonia</i>	8	11	19	687
<i>Mycobacterium tuberculosis</i>	2	5	3	422
Other fungal infections	0	4	1	153
Penicilliosis	2	3	1	115
Cytomegalovirus diseases	1	0	4	78
Non-TB mycobacterial infections	0	0	0	35
Kaposi's sarcoma	1	0	0	39
Others	3	6	3	143
<b>Total</b>	<b>17</b>	<b>29</b>	<b>31</b>	<b>1,672</b>

**Chart 9.1 AIDS defining illness of total reported AIDS**



Format: [ ADI; Number; % ]

Chart 9.2 AIDS defining illness of reported AIDS by year



## 10. Reported sexually transmitted infections (STIs) diagnosed in Social Hygiene Service

Table 10.1 Summary table on the reported STIs diagnosed in Social Hygiene Service

	This quarter (Jan - Mar 2016)	Last quarter (Oct - Dec 2015)	Same quarter last year (Jan - Mar 2015)	In year 2015
<b>Syphilis</b>				
<i>Primary</i>	12	14	15	53
<i>Secondary</i>	24	52	23	179
<i>Early latent</i>	33	44	26	130
<i>Late latent</i>	156	180	191	738
<i>Late (cardiovascular / neuro /ocular)</i>	0	1	0	4
<i>Congenital (early)</i>	0	0	0	0
<i>Congenital (late)</i>	3	1	1	3
<b>Syphilis total</b>	<b>228</b>	<b>292</b>	<b>256</b>	<b>1,107</b>

(to be cont'd)

**Table 10.1 (Cont'd)**

	This quarter (Jan - Mar 2016)	Last quarter (Oct - Dec 2015)	Same quarter last year (Jan - Mar 2015)	In year 2015
Gonorrhoea	295	361	324	1,357
Non-gonococcal urethritis (Male)	781	820	948	3,544
Non-specific genital infection (Female)	449	559	523	2,216
Genital wart	413	492	440	1,953
<i>Herpes genitalis</i>	179	178	183	772
Pediculosis pubis	9	4	7	26
Trichomonas	65	91	85	349
Genital ulcer	4	3	0	6
Chancroid / <i>Lymphogranuloma venereum</i>	0	0	0	0
Others	265	429	256	1,451
<b>Total</b>	<b>2,688</b>	<b>3,229</b>	<b>3,022</b>	<b>12,781</b>



## 11. Gender distribution of reported STIs

**Table 11.1 Gender distribution of selected STI reported by Social Hygiene Service**

	This quarter (Jan - Mar 2016)	Last quarter (Oct - Dec 2015)	Same quarter last year (Jan - Mar 2015)	In year 2015
<b>Primary Syphilis</b>				
Male (M)	12	14	15	52
Female (F)	0	0	0	1
<b>M:F</b>	<b>N.A.</b>	<b>N.A.</b>	<b>N.A.</b>	<b>52.0 : 1</b>
<b>Gonorrhoea</b>				
Male (M)	252	309	283	1,191
Female (F)	43	52	41	166
<b>M:F</b>	<b>5.9 : 1</b>	<b>5.9 : 1</b>	<b>6.9 : 1</b>	<b>7.2 : 1</b>
<b>NGU / NSGI *</b>				
Male (M)	781	820	948	3,544
Female (F)	449	559	523	2,216
<b>M:F</b>	<b>1.7 : 1</b>	<b>1.5 : 1</b>	<b>1.8 : 1</b>	<b>1.6 : 1</b>

(to be cont'd)

Table 11.1 (Cont'd)

	This quarter (Jan - Mar 2016)	Last quarter (Oct - Dec 2015)	Same quarter last year (Jan - Mar 2015)	In year 2015
<b>Genital wart</b>				
Male (M)	261	360	314	1,405
Female (F)	152	132	126	548
<b>M:F</b>	<b>1.7 : 1</b>	<b>2.7 : 1</b>	<b>2.5 : 1</b>	<b>2.6 : 1</b>
<b><i>Herpes genitails</i></b>				
Male (M)	101	110	124	515
Female (F)	78	68	59	257
<b>M:F</b>	<b>1.3 : 1</b>	<b>1.6 : 1</b>	<b>2.1 : 1</b>	<b>2.0 : 1</b>

\* NGU = Non-gonococcal urethritis

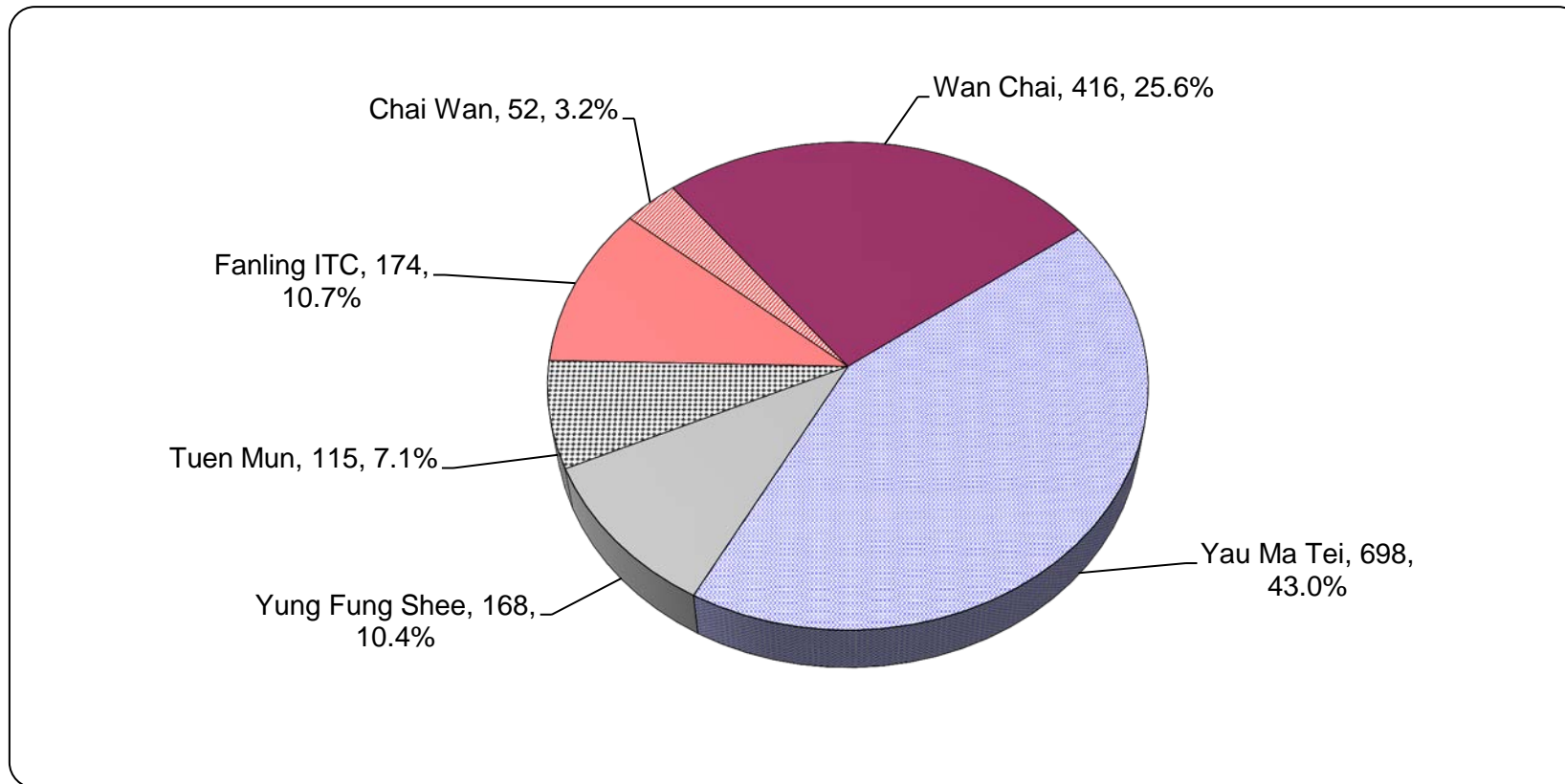
NSGI = Non-specific genital infection

**Table 11.2 Gender distribution of reported STI by clinic**

	This quarter (Jan - Mar 2016)		Last quarter (Oct - Dec 2015)		Same quarter last year (Jan - Mar 2015)		In year 2015	
	Male	Female	Male	Female	Male	Female	Male	Female
Chai Wan	52	25	38	31	43	32	178	158
Wan Chai	416	260	519	287	558	273	2,094	1,117
Yau Ma Tei	698	500	888	534	739	480	3,465	2,134
Yung Fung Shee	168	82	203	133	237	142	905	516
Tuen Mun	115	104	137	149	170	96	590	470
Fanling ITC	174	94	214	96	155	97	745	409
<b>Total</b>	<b>1,623</b>	<b>1,065</b>	<b>1,999</b>	<b>1,230</b>	<b>1,902</b>	<b>1,120</b>	<b>7,977</b>	<b>4,804</b>

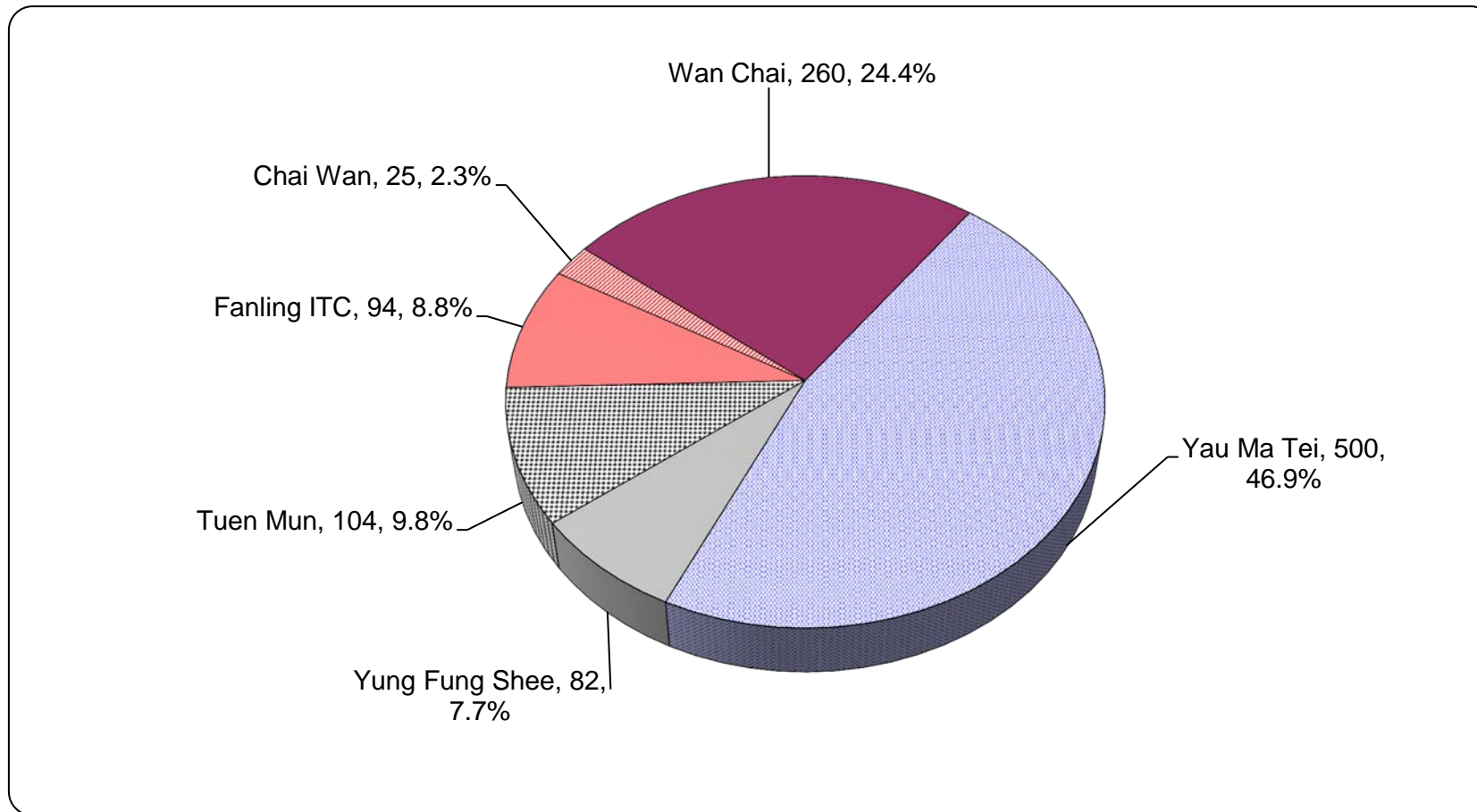
## 12. Clinic distribution

Chart 12.1 Number of newly report STI in Q1 2016 by clinic (male clients)



Format : [ Clinic ; Number ; % ]

**Chart 12.2 Number of newly report STI in Q1 2016 by clinic (female clients)**



Format : [ Clinic ; Number ; % ]