



The Hong Kong STD/AIDS update is a composite report on HIV/AIDS reporting and STI caseload statistics published 3 monthly. The current issue has the updated information up to September 2016.

SPP Surveillance Team:

Dr. Alfred SIT

Mr. Steve YIM

Correspondence to:

Special Preventive Programme,

Centre for Health Protection, Department of Health

c/o Red Ribbon Centre, 2/F Wang Tau Hom Jockey Club Clinic,

200 Junction Road East, Kowloon, Hong Kong

Tel: (852) 3143 7200 Fax: (852) 2338 0534

E-mail: aids@dh.gov.hk

List of Tables / Figures

LIST OF TABLES / FIGURES	92
1. NUMBER OF HIV/AIDS REPORTED	94
TABLE 1.1 SUMMARY TABLE ON THE REPORTED NUMBER OF HIV/AIDS	94
CHART 1.1 NUMBER OF HIV/AIDS REPORTED	97
2. GENDER DISTRIBUTION OF REPORTED HIV/AIDS	98
TABLE 2.1 GENDER DISTRIBUTION OF REPORTED HIV	98
CHART 2.1 GENDER DISTRIBUTION OF REPORTED HIV BY QUARTER	99
CHART 2.2 GENDER DISTRIBUTION OF REPORTED HIV BY YEAR	100
TABLE 2.2 GENDER DISTRIBUTION OF REPORTED AIDS	101
CHART 2.3 GENDER DISTRIBUTION OF REPORTED AIDS BY QUARTER	102
CHART 2.4 GENDER DISTRIBUTION OF REPORTED AIDS BY YEAR	103
3. ETHNICITY OF REPORTED HIV/AIDS	104
TABLE 3.1 DISTRIBUTION OF ETHNICITY OF REPORTED HIV	104
CHART 3.1 DISTRIBUTION OF ETHNICITY OF REPORTED HIV	105
TABLE 3.2 DISTRIBUTION OF ETHNICITY OF REPORTED AIDS	106
CHART 3.2 DISTRIBUTION OF ETHNICITY OF REPORTED AIDS	107
4. AGE DISTRIBUTION OF REPORTED HIV/AIDS	108
TABLE 4.1 AGE DISTRIBUTION OF REPORTED HIV	108
CHART 4.1 AGE DISTRIBUTION OF REPORTED HIV	109
CHART 4.2 AGE GROUP & GENDER OF TOTAL REPORTED HIV	110
TABLE 4.2 AGE DISTRIBUTION OF REPORTED AIDS	111
CHART 4.3 AGE DISTRIBUTION OF REPORTED AIDS	112
CHART 4.4 AGE GROUP & GENDER OF TOTAL REPORTED AIDS	113
5. EXPOSURE CATEGORIES OF REPORTED HIV/AIDS	114
TABLE 5.1 EXPOSURE CATEGORIES OF REPORTED HIV	114
CHART 5.1 EXPOSURE CATEGORIES OF REPORTED HIV	115
TABLE 5.2 EXPOSURE CATEGORIES OF REPORTED AIDS	116
CHART 5.2 EXPOSURE CATEGORIES OF REPORTED AIDS	117
6. RATIO (HETEROSEXUAL : HOMOSEXUAL / BISEXUAL) OF SEXUALLY ACQUIRED HIV INFECTION IN MEN	118

TABLE 6.1 RATIO OF SEXUALLY ACQUIRED INFECTION IN MEN WITH REPORTED HIV/AIDS (HETEROSEXUAL : HOMO / BISEXUAL) BY QUARTER	118
TABLE 6.2 RATIO OF SEXUALLY ACQUIRED INFECTION IN MEN WITH REPORTED HIV/AIDS (HETEROSEXUAL : HOMO / BISEXUAL) BY YEAR	119
7. INJECTING DRUG USERS IN REPORTED HIV/AIDS	120
TABLE 7.1 INJECTING DRUG USERS IN REPORTED HIV/AIDS	120
TABLE 7.2 NUMBER OF INJECTING DRUG USER IN REPORTED HIV/AIDS BY YEAR	121
8. SOURCE OF REFERRAL OF REPORTED HIV/AIDS	122
TABLE 8.1 SOURCE OF REFERRAL OF REPORTED HIV	122
CHART 8.1 SOURCE OF REFERRAL OF REPORTED HIV	123
TABLE 8.2 SOURCE OF REFERRAL OF REPORTED AIDS	124
CHART 8.2 SOURCE OF REFERRAL OF REPORTED AIDS	125
9. DISTRIBUTION OF AIDS DEFINING ILLNESSES	126
TABLE 9.1 DISTRIBUTION OF AIDS DEFINING ILLNESS OF REPORTED AIDS	126
CHART 9.1 AIDS DEFINING ILLNESS OF TOTAL REPORTED AIDS	127
CHART 9.2 AIDS DEFINING ILLNESS OF REPORTED AIDS BY YEAR	128
10. REPORTED SEXUALLY TRANSMITTED INFECTIONS (STIS) DIAGNOSED IN SOCIAL HYGIENE SERVICE	129
TABLE 10.1 SUMMARY TABLE ON THE REPORTED STIS DIAGNOSED IN SOCIAL HYGIENE SERVICE	129
11. GENDER DISTRIBUTION OF REPORTED STIS	131
TABLE 11.1 GENDER DISTRIBUTION OF SELECTED STI REPORTED BY SOCIAL HYGIENE SERVICE	131
TABLE 11.2 GENDER DISTRIBUTION OF REPORTED STI BY CLINIC	133
12. CLINIC DISTRIBUTION	134
CHART 12.1 NUMBER OF NEWLY REPORT STI IN Q3 2016 BY CLINIC (MALE CLIENTS)	134
CHART 12.2 NUMBER OF NEWLY REPORT STI IN Q3 2016 BY CLINIC (FEMALE CLIENTS)	135

1. Number of HIV/AIDS reported

Table 1.1 Summary table on the reported number of HIV/AIDS

	This quarter (Jul - Sep 2016)		Last quarter (Apr - Jun 2016)		Same quarter last year (Jul - Sep 2015)		Cumulative (1984 – Sep 2016)	
	HIV	AIDS	HIV	AIDS	HIV	AIDS	HIV	AIDS
Sex								
Male	166	33	163	23	167	15	6668	1454
Female	24	8	25	5	22	4	1575	287
Ethnicity/race								
Chinese	148	33	135	18	141	15	5,636	1,335
Non-Chinese	32	8	42	10	44	4	2,450	406
<i>Asian</i>	15	6	19	7	25	1	1,219	268
<i>White</i>	1	0	9	1	10	2	526	95
<i>Black</i>	6	2	7	2	3	1	204	39
<i>Others</i>	10	0	7	0	6	0	501	4
Unknown	10	0	11	0	4	0	157	0

(to be cont'd)

Table 1.1 (cont'd)

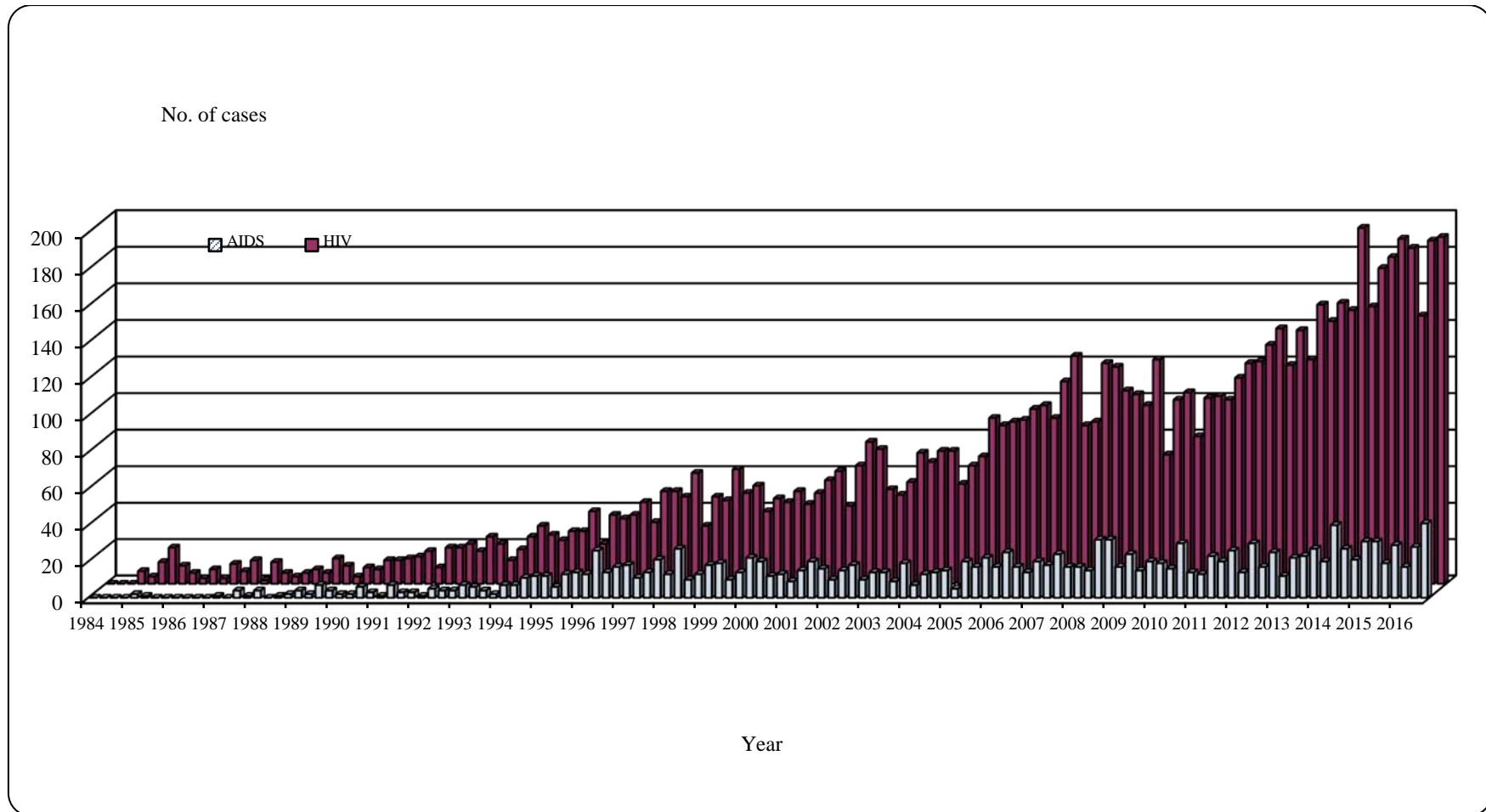
	This quarter (Jul - Sep 2016)		Last quarter (Apr - Jun 2016)		Same quarter last year (Jul - Sep 2015)		Cumulative (1984 – Sep 2016)	
	HIV	AIDS	HIV	AIDS	HIV	AIDS	HIV	AIDS
Age at diagnosis								
Adult	190	41	188	28	189	19	8192	1727
Child (age 13 or less)	0	0	0	0	0	0	51	14
Exposure category								
Heterosexual	38	20	46	12	42	8	2920	957
Homosexual	85	12	100	8	110	10	3078	474
Bisexual	13	4	15	5	13	0	379	86
Injecting drug use	1	1	2	0	3	0	350	64
Blood / blood product infusion	0	0	0	0	0	0	84	24
Perinatal	0	0	0	0	0	0	29	9
Undetermined	53	4	25	3	21	1	1403	127

(to be cont'd)

Table 1.1 (Cont'd)

	This quarter (Jul - Sep 2016)		Last quarter (Apr - Jun 2016)		Same quarter last year (Jul - Sep 2015)		Cumulative (1984 – Sep 2016)	
	HIV	AIDS	HIV	AIDS	HIV	AIDS	HIV	AIDS
Source of referral								
Public hospitals / clinics / laboratories	73	36	73	20	71	11	3336	1325
Private hospitals / clinics / laboratories	40	3	38	7	23	4	1713	230
Social Hygiene Clinics	22	1	34	0	25	2	1152	61
DH AIDS Unit	23	0	11	1	24	2	1050	98
AIDS service organisations (NGOs)	28	1	28	0	36	0	715	12
Hong Kong Red Cross Blood Transfusion Service	2	0	2	0	5	0	151	9
Drug rehabilitation services	2	0	2	0	5	0	126	6
Total	190	41	188	28	189	19	8243	1741

Chart 1.1 Number of HIV/AIDS reported



2. Gender distribution of reported HIV/AIDS

Table 2.1 Gender distribution of reported HIV

	This quarter (Jul - Sep 2016)	Last quarter (Apr - Jun 2016)	Same quarter last year (Jul - Sep 2015)	Cumulative (1984 – Sep 2016)
Male	166	163	167	6,668
Female	24	25	22	1,575
Total	190	188	189	8,243

Chart 2.1 Gender distribution of reported HIV by quarter

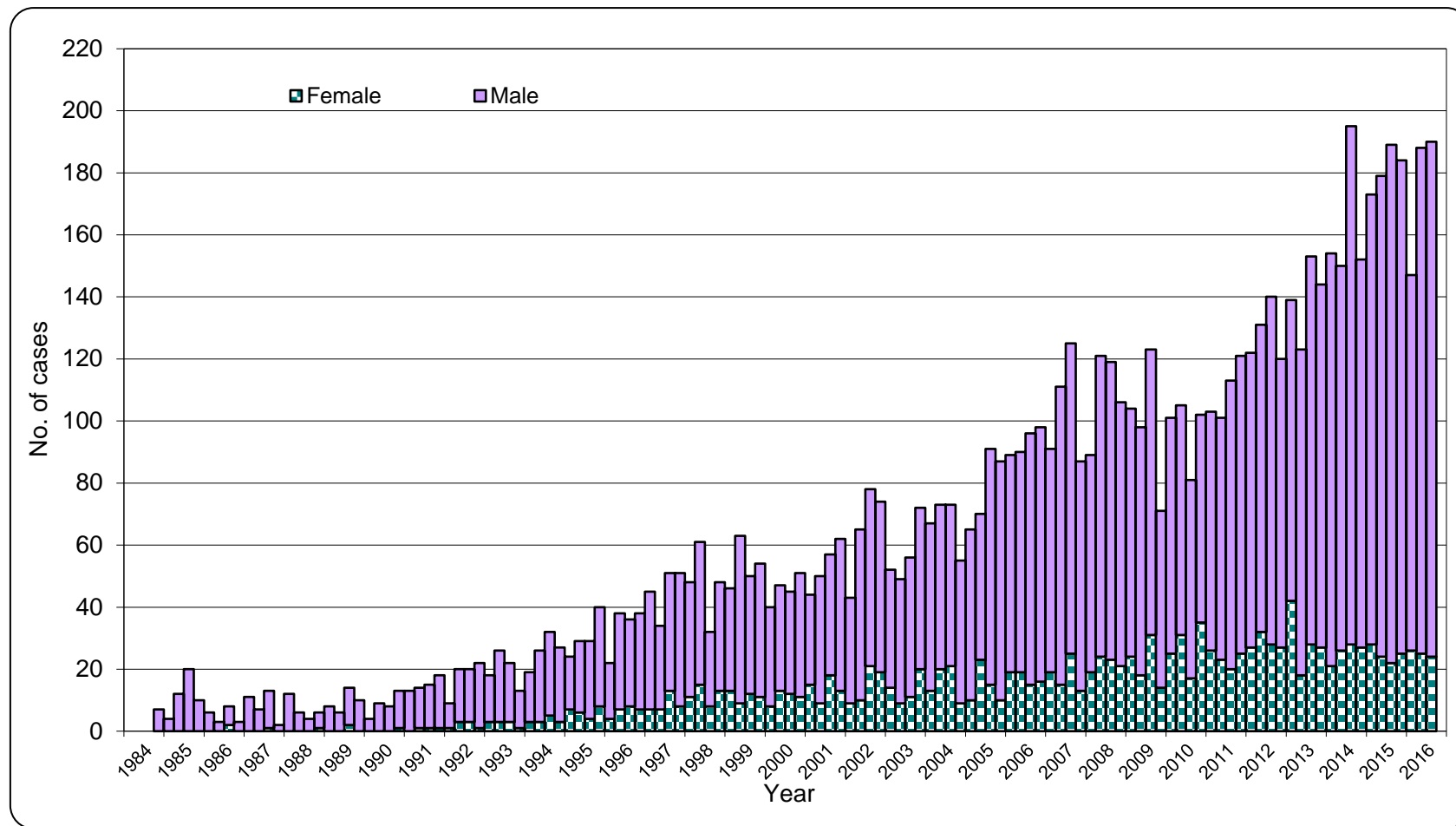


Chart 2.2 Gender distribution of reported HIV by year

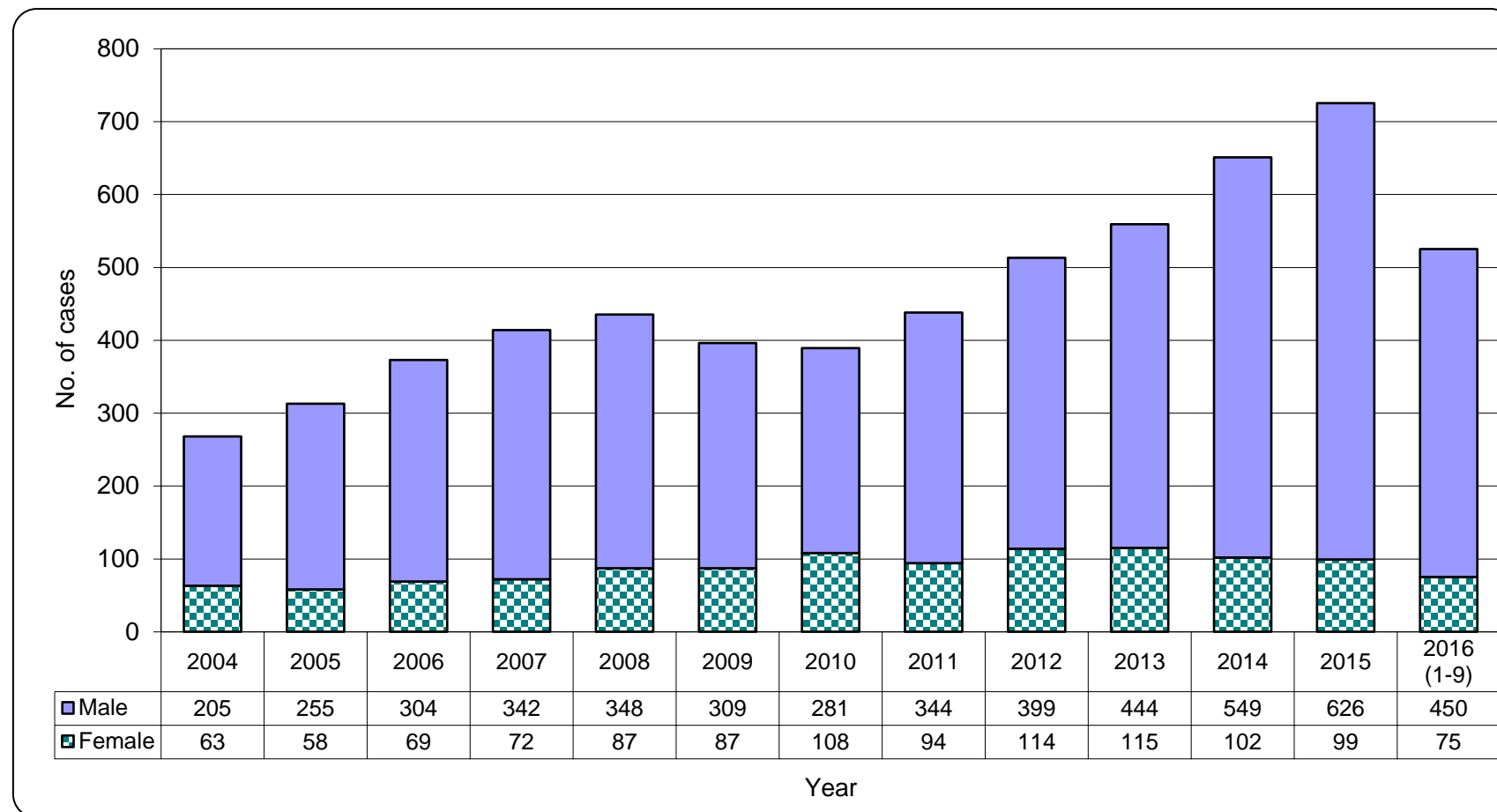


Table 2.2 Gender distribution of reported AIDS

	This quarter (Jul - Sep 2016)	Last quarter (Apr - Jun 2016)	Same quarter last year (Jul - Sep 2015)	Cumulative (1984 – Sep 2016)
Male	33	23	15	1,454
Female	8	5	4	287
Total	41	28	19	1,741

Chart 2.3 Gender distribution of reported AIDS by quarter

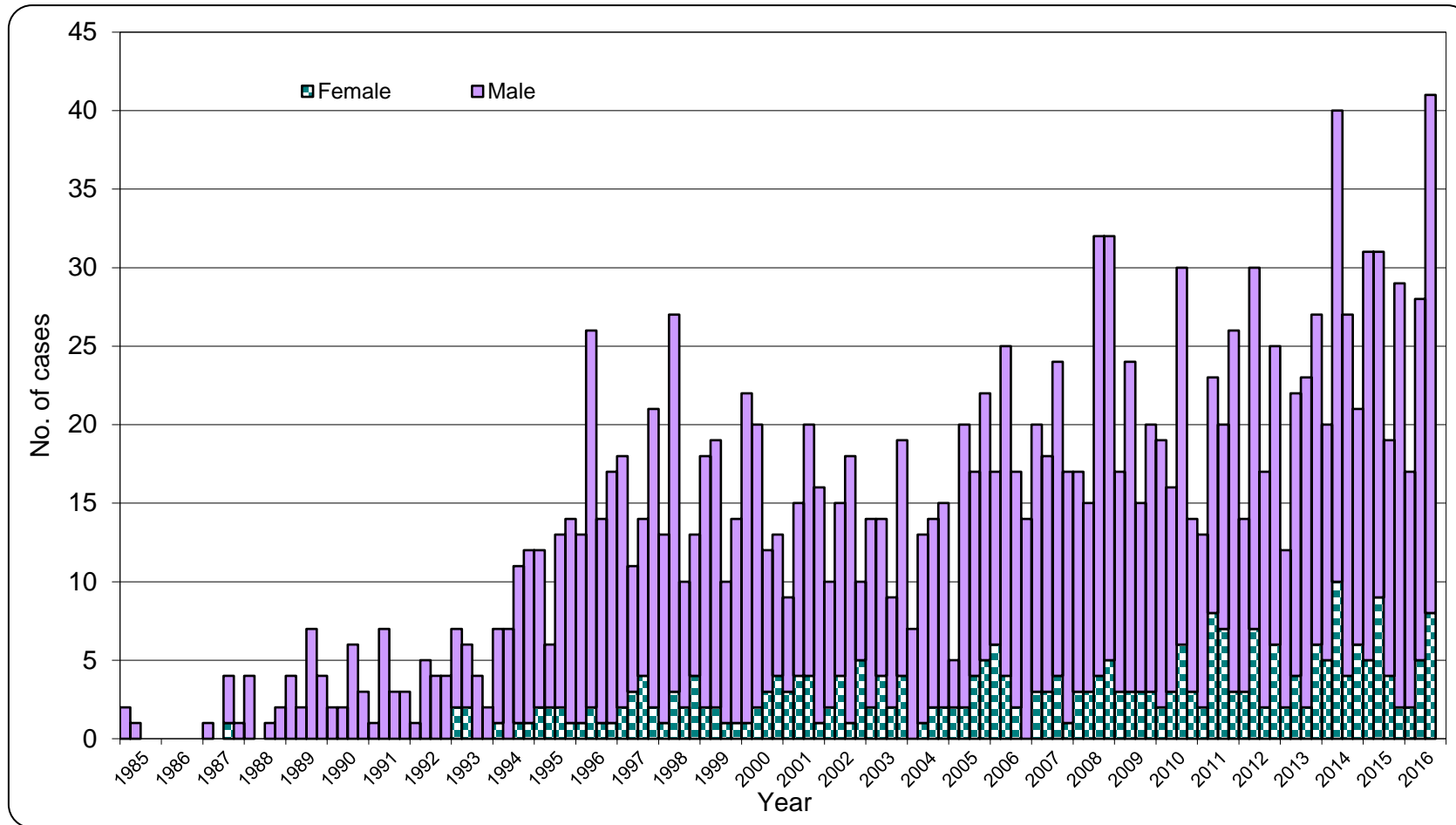
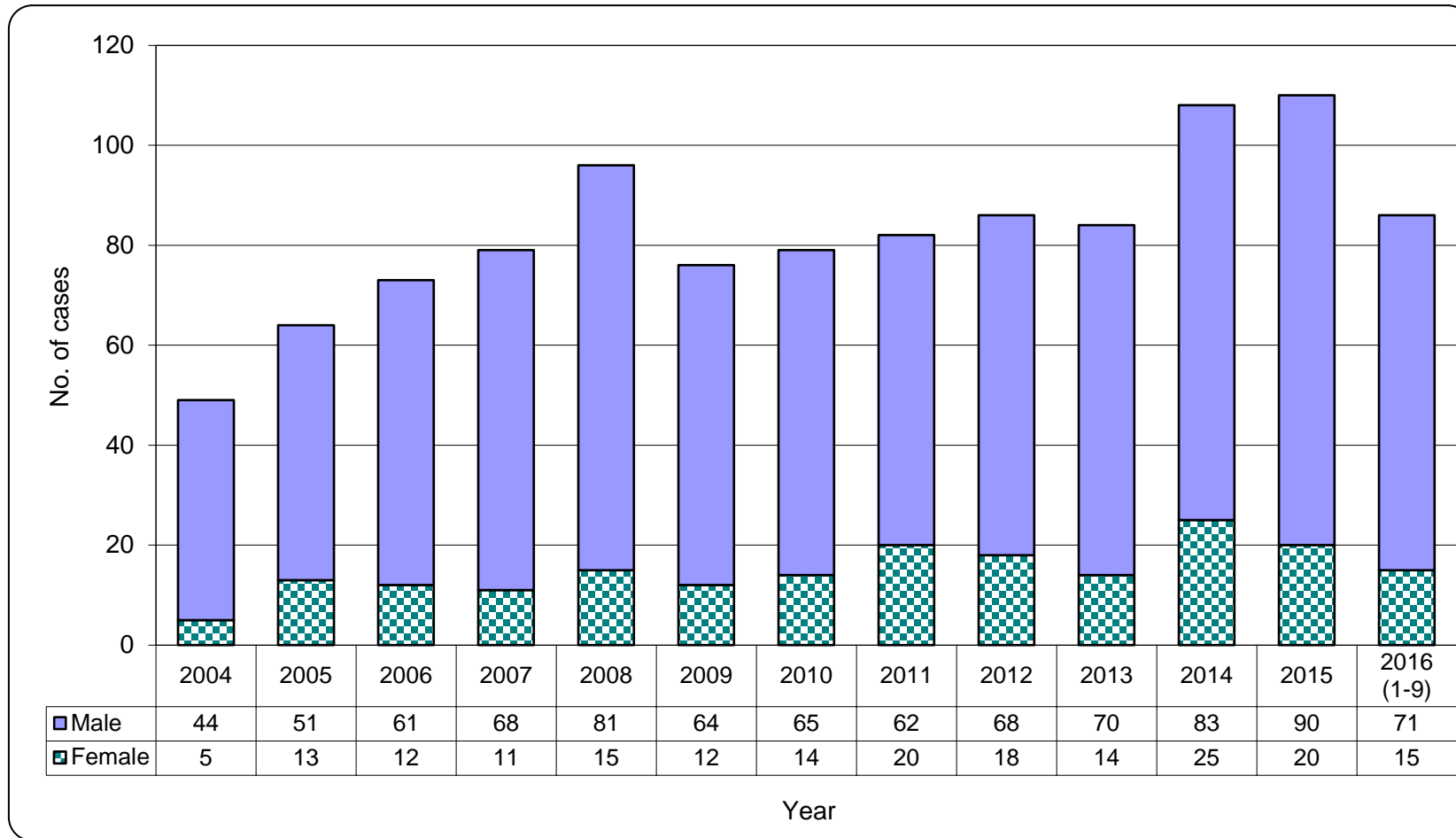


Chart 2.4 Gender distribution of reported AIDS by year



3. Ethnicity of reported HIV/AIDS

Table 3.1 Distribution of ethnicity of reported HIV

	This quarter (Jul - Sep 2016)	Last quarter (Apr - Jun 2016)	Same quarter last year (Jul - Sep 2015)	Cumulative (1984 – Sep 2016)
Chinese	148	135	141	5,636
Non-Chinese	32	42	44	2,450
<i>Asian</i>	15	19	25	1,219
<i>White</i>	1	9	10	526
<i>Black</i>	6	7	3	204
<i>Others</i>	10	7	6	501
Unknown	10	11	4	157
Total	190	188	189	8,243

Chart 3.1 Distribution of ethnicity of reported HIV

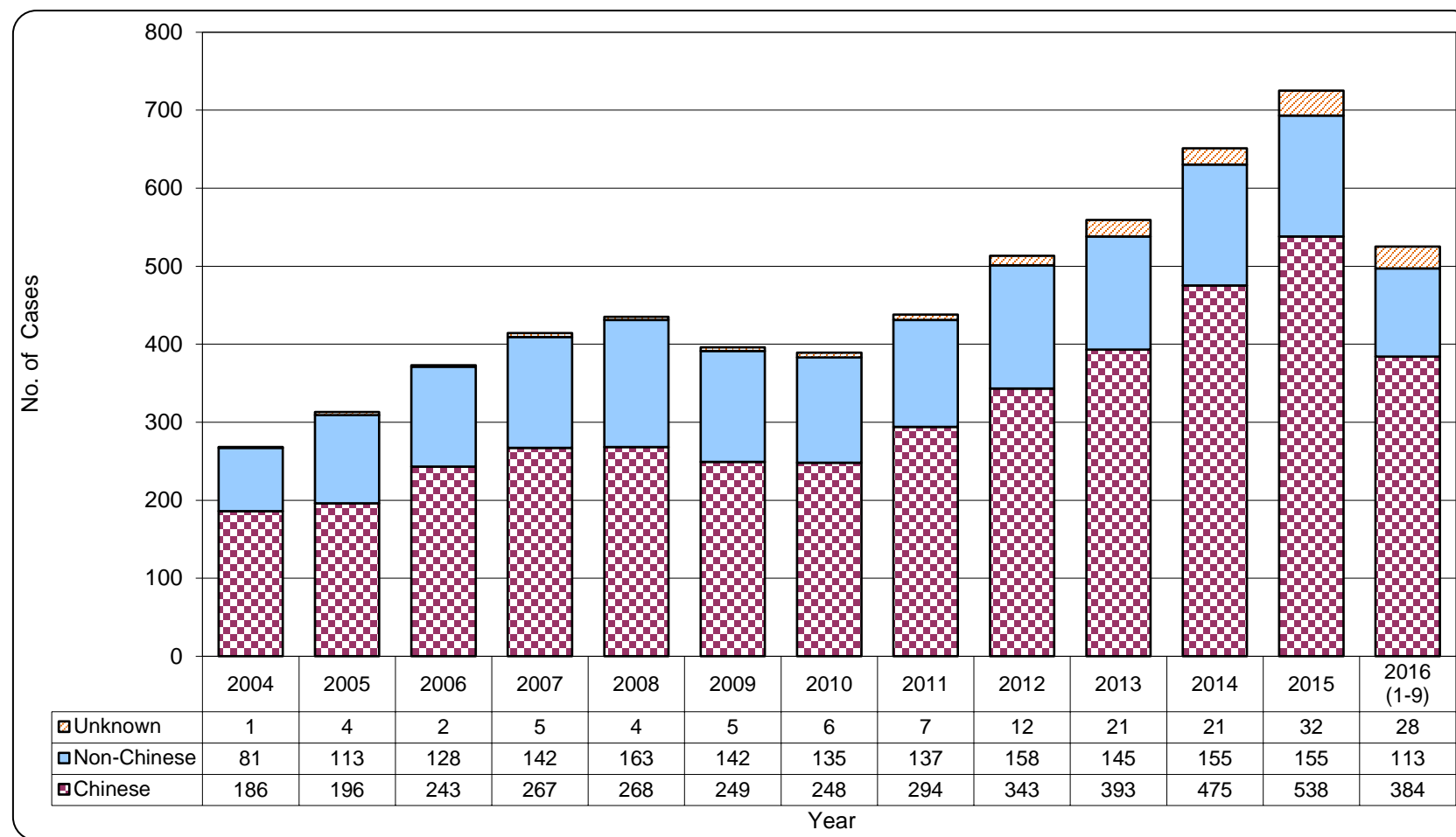
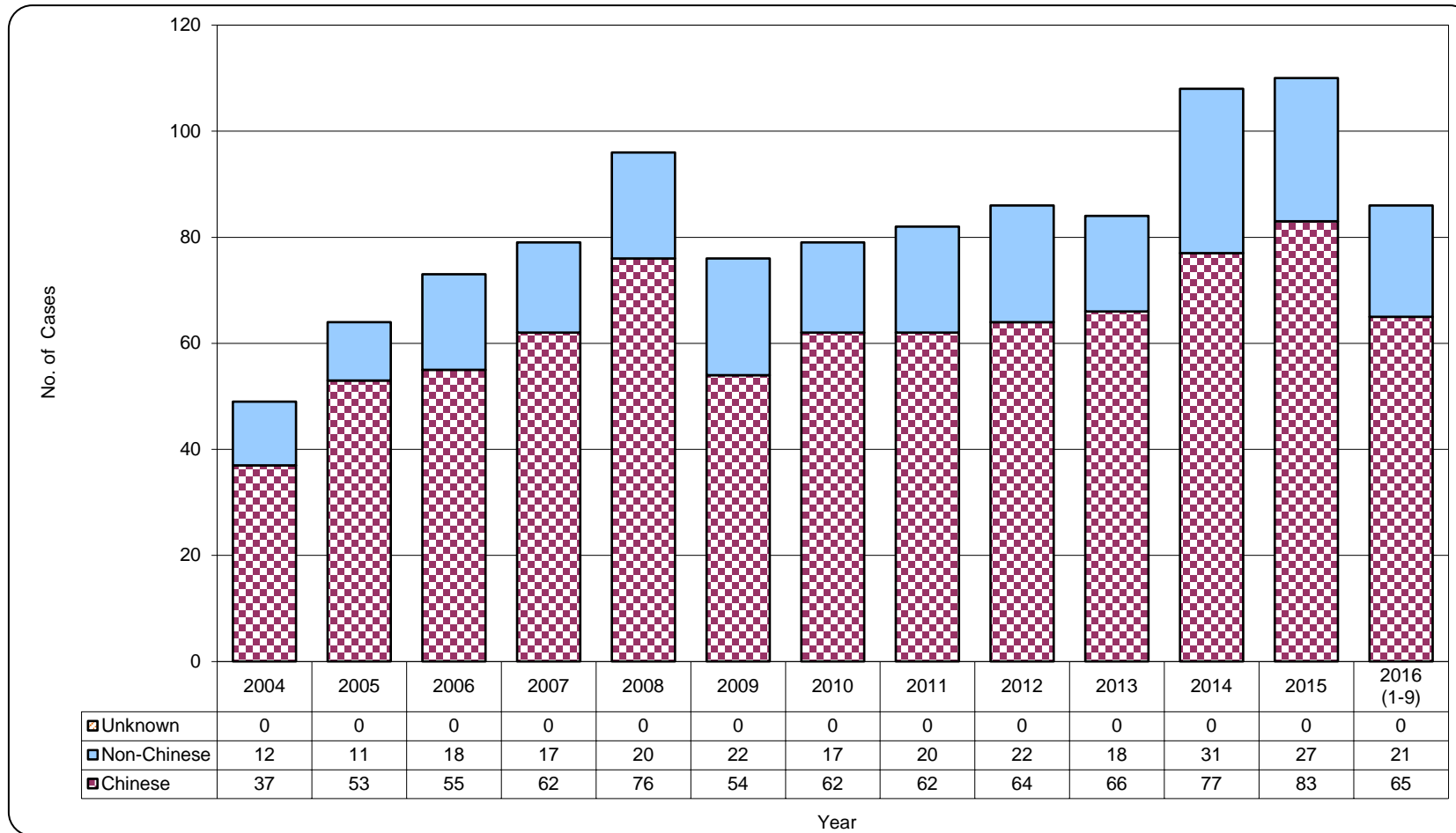


Table 3.2 Distribution of ethnicity of reported AIDS

	This quarter (Jul - Sep 2016)	Last quarter (Apr - Jun 2016)	Same quarter last year (Jul - Sep 2015)	Cumulative (1984 – Sep 2016)
Chinese	33	18	15	1,335
Non-Chinese	8	10	4	406
<i>Asian</i>	6	7	1	268
<i>White</i>	0	1	2	95
<i>Black</i>	2	2	1	39
<i>Others</i>	0	0	0	4
Unknown	0	0	0	0
Total	41	28	19	1,741

Chart 3.2 Distribution of ethnicity of reported AIDS



4. Age distribution of reported HIV/AIDS

Table 4.1 Age distribution of reported HIV

	This quarter (Jul - Sep 2016)	Last quarter (Apr - Jun 2016)	Same quarter last year (Jul - Sep 2015)	Cumulative (1984 – Sep 2016)
Adult	190	188	189	8,192
Child (age 13 or less)	0	0	0	51
Total	190	188	189	8,243

Chart 4.1 Age distribution of reported HIV

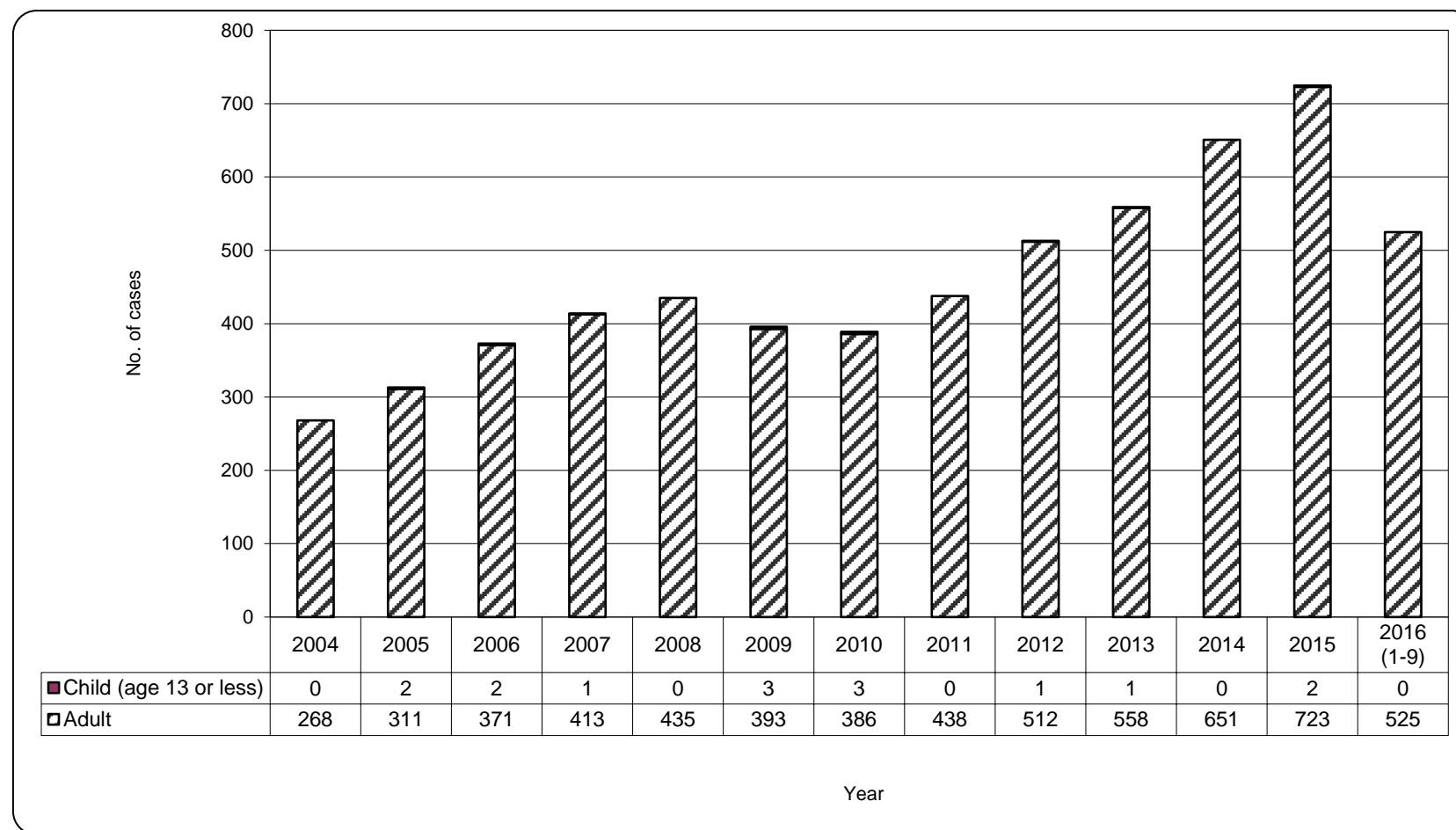


Chart 4.2 Age group & gender of total reported HIV

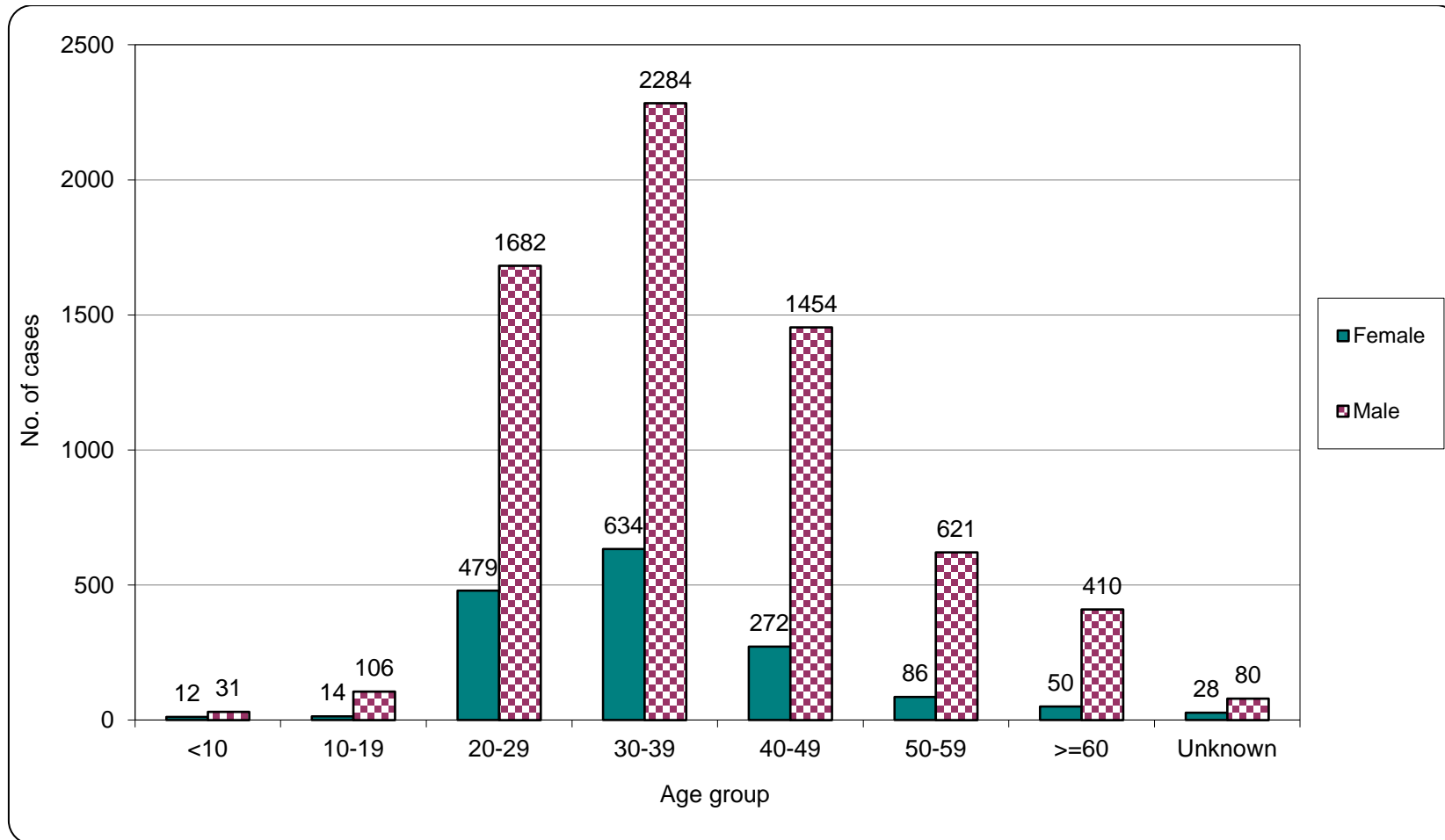


Table 4.2 Age distribution of reported AIDS

	This quarter (Jul - Sep 2016)	Last quarter (Apr - Jun 2016)	Same quarter last year (Jul - Sep 2015)	Cumulative (1984 – Sep 2016)
Adult	41	28	19	1,727
Child (age 13 or less)	0	0	0	14
Total	41	28	19	1,741

Chart 4.3 Age distribution of reported AIDS

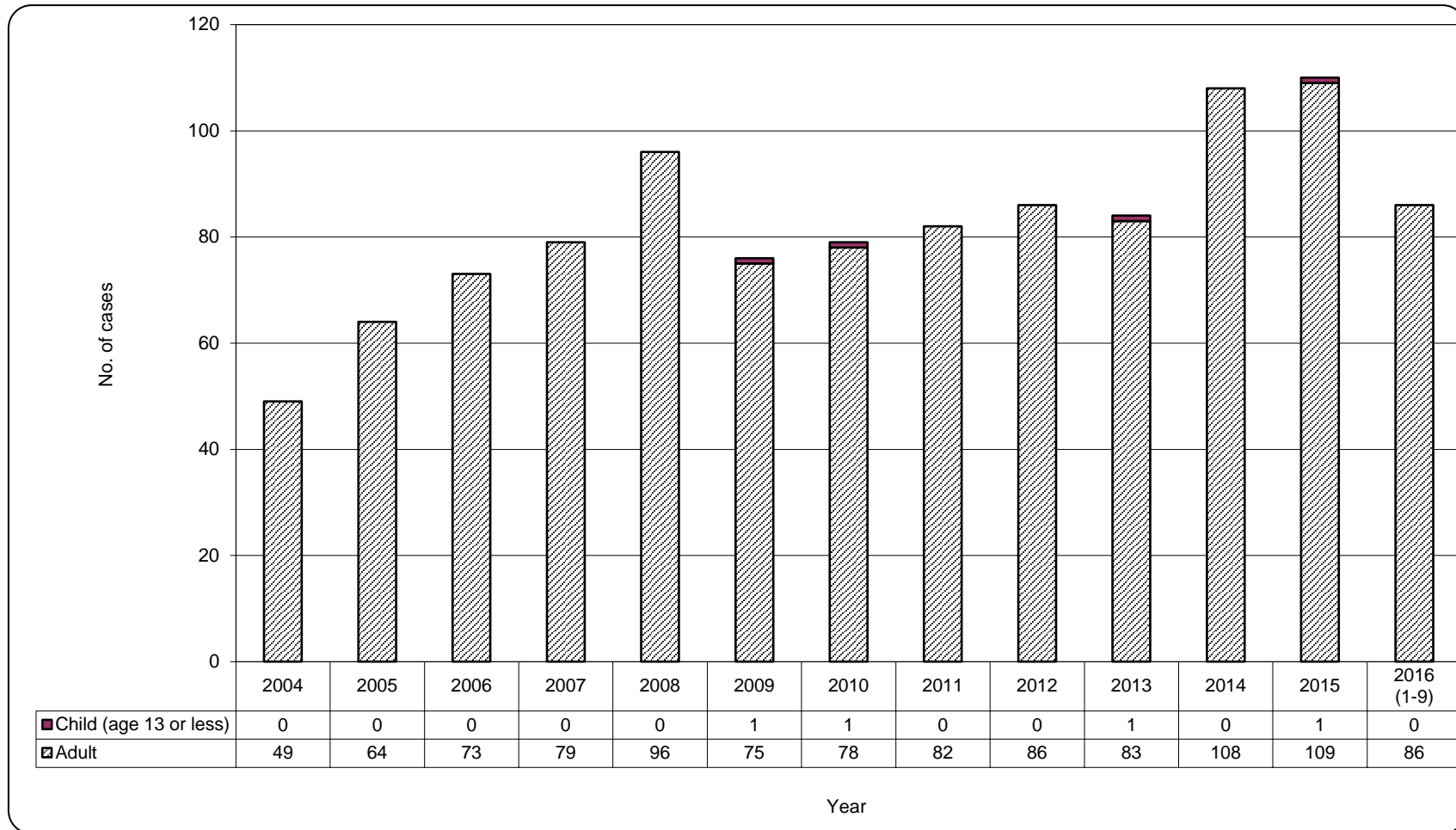
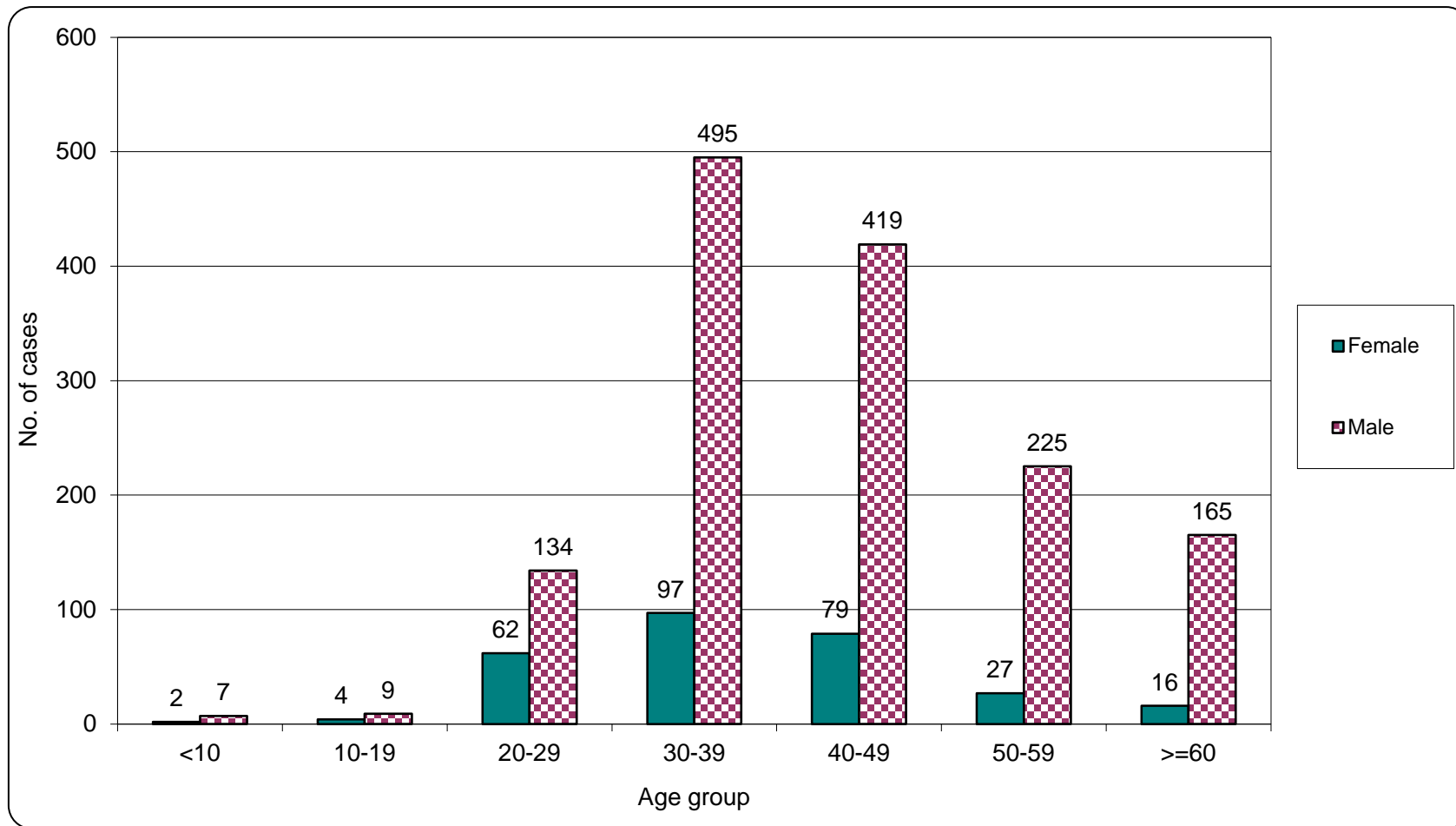


Chart 4.4 Age group & gender of total reported AIDS



5. Exposure categories of reported HIV/AIDS

Table 5.1 Exposure categories of reported HIV

	This quarter (Jul - Sep 2016)	Last quarter (Apr - Jun 2016)	Same quarter last year (Jul - Sep 2015)	Cumulative (1984 – Sep 2016)
Heterosexual	38	46	42	2920
Homosexual	85	100	110	3078
Bisexual	13	15	13	379
Injecting drug use	1	2	3	350
Blood / blood product infusion	0	0	0	84
Perinatal	0	0	0	29
Undetermined	53	25	21	1403
Total	190	188	189	8,243

Chart 5.1 Exposure categories of reported HIV

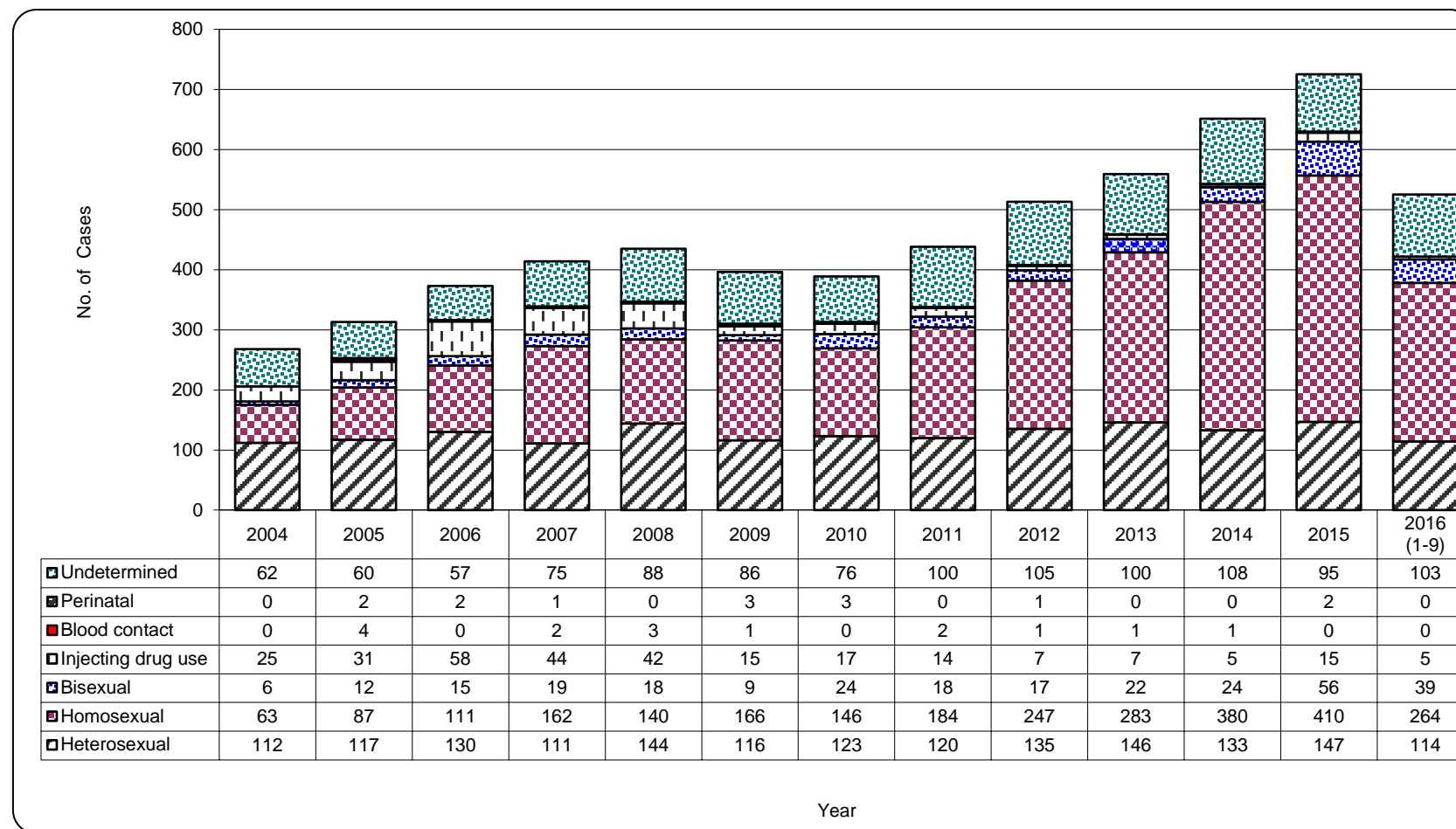
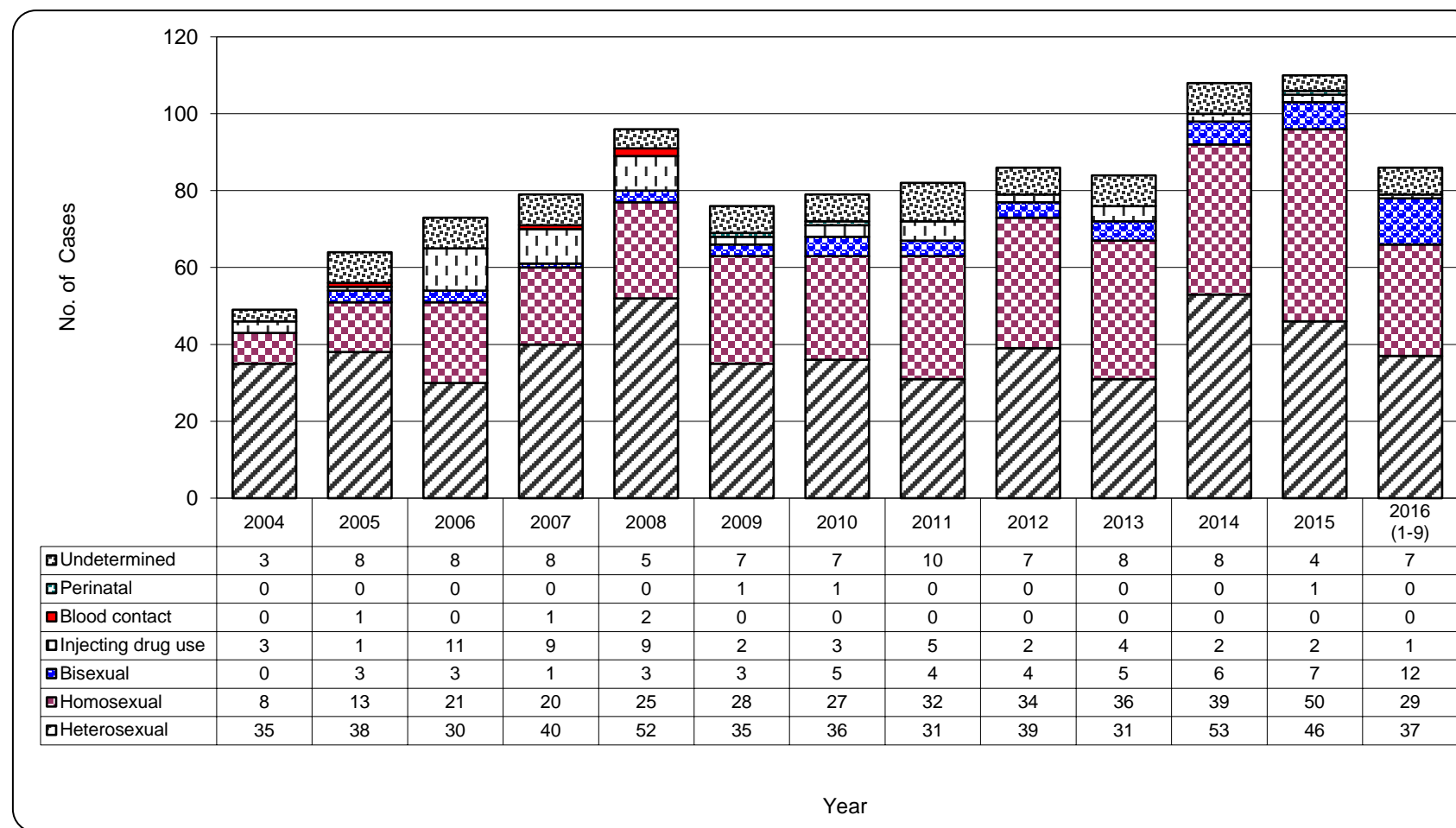


Table 5.2 Exposure categories of reported AIDS

	This quarter (Jul - Sep 2016)	Last quarter (Apr - Jun 2016)	Same quarter last year (Jul - Sep 2015)	Cumulative (1984 – Sep 2016)
Heterosexual	20	12	8	957
Homosexual	12	8	10	474
Bisexual	4	5	0	86
Injecting drug use	1	0	0	64
Blood / blood product infusion	0	0	0	24
Perinatal	0	0	0	9
Undetermined	4	3	1	127
Total	41	28	19	1,741

Chart 5.2 Exposure categories of reported AIDS



6. Ratio (heterosexual : homosexual / bisexual) of sexually acquired HIV infection in men

Table 6.1 Ratio of sexually acquired infection in men with reported HIV/AIDS (heterosexual : homo / bisexual) by quarter

	This quarter (Jul - Sep 2016)	Last quarter (Apr - Jun 2016)	Same quarter last year (Jul - Sep 2015)	Cumulative (1984 – Sep 2016)
HIV	0.2 : 1	0.3 : 1	0.2 : 1	0.5 : 1
AIDS	0.8 : 1	0.6 : 1	0.4 : 1	1.2 : 1

Table 6.2 Ratio of sexually acquired infection in men with reported HIV/AIDS (heterosexual : homo / bisexual) by year

	2005	2006	2007	2008	2009	2010	2011	2012	2013	2014	2015	2016 (1-9)	1984 – Sep 2016
HIV	0.8 : 1	0.7 : 1	0.4 : 1	0.6 : 1	0.4 : 1	0.4 : 1	0.3 : 1	0.3 : 1	0.2 : 1	0.2 : 1	0.2 : 1	0.2 : 1	0.5 : 1
AIDS	1.8 : 1	0.8 : 1	1.5 : 1	1.4 : 1	0.8 : 1	0.8 : 1	0.4 : 1	0.6 : 1	0.4 : 1	0.7 : 1	0.5 : 1	0.6 : 1	1.2 : 1

7. Injecting drug users in reported HIV/AIDS

Table 7.1 Injecting drug users in reported HIV/AIDS

	This quarter (Jul - Sep 2016)	Last quarter (Apr - Jun 2016)	Same quarter last year (Jul - Sep 2015)	Cumulative (1984 – Sep 2016)
HIV (% of reported HIV)	1 0.5%	2 1.1%	3 1.6%	350 4.2%
AIDS (% of reported AIDS)	1 2.4%	0 0.0%	0 0.0%	64 3.7%

Table 7.2 Number of injecting drug user in reported HIV/AIDS by year

	2005	2006	2007	2008	2009	2010	2011	2012	2013	2014	2015	2016 (1-9)	1984 – Sep 2016
HIV (% of reported HIV)	31 (9.9%)	58 (15.5%)	44 (10.6%)	42 (9.7%)	15 (3.8%)	17 (4.4%)	14 (3.2%)	7 (1.4%)	7 (1.3%)	5 (0.8%)	15 (2.1%)	5 (1.0%)	350 (4.2%)
AIDS (% of reported AIDS)	1 (1.6%)	11 (15.1%)	9 (11.4%)	9 (9.4%)	2 (2.6%)	3 (3.8%)	5 (6.1%)	2 (2.3%)	4 (4.8%)	2 (1.9%)	2 (1.8%)	1 (1.2%)	64 (3.7%)

8. Source of referral of reported HIV/AIDS

Table 8.1 Source of referral of reported HIV

	This quarter (Jul - Sep 2016)	Last quarter (Apr - Jun 2016)	Same quarter last year (Jul - Sep 2015)	Cumulative (1984 – Sep 2016)
Public hospitals / clinics / laboratories	73	73	71	3336
Private hospitals / clinics / laboratories	40	38	23	1713
Social Hygiene Clinics	22	34	25	1152
DH AIDS unit	23	11	24	1050
AIDS service organisations (NGOs)	28	28	36	715
Hong Kong Red Cross Blood Transfusion Service	2	2	5	151
Drug rehabilitation services	2	2	5	126
Total	190	188	189	8,243

Chart 8.1 Source of referral of reported HIV

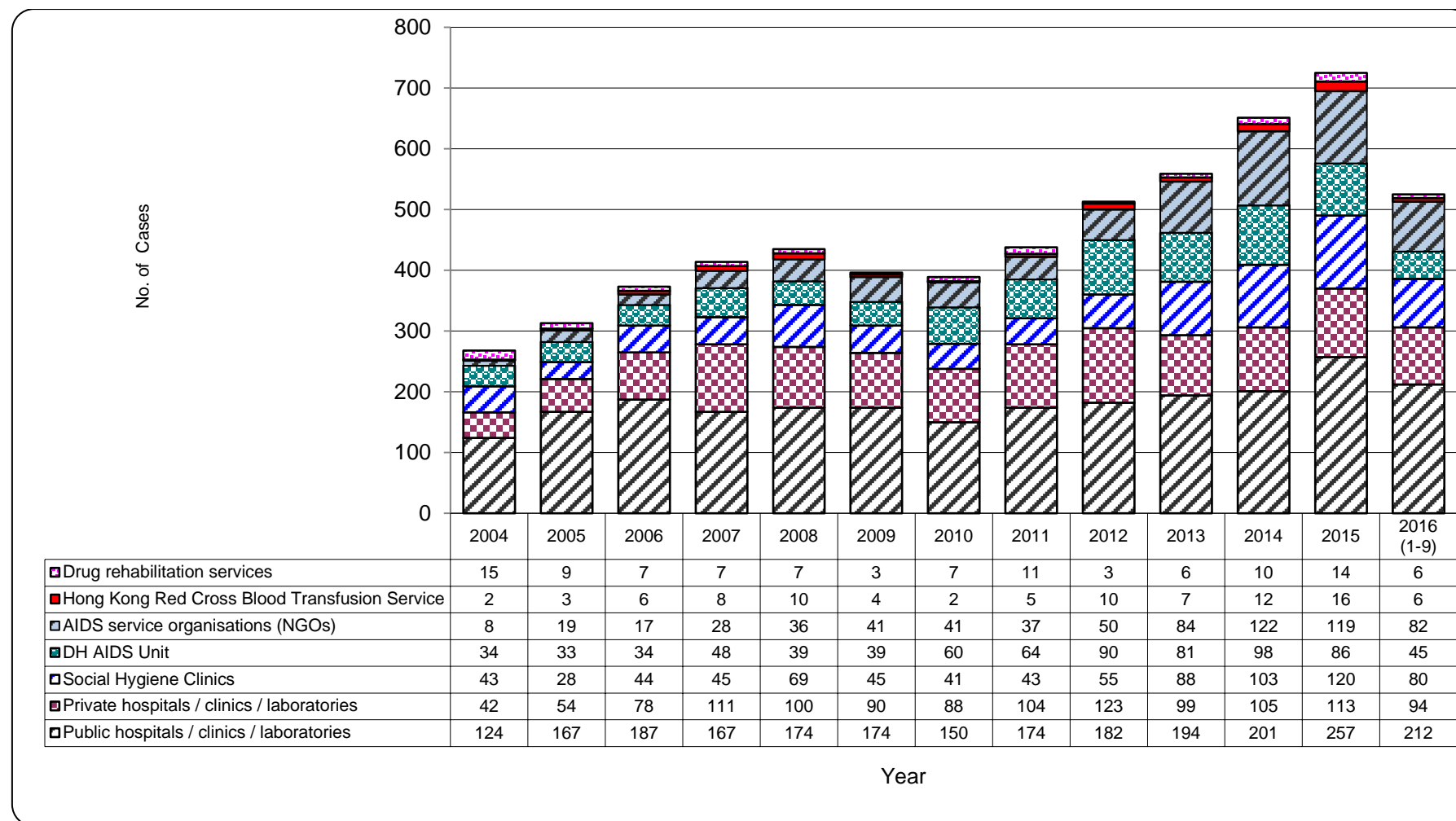
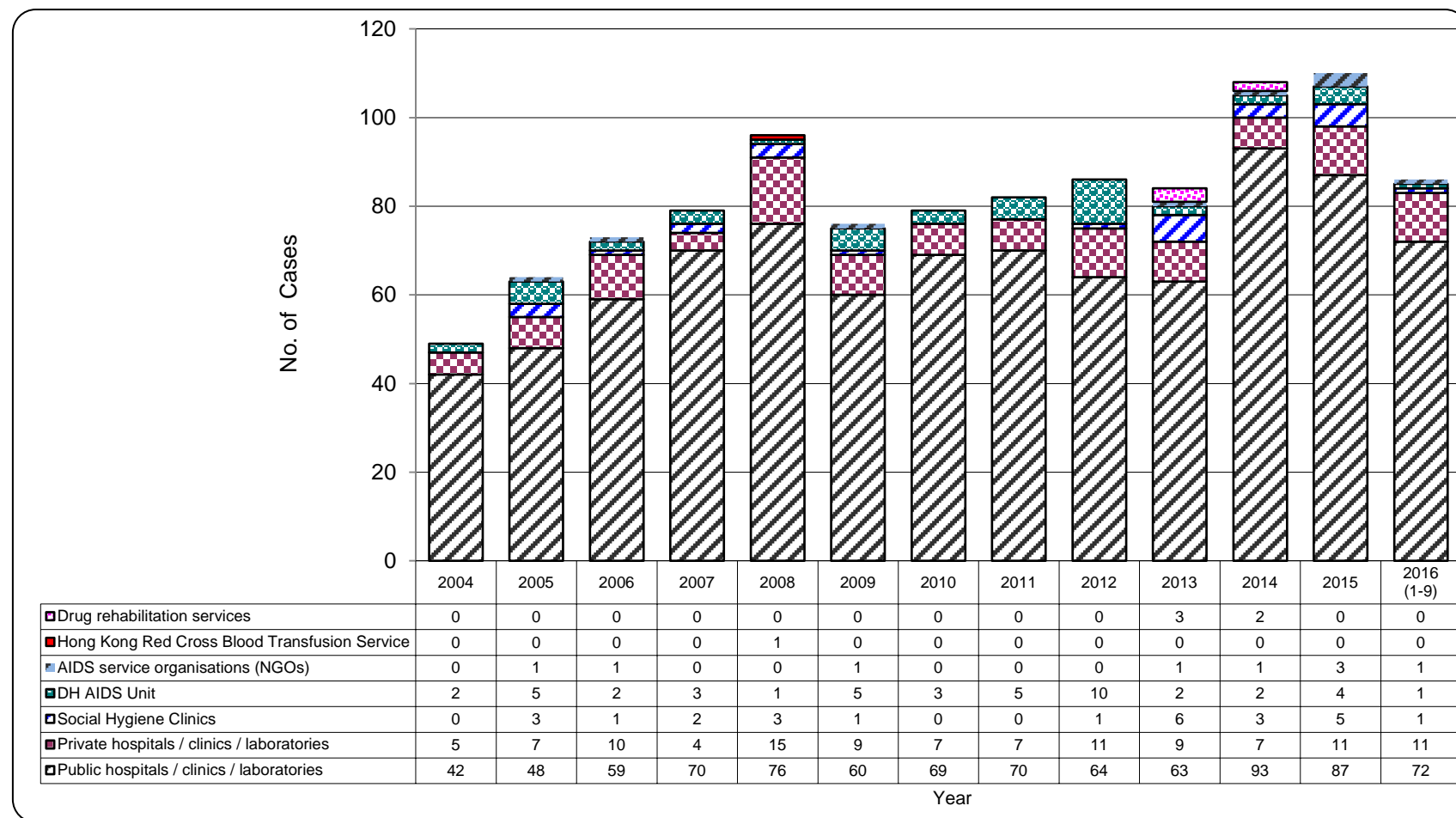


Table 8.2 Source of referral of reported AIDS

	This quarter (Jul - Sep 2016)	Last quarter (Apr - Jun 2016)	Same quarter last year (Jul - Sep 2015)	Cumulative (1984 – Sep 2016)
Public hospitals / clinics / laboratories	36	20	11	1325
Private hospitals / clinics / laboratories	3	7	4	230
Social Hygiene Clinics	1	0	2	61
DH AIDS unit	0	1	2	98
AIDS service organisations (NGOs)	1	0	0	12
Hong Kong Red Cross Blood Transfusion Service	0	0	0	9
Drug rehabilitation services	0	0	0	6
Total	41	28	19	1,741

Chart 8.2 Source of referral of Reported AIDS

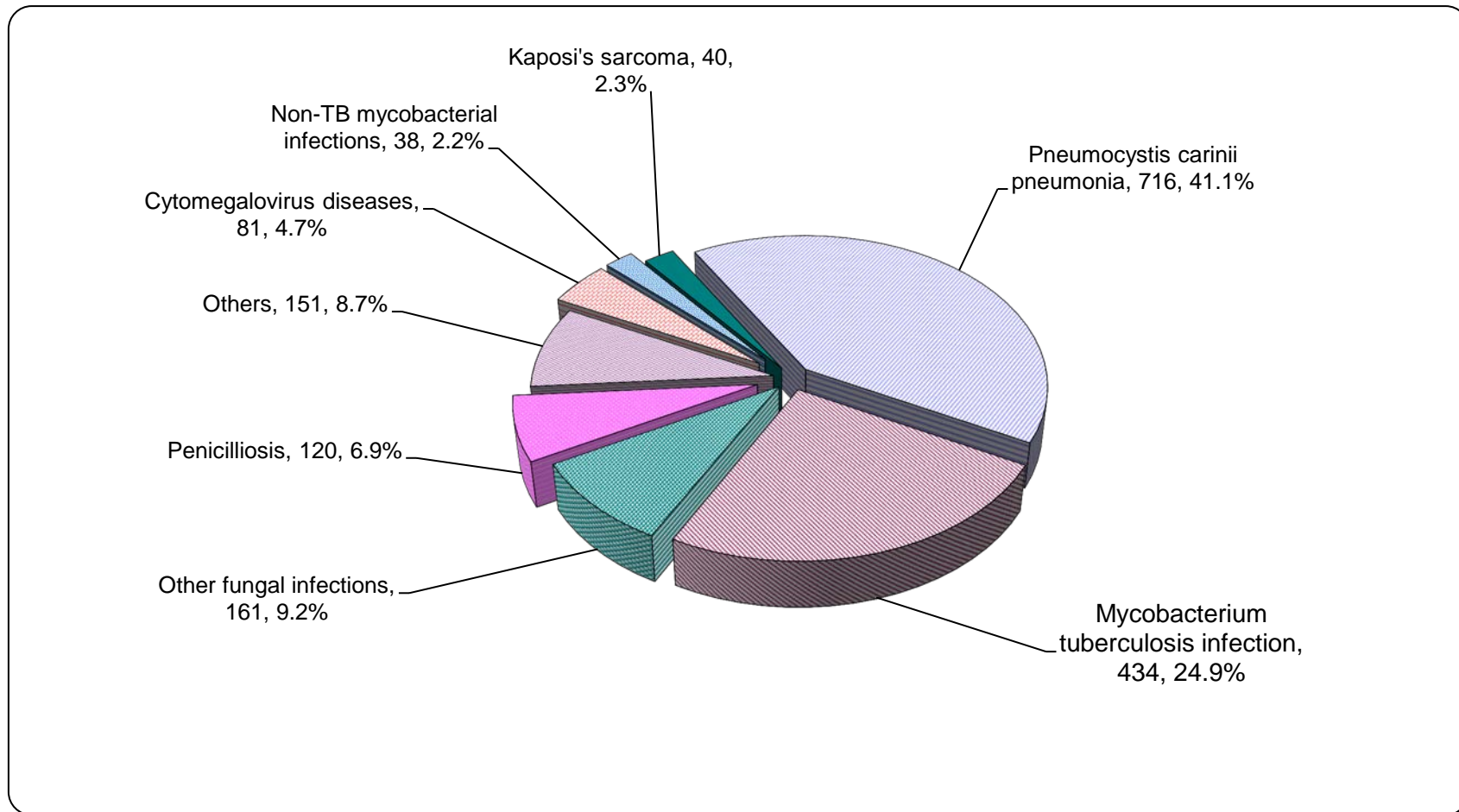


9. Distribution of AIDS defining illnesses

Table 9.1 Distribution of AIDS defining illness of reported AIDS

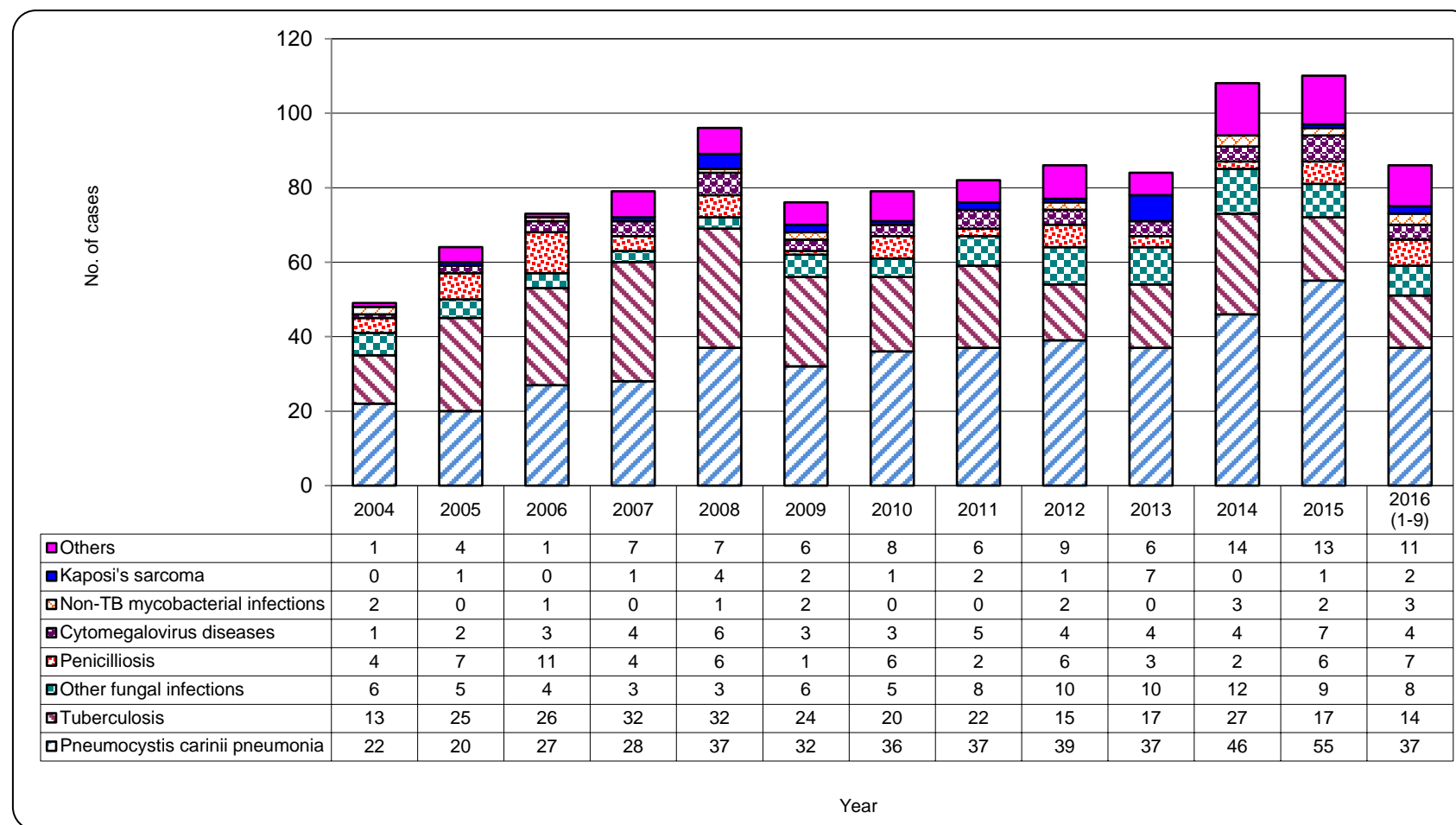
	This quarter (Jul - Sep 2016)	Last quarter (Apr - Jun 2016)	Same quarter last year (Jul - Sep 2015)	Cumulative (1984 – Sep 2016)
<i>Pneumocystis carinii pneumonia</i>	18	11	7	716
<i>Mycobacterium tuberculosis</i>	8	4	2	434
Other fungal infections	5	3	2	161
Penicilliosis	3	2	2	120
Cytomegalovirus diseases	1	2	2	81
Non-TB mycobacterial infections	3	0	1	38
Kaposi's sarcoma	1	0	1	40
Others	2	6	2	151
Total	41	28	19	1,741

Chart 9.1 AIDS defining illness of total reported AIDS



Format: [ADI; Number; %]

Chart 9.2 AIDS defining illness of reported AIDS by year



10. Reported sexually transmitted infections (STIs) diagnosed in Social Hygiene Service

Table 10.1 Summary table on the reported STIs diagnosed in Social Hygiene Service

	This quarter (Jul - Sep 2016)	Last quarter (Apr - Jun 2016)	Same quarter last year (Jul - Sep 2015)	In year 2015
Syphilis				
<i>Primary</i>	8	8	12	53
<i>Secondary</i>	47	35	48	179
<i>Early latent</i>	36	44	34	130
<i>Late latent</i>	163	188	175	738
<i>Late (cardiovascular / neuro /ocular)</i>	5	1	0	4
<i>Congenital (early)</i>	0	0	0	0
<i>Congenital (late)</i>	0	0	0	3
Syphilis total	259	276	269	1,107

(to be cont'd)

Table 10.1 (Cont'd)

	This quarter (Jul - Sep 2016)	Last quarter (Apr - Jun 2016)	Same quarter last year (Jul - Sep 2015)	In year 2015
Gonorrhoea	383	340	345	1,357
Non-gonococcal urethritis (Male)	951	916	925	3,544
Non-specific genital infection (Female)	565	568	562	2,216
Genital wart	511	493	505	1,953
<i>Herpes genitalis</i>	207	221	204	772
Pediculosis pubis	9	5	6	26
Trichomonas	75	89	91	349
Genital ulcer	5	3	3	6
Chancroid / <i>Lymphogranuloma venereum</i>	1	1	0	0
Others	344	280	473	1,451
Total	3,310	3,192	3,383	12,781

11. Gender distribution of reported STIs

Table 11.1 Gender distribution of selected STI reported by Social Hygiene Service

	This quarter (Jul - Sep 2016)	Last quarter (Apr - Jun 2016)	Same quarter last year (Jul - Sep 2015)	In year 2015
Primary Syphilis				
Male (M)	8	8	11	52
Female (F)	0	0	1	1
M:F	N.A.	N.A.	11.0 : 1	52.0 : 1
Gonorrhoea				
Male (M)	338	295	311	1,191
Female (F)	45	45	34	166
M:F	7.5 : 1	6.6 : 1	9.1 : 1	7.2 : 1
NGU / NSGI *				
Male (M)	951	916	925	3,544
Female (F)	565	568	562	2,216
M:F	1.7 : 1	1.6 : 1	1.6 : 1	1.6 : 1

(to be cont'd)

Table 11.1 (Cont'd)

	This quarter (Jul - Sep 2016)	Last quarter (Apr - Jun 2016)	Same quarter last year (Jul - Sep 2015)	In year 2015
Genital wart				
Male (M)	360	342	358	1,405
Female (F)	151	151	147	548
M:F	2.4 : 1	2.3 : 1	2.4 : 1	2.6 : 1
<i>Herpes genitails</i>				
Male (M)	134	136	142	515
Female (F)	73	85	62	257
M:F	1.8 : 1	1.6 : 1	2.3 : 1	2.0 : 1

* NGU = Non-gonococcal urethritis

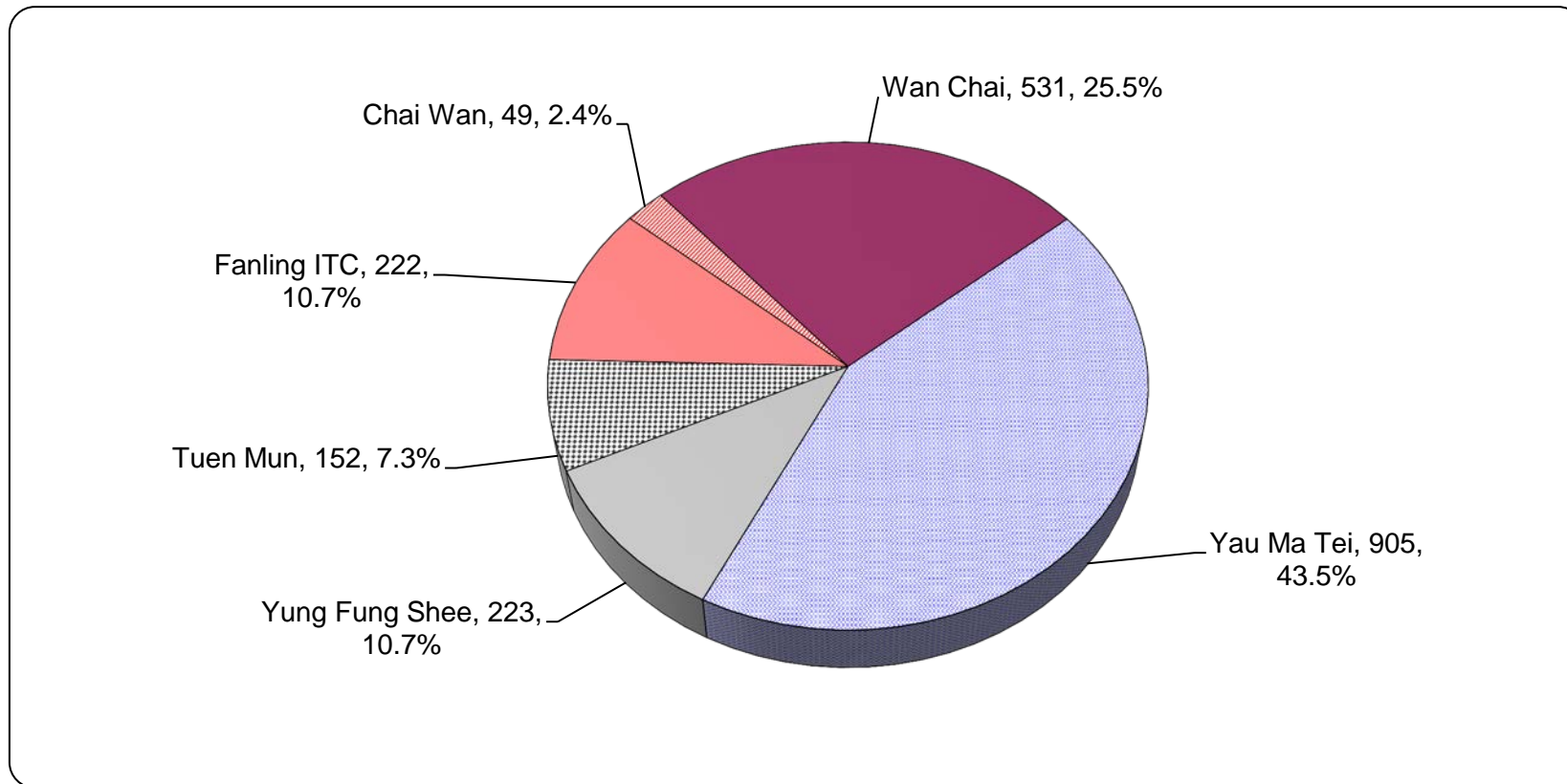
NSGI = Non-specific genital infection

Table 11.2 Gender distribution of reported STI by clinic

	This quarter (Jul - Sep 2016)		Last quarter (Apr - Jun 2016)		Same quarter last year (Jul - Sep 2015)		In year 2015	
	Male	Female	Male	Female	Male	Female	Male	Female
Chai Wan	49	30	44	32	45	52	178	158
Wan Chai	531	256	518	263	538	273	2,094	1,117
Yau Ma Tei	905	584	840	564	984	581	3,465	2,134
Yung Fung Shee	223	126	223	104	250	112	905	516
Tuen Mun	152	103	176	129	145	108	590	470
Fanling ITC	222	129	179	120	196	99	745	409
Total	2,082	1,228	1,980	1,212	2,158	1,225	7,977	4,804

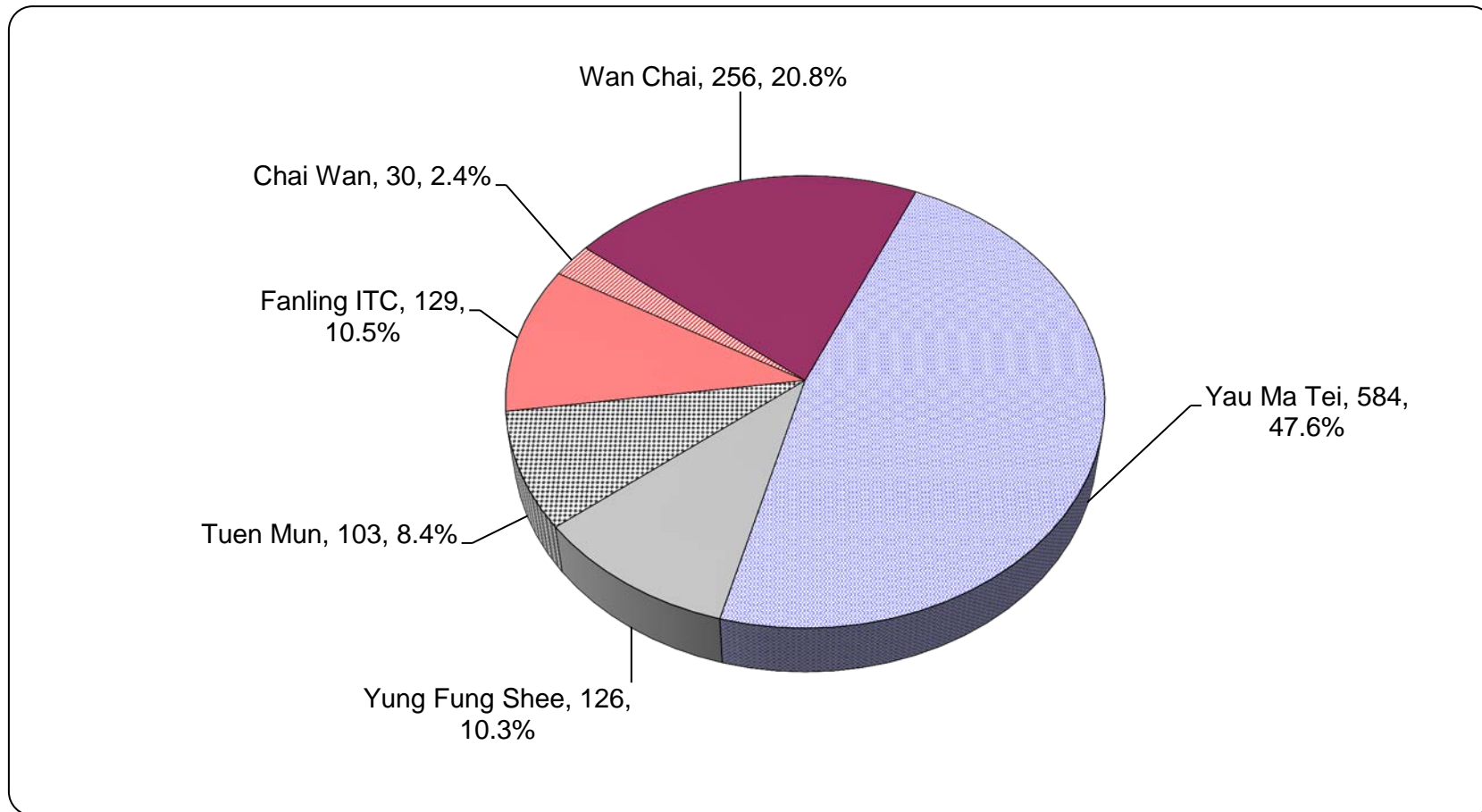
12. Clinic distribution

Chart 12.1 Number of newly report STI in Q3 2016 by clinic (male clients)



Format : [Clinic ; Number ; %]

Chart 12.2 Number of newly report STI in Q3 2016 by clinic (female clients)



Format : [Clinic ; Number ; %]