



The Hong Kong STD/AIDS update is a composite report on HIV/AIDS reporting and STI caseload statistics published 3 monthly. The current issue has the updated information up to September 2018.

SPP Surveillance Team:

Dr. Michelle CHAK

Ms. Rita LUI

Correspondence to:

Special Preventive Programme,

Centre for Health Protection, Department of Health

c/o Red Ribbon Centre, 2/F Wang Tau Hom Jockey Club Clinic,

200 Junction Road East, Kowloon, Hong Kong

Tel: (852) 3143 7200 Fax: (852) 2338 0534

E-mail: aids@dh.gov.hk

List of Tables / Figures

LIST OF TABLES / FIGURES	92
1. NUMBER OF HIV/AIDS REPORTED	94
TABLE 1.1 SUMMARY TABLE ON THE REPORTED NUMBER OF HIV/AIDS	94
CHART 1.1 NUMBER OF HIV/AIDS REPORTED	97
2. GENDER DISTRIBUTION OF REPORTED HIV/AIDS	98
TABLE 2.1 GENDER DISTRIBUTION OF REPORTED HIV	98
CHART 2.1 GENDER DISTRIBUTION OF REPORTED HIV BY QUARTER	99
CHART 2.2 GENDER DISTRIBUTION OF REPORTED HIV BY YEAR	100
TABLE 2.2 GENDER DISTRIBUTION OF REPORTED AIDS	101
CHART 2.3 GENDER DISTRIBUTION OF REPORTED AIDS BY QUARTER	102
CHART 2.4 GENDER DISTRIBUTION OF REPORTED AIDS BY YEAR	103
3. ETHNICITY OF REPORTED HIV/AIDS	104
TABLE 3.1 DISTRIBUTION OF ETHNICITY OF REPORTED HIV	104
CHART 3.1 DISTRIBUTION OF ETHNICITY OF REPORTED HIV	105
TABLE 3.2 DISTRIBUTION OF ETHNICITY OF REPORTED AIDS	106
CHART 3.2 DISTRIBUTION OF ETHNICITY OF REPORTED AIDS	107
4. AGE DISTRIBUTION OF REPORTED HIV/AIDS	108
TABLE 4.1 AGE DISTRIBUTION OF REPORTED HIV	108
CHART 4.1 AGE DISTRIBUTION OF REPORTED HIV	109
CHART 4.2 AGE GROUP & GENDER OF TOTAL REPORTED HIV	110
TABLE 4.2 AGE DISTRIBUTION OF REPORTED AIDS	111
CHART 4.3 AGE DISTRIBUTION OF REPORTED AIDS	112
CHART 4.4 AGE GROUP & GENDER OF TOTAL REPORTED AIDS	113
5. EXPOSURE CATEGORIES OF REPORTED HIV/AIDS	114
TABLE 5.1 EXPOSURE CATEGORIES OF REPORTED HIV	114
CHART 5.1 EXPOSURE CATEGORIES OF REPORTED HIV	115
TABLE 5.2 EXPOSURE CATEGORIES OF REPORTED AIDS	116
CHART 5.2 EXPOSURE CATEGORIES OF REPORTED AIDS	117
6. RATIO (HETEROSEXUAL : HOMOSEXUAL / BISEXUAL) OF SEXUALLY ACQUIRED HIV INFECTION IN MEN	118

TABLE 6.1 RATIO OF SEXUALLY ACQUIRED INFECTION IN MEN WITH REPORTED HIV/AIDS (HETEROSEXUAL : HOMO / BISEXUAL) BY QUARTER	118
TABLE 6.2 RATIO OF SEXUALLY ACQUIRED INFECTION IN MEN WITH REPORTED HIV/AIDS (HETEROSEXUAL : HOMO / BISEXUAL) BY YEAR	119
7. INJECTING DRUG USERS IN REPORTED HIV/AIDS	120
TABLE 7.1 INJECTING DRUG USERS IN REPORTED HIV/AIDS	120
TABLE 7.2 NUMBER OF INJECTING DRUG USER IN REPORTED HIV/AIDS BY YEAR	121
8. SOURCE OF REFERRAL OF REPORTED HIV/AIDS	122
TABLE 8.1 SOURCE OF REFERRAL OF REPORTED HIV	122
CHART 8.1 SOURCE OF REFERRAL OF REPORTED HIV	123
TABLE 8.2 SOURCE OF REFERRAL OF REPORTED AIDS	124
CHART 8.2 SOURCE OF REFERRAL OF REPORTED AIDS	125
9. DISTRIBUTION OF AIDS DEFINING ILLNESSES	126
TABLE 9.1 DISTRIBUTION OF AIDS DEFINING ILLNESS OF REPORTED AIDS	126
CHART 9.1 AIDS DEFINING ILLNESS OF TOTAL REPORTED AIDS	127
CHART 9.2 AIDS DEFINING ILLNESS OF REPORTED AIDS BY YEAR	128
10. REPORTED SEXUALLY TRANSMITTED INFECTIONS (STIS) DIAGNOSED IN SOCIAL HYGIENE SERVICE	129
TABLE 10.1 SUMMARY TABLE ON THE REPORTED STIS DIAGNOSED IN SOCIAL HYGIENE SERVICE	129
11. GENDER DISTRIBUTION OF REPORTED STIS	131
TABLE 11.1 GENDER DISTRIBUTION OF SELECTED STI REPORTED BY SOCIAL HYGIENE SERVICE	131
TABLE 11.2 GENDER DISTRIBUTION OF REPORTED STI BY CLINIC	133
12. CLINIC DISTRIBUTION	134
CHART 12.1 NUMBER OF NEWLY REPORT STI IN Q3 2018 BY CLINIC (MALE CLIENTS)	134
CHART 12.2 NUMBER OF NEWLY REPORT STI IN Q3 2018 BY CLINIC (FEMALE CLIENTS)	135

1. Number of HIV/AIDS reported

Table 1.1 Summary table on the reported number of HIV/AIDS

	This quarter (Jul - Sep 2018)		Last quarter (Apr - Jun 2018)		Same quarter last year (Jul - Sep 2017)		Cumulative (1984 –Sep 2018)	
	HIV	AIDS	HIV	AIDS	HIV	AIDS	HIV	AIDS
Sex								
Male	133	25	127	30	129	12	7,788	1,627
Female	23	9	27	10	24	0	1,755	332
Ethnicity/race								
Chinese	110	23	109	30	120	9	6,602	1,504
Non-Chinese	37	11	35	10	25	3	2,700	455
<i>Asian</i>	20	8	16	10	14	3	1,355	308
<i>White</i>	7	1	6	0	3	0	572	98
<i>Black</i>	2	1	6	0	5	0	234	41
<i>Others</i>	8	1	7	0	3	0	539	8
Unknown	9	0	10	0	8	0	241	0

(to be cont'd)

Table 1.1 (cont'd)

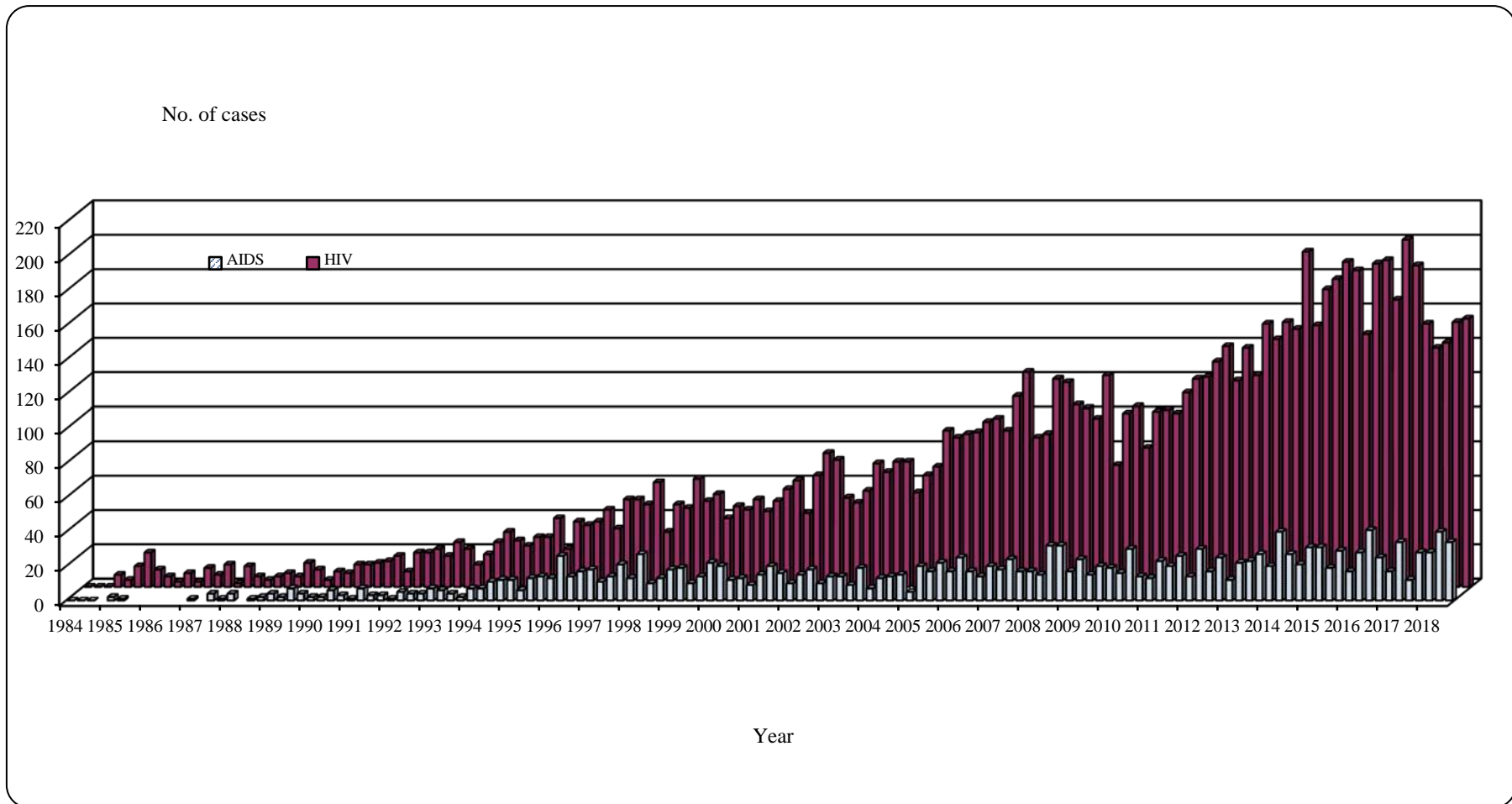
	This quarter (Jul - Sep 2018)		Last quarter (Apr - Jun 2018)		Same quarter last year (Jul - Sep 2017)		Cumulative (1984 –Sep 2018)	
	HIV	AIDS	HIV	AIDS	HIV	AIDS	HIV	AIDS
Age at diagnosis								
Adult	156	34	154	40	153	12	9,490	1,945
Child (age 13 or less)	0	0	0	0	0	0	53	14
Exposure category								
Heterosexual	29	15	44	17	30	2	3,182	1,033
Homosexual	66	12	73	18	83	6	3,813	576
Bisexual	17	6	15	4	18	2	506	114
Injecting drug use	1	0	0	0	1	0	359	66
Blood / blood product infusion	0	0	0	0	0	0	85	25
Perinatal	0	0	0	0	1	0	33	10
Undetermined	43	1	22	1	20	2	1,565	135

(to be cont'd)

Table 1.1 (Cont'd)

	This quarter (Jul - Sep 2018)		Last quarter (Apr - Jun 2018)		Same quarter last year (Jul - Sep 2017)		Cumulative (1984 –Sep 2018)	
	HIV	AIDS	HIV	AIDS	HIV	AIDS	HIV	AIDS
Source of referral								
Public hospitals / clinics / laboratories	72	30	65	31	47	11	3,858	1,500
Private hospitals / clinics / laboratories	27	1	19	7	19	0	1,907	254
Social Hygiene Clinics	21	1	28	1	33	0	1,362	71
DH AIDS Unit	20	1	18	1	33	1	1,228	105
AIDS service organisations (NGOs)	14	1	21	0	21	0	892	14
Hong Kong Red Cross Blood Transfusion Service	1	0	2	0	0	0	165	9
Drug rehabilitation services	1	0	1	0	0	0	131	6
Total	156	34	154	40	153	12	9,543	1,959

Chart 1.1 Number of HIV/AIDS reported



2. Gender distribution of reported HIV/AIDS

Table 2.1 Gender distribution of reported HIV

	This quarter (Jul - Sep 2018)	Last quarter (Apr - Jun 2018)	Same quarter last year (Jul - Sep 2017)	Cumulative (1984 –Sep 2018)
Male	133	127	129	7,788
Female	23	27	24	1,755
Total	156	154	153	9,543

Chart 2.1 Gender distribution of reported HIV by quarter

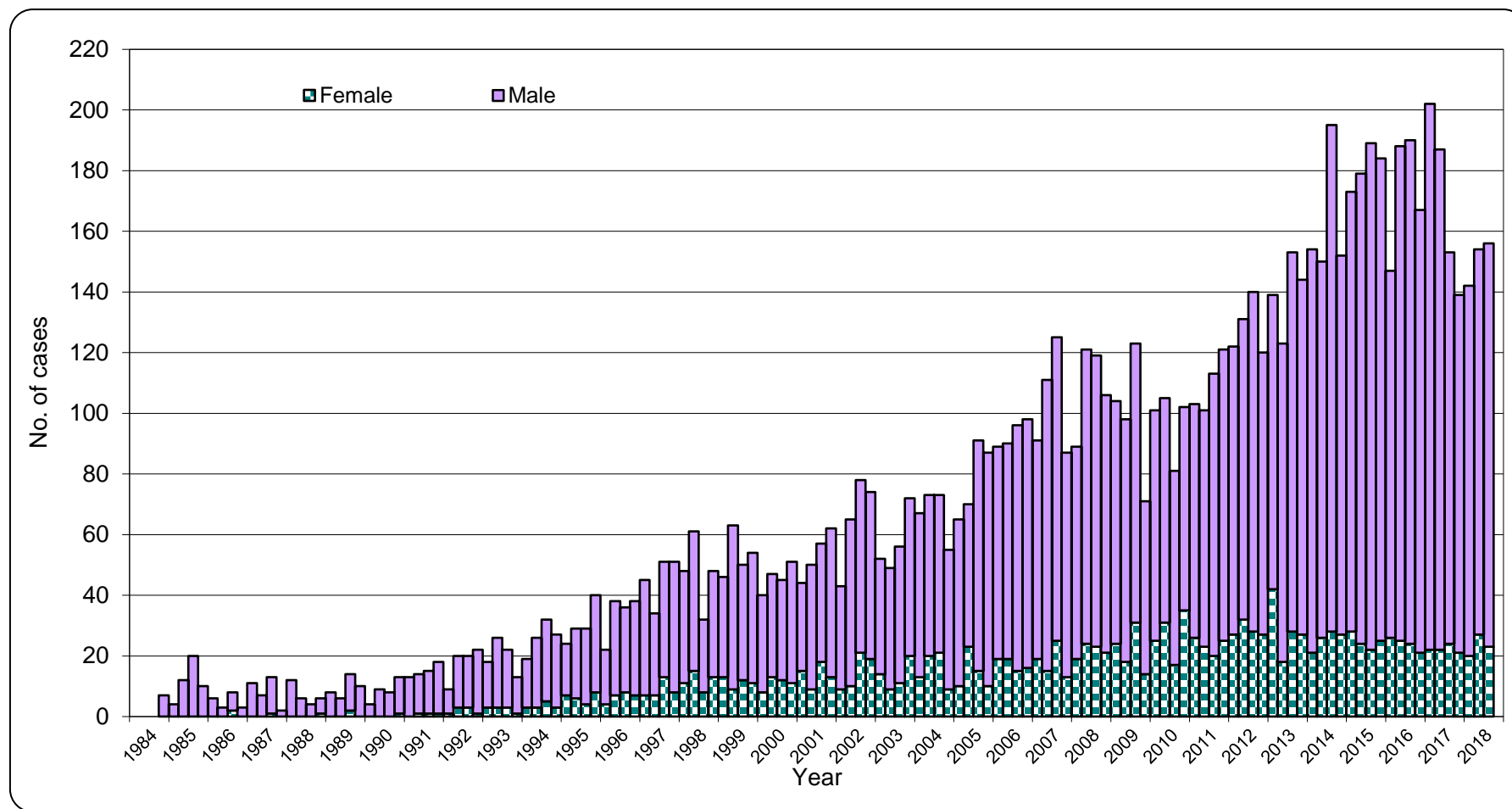


Chart 2.2 Gender distribution of reported HIV by year

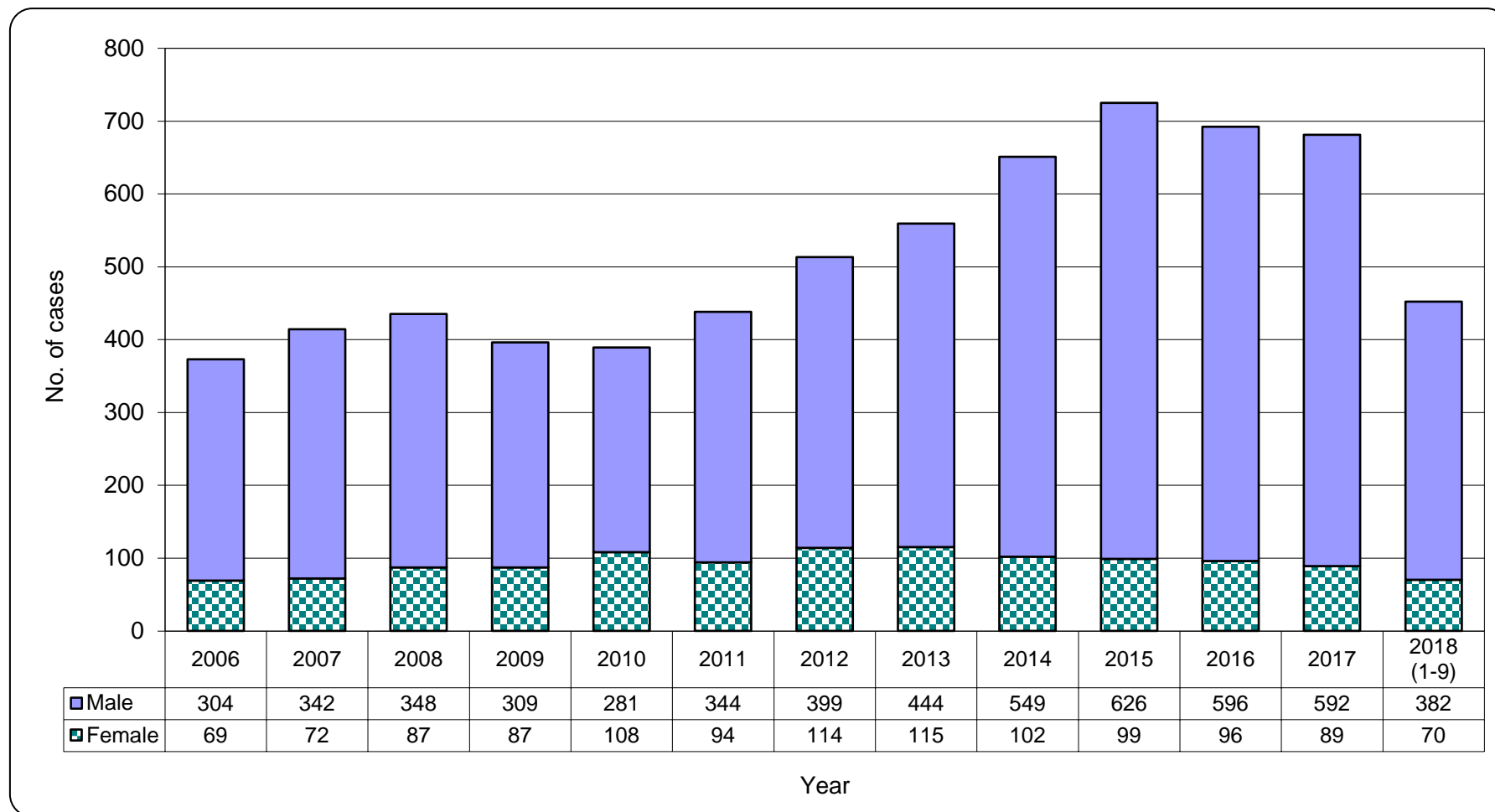


Table 2.2 Gender distribution of reported AIDS

	This quarter (Jul - Sep 2018)	Last quarter (Apr - Jun 2018)	Same quarter last year (Jul - Sep 2017)	Cumulative (1984 –Sep 2018)
Male	25	30	12	1,627
Female	9	10	0	332
Total	34	40	12	1,959

Chart 2.3 Gender distribution of reported AIDS by quarter

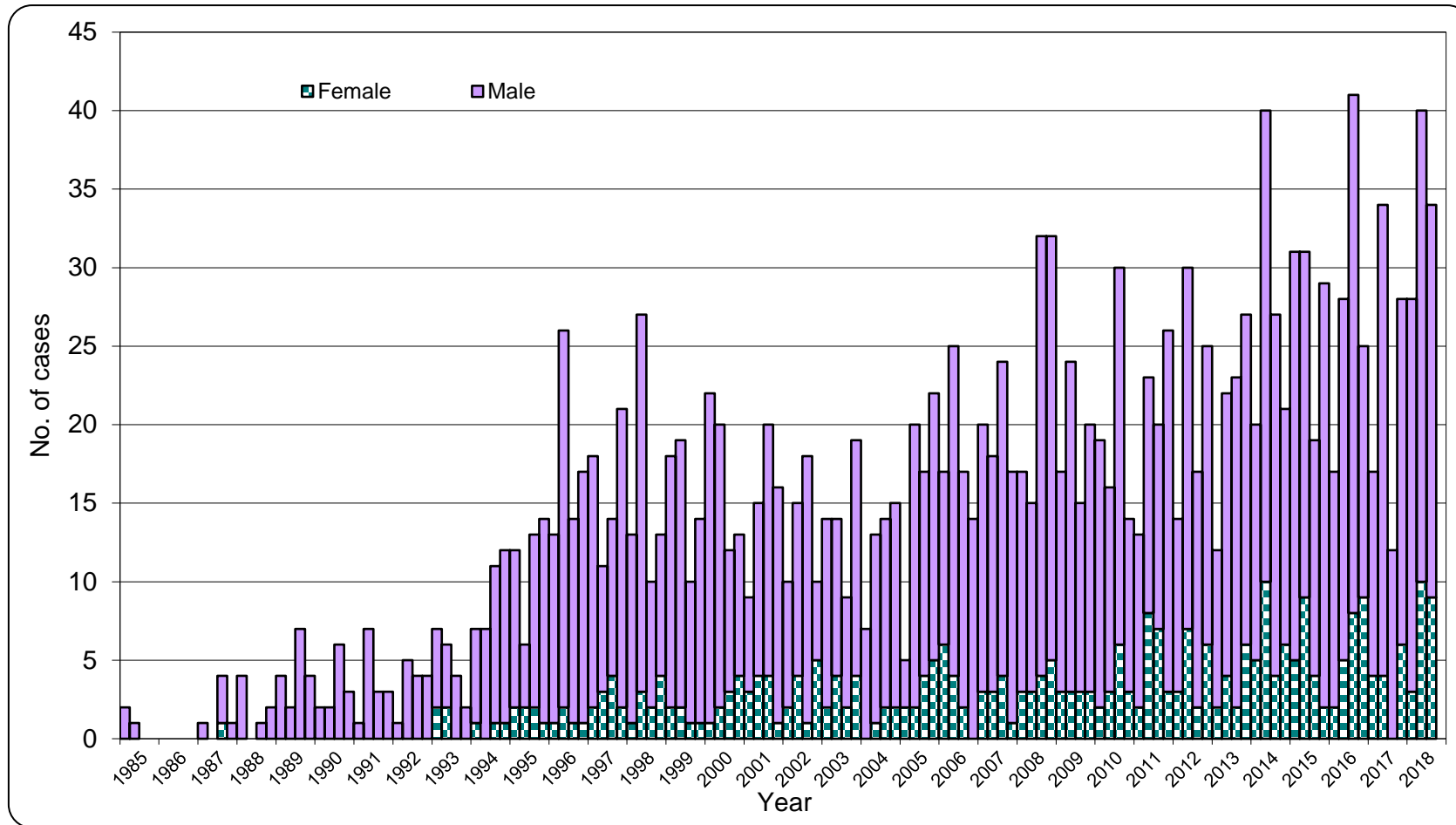
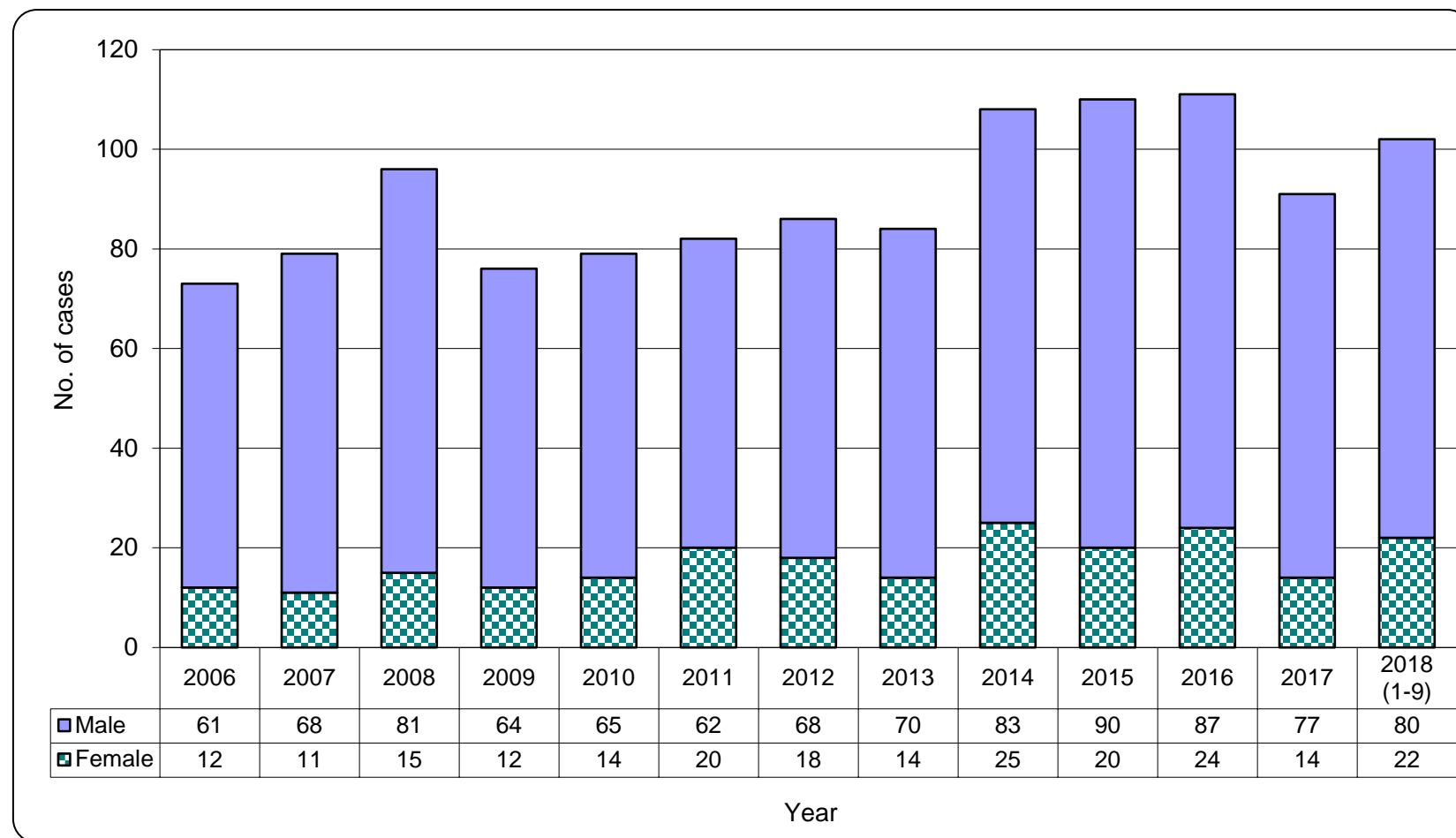


Chart 2.4 Gender distribution of reported AIDS by year



3. Ethnicity of reported HIV/AIDS

Table 3.1 Distribution of ethnicity of reported HIV

	This quarter (Jul - Sep 2018)	Last quarter (Apr - Jun 2018)	Same quarter last year (Jul - Sep 2017)	Cumulative (1984 –Sep 2018)
Chinese	110	109	120	6,602
Non-Chinese	37	35	25	2,700
<i>Asian</i>	20	16	14	1,355
<i>White</i>	7	6	3	572
<i>Black</i>	2	6	5	234
<i>Others</i>	8	7	3	539
Unknown	9	10	8	241
Total	156	154	153	9,543

Chart 3.1 Distribution of ethnicity of reported HIV

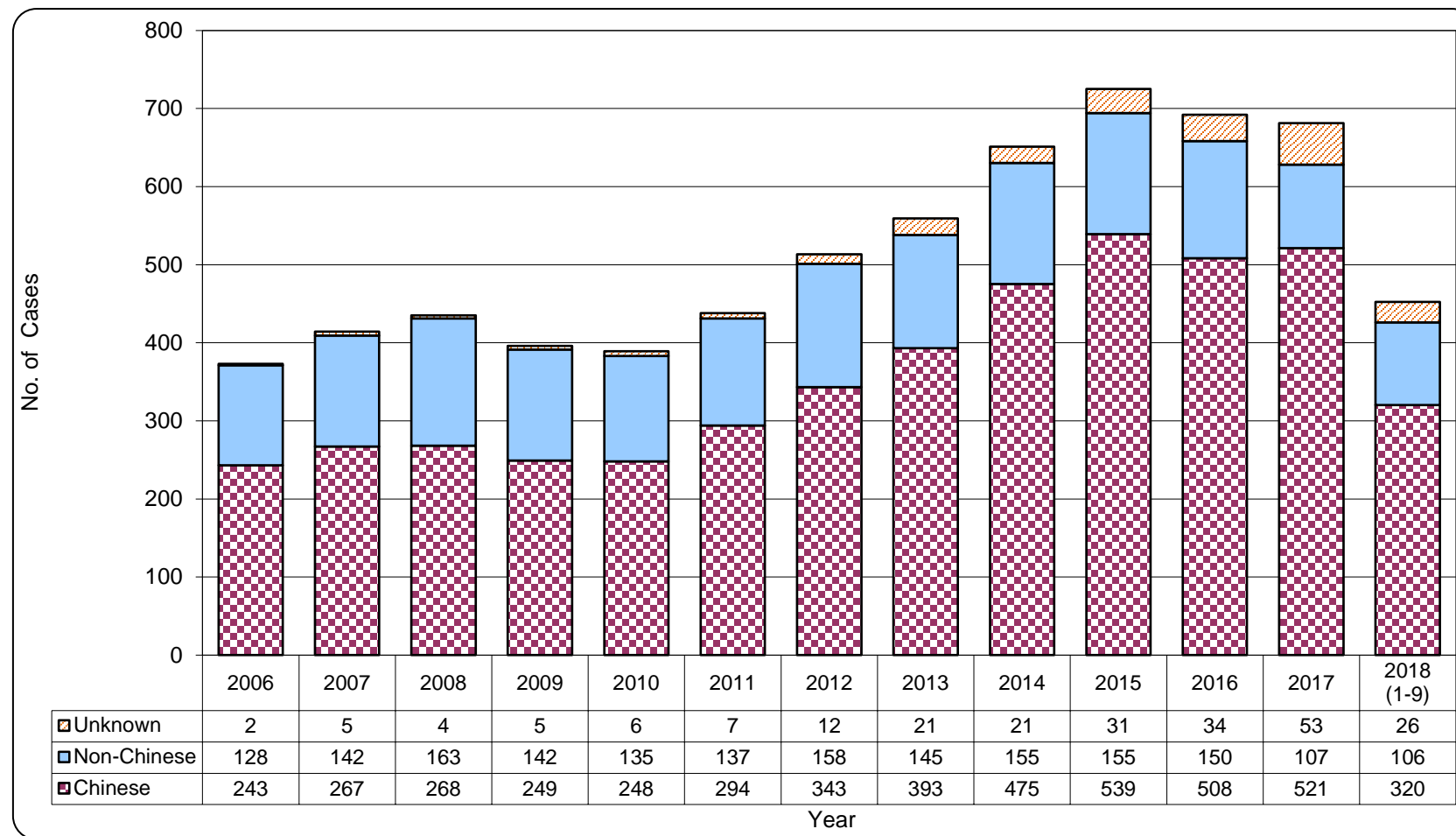
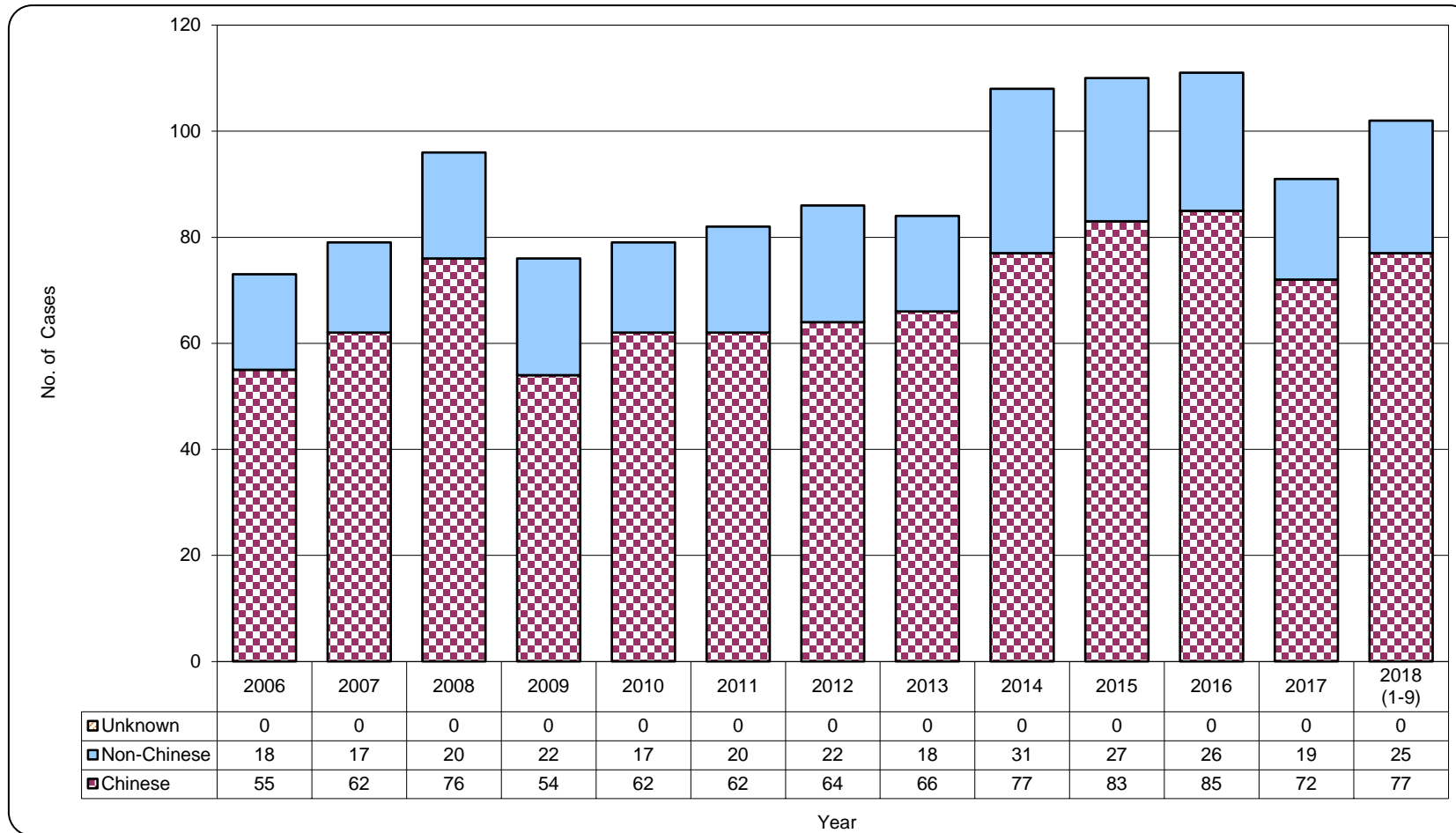


Table 3.2 Distribution of ethnicity of reported AIDS

	This quarter (Jul - Sep 2018)	Last quarter (Apr - Jun 2018)	Same quarter last year (Jul - Sep 2017)	Cumulative (1984 –Sep 2018)
Chinese	23	30	9	1,504
Non-Chinese	11	10	3	455
<i>Asian</i>	8	10	3	308
<i>White</i>	1	0	0	98
<i>Black</i>	1	0	0	41
<i>Others</i>	1	0	0	8
Unknown	0	0	0	0
Total	34	40	12	1,959

Chart 3.2 Distribution of ethnicity of reported AIDS



4. Age distribution of reported HIV/AIDS

Table 4.1 Age distribution of reported HIV

	This quarter (Jul - Sep 2018)	Last quarter (Apr - Jun 2018)	Same quarter last year (Jul - Sep 2017)	Cumulative (1984 –Sep 2018)
Adult	156	154	153	9,490
Child (age 13 or less)	0	0	0	53
Total	156	154	153	9,543

Chart 4.1 Age distribution of reported HIV

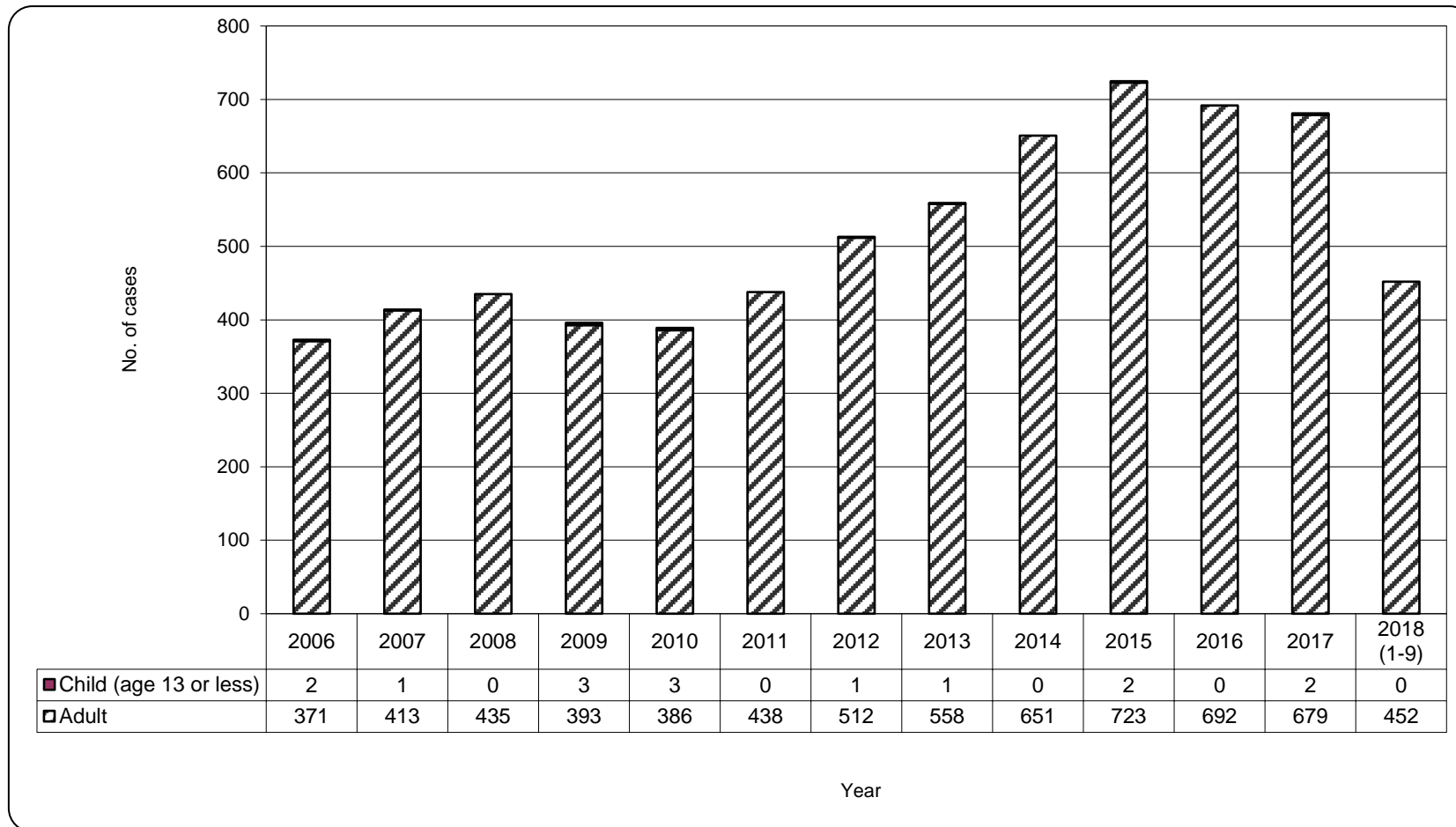


Chart 4.2 Age group & gender of total reported HIV

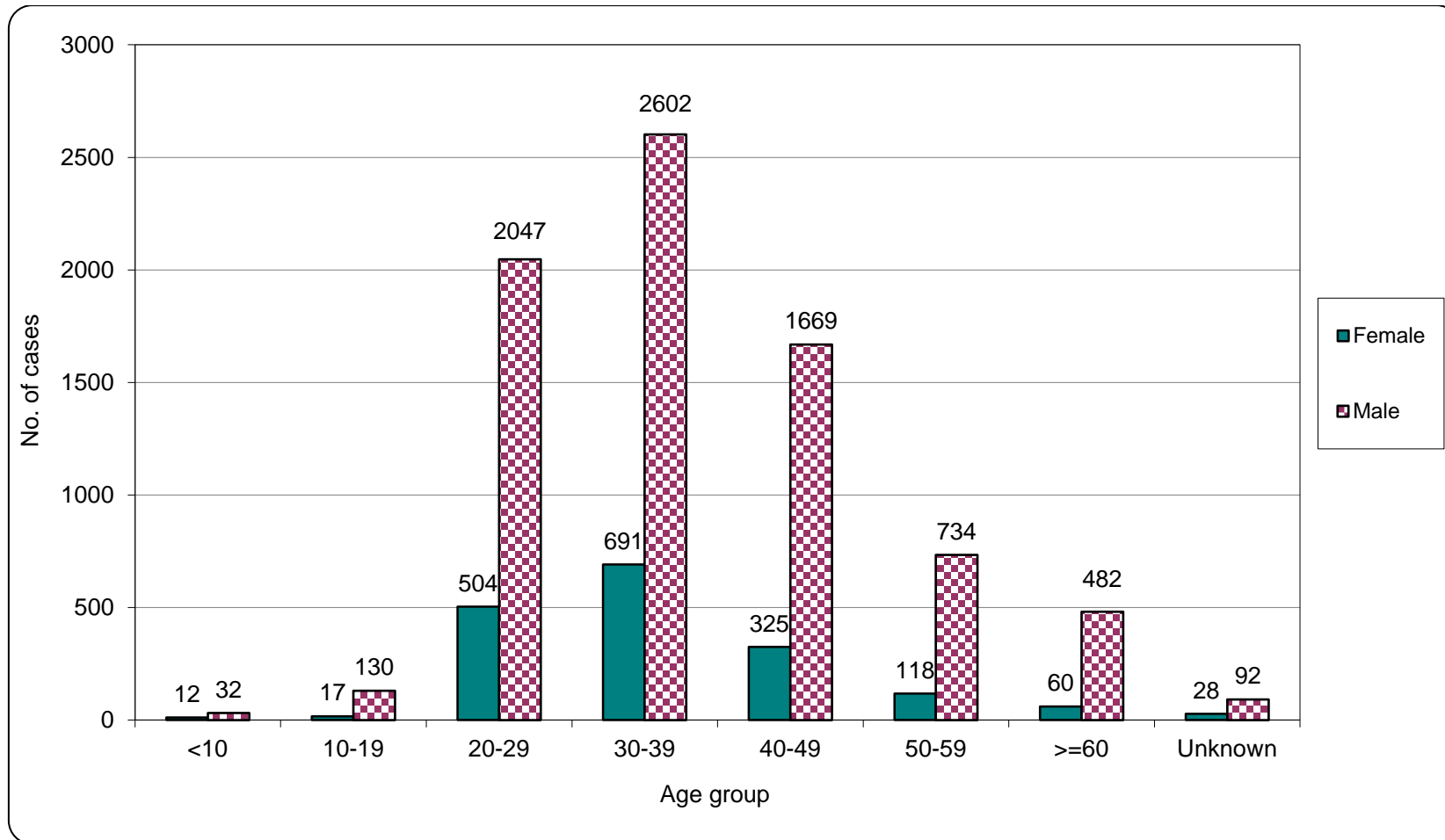


Table 4.2 Age distribution of reported AIDS

	This quarter (Jul - Sep 2018)	Last quarter (Apr - Jun 2018)	Same quarter last year (Jul - Sep 2017)	Cumulative (1984 –Sep 2018)
Adult	34	40	12	1,945
Child (age 13 or less)	0	0	0	14
Total	34	40	12	1,959

Chart 4.3 Age distribution of reported AIDS

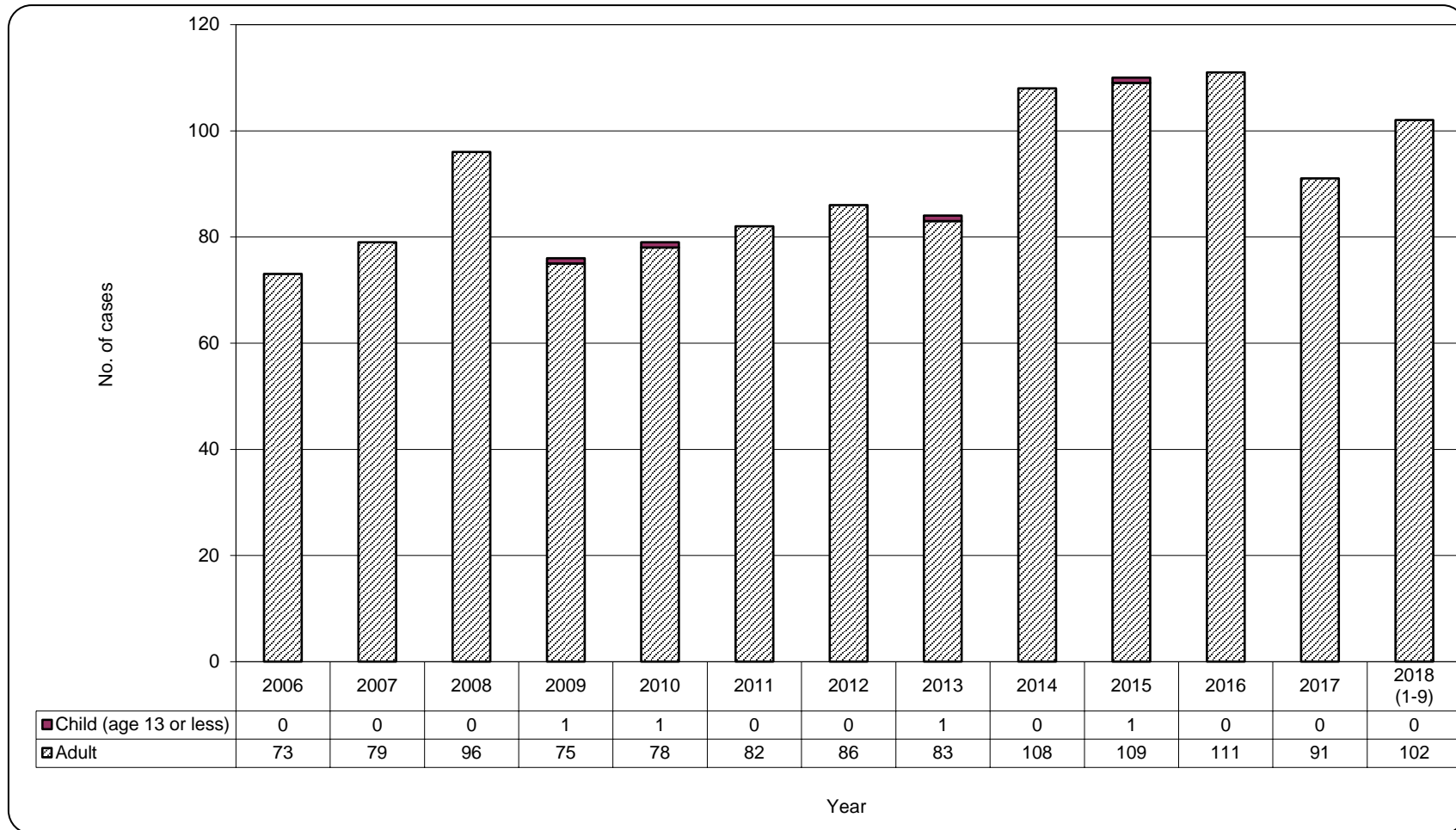
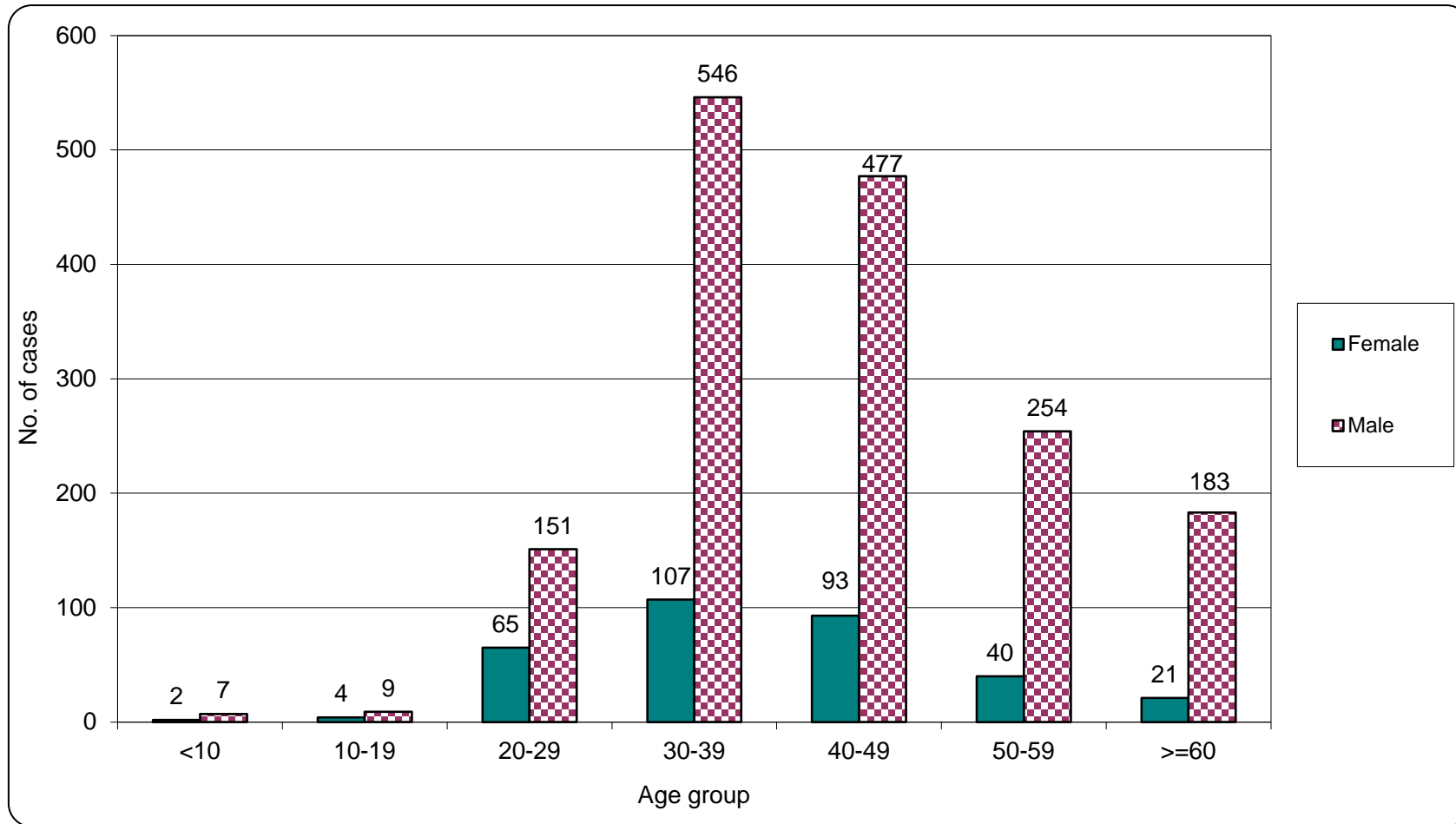


Chart 4.4 Age group & gender of total reported AIDS



5. Exposure categories of reported HIV/AIDS

Table 5.1 Exposure categories of reported HIV

	This quarter (Jul - Sep 2018)	Last quarter (Apr - Jun 2018)	Same quarter last year (Jul - Sep 2017)	Cumulative (1984 –Sep 2018)
Heterosexual	29	44	30	3,182
Homosexual	66	73	83	3,813
Bisexual	17	15	18	506
Injecting drug use	1	0	1	359
Blood / blood product infusion	0	0	0	85
Perinatal	0	0	1	33
Undetermined	43	22	20	1,565
Total	156	154	153	9,543

Chart 5.1 Exposure categories of reported HIV

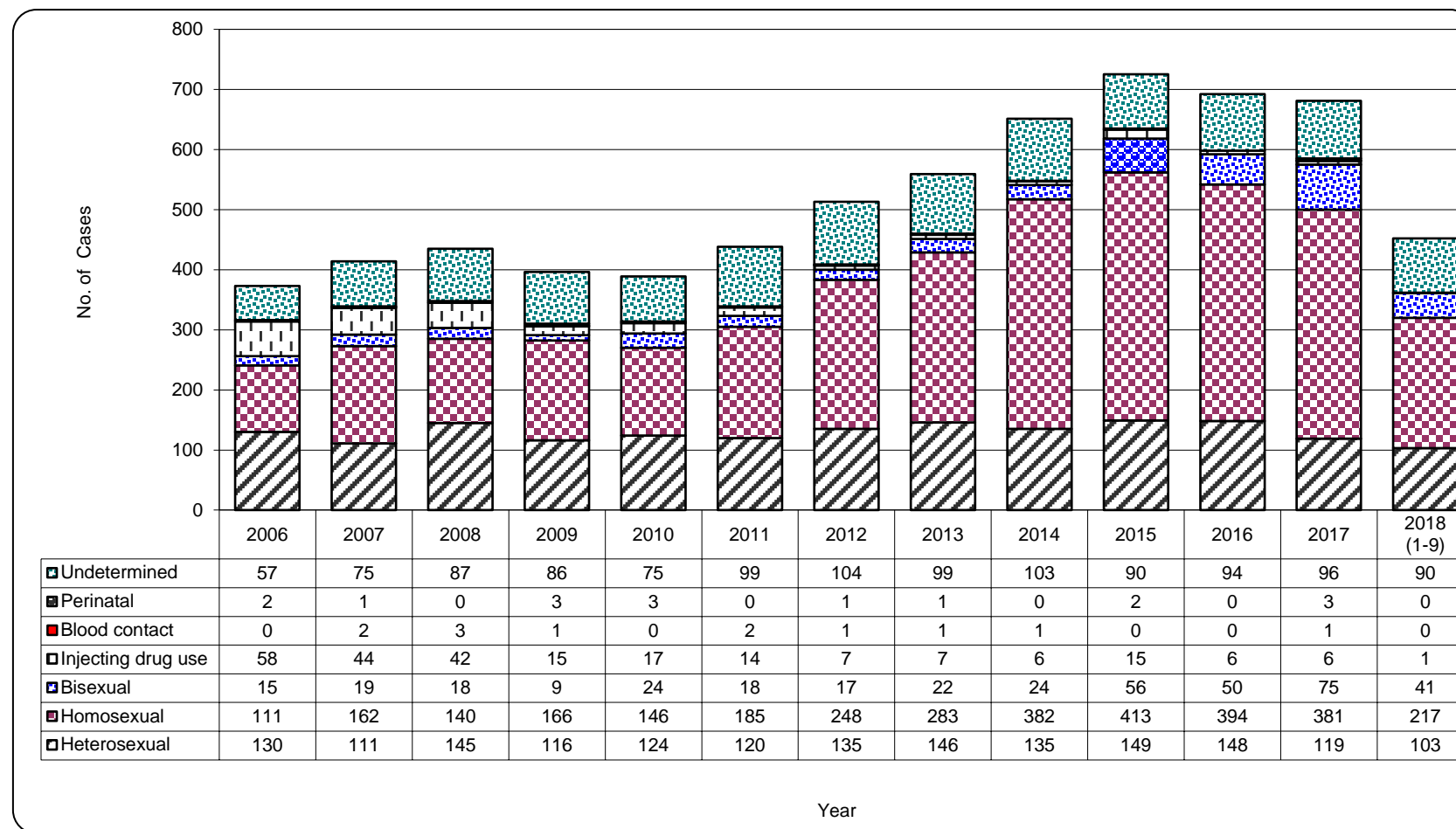
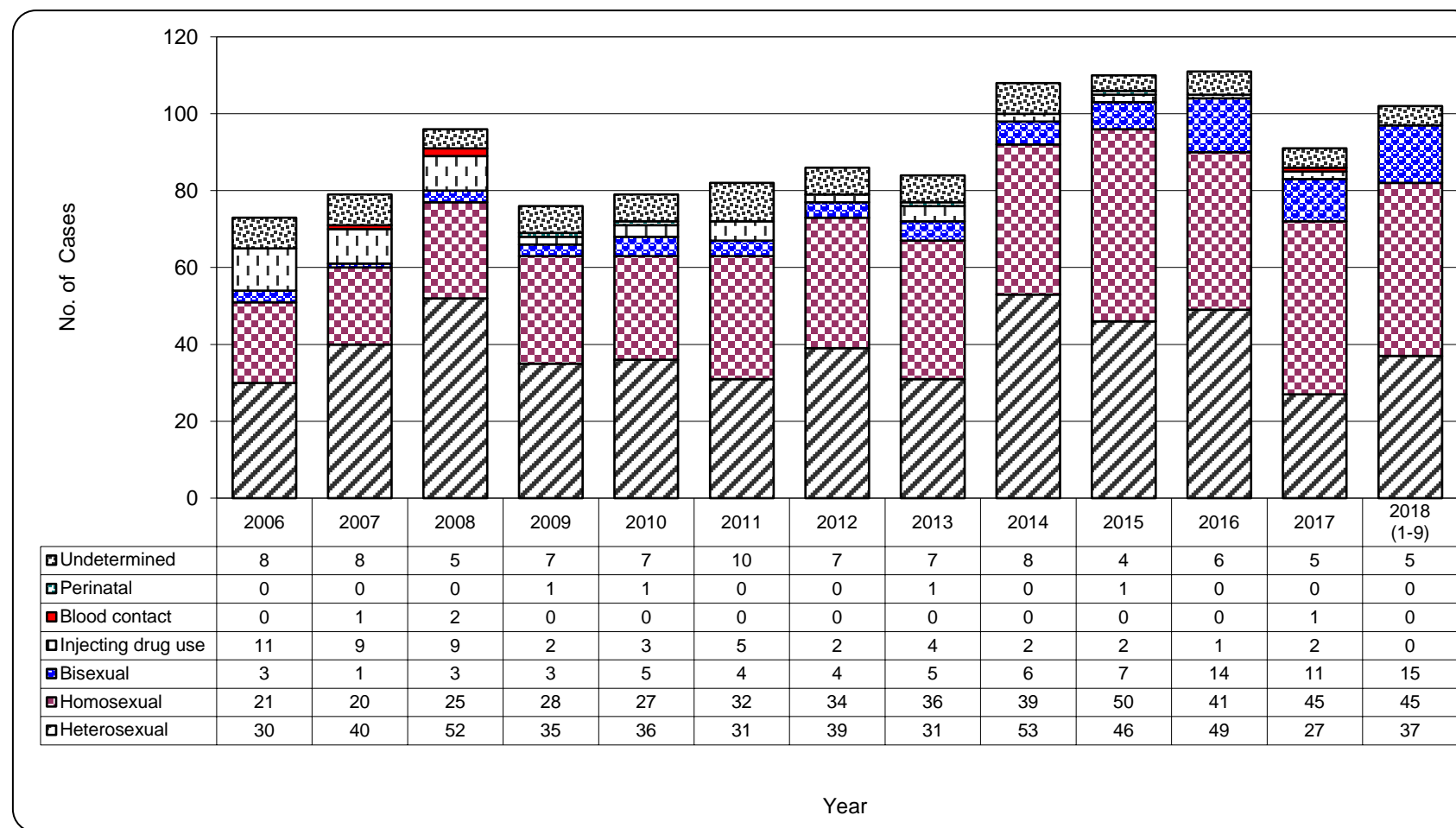


Table 5.2 Exposure categories of reported AIDS

	This quarter (Jul - Sep 2018)	Last quarter (Apr - Jun 2018)	Same quarter last year (Jul - Sep 2017)	Cumulative (1984 –Sep 2018)
Heterosexual	15	17	2	1,033
Homosexual	12	18	6	576
Bisexual	6	4	2	114
Injecting drug use	0	0	0	66
Blood / blood product infusion	0	0	0	25
Perinatal	0	0	0	10
Undetermined	1	1	2	135
Total	34	40	12	1,959

Chart 5.2 Exposure categories of reported AIDS



6. Ratio (heterosexual : homosexual / bisexual) of sexually acquired HIV infection in men

Table 6.1 Ratio of sexually acquired infection in men with reported HIV/AIDS (heterosexual : homo / bisexual) by quarter

	This quarter (Jul - Sep 2018)	Last quarter (Apr - Jun 2018)	Same quarter last year (Jul - Sep 2017)	Cumulative (1984 –Sep 2018)
HIV	0.2 : 1	0.2 : 1	0.1 : 1	0.5 : 1
AIDS	0.4 : 1	0.3 : 1	0.3 : 1	1.1 : 1

Table 6.2 Ratio of sexually acquired infection in men with reported HIV/AIDS (heterosexual : homo / bisexual) by year

	2007	2008	2009	2010	2011	2012	2013	2014	2015	2016	2017	2018 (1-9)	1984 – Sep 2018
HIV	0.4 : 1	0.6 : 1	0.4 : 1	0.4 : 1	0.3 : 1	0.3 : 1	0.2 : 1	0.2 : 1	0.2 : 1	0.2 : 1	0.1 : 1	0.2 : 1	0.5 : 1
AIDS	1.5 : 1	1.4 : 1	0.8 : 1	0.8 : 1	0.4 : 1	0.6 : 1	0.4 : 1	0.7 : 1	0.5 : 1	0.5 : 1	0.3 : 1	0.3 : 1	1.1 : 1

7. Injecting drug users in reported HIV/AIDS

Table 7.1 Injecting drug users in reported HIV/AIDS

	This quarter (Jul - Sep 2018)	Last quarter (Apr - Jun 2018)	Same quarter last year (Jul - Sep 2017)	Cumulative (1984 –Sep 2018)
HIV (% of reported HIV)	1 0.6%	0 0.0%	1 0.7%	359 3.8%
AIDS (% of reported AIDS)	0 0.0%	0 0.0%	0 0.0%	66 3.4%

Table 7.2 Number of injecting drug user in reported HIV/AIDS by year

	2007	2008	2009	2010	2011	2012	2013	2014	2015	2016	2017	2018 (1-9)	1984 – Sep 2018
HIV (% of reported HIV)	44 (10.6%)	42 (9.7%)	15 (3.8%)	17 (4.4%)	14 (3.2%)	7 (1.4%)	7 (1.3%)	6 (0.9%)	15 (2.1%)	6 (0.9%)	6 (0.9%)	1 (0.2%)	359 3.8%
AIDS (% of reported AIDS)	9 (11.4%)	9 (9.4%)	2 (2.6%)	3 (3.8%)	5 (6.1%)	2 (2.3%)	4 (4.8%)	2 (1.9%)	2 (1.8%)	1 (0.9%)	2 (2.2%)	0 (0.0%)	66 3.4%

8. Source of referral of reported HIV/AIDS

Table 8.1 Source of referral of reported HIV

	This quarter (Jul - Sep 2018)	Last quarter (Apr - Jun 2018)	Same quarter last year (Jul - Sep 2017)	Cumulative (1984 –Sep 2018)
Public hospitals / clinics / laboratories	72	65	47	3,858
Private hospitals / clinics / laboratories	27	19	19	1,907
Social Hygiene Clinics	21	28	33	1,362
DH AIDS unit	20	18	33	1,228
AIDS service organisations (NGOs)	14	21	21	892
Hong Kong Red Cross Blood Transfusion Service	1	2	0	165
Drug rehabilitation services	1	1	0	131
Total	156	154	153	9,543

Chart 8.1 Source of referral of reported HIV

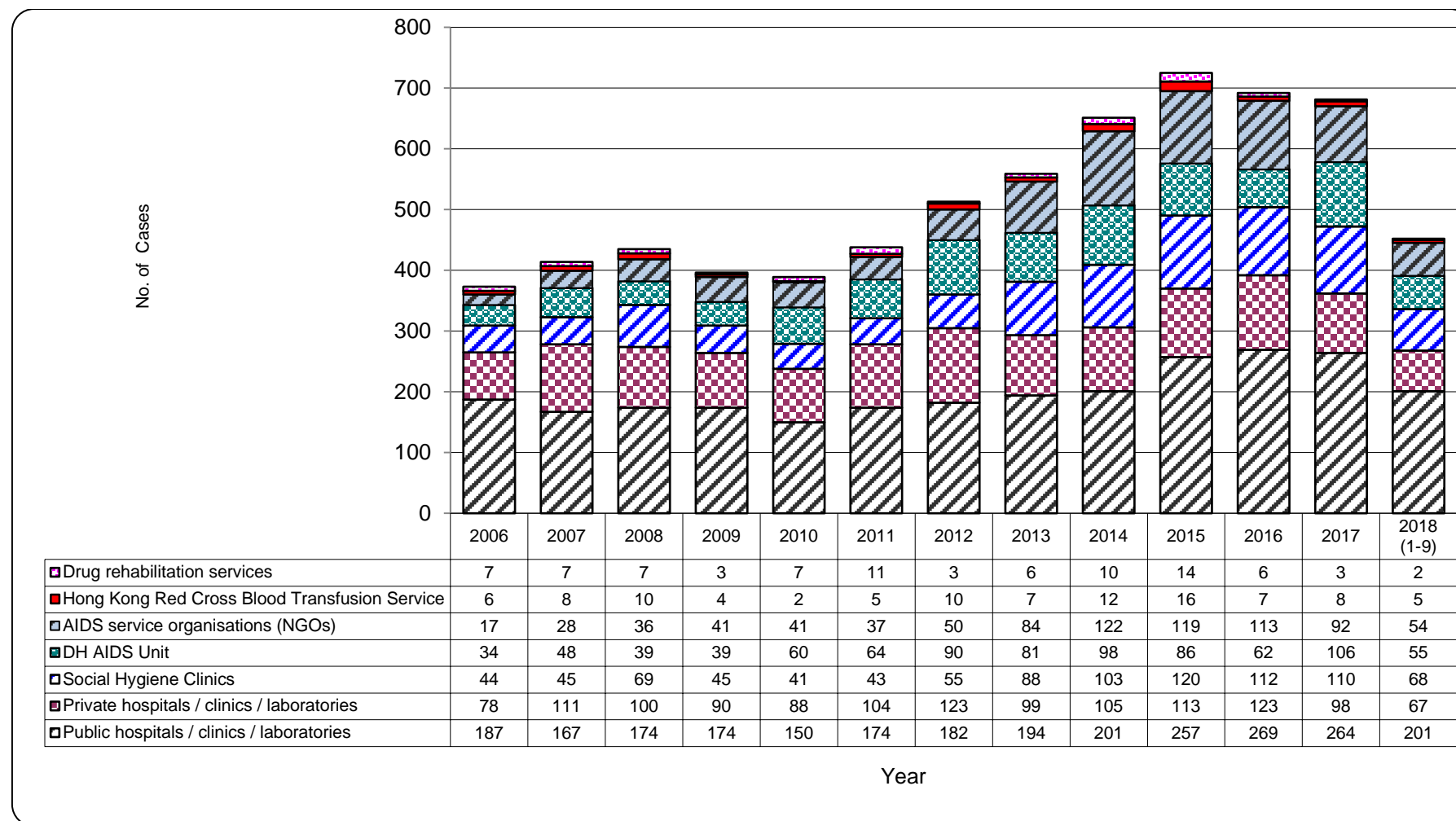
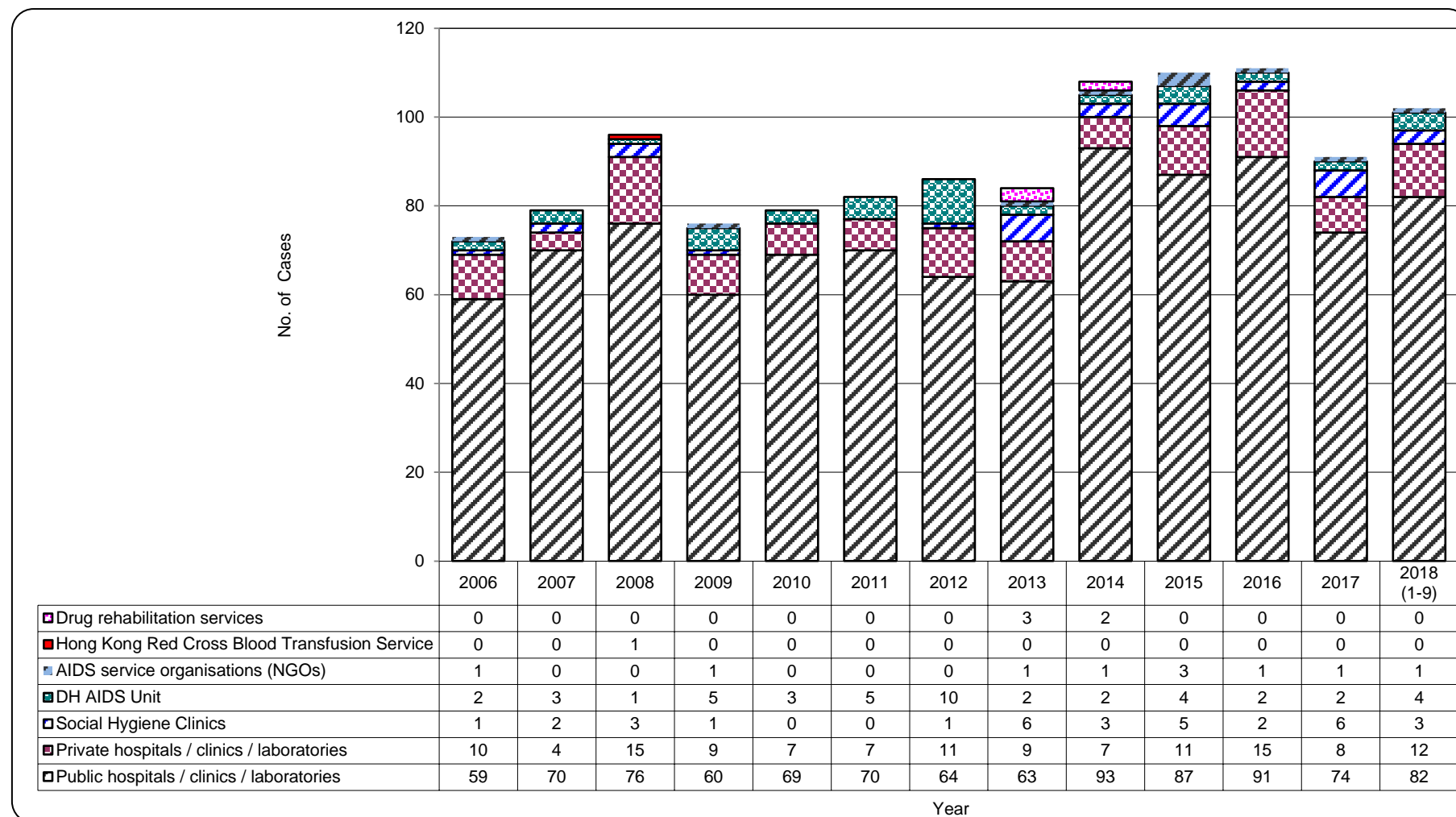


Table 8.2 Source of referral of reported AIDS

	This quarter (Jul - Sep 2018)	Last quarter (Apr - Jun 2018)	Same quarter last year (Jul - Sep 2017)	Cumulative (1984 –Sep 2018)
Public hospitals / clinics / laboratories	30	31	11	1,500
Private hospitals / clinics / laboratories	1	7	0	254
Social Hygiene Clinics	1	1	0	71
DH AIDS unit	1	1	1	105
AIDS service organisations (NGOs)	1	0	0	14
Hong Kong Red Cross Blood Transfusion Service	0	0	0	9
Drug rehabilitation services	0	0	0	6
Total	34	40	12	1,959

Chart 8.2 Source of referral of Reported AIDS

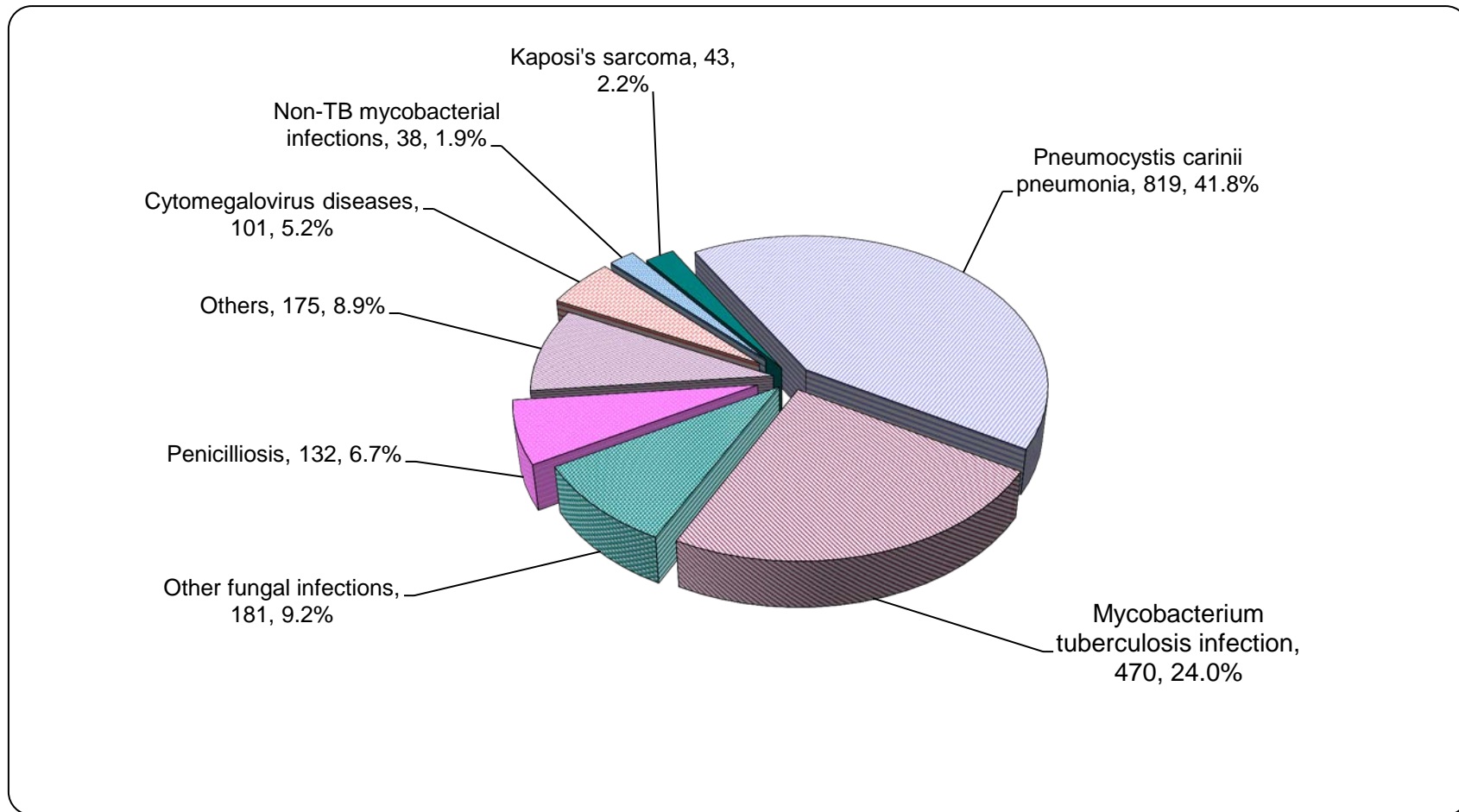


9. Distribution of AIDS defining illnesses

Table 9.1 Distribution of AIDS defining illness of reported AIDS

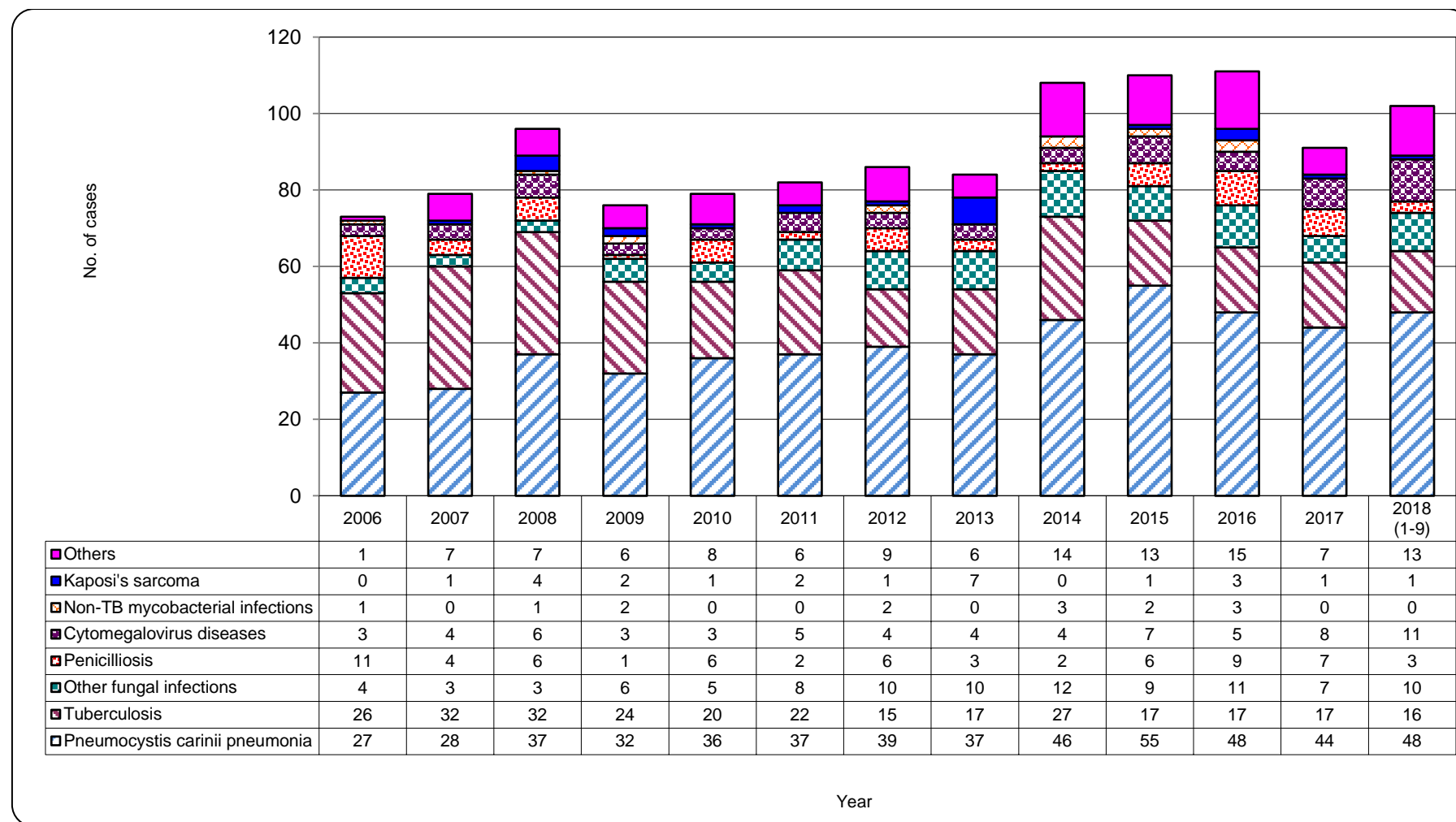
	This quarter (Jul - Sep 2018)	Last quarter (Apr - Jun 2018)	Same quarter last year (Jul - Sep 2017)	Cumulative (1984 –Sep 2018)
<i>Pneumocystis carinii pneumonia</i>	16	21	5	819
<i>Mycobacterium tuberculosis</i>	5	6	4	470
Other fungal infections	2	4	0	181
Penicilliosis	1	2	1	132
Cytomegalovirus diseases	4	4	2	101
Non-TB mycobacterial infections	0	0	0	38
Kaposi's sarcoma	0	0	0	43
Others	6	3	0	175
Total	34	40	12	1,959

Chart 9.1 AIDS defining illness of total reported AIDS



Format: [ADI; Number; %]

Chart 9.2 AIDS defining illness of reported AIDS by year



10. Reported sexually transmitted infections (STIs) diagnosed in Social Hygiene Service

Table 10.1 Summary table on the reported STIs diagnosed in Social Hygiene Service

	This quarter (Jul - Sep 2018)	Last quarter (Apr - Jun 2018)	Same quarter last year (Jul - Sep 2017)	In year 2017
Syphilis				
<i>Primary</i>	15	12	19	69
<i>Secondary</i>	57	54	41	170
<i>Early latent</i>	79	63	45	178
<i>Late latent</i>	157	142	191	690
<i>Late (cardiovascular / neuro /ocular)</i>	2	2	2	6
<i>Congenital (early)</i>	0	0	0	0
<i>Congenital (late)</i>	0	0	2	3
Syphilis total	310	273	300	1,116

(to be cont'd)

Table 10.1 (Cont'd)

	This quarter (Jul - Sep 2018)	Last quarter (Apr - Jun 2018)	Same quarter last year (Jul - Sep 2017)	In year 2017
Gonorrhoea	363	396	407	1,593
Non-gonococcal urethritis (Male)	855	832	875	3,466
Non-specific genital infection (Female)	516	524	649	2,374
Genital wart	429	438	565	2,007
<i>Herpes genitalis</i>	175	160	208	751
Pediculosis pubis	10	10	5	15
Trichomonas	73	67	80	326
Genital ulcer	9	4	6	13
Chancroid / <i>Lymphogranuloma venereum</i>	0	0	0	0
Others	328	341	372	1,272
Total	3,068	3,045	3,467	12,933

11. Gender distribution of reported STIs

Table 11.1 Gender distribution of selected STI reported by Social Hygiene Service

	This quarter (Jul - Sep 2018)	Last quarter (Apr - Jun 2018)	Same quarter last year (Jul - Sep 2017)	In year 2017
Primary Syphilis				
Male (M)	15	12	19	69
Female (F)	0	0	0	0
M:F	N.A.	N.A.	N.A.	N.A.
Gonorrhoea				
Male (M)	321	352	359	1,389
Female (F)	42	44	48	204
M:F	7.6 : 1	8.0 : 1	7.5 : 1	6.8 : 1
NGU / NSGI *				
Male (M)	855	832	875	3,466
Female (F)	516	524	649	2,374
M:F	1.7 : 1	1.6 : 1	1.3 : 1	1.5 : 1

(to be cont'd)

Table 11.1 (Cont'd)

	This quarter (Jul - Sep 2018)	Last quarter (Apr - Jun 2018)	Same quarter last year (Jul - Sep 2017)	In year 2017
Genital wart				
Male (M)	332	329	422	1,486
Female (F)	97	109	143	521
M:F	3.4 : 1	3.0 : 1	3.0 : 1	2.9 : 1
<i>Herpes genitails</i>				
Male (M)	113	101	135	495
Female (F)	62	59	73	256
M:F	1.8 : 1	1.7 : 1	1.8 : 1	1.9 : 1

* NGU = Non-gonococcal urethritis

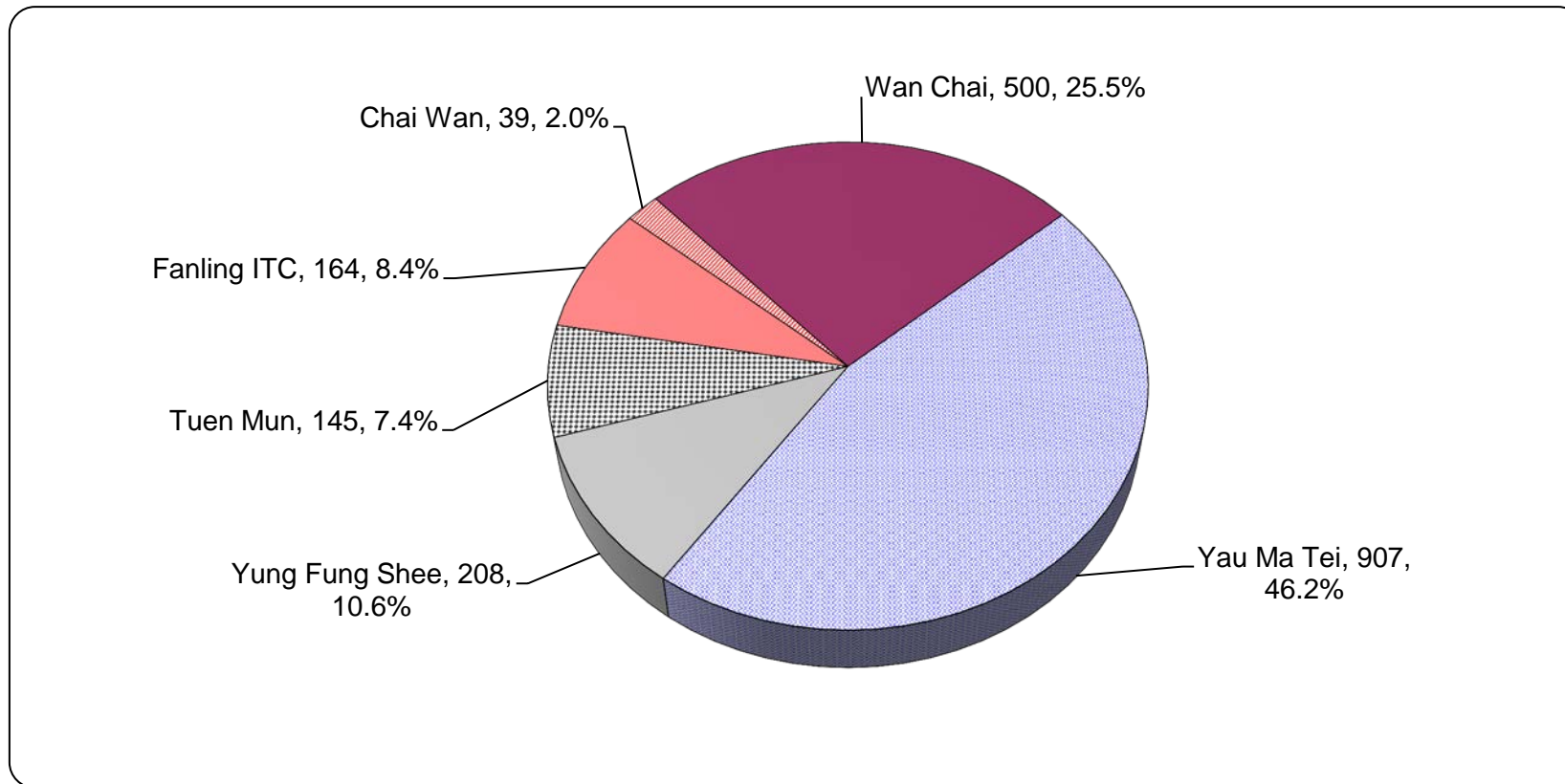
NSGI = Non-specific genital infection

Table 11.2 Gender distribution of reported STI by clinic

	This quarter (Jul - Sep 2018)		Last quarter (Apr - Jun 2018)		Same quarter last year (Jul - Sep 2017)		In year 2017	
	Male	Female	Male	Female	Male	Female	Male	Female
Chai Wan	39	32	47	39	54	32	209	125
Wan Chai	500	232	490	234	441	257	1,754	976
Yau Ma Tei	907	598	918	567	1,001	718	3,659	2,468
Yung Fung Shee	208	73	194	74	241	92	922	388
Tuen Mun	145	85	125	86	172	105	632	388
Fanling ITC	164	85	177	94	216	138	868	544
Total	1,963	1,105	1,951	1,094	2,125	1,342	8,044	4,889

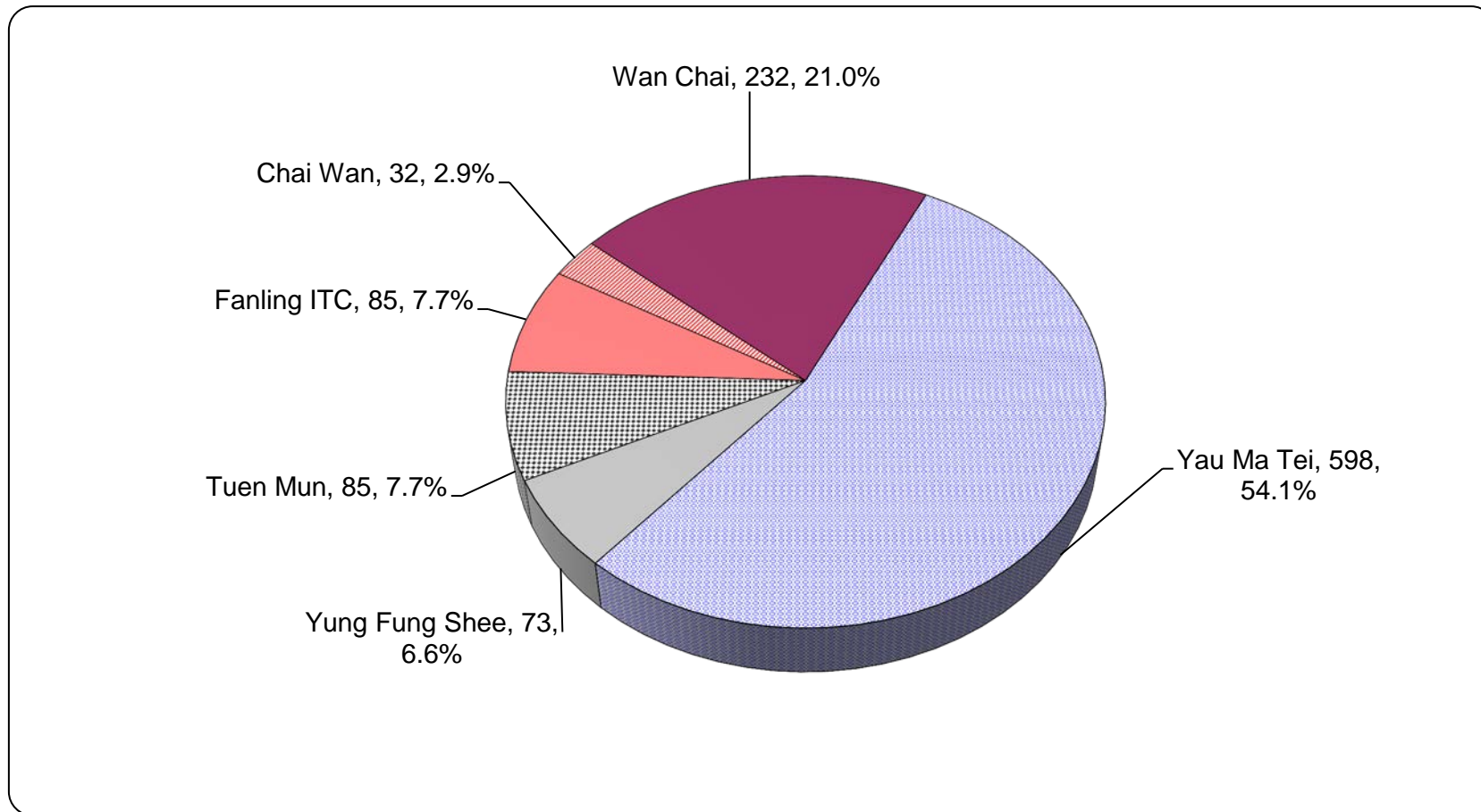
12. Clinic distribution

Chart 12.1 Number of newly report STI in Q3 2018 by clinic (male clients)



Format : [Clinic ; Number ; %]

Chart 12.2 Number of newly report STI in Q3 2018 by clinic (female clients)



Format : [Clinic ; Number ; %]