

INDONESIA

COUNTRY DATA

EPIDEMIC ESTIMATES

	2010	2015	2021
New HIV infections			
New HIV infections (all ages)	50 000 [48 000–53 000]	39 000 [37 000–41 000]	27 000 [25 000–28 000]
New HIV infections (0–14)	3300 [2900–3700]	3900 [3400–4400]	3200 [2700–3700]
New HIV infections (15–24)	26 000 [20 000–30 000]	20 000 [15 000–23 000]	13 000 [9400–15 000]
New HIV infections (women, 15+)	18 000 [17 000–20 000]	15 000 [14 000–16 000]	9000 [8300–9700]
New HIV infections (men, 15+)	29 000 [27 000–31 000]	20 000 [19 000–22 000]	14 000 [13 000–15 000]
HIV incidence (all ages) per 1000 population	0.21 [0.20–0.22]	0.15 [0.14–0.16]	0.10 [0.09–0.10]
AIDS-related deaths			
AIDS-related deaths (all ages)	14 000 [13 000–15 000]	24 000 [22 000–26 000]	26 000 [24 000–29 000]
AIDS-related deaths (0–14)	1900 [1700–2100]	2600 [2300–2900]	2400 [2000–2800]
AIDS-related deaths (women, 15+)	2900 [2700–3200]	6200 [5800–6900]	8800 [8100–9800]
AIDS-related deaths (men, 15+)	8900 [8200–9700]	15 000 [14 000–16 000]	14 000 [13 000–16 000]
People living with HIV			
People living with HIV (all ages)	410 000 [390 000–430 000]	520 000 [490 000–550 000]	540 000 [510 000–570 000]
People living with HIV (0–14)	8500 [7700–9300]	15 000 [13 000–16 000]	19 000 [17 000–21 000]
People living with HIV (women, 15+)	130 000 [120 000–130 000]	180 000 [170 000–190 000]	200 000 [190 000–210 000]
People living with HIV (men, 15+)	270 000 [260 000–280 000]	320 000 [310 000–340 000]	330 000 [310 000–350 000]
HIV prevalence (15–49)	0.3 [0.3–0.3]	0.4 [0.3–0.4]	0.3 [0.3–0.4]

LAWS AND POLICIES

Laws criminalizing the transmission of, non-disclosure of or exposure to HIV transmission	Yes
Criminalization of sex work among consenting adults	Any criminalization or punitive regulation of sex work
Criminalization of same-sex sexual acts in private	Yes, penalty not specified
Criminalization of possession of small amounts of drugs	Yes
Criminalization of transgender people	No
Laws or policies restricting the entry, stay and residence of people living with HIV	Prohibit short- and/or long-stay and require HIV testing or disclosure for some permits
Parental consent for adolescents to access HIV testing	Yes
Spousal consent for married women to access sexual and reproductive health services	No
Mandatory HIV testing for marriage, work or residence permits or for certain groups	No

STIGMA AND DISCRIMINATION

Percentage of women aged 15–49 years who report discriminatory attitudes towards people living with HIV ... 2017

... 68.7

Percentage of people living with HIV who report experienced stigma and discrimination in the general community in the last 12 months ... 2019

4.6

Percentage of people living with HIV who report experiences of HIV-related discrimination in health-care settings ...

GENDER INEQUALITY AND VIOLENCE

Proportion of ever-married or partnered women aged 15–49 years who experienced physical or sexual violence from a male intimate partner in the past 12 months ...

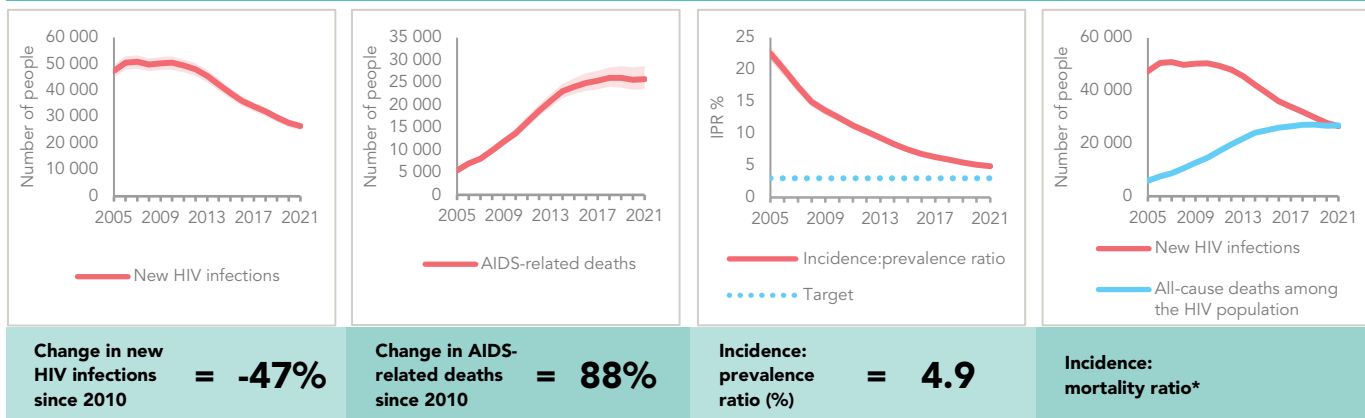
Percentage of women and men aged 15 to 49 years who agree that a husband is justified in hitting or beating his wife for specific reasons (Refers to women only) ... 2017

32.00

EXPENDITURES

	Financing sources					Total
	Domestic private	Domestic public	International: PEPFAR	International: Global Fund	International: all others	
Last available report: 2020	US\$ 0	US\$ 83 439 232	US\$ 7 513 602	US\$ 64 399 760	US\$ 2 373 169	US\$ 157 725 763

EPIDEMIC TRANSITION METRICS



* The incidence:mortality ratio is not published if the country has not achieved antiretroviral therapy coverage of 91% or higher (the testing and treatment target for 2025).

KEY POPULATIONS

	Sex workers	Men who have sex with men	People who inject drugs	Transgender people	Prisoners
Estimated size of population	277 600	...	34 500	34 700	268 000
HIV prevalence	2.1%	17.9%	13.7%	11.9%	0.7%
HIV testing and status awareness	38.6%	55.5%	57.2%	65.0%	...
Antiretroviral therapy coverage	22.4%	37.9%	...	34.4%	0.3%
Condom use	66.8%	69.6%	34.1%	68.9%	...
Coverage of HIV prevention programmes
Avoidance of health care because of stigma and discrimination
Expenditures in US\$ (2020)	3 458 406	4 243 639	798 200	822 685	10 643

HIV COMORBIDITIES

Estimated number of incident tuberculosis cases among people living with HIV (2020)	18 000 [7700 -32 000]
People living with HIV who started TB preventive therapy (2020)	17 274
Cervical cancer screening of women living with HIV	...
People coinfectd with HIV and hepatitis C virus starting hepatitis C treatment	...

HIV PREVENTION

Adults aged 15+ years with unsuppressed viral load	...
Knowledge of HIV prevention among young people aged 15-24 years	...
— Women	...
— Men	...
Condom use at last sex with a non-marital, non-cohabiting partner among people aged 15-49 years	...
— Women	...
— Men	...

Women aged 15-49 years who have their demand for family planning satisfied by modern methods (2017) **77%**

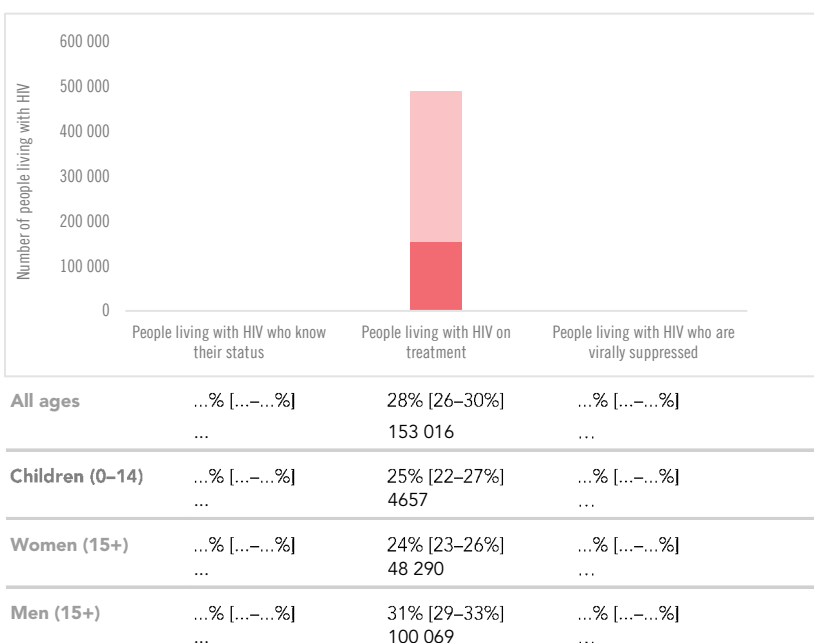
Men aged 15-49 years who are circumcised **Not applicable**

Voluntary medical male circumcisions performed according to national standards **Not applicable**

People who received PrEP at least once during the reporting period **...**

Harm reduction	
— Use of sterile injecting equipment at last injection (2019)	89.8%
— Needles and syringes distributed per person who injects (2021)	1
— Coverage of agonist opioid methadone therapy (2021)	1.6%
— Naloxone available (2022)	No

HIV TESTING AND TREATMENT CASCADE



ELIMINATION OF VERTICAL TRANSMISSION

	2015	2021
Percentage of pregnant women living with HIV accessing antiretroviral medicines	8% [7-9%]	15% [13-17%]
Final vertical transmission rate including during breastfeeding	32.4% [31.0-33.7%]	30.8% [29.4-32.3%]
Early infant diagnosis	6.1% [5.5-7.1%]	5.2% [4.6-6.1%]