



# **THE MALDIVES HEALTH STATISTICS 2013**

**Ministry of Health**  
Male', Republic of Maldives



# **THE MALDIVES HEALTH STATISTICS 2013**

Ministry of Health  
Republic of Maldives

© Ministry of Health 2013

All rights reserved. No part of this publication may be reproduced or transmitted in any form or by any means without a written permission from the Ministry of Health. Excerpts from this publication may be used for research and other purposes provided that due acknowledgment is made.

This publication is intended to provide accurate information and includes materials from sources considered to be reliable. It should also be recognized that the data used in this publication were accurate at the time of compilation and printing although some changes due to revision and change in collection may have occurred since then.

Published by:

Health Information & Research Unit, Planning and International Health Section

Ministry of Health

Male'

Republic of Maldives.

Tel: +960 3328887

Fax: +960 3328889

Email: [ppd@health.gov.mv](mailto:ppd@health.gov.mv)

Website: <http://www.health.gov.mv>

Data Verification:	Ms.Mariyam Mohamed, Statistical Officer Ms.Aminath Nafha, Senior Administrative Officer
Layout & Design:	Ms.Aminath Nafha, Senior Administrative Officer Ms.Aishath Saeed, Senior Administrative Officer
Cover page:	Ms.Aishath Saeed, Senior Administrative Officer
Data Compilation:	Ms.Mariyam Mohamed, Statistical Officer
Date of Publication	December 2014

ISBN 978-99915-66-49-8

## TABLE OF CONTENTS

FOREWORD .....	v
ACKNOWLEDGEMENTS.....	vi
EXECUTIVE SUMMARY .....	vii
NATALITY.....	10
GRAPH 1: CRUDE BIRTH RATE BY SEX PER 1000 POPULATION 2002– 2012 .....	10
GRAPH 2: TOTAL NUMBER OF BIRTHS, BY PLACE OF BIRTH, 2007 - 2012.....	10
GRAPH 3: PERCENTAGE OF BABIES BORN WITH LOW BIRTH WEIGHT (<2500G) BY NATIONALS, 2008– 2012.....	11
GRAPH 4: PERCENTAGE OF BIRTHS BY MODE OF DELIVERY 2012 .....	11
GRAPH 5: PERCENTAGE OF BIRTHS TO MOTHERS, UNDER 20 YEARS OF AGE, 2001 – 2012.....	12
TABLE 1: CRUDE BIRTH RATE PER 1000 POPULATION, 2002–2012 .....	12
TABLE 2: LIFE EXPECTANCY AT BIRTH, 2002 - 2012 .....	13
TABLE 3: TOTAL NUMBER OF LIVE BIRTHS BY GENDER, 2002 - 2012 .....	13
TABLE 4: NUMBER AND PERCENTAGES OF BIRTHS, MALE' AND ATOLLS, 2009 - 2012.....	14
TABLE 5: LIVE AND STILL BIRTHS BY PLACE OF DELIVERY, 2010- 2012.....	14
TABLE 6: NUMBER AND PERCENTAGE OF BIRTHS BY MODE OF DELIVERY, 2010- 2012.....	15
TABLE 7A: NUMBER AND PERCENTAGE OF LIVE AND STILL BIRTHS, MODE OF DELIVERY BY HEALTH FACILITY, 2012.....	16
TABLE 7B: NUMBER AND PERCENTAGE OF LIVE BIRTHS, MODE OF DELIVERY BY HEALTH FACILITY, 2012 .....	17
TABLE 7C: NUMBER AND PERCENTAGE OF STILL BIRTHS, MODE OF DELIVERY BY HEALTH FACILITY, 2012.....	18
TABLE 8B: AVERAGE BIRTH WEIGHT (in grams) BY SEX, 2010 - 2012 .....	19
TABLE 9: BIRTH WEIGHT BY CATEGORIES, 2008- 2012 .....	19
PERCENTAGE OF LIVE BIRTHS BY BIRTH WEIGHT, 2011.....	20
PERCENTAGE OF LIVE BIRTHS BY BIRTH WEIGHT, 2012.....	20
TABLE 11: NUMBER AND PERCENTAGES OF LIVE & STILL BIRTHS BY TYPE OF HEALTH PROFESSIONAL ATTENDED- 2011 – 2012.....	21
TABLE 12: NUMBER AND PERCENTAGE OF LIVE BIRTHS BY AGE OF MOTHER, 2009– 2012.....	23
MORTALITY .....	25
GRAPH 6: NEONATAL MORTALITY RATE PER 1000 LIVE BIRTHS 2002–2012 .....	25
GRAPH 7: INFANT MORTALITY RATE PER 1000 LIVE BIRTHS 2002 - 2012.....	25

GRAPH 8: UNDER FIVE MORTALITY RATE PER 1000 LIVE BIRTHS 2002– 2012 .....	26
GRAPH 9: AGE SPECIFIC MORTALITY RATE PER 10,000 POPULATION, 2011 .....	26
GRAPH 10: AGE SPECIFIC MORTALITY RATE PER 10,000 POPULATION, 2012 .....	27
GRAPH 11: MATERNAL MORTALITY RATIO PER 100,000 LIVE BIRTHS, 2002- 2012 .....	27
TABLE 13: CRUDE DEATH RATE PER 1000 POPULATION, 2002 - 2012 .....	28
TABLE 14: STILL BIRTH RATE PER 1000 LIVE BIRTHS, 2002 - 2012 .....	28
TABLE 15: INFANT MORTALITY RATE PER 1000 LIVE BIRTHS BY SEX, 2002 - 2012.....	29
TABLE 16: UNDER FIVE MORTALITY RATE PER 1000 LIVE BIRTHS BY SEX, 2002 - 2012.....	29
TABLE 17: MATERNAL MORTALITY RATIO PER 100,000 LIVE BIRTHS, 2002 - 2012.....	30
TABLE 18: NEONATAL DEATH RATE PER 1000 LIVE BIRTHS, 2002 - 2012.....	30
TABLE 19: PERINATAL AND POSTNATAL DEATH RATE PER 1000 LIVE BIRTHS, 2002 - 2012 .....	31
TABLE 20: AGE SPECIFIC MORTALITY RATE PER 10,000 POPULATION, 2010 - 2012 .....	31
TABLE 21: TOTAL NUMBER OF DEATHS BY SEX, 2002 - 2012.....	32
TABLE 22A: TOTAL NUMBER OF DEATHS BY AGE, 2008 - 2012 .....	33
TABLE 23B: TWENTY LEADING CAUSES OF DEATH FOR ALL AGES, 2011 .....	34
TABLE 23B: TWENTY LEADING CAUSES OF DEATH FOR ALL AGES, 2012 .....	35
TABLE 24: DEATHS BY AGE GROUP FOR THALASSAEMICS, 2002 - 2012.....	36
MORBIDITY .....	38
GRAPH 12A: NUMBER OF DENGUE FEVER, DENGUE HAEMORRHAGIC FEVER & DENGUE SHOCK SYNDROME CASES 2009.....	38
GRAPH 12B: NUMBER OF DENGUE FEVER, DENGUE HAEMORRHAGIC FEVER & DENGUE SHOCK SYNDROME CASES 2010.....	39
GRAPH 12C: NUMBER OF DENGUE FEVER, DENGUE HAEMORRHAGIC FEVER & DENGUE SHOCK SYNDROME CASES 2011.....	39
GRAPH 12D: NUMBER OF DENGUE FEVER, DENGUE HAEMORRHAGIC FEVER & DENGUE SHOCK SYNDROME CASES 2012.....	40
GRAPH 15: NUMBER OF CHIKUNGUNYA CASES 2010- 2012.....	40
TABLE 25: PREVALENCE AND INCIDENCE OF TUBERCULOSIS, 2002 - 2012.....	41
TABLE 26: PREVALENCE AND INCIDENCE LEPROSY, 2002 - 2012.....	41
TABLE 27: INCIDENCE AND CASE FATALITY RATES FOR DIARRHOEA, 2002 - 2012 .....	42
TABLE 28: HIV STATUS IN MALDIVES, 2002 - 2012.....	42
TABLE 29: VACCINATION COVERAGE IN THE MALDIVES, 2002 - 2012.....	43
TABLE 30: SEXUALLY TRANSMITTED INFECTIONS – SYPHILIS STATUS, 2008– 2012 .....	43
TABLE 31: SEXUALLY TRANSMITTED INFECTIONS BY SYMPTOMATIC DIAGNOSIS, 2008- 2012 .....	43

TABLE 32: CASES OF DENGUE FEVER BY MONTH, 2007 - 2012 .....	44
TABLE 33: CASES OF DENGUE HAEMORRAGIC FEVER BY MONTH, 2007- 2012.....	44
TABLE 34: CASES OF DENGUE SHOCK SYNDROME BY MONTH, 2007- 2012 .....	45
TABLE 35: CASES OF CHIKUNGUNYA BY MONTH, 2008 - 2012.....	45
TABLE 36: THALASSAEMIA MAJOR DEATH AND NEW CASES IN THE MALDIVES, 2001 - 2012.....	46
TABLE 37: THALASSAEMIA MAJOR CHILDREN IN THE MALDIVES, 2006 - 2012.....	46
TABLE 38: PERCENTAGE OF THALASSAMIA CASES AMONG TOTAL SCREENED BY CLASSIFICATION,2004- 2012.....	47
TABLE 39: DISTRIBUTION OF MEDICAL STAFF IN mALE' AND ATOLLS BY SEX, 2010 .....	49
TABLE 40: DISTRIBUTION OF MEDICAL PERSONNEL BY LOCALS AND EXPATRIATES, 2010.....	50
HEALTH CARE FINANCE.....	52
TABLE 41A: NATIONAL HEALTH ACCOUNTS – SELECTED RATIO* INDICATORS FOR EXPENDITURES ON HEALTH2011 .....	52
TABLE 41B: NATIONAL HEALTH ACCOUNTS – HEALTH SYSTEM EXPENDITURE & FINANCING, 2011 .....	53
TABLE 42: ALLOCATIONS AND EXPENDITURE OF GOVERNMENT BUDGET ON HEALTH SECTOR, 54 2004–2012.....	54
SOCIAL PROTECTION.....	56
TABLE 43: NUMBER OF PERSONS COVERED UNDER DIFFERENT SOCIAL PROTECTION SCHEMES BY ATOLL, 2012.....	56
TABLE 44: GOVERNMENT EXPENDITURE ON DIFFERENT SOCIAL PROTECTION SCHEMES BY TYPE, 2012 .....	57
TABLE 45: EXPENDITURE ON ELECTRICITY SUBSIDY MALE', 2011-2012.....	58
TABLE 46: EXPENDITURE ON MADHANA SERVICES BY TYPE OF INSTITUTION AND ATOLL, 2012	58
TABLE 47: EXPENDITURE ON PERSONS COVERED UNDER MADHANA POLICIES BY TYPE OF SERVICE, 2012 .....	59
DATA FROM NATIONAL HEALTH LABORATORY .....	61
WATER MICROBIOLOGY .....	61
WATER CHEMISTRY.....	61
FOOD CHEMISTRY .....	61
TABLE 48: FOOD MICROBIOLOGY.....	61
DATA FROM SURVEYS .....	63
GRAPH 19: PROPORTION OF UNDER-FIVE CHILDREN WHO HAVE RECEIVED VITAMIN A IN THE PAST 6 MONTHS BY REGION.....	63

Table 49B: Dewormin AND VITAMIN-A DATA - 2012 .....	64
table 50: Vaccine Refusals reported from Health Facilities.....	65
TABLE 61: PERCENTAGE DISTRIBUTION OF CHILDREN EXCLUSIVELY BREASTFED BY COMPLETED AGE IN MONTHS - MICS 2001 .....	66
TABLE 62: DISTRIBUTION OF PREVALENCE OF EXCLUSIVE BREASTFEEDING .....	66
TABLE 51: PREVALENCE OF NCD RISK - 2004 .....	67
TABLE 52: COMPARISION OF REPRODUCTIVE HEALTH RELATED INDICATORS - 1999, 2004, 2007& 2009.....	67
TBALE 53: ANAEMIA AMONG WOMEN –MICS 2001 .....	68
TABLE 54: ANAEMIA AMONG WOMEN – NMS 2007 .....	68
HOSPITAL STATISTICS .....	70
GRAPH21 :NUMBER OF OUTPATIENT VISITS BY HOSPITAL 2010 - 2012.....	70
GRAPH 22 :AVERAGE NUMBER OF OUTPATIENTS PER DAY BY HOSPITAL 2010 - 2012 .....	70
GRAPH 23: AVERAGE LENGTH OF STAY BY HOSPITAL 2010 - 2012 .....	71
GRAPH 24: LSCS PERCENTAGE BY HOSPITAL 2010 - 2012 .....	71
GRAPH 25: NUMBER OF INVESTIGATIONS PER PATIENT, BY hospitals 2010 - 2012 .....	72
TABLE 55: NUMBER OF OUTPATIENT VISITS BY HOSPITAL 2009 - 2012 .....	73
TABLE 56: AVERAGE NUMBER OF OUTPATIENT VISITS PER DAY, BY HOSPITAL, 2009 - 2012.....	74
TABLE 57: TOTAL NUMBER OF INPATIENTS, BY HOSPITAL, 2009 - 2012.....	75
TABLE 58: AVERAGE HOSPITAL LENGTH OF STAY, BY HOSPITAL, 2009 - 2012.....	76
TABLE 59: AVERAGE BED OCCUPANCY RATE, BY HOSPITAL, 2009 - 2012.....	77
OTHERS.....	79
TABLE 43: CONTRACEPTIVE USER RATE, 2001 - 2012.....	79
TABLE 44: CONTRACEPTIVE USER RATE BY ATOLLS, 2008 - 2012.....	80
TABLE 45: STATISTICS OF ARRESTS MADE FOR DRUG CASES , 2001 - 2012.....	81
TABLE 46: IMPORTS OF TOBACCO, 2001 - 2012.....	81
APPENDIX.....	83
PROJECTED MID YEAR POPULATION ESTIMATES BY AGE 2009-2015.....	83
CENSUS POPULATION BY SEX 1990-2006 .....	83
POPULATION GROWTH RATE 1990-2006 .....	84
SUMMARY MEASURES OF FERTILITY BASED ON REPORTED BIRTH DATA FROM CENSUS, MALDIVES 1990, 2000 AND 2006.....	84
REFERENCES .....	86

## FOREWORD

The government of Maldives places high priority to improve the health and welfare of people of Maldives through efficiency of resource allocation in a way that assures universal health insurance for all the citizens of the country. The policy of the government is to maintain one public health facility on each inhabited island in order to ensure affordable and quality health services with better access. The provision of health care services in Maldives is through a 4 tier health care system. Severe limitation of local technical professionals and scarcity of financial resources are main challenges in meeting the needs of the community. The role of private sector is also encouraged by the state, especially in the urban and semi urban islands. With expansion of services by the public as well as private sector the regulatory function of the health system needs to be strengthened.

Health Statistics in the form of an annual publication aims to provide factual information on performance of health systems. Every effort is made to provide accurate data on the health services provided at both public and private health care facilities. The statistics support in formulating evidence-based health policies and monitor achievement of targets set in our National Plans and international commitments such as the Millennium Development Goals (MDGs). Furthermore, it is essential that high quality data are collected and regular data flow from different centres to the ministry is ensured for close monitoring of the current health status of the country so that appropriate measures can be taken to bring about necessary health reforms.

The Maldives Health Statistics 2013 is the seventh publication of this series. The information in the publication represents data from January to December 2012 with comparable figures for past 10 years.

For bringing out this publication, I sincerely acknowledge the hard work of Health Information Section staffs, Ministry of Health and Gender and also thank all the staff who were involved in providing the statistics from the departments, divisions and health care facilities.

I believe that, policymakers, researchers and students will use this publication extensively and that it remains as a useful reference document.



Colonel (Rtd) Mohamed Nazim

Acting Minister of Health



## ACKNOWLEDGEMENTS

The Maldives Health Statistics 2014 was prepared by the Health Information Section of the Ministry of Health. This publication was made possible through valuable contribution from several concerned authorities and stakeholders; including the health care institutions, Divisions of Ministry of Health, Health Protection Agency (HPA), National Social protection Agency (NSPA), Maldives Food and Drug Authority (MFDA), National Thalassemia Centre, presently named as Maldives Blood Services (MBS)), Department of National Planning, Maldives Police Services and Maldives Customs Services.

The demographic data provided by Department of National Planning was vital in computation of several of the indicators.

I sincerely acknowledge the continued support and co-operation of these authorities in providing the necessary information.

Majority of the information contained in this publication is from the National Vital Statistics System (VSS) maintained by the Ministry of Health. The data for this system is obtained from the National Vital Registration System (VRS) maintained by the Department of National Registration (DNR). I gratefully acknowledge the support provided by VRS staff at the Department of National Registration.

Further, my appreciation goes to the hardworking staff of Health Information Section, Ministry of Health for compiling the data, and making this publication possible.



Dr. Sheeza Ali

Director General of Health Services

## EXECUTIVE SUMMARY

The Maldives Health Statistics is published with the main objective of providing easy access to up-to-date comprehensive statistical information on various aspects of health. The publication is divided into several subsections. This publication also includes updates and revisions of the data published in previous years.

Since the early 1990s the population growth rate has shown steady decline. Crude Birth Rate in the last few years has stabilized at 22 per 1000. However, an increase in birth rate is predicted in the years to come as the dominating young population reaches the reproductive age. Crude Death Rate (CDR) had shown a steady decline and it has stabilized between 4 and 3 per 1000 population during the years of the last decade or so. The CDR stands at 3 per 1000 population as of 2012. Significant falls in CDR was seen to be mainly associated with the fall in the infant and child mortality rates over the last two decades. Access to better health care and expansion of health services to the atoll populations and effective immunization programs played a major role in the fall of death rates

The life expectancy trends in the population show marked improvement which indicates improvement in the health status of the population. The life expectancy at birth has increased from 70.0 to 73.0 for males while it has increased from 70.1 to 74.8 for females from year 2000 to 2012 respectively. Several factors may have contribute to the increase in life expectancy such as improved accessibility to health care, improved diagnostic and other health services, and increased awareness within the population leading to increased healthcare seeking behavior and healthy lifestyles.

Maldives has made significant progression reducing child and infant mortality. The MDG target of reducing child mortality has already been achieved. Improvements in maternal health are evident by the reduction in maternal mortality over the years. Though the rate of decline in maternal mortality was not as fast as that of the child mortality, maternal mortality ratio also steadily declined

Maldives is in a status of epidemiological transition, moving from a high burden of communicable diseases towards an increasing burden of non-communicable diseases and addressing social determinants of health while also continuing to strengthen preparedness and control of emerging and re-emerging communicable diseases. Notable achievements have been made in the control of many of the infectious diseases. Most of the communicable diseases have been either eradicated or controlled. Further improvements are still required in access to safe drinking water, improving sanitation and waste management. With the emerging lifestyle changes associated with development; chronic non-communicable diseases have emerged as the main cause of morbidity and mortality in the country. Cardiovascular diseases, chronic respiratory diseases, accidents and injuries and cancers are the leading causes of death in the country. The Ministry of Health is working towards strengthening of the provision of health services for early detection and treatment of non-communicable diseases.

Despite improvements in many areas of health, malnutrition among children continues to be an area of public health concern. However, there are improvements and gains on nutrition as well. A lot of work has been undertaken to improve maternal, child health and reproductive health situation in the country. Almost every birth takes place in a health care facility attended by skilled providers. However, improvements are required to

ensure quality in antenatal, intrapartum and postpartum care. Maldives has long maintained universal high coverage of EPI. Since early 1990s, the coverage rate has been maintained over 90 percent for all vaccines.

The commitment to promote family planning has increased over the past years; however other challenges do exist with regard to contraceptive use and adopting family planning methods. Given the investments in the area, more qualitative research is needed to identify and explore in-depth RH related issues so that these can be better addressed in an evidence based manner. Despite the effort made to promote access to FP services, evidence from surveys conducted over the last 10 years has shown that the contraceptive prevalence rate had declined. Proportion of married women using any modern methods of contraception reduced from 33% in 1999 to 27% in 2009.

Lack of adequately trained human resources is still a major concern in the health sector. A large expatriate workforce contribute to delivery of health services both in public and private sector presents difficulties in patient-doctor communication and interactions, especially at community level. It also means that there is a high staff turnover thus impacting on quality of services.

The government's commitment for improving the health services is evident by the health expenditure by the government. After several attempts to provide the benefits of health insurance, all Maldivians now enjoy a universal health insurance scheme fully financed by the government.

Despite the achievements in the health sector, it is a daunting challenge for Maldives to sustain accessibility of health services equitably throughout the country. The delivery of services is hampered by the geographical nature of the country with numerous islands scattered throughout and often the means of transport is by sea which can be affected by unfavorable weather. In terms of cost effectiveness and sustainability, it is not favorable to have hospitals or health centers in each island as the population in some islands reach up to a few hundred only. Moreover, due to the limited and unreliable public transport system, people in many islands are unable to travel or have to pay high amounts to the private transport services to reach appropriate health care. Considering these factors, health care services provision in Maldives is a costly undertaking.

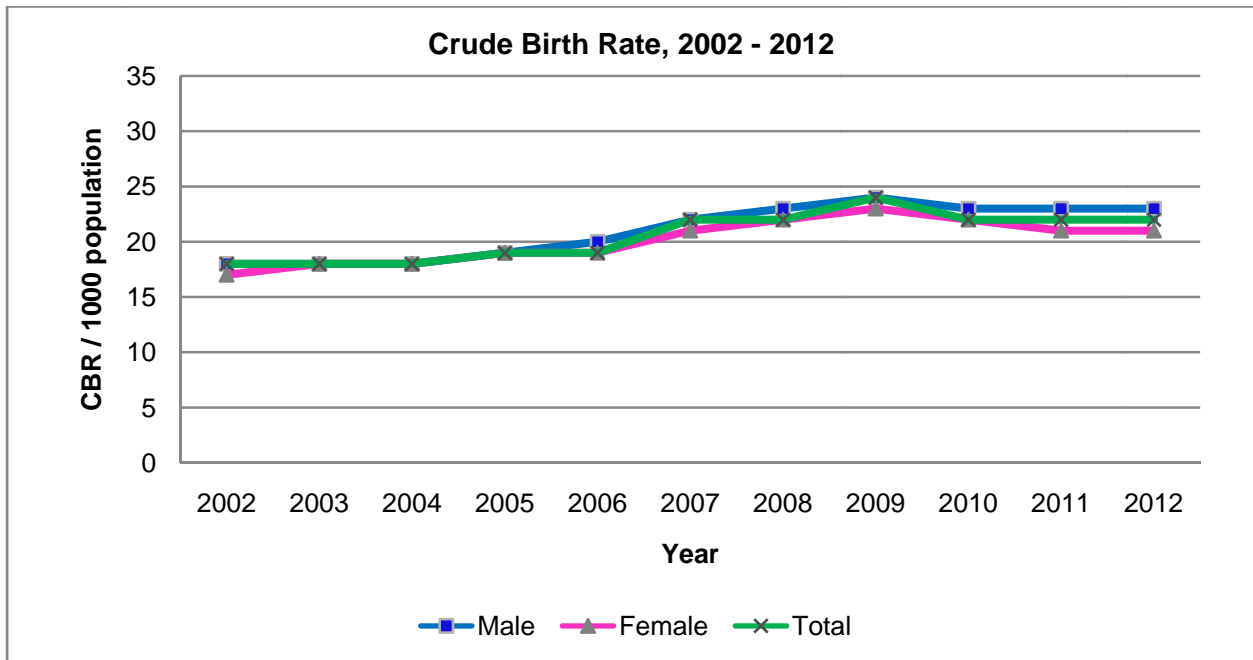
A systematically organized public transportation system is a necessary pre-requisite for the full utilization of the four tier health care delivery system. A sustainable marine transport network will increase accessibility and mobility of the people and is expected to increase economic regeneration at all levels through revitalization of the urban setting and land use.

Overall, it can be said that the trends show improvement in the health and well being of people of Maldives as evident from the health indicators such as Crude Death Rate, Infant Mortality Rate, Under-five Mortality Rate and Maternal Mortality Ratio. Consistent improvements in quality of services are crucial to sustain these developments and to further strengthen health system. Improvements in data collection, collation and analysis are the gateways for proper monitoring of effectiveness and for the application of evidence based decisions when formulating health policies.

# NATALITY

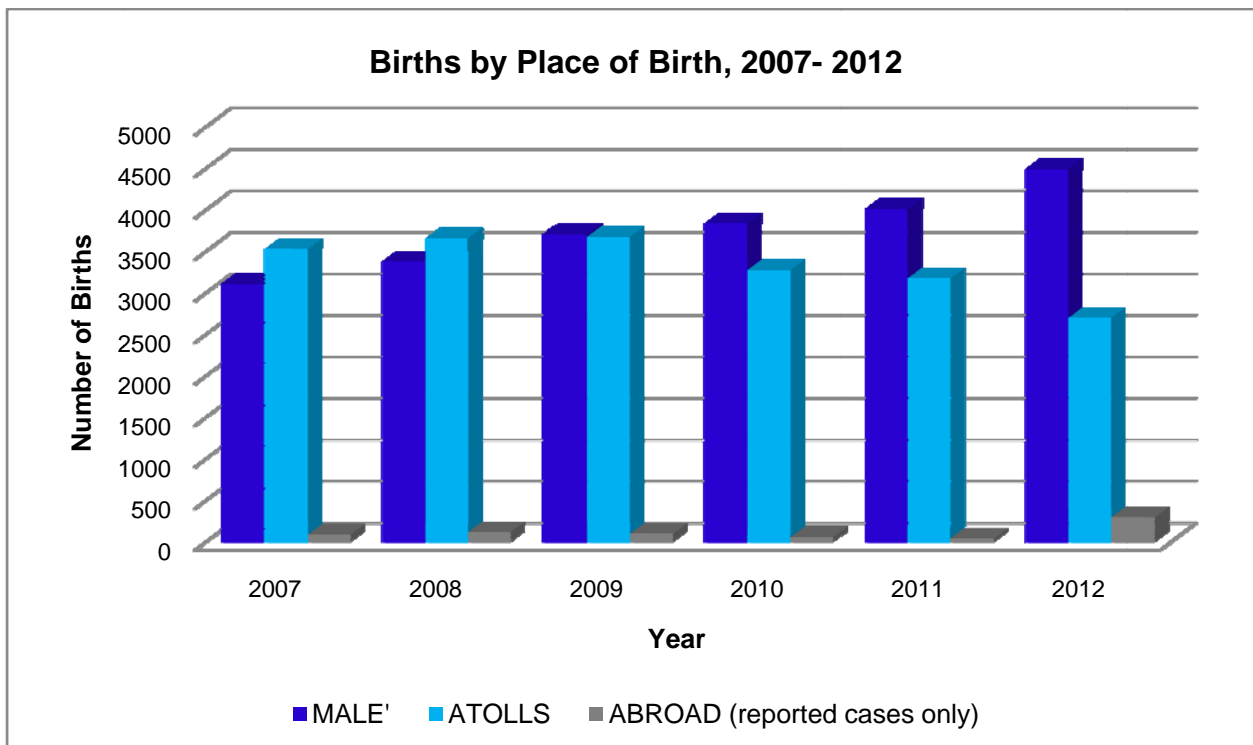
## NATALITY

*GRAPH 1: CRUDE BIRTH RATE BY SEX PER 1000 POPULATION 2002- 2012*



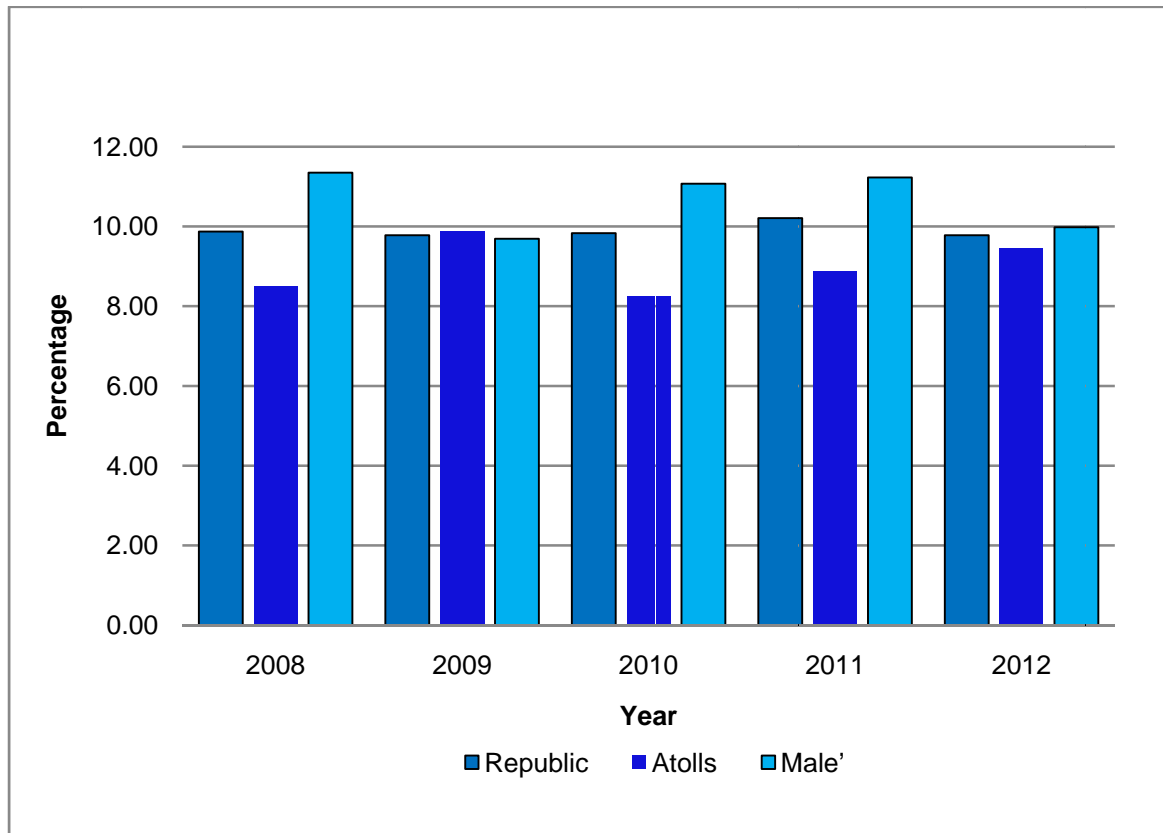
*Source: Vital Statistics System, Ministry of Health 2012*

*GRAPH 2: TOTAL NUMBER OF BIRTHS, BY PLACE OF BIRTH, 2007 - 2012*



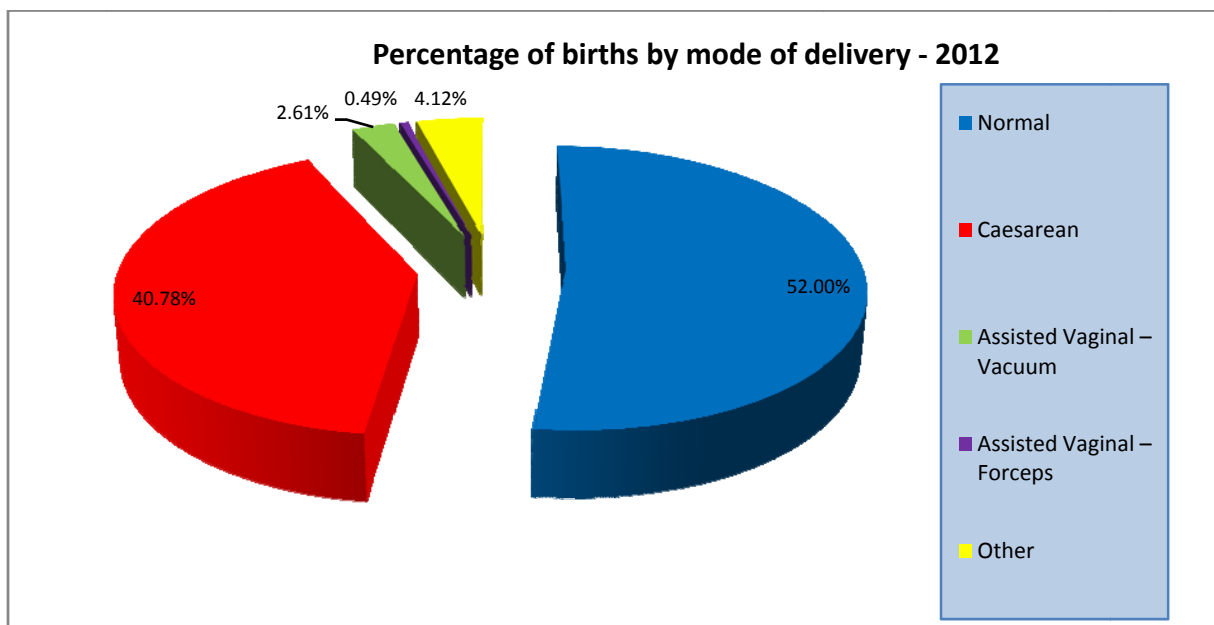
*Source: Vital Statistics System, Ministry of Health 2012*

**GRAPH 3: PERCENTAGE OF BABIES BORN WITH LOW BIRTH WEIGHT (<2500G) BY NATIONALS, 2008- 2012**



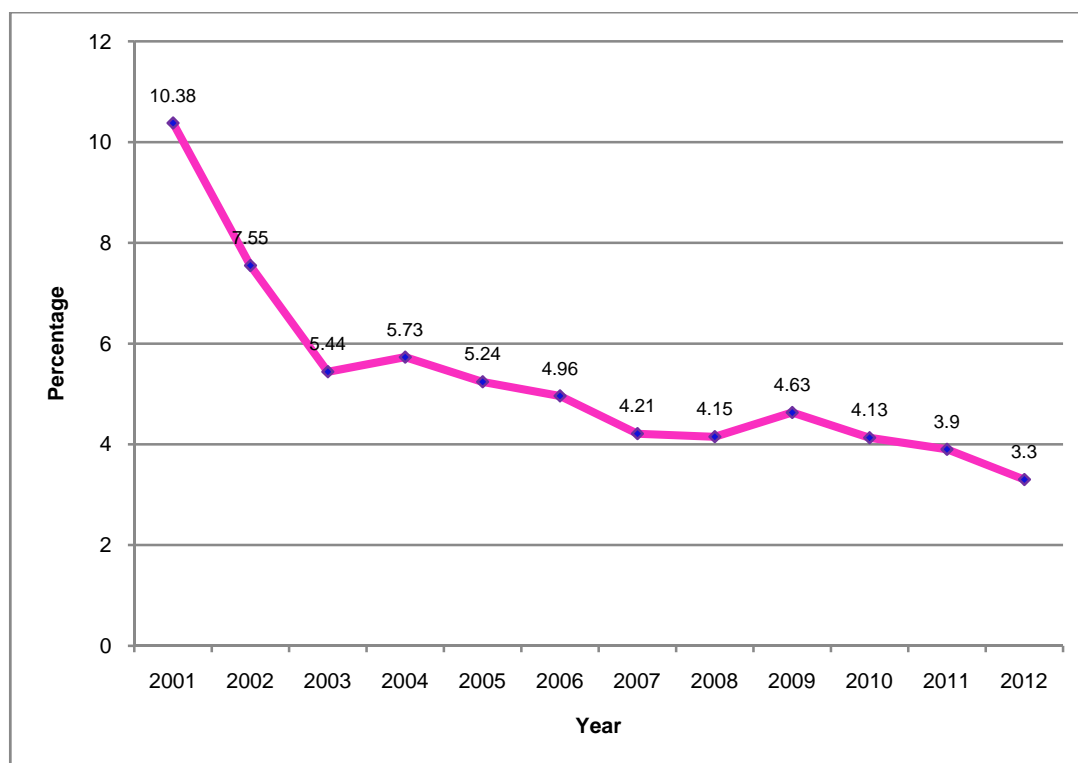
Source: Vital Statistics System, Ministry of Health 2012

**GRAPH 4: PERCENTAGE OF BIRTHS BY MODE OF DELIVERY 2012**



Source: Vital Statistics System, Ministry of Health 2012

**GRAPH 5: PERCENTAGE OF BIRTHS TO MOTHERS, UNDER 20 YEARS OF AGE, 2001 – 2012**



Source: Vital Statistics System, Ministry of Health 2012

**TABLE 1: CRUDE BIRTH RATE PER 1000 POPULATION, 2002-2012**

Year	Republic		
	Total	Male	Female
2002	18	18	17
2003	18	18	18
2004	18	18	18
2005	19	19	19
2006 *	19	20	19
2007	22	22	21
2008	22	23	22
2009	24	24	23
2010	22	23	22
2011	22	23	21
2012	22	23	22

Source: Vital Statistics System, Ministry of Health 2012

\* Crude Birth Rate calculated using the Census population. 2006 = 298,968  
 Note: Crude birth rate is not calculate separately for Atolls and Male' from 2009 onwards

**TABLE 2: LIFE EXPECTANCY AT BIRTH, 2002 - 2012**

Year	Male	Female
2002	70.0	70.9
2003	70.4	71.3
2004	71.1	72.1
2005	71.7	72.7
2006	72.0	73.2
2007	72.3	73.7
2008	72.5	74.1
2009	72.5	74.2
2010	72.6	74.4
2011	72.83	74.81
2012	73.0	74.8

Source: Department of National Planning 2012

\* Note: From 2000 onwards the life expectancy is generated using the software MORTPAK

**TABLE 3: TOTAL NUMBER OF LIVE BIRTHS BY GENDER, 2002 - 2012**

Year	Republic				Atolls				Male'			
	Total	Male	Female	Not Stated	Total	Male	Female	Not Stated	Total	Male	Female	Not Stated
2002	5005	2589	2415	1	3126	1642	1484	0	1879	947	931	1
2003	5157	2687	2470	0	3191	1650	1541	0	1966	1037	929	0
2004	5221	2683	2538	0	3076	1597	1479	0	2145	1086	1059	0
2005	5551	2812	2739	0	3094	1541	1553	0	2457	1259	1198	0
2006	5849	3018	2830	1	3141	1636	1505	0	2708	1382	1325	1
2007	6659	3440	3219	0	3571	1854	1717	0	3088	1586	1502	0
2008	7095	3694	3399	2	3746	1961	1785	0	3349	1733	1614	2
2009	7423	3784	3639	0	3738	1937	1801	0	3685	1847	1838	0
2010	7115	3694	3421	0	3249	1695	1554	0	3811	1969	1842	0
2011	7182	3797	3385	0	3156	1723	1433	0	3988	2048	1940	0
2012	7431	3890	3541	0	2676	1414	1262	0	4460	2300	2160	0

Source: Vital Statistics System, Ministry of Health 2012

Republic data includes births occurred abroad (2012abroad births (Total 295, Male=176, Female=119)

Note1: some of the figures have been revised as previously unavailable data is available.

Note 2: All year's total includes births occurred abroad as well, therefore Atolls total plus Male' total will not be same as Republic total.



TABLE 4: NUMBER AND PERCENTAGES OF BIRTHS, MALE' AND ATOLLS, 2009 - 2012

Place of birth	2009			2010			2011			2012		
	Live births	Still Births	Total Births	Live births	Still Births	Total Births	Live births	Still Births	Total Births	Live births	Still Births	Total Births
Male'	3685	23	3708	3811	23	3834	3988	25	4013	4460	30	4490
	99.38	0.62%	100%	99.40%	0.60%	100%	99.38%	0.62%	100%	99.30%	0.67%	100%
Atolls	3642	31	3673	3249	25	3274	3156	18	3174	2676	20	2696
	99.16%	0.84%	100%	99.24%	0.76%	100%	99.43%	0.57%	100%	99.26%	0.74%	100%
Abroad	96	NA	96	55	NA	55	38	NA	38	295	NA	295
TOTAL	7423	54	7477	7115	48	7163	7182	43	7225	7431	50	7481
	99.30%	72.00%	100%	99.33%	0.67%	100%	99.40%	0.60%	100%	99.33%	0.67%	100%

Source: Vital Statistics System, Ministry of Health 2012

Note: NA – data not available

TABLE 5: LIVE AND STILL BIRTHS BY PLACE OF DELIVERY, 2010- 2012

Place of birth	2010		2011		2012	
	Live births	Still Births	Live births	Still Births	Live births	Still Births
IGMH	2655	20	2600	24	2801	25
HulhuMale' Hospital	75	0	98	0	120	1
ADK Hospital	1072	3	1291	1	1529	2
Regional Hospitals	1839	16	1904	9	1633	12
Atoll Hospitals	1120	7	1029	8	889	9
Health Centres	267	0	181	1	137	1
Health Posts	5	1	4	0	1	0
Home	19	1	29	0	20	0
Other	8	0	8	0	6	0
Abroad	55	NA	38	NA	295	0
<b>TOTAL</b>	<b>7115</b>	<b>48</b>	<b>7182</b>	<b>43</b>	<b>7431</b>	<b>50</b>

Source: Vital Statistics System, Ministry of Health 2012

\*Others Includes births on dhoani, ambulance, others, not stated, etc

**TABLE 6: NUMBER AND PERCENTAGE OF BIRTHS BY MODE OF DELIVERY, 2010- 2012**

Mode of Delivery	2010			2011			2012		
	Total	Male	Female	Total	Male	Female	Total	Male	Female
<b>Normal</b>	4876	2481	2394	3914	2025	1889	3890	1956	1934
	68.07%	66.68%	69.57%	54.17%	52.98%	55.51%	52.00%	49.96 %	54.23%
<b>Caesarean</b>	1906	1026	880	2970	1599	1371	3051	1651	1400
	26.61%	27.57%	25.57%	41.11%	41.84%	40.29%	40.78%	42.17 %	39.26%
<b>Assisted Vaginal – Vacuum</b>	285	156	129	206	111	95	195	111	84
	3.98%	4.19%	3.75%	2.85%	2.90%	2.79%	2.61%	2.84 %	2.36%
<b>Assisted Vaginal – Forceps</b>	54	32	22	73	46	27	37	15	22
	0.75%	0.86%	0.64%	1.01%	1.20%	0.79%	0.49%	0.38 %	0.62%
<b>Other</b>	13	7	6	21	13	8	14	5	9
	0.18%	0.19%	0.17%	0.29%	0.34%	0.24%	0.19%	0.13 %	0.25%
<b>Not stated</b>	29	19	10	41	28	13	294	117	117
	0.40%	0.51%	0.29%	0.57%	0.73%	0.38%	3.93%	4.52 %	3.28%
<b>TOTAL</b>	<b>7163</b>	<b>3721</b>	<b>3441</b>	<b>7225</b>	<b>3822</b>	<b>3403</b>	<b>7481</b>	<b>3915</b>	<b>3566</b>

Source: Vital Statistics System, Ministry of Health 2012

Note: Mode of delivery categories - **Normal**: includes spontaneous vaginal, assisted vaginal (non-instrumental) and normal deliveries, **Caesarean**: includes unspecified, elective and emergency caesarean deliveries, **Others**: includes live spontaneous and induced abortion and breech deliveries and **Not stated** includes births occurred abroad, spontaneous abortions and births with mode of delivery not stated

**TABLE 7A: NUMBER AND PERCENTAGE OF LIVE AND STILLBIRTHS, MODE OF DELIVERY BY HEALTH FACILITY, 2012**

Place of Birth	Normal	Caesarean #	Vacuum	Forceps	Others ~	Total
<b>IGMH</b>	1701	1095	21	0	9	2826
	22.74%	14.64%	0.28%	0.00%	0.12%	37.78%
<b>Private Hospital</b>	705	689	128	8	1	1531
	9.42%	9.21%	1.71%	0.11%	0.02%	20.47%
<b>Hulhu Male' Hospital</b>	70	51	0	0	0	121
	0.94%	0.68%	0.00%	0.00%	0.00%	1.62%
<b>Regional Hospitals</b>	781	810	34	16	4	1645
	10.44%	10.83%	0.45%	0.21%	0.06%	21.99%
<b>Atoll Hospitals</b>	468	405	12	13	0	898
	6.26%	5.41%	0.16%	0.17%	0.00%	12.00%
<b>Health Centers</b>	135	1	0	0	2	138
	1.80%	0.01%	0.00%	0.00%	0.03%	1.84%
<b>Health Posts</b>	1	0	0	0	0	1
	0.01%	0.00%	0.00%	0.00%	0.00%	0.01%
<b>Others *</b>	26	0	0	0	0	26
	0.35%	0.00%	0.00%	0.00%	0.00%	0.35%
<b>Abroad</b>	3	0	0	0	292	295
	0.04%	0.00%	0.00%	0.00%	3.91%	3.94%
<b>Total</b>	3890	3051	195	37	308	7481
	<b>52.00%</b>	<b>40.78%</b>	<b>2.61%</b>	<b>0.49%</b>	<b>4.12%</b>	

Source: Vital Statistics System, Ministry of Health 2012

\* Includes, on dhoani, home, ambulance, not stated and others

# Includes emergency and unspecified caesareans

~ Includes induced and spontaneous abortion and breech deliveries

TABLE 7B: NUMBER AND PERCENTAGE OF LIVE BIRTHS, MODE OF DELIVERY BY HEALTH FACILITY,

2012

Place of Birth	Normal	Caesarean #	Vacuum	Forceps	Others ~	Total
<b>IGMH</b>	1686	1087	21	0	7	2801
	22.69%	14.63%	0.28%	0.00%	0.09%	37.69%
<b>Private Hospital</b>	703	689	128	8	1	1529
	9.46%	9.27%	1.72%	0.11%	0.01%	20.58%
<b>Hulhu Male' Hospital</b>	69	51	0	0	0	120
	0.93%	0.69%	0.00%	0.00%	0.00%	1.61%
<b>Regional Hospitals</b>	776	804	34	16	3	1633
	10.44%	10.82%	0.46%	0.22%	0.04%	21.98%
<b>Atoll Hospitals</b>	461	404	11	13	0	889
	6.20%	5.44%	0.15%	0.17%	0.00%	11.96%
<b>Health Centers</b>	135	1	0	0	1	137
	1.82%	0.01%	0.00%	0.00%	0.01%	1.84%
<b>Health Posts</b>	1	0	0	0	0	1
	0.01%	0.00%	0.00%	0.00%	0.00%	0.01%
<b>Others *</b>	26	0	0	0	0	26
	0.35%	0.00%	0.00%	0.00%	0.00%	0.35%
<b>Abroad</b>	3	0	0	0	292	295
	0.04%	0.00%	0.00%	0.00%	3.93%	3.97%
<b>Total</b>	<b>3860</b>	<b>3036</b>	<b>194</b>	<b>37</b>	<b>304</b>	<b>7431</b>
	<b>51.94%</b>	<b>40.86%</b>	<b>2.61%</b>	<b>0.50%</b>	<b>4.09%</b>	

Source: Vital Statistics System, Ministry of Health 2012

\* Includes, on dhoani, home, ambulance, not stated and others

# Includes emergency and unspecified caesareans

~ Includes induced and spontaneous abortion and breech deliveries

**TABLE 7C: NUMBER AND PERCENTAGE OF STILL BIRTHS, MODE OF DELIVERY BY HEALTH FACILITY,**

**2012**

Place of Birth	Normal	Caesarean #	Vacuum	Forceps	Others ~	Total
<b>IGMH</b>	15	8	0	0	2	<b>25</b>
	30.00%	16.00%	0.00%	0.00%	4.00%	50.00%
<b>Private Hospital</b>	2	0	0	0	0	<b>2</b>
	4.00%	0.00%	0.00%	0.00%	0.00%	4.00%
<b>Hulhu Male' Hospital</b>	1	0	0	0	0	<b>1</b>
	2.00%	0.00%	0.00%	0.00%	0.00%	2.00%
<b>Regional Hospitals</b>	5	6	0	0	1	<b>12</b>
	10.00%	12.00%	0.00%	0.00%	2.00%	24.00%
<b>Atoll Hospitals</b>	7	1	1	0	0	<b>9</b>
	14.00%	2.00%	2.00%	0.00%	0.00%	18.00%
<b>Health Centers</b>	0	0	0	0	1	<b>1</b>
	0.00%	0.00%	0.00%	0.00%	2.00%	2.00%
<b>Health Posts</b>	0	0	0	0	0	<b>0</b>
	0.00%	0.00%	0.00%	0.00%	0.00%	0.00%
<b>Others *</b>	0	0	0	0	0	<b>0</b>
	0.00%	0.00%	0.00%	0.00%	0.00%	0.00%
<b>Abroad</b>	0	0	0	0	0	<b>0</b>
	0.00%	0.00%	0.00%	0.00%	0.00%	0.00%
<b>Total</b>	<b>30</b>	<b>15</b>	<b>1</b>	<b>0</b>	<b>4</b>	<b>50</b>
	<b>60.00%</b>	<b>30.00%</b>	<b>2.00%</b>	<b>0.00%</b>	<b>8.00%</b>	

Source: Vital Statistics System, Ministry of Health 2012

\* Includes, on dhoani, home, ambulance, not stated and others

# Includes emergency and unspecified caesareans

~ Includes induced and spontaneous abortion and breech deliveries

TABLE 8B: AVERAGE BIRTH WEIGHT (IN GRAMS) BY SEX, 2010 - 2012

Region		2010			2011			2012		
		Total Births	Live Births	Still Births	Total Births	Live Births	Still Births	Total Births	Live Births	Still Births
Republic	<b>Total</b>	3047	3052	2226	3039	3045	2055	3059	3069	1930
	<b>Male</b>	3090	3094	2259	3071	3088	2111	3393	3103	1969
	<b>Female</b>	3000	3007	1862	3004	3009	1976	3248	3034	1891
Atolls	<b>Total</b>	3058	3062	2575	3042	3048	2044	3055	3061	2105
	<b>Male</b>	3103	3105	2943	3087	3097	1999	3103	3105	3000
	<b>Female</b>	3009	3015	2140	2987	3004	2100	3000	3010	1861
Male'	<b>Total</b>	3037	3044	1936	3038	3045	2062	3065	3074	1720
	<b>Male</b>	3079	3085	2145	3058	3064	2187	3088	3098	1549
	<b>Female</b>	2993	3000	1663	3018	3024	1876	3041	3048	1916

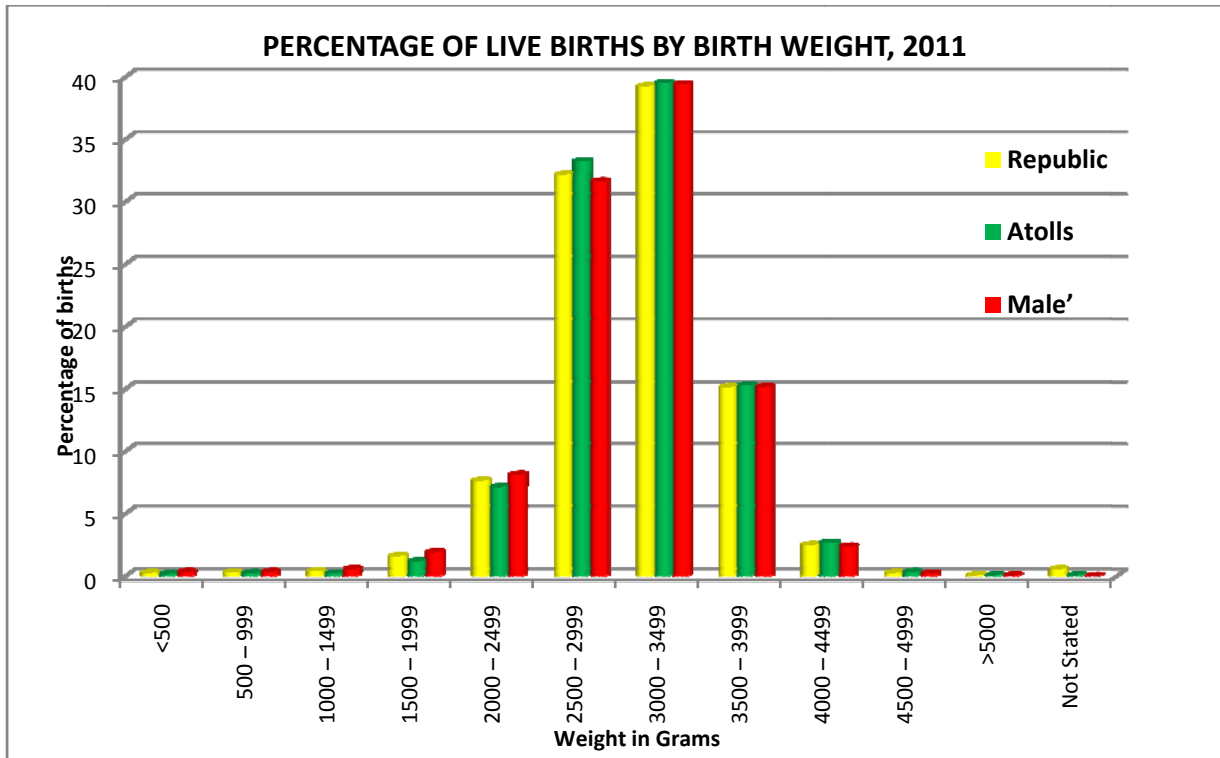
Source: Vital Statistics System, Ministry of Health & Gender 2012

TABLE 9: BIRTH WEIGHT BY CATEGORIES, 2008- 2012

Year	2008	2009	2010	2011	2012
	Number /%	Number /%	Number /%	Number /%	Number /%
<b>Republic</b>					
<b>Low Birth Weight (&lt;2500 grams)</b>	687 9.87%	717 9.78%	697 9.83%	729 10.21%	698 9.78%
<b>Normal (2500-3999 grams)</b>	6063 87.09%	6398 87.31%	6170 87.02%	6214 86.99%	6210 87.05%
<b>High Birth Weight (≥4000 grams)</b>	212 3.05%	213 2.91%	223 3.15%	200 2.80%	226 3.17%
<b>Not Stated</b>	2 0.03%	95 1.28%	0 0.00%	39 0.54%	0 0.00%
<b>Atolls</b>					
<b>Low Birth Weight (&lt;2500 grams)</b>	307 8.49%	360 9.88%	268 8.25%	280 8.88%	253 9.46%
<b>Normal (2500-3999 grams)</b>	3192 88.32%	3170 87.02%	2858 87.97%	2778 88.08%	2315 86.57%
<b>High Birth Weight (≥4000 grams)</b>	115 3.18%	113 3.10%	123 3.79%	96 3.04%	106 3.96%
<b>Not Stated</b>	2 0.06%	95 2.54%	0 0.00%	2 0.06%	0 0.00%
<b>Male'</b>					
<b>Low Birth Weight (&lt;2500 grams)</b>	380 11.35%	357 9.69%	422 11.07%	448 11.23%	445 9.98%
<b>Normal (2500-3999 grams)</b>	2871 85.75%	3228 87.60%	3289 86.30%	3436 86.16%	3895 87.33%
<b>High Birth Weight (≥4000 grams)</b>	97 2.90%	100 2.71%	100 2.62%	104 2.61%	120 2.69%
<b>Not Stated</b>	0 0.00%	0 0.00%	0 0.00%	0 0.00%	0 0.00%

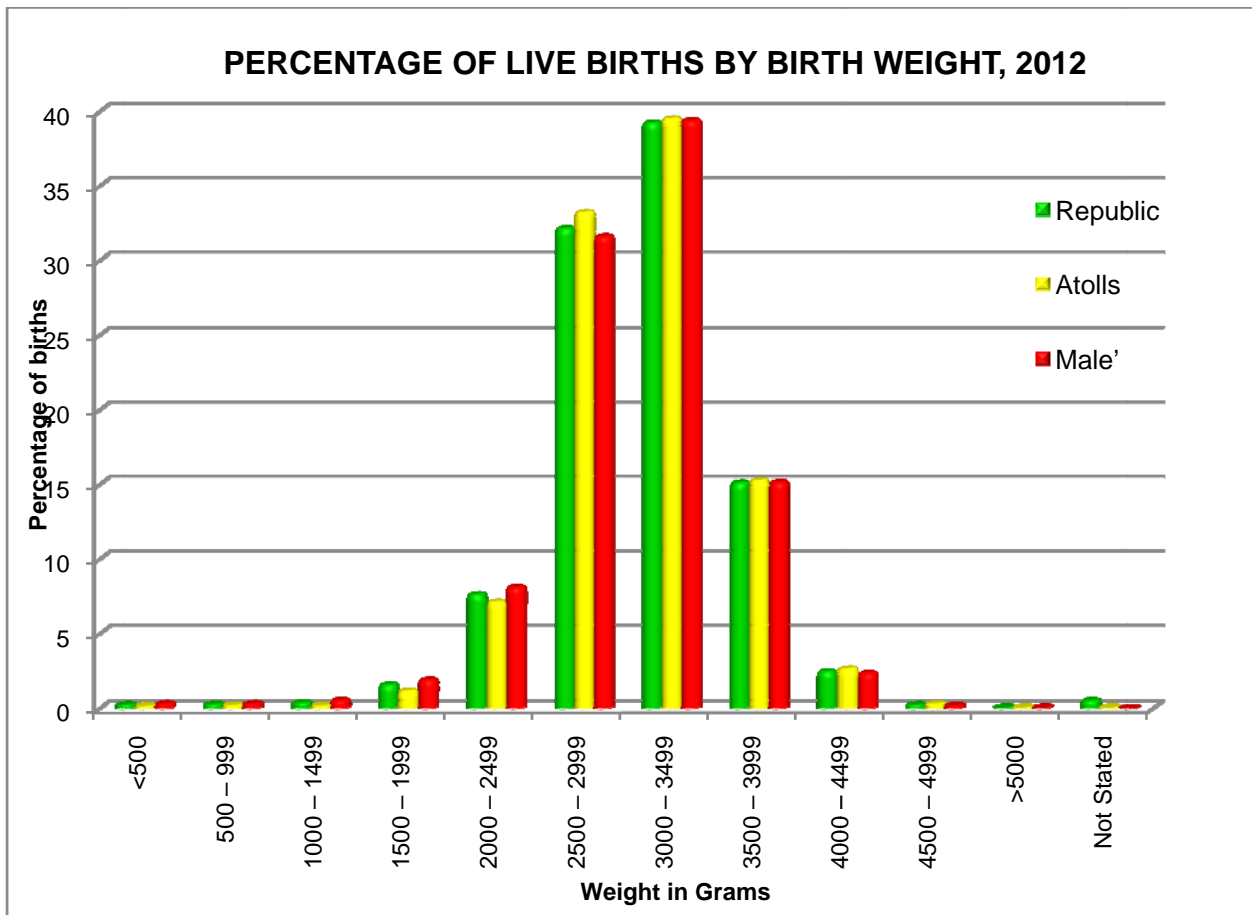
Source: Vital Statistics System, Ministry of Health 2012

PERCENTAGE OF LIVE BIRTHS BY BIRTH WEIGHT, 2011



Source: Vital Statistics System, Ministry of Health 2012

PERCENTAGE OF LIVE BIRTHS BY BIRTH WEIGHT, 2012



Source: Vital Statistics System, Ministry of Health 2012

**TABLE 11: NUMBER AND PERCENTAGES OF LIVE & STILL BIRTHS BY TYPE OF HEALTH PROFESSIONAL ATTENDED- 2011 – 2012**

Health Professional	2011				2012			
	Republic	Male'	Atolls	Abroad	Republic	Male'	Atolls	Abroad
	Number	Number	Number	Number	Number	Number	Number	Number
	%	%	%	%	%	%	%	%
<b>LIVE BIRTHS</b>								
<b>Doctor</b>	5171	2567	2602	2	5036	2764	2272	0
	72.00	64.37%	82.45%	5.26%	67.77	61.97%	84.90%	0.00%
<b>Nurse</b>	1926	1419	507	0	2060	1694	366	0
	26.82%	35.58%	16.06%	0.00%	27.72%	37.98%	13.68%	0.00%
<b>Community Health Worker</b>	0	0	0	0	3	0	3	0
	0.00%	0.00%	0.00%	0.00%	0.04%	0.00%	0.11%	0.00%
<b>Family Health Worker</b>	1	0	1	0	6	0	6	0
	0.01%	0.00%	0.03%	0.00%	0.08%	0.00%	0.22%	0.00%
<b>Traditional Birth Attendant (Foolhuma)</b>	42	0	42	0	22	0	22	0
	0.58%	0.00%	1.33%	0.00%	0.30%	0.00%	0.82%	0.00%
<b>Other</b>	1	0	1	0	3	0	3	0
	0.01%	0.00%	0.03%	0.00%	0.04%	0.00%	0.11%	0.00%
<b>Not stated</b>	41	2	3	36	301	2	4	295
	0.57%	0.05%	0.10%	94.74%	4.05%	0.04%	0.15%	100%
<b>TOTAL</b>	<b>7182</b>	<b>3988</b>	<b>3156</b>	<b>38</b>	<b>7431</b>	<b>4460</b>	<b>2676</b>	<b>295</b>
	<b>100%</b>	<b>100%</b>	<b>100%</b>	<b>100%</b>	<b>100%</b>	<b>100%</b>	<b>100%</b>	<b>100%</b>
<b>STILL BIRTHS</b>								
<b>Doctor</b>	21	15	6	0	31	12	19	0
	48.84	83.33	24.00	0.00%	62.00	40.00	95.00	0.00%
<b>Nurse</b>	22	3	19	0	19	18	1	0
	51.16	16.67	76.00	0.00%	38.00	60.00	5.00	0.00%
<b>Community Health Worker</b>	0	0	0	0	0	0	0	0
	0.00%	0.00%	0.00%	0.00%	0.00%	0.00%	0.00%	0.00%
<b>Family Health Worker</b>	0	0	0	0	0	0	0	0
	0.00%	0.00%	0.00%	0.00%	0.00%	0.00%	0.00%	0.00%
<b>Traditional Birth Attendant (Foolhuma)</b>	0	0	0	0	0	0	0	0
	0.00%	0.00%	0.00%	0.00%	0.00%	0.00%	0.00%	0.00%
<b>Other</b>	0	0	0	0	0	0	0	0
	0.00%	0.00%	0.00%	0.00%	0.00%	0.00%	0.00%	0.00%
<b>Not stated</b>	0	0	0	0	0	0	0	0
	0.00%	0.00%	0.00%	0.00%	0.00%	0.00%	0.00%	0.00%
<b>TOTAL</b>	<b>43</b>	<b>18</b>	<b>25</b>	<b>0</b>	<b>50</b>	<b>30</b>	<b>20</b>	<b>0</b>
	<b>100%</b>	<b>100%</b>	<b>100%</b>	<b>0.00%</b>	<b>100%</b>	<b>100%</b>	<b>100%</b>	<b>0.00%</b>

Source: Vital Statistics System, Ministry of Health, 2012



Health Professional	2011				2012			
	Republic Number %	Male' Number %	Atolls Number %	Abroad Number %	Republic Number %	Male' Number %	Atolls Number %	Abroad Number %
	<b>ALL BIRTHS</b>							
<i>Doctor</i>	5192 71.86%	2573 64.12%	2617 82.45%	2 5.26	5067 67.73%	2776 61.83%	2291 84.98%	0 0.00%
<i>Nurse</i>	1948 26.96%	1438 35.83%	510 16.07%	0 0.00%	2079 27.79%	1712 38.13%	367 13.61%	0 0.00%
<i>Community Health Worker</i>	0 0.00%	0 0.00%	0 0.00%	0 0.00%	3 0.04%	0 0.00%	3 0.11%	0 0.00%
<i>Family Health Worker</i>	1 0.01%	0 0.00%	1 0.03%	0 0.00%	6 0.08%	0 0.00%	6 0.22%	0 0.00%
<i>Traditional Birth Attendant (Foolhuma)</i>	42 0.58%	0 0.00%	42 1.32%	0 0.00%	22 0.29%	0 0.00%	22 0.82%	0 0.00%
<i>Other</i>	1 0.01%	0 0.00%	1 0.03%	0 0.00%	3 0.04%	0 0.00%	3 0.11%	0 0.00%
<i>Not stated</i>	41 0.57%	2 0.05%	3 0.09%	36 94.74%	301 4.02%	2 0.04%	4 0.15%	295 100.00%
<b>TOTAL</b>	<b>7225</b> <b>100%</b>	<b>4013</b> <b>100%</b>	<b>3174</b> <b>100%</b>	<b>38</b> <b>100%</b>	<b>7481</b> <b>100%</b>	<b>4490</b> <b>100%</b>	<b>2696</b> <b>100%</b>	<b>295</b> <b>100%</b>

Source: Vital Statistics System, Ministry of Health 2012

**TABLE 12: NUMBER AND PERCENTAGE OF LIVE BIRTHS BY AGE OF MOTHER, 2009– 2012**

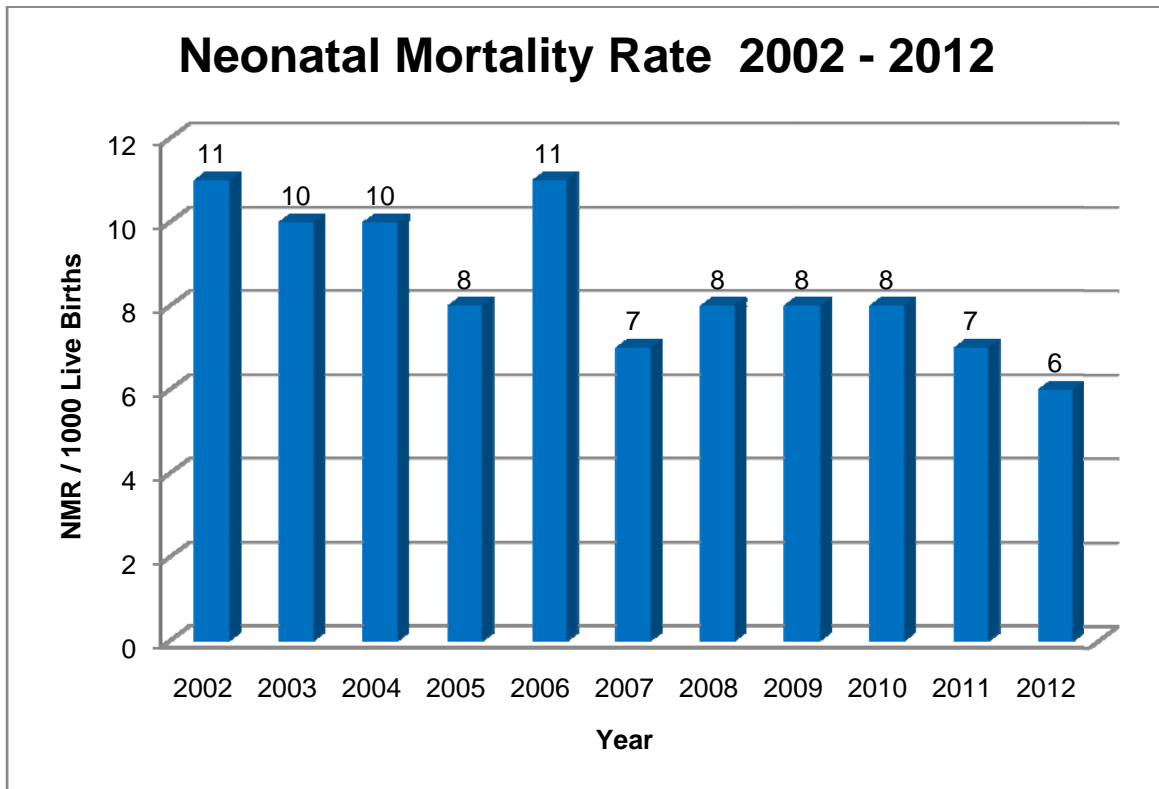
Age group (yrs)	2009	2010	2011	2012
	Number	Number	Number	Number
	%	%	%	%
<b>10-14</b>	1	1	0	0
	0.01%	0.01%	0.00%	0.00%
<b>15-19</b>	343	293	277	242
	4.62%	4.12%	3.9%	3.3%
<b>20-24</b>	2677	2480	2305	2311
	36.06%	34.85%	32.1%	31.1%
<b>25-29</b>	2281	2274	2415	2555
	30.73%	31.965	33.6%	34.4%
<b>30-34</b>	1313	1257	1367	1486
	17.69%	17.66%	19.0%	20.0%
<b>35-39</b>	578	610	679	654
	7.79%	8.59%	9.5%	8.8%
<b>40-44</b>	133	159	124	172
	1.79%	2.23%	1.7%	2.3%
<b>45-49</b>	9	14	8	9
	0.12%	0.20%	0.1%	0.1%
<b>&gt;50</b>	0	0	3	0
	0.00%	0.00%	0.04%	0.00%
<b>Not Stated</b>	88	27	4	2
	1.19%	0.38%	0.1%	0.0%
<b>TOTAL</b>	<b>7423</b>	<b>7115</b>	<b>7182</b>	<b>7431</b>
	<b>100%</b>	<b>100%</b>	<b>100%</b>	<b>100%</b>

Source: Vital Statistics System, Ministry of Health 2012

# *Mortality*

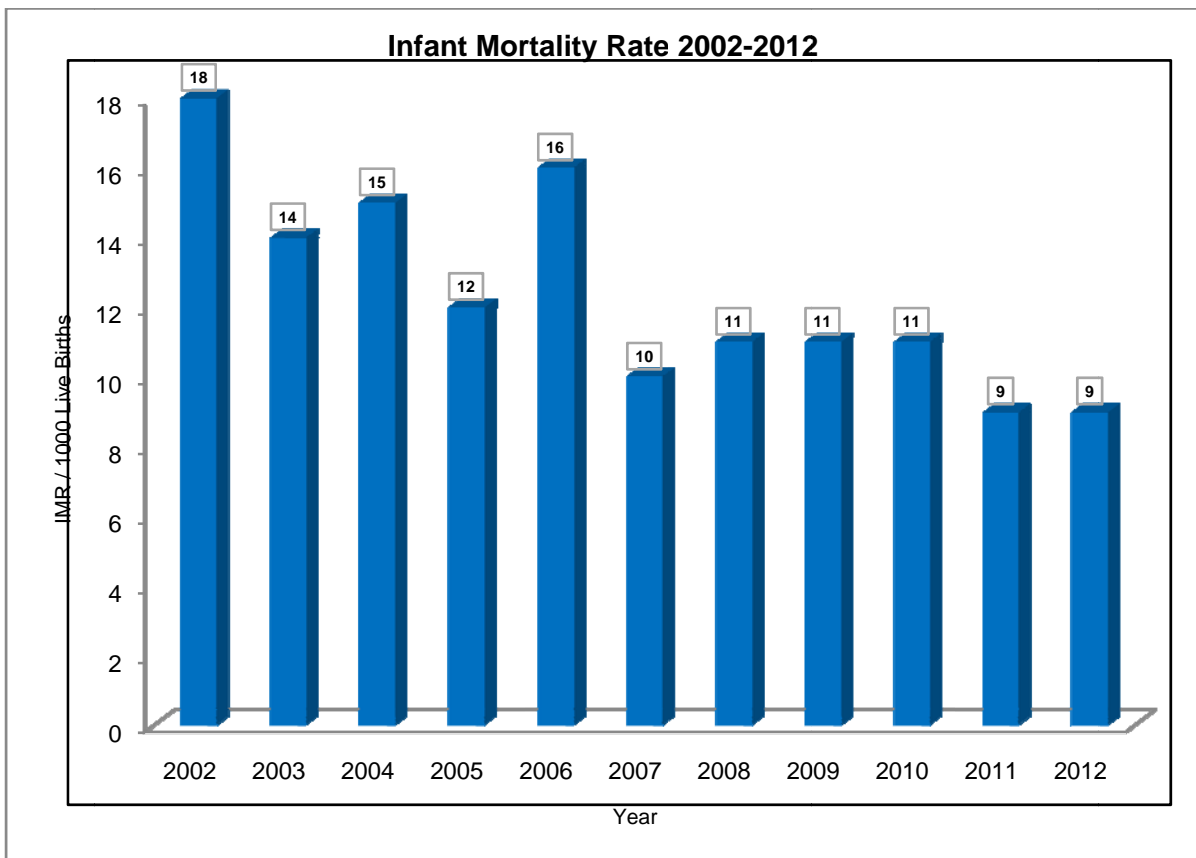
## MORTALITY

GRAPH 6: NEONATAL MORTALITY RATE PER 1000 LIVE BIRTHS 2002-2012



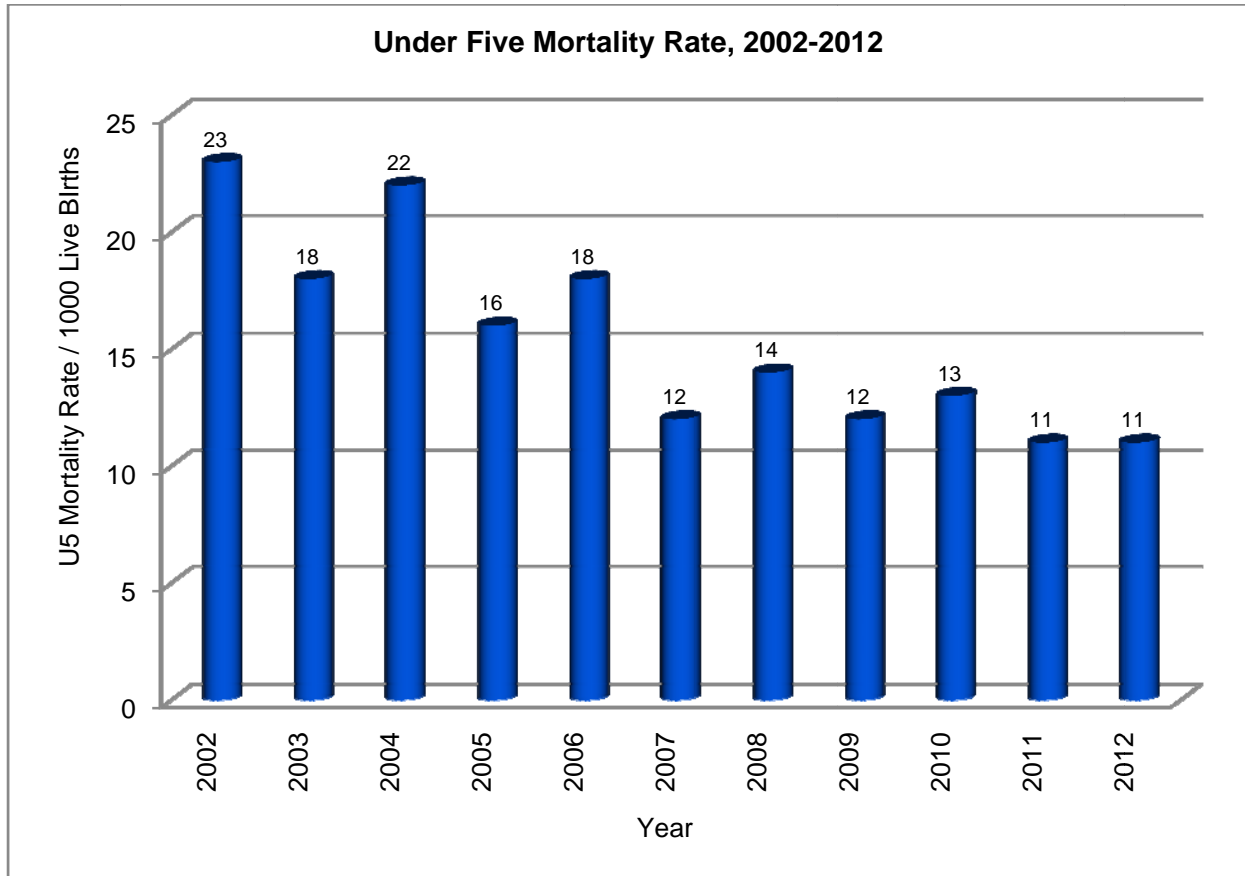
Source: Vital Statistics System, Ministry of Health 2012

GRAPH 7: INFANT MORTALITY RATE PER 1000 LIVE BIRTHS 2002 - 2012



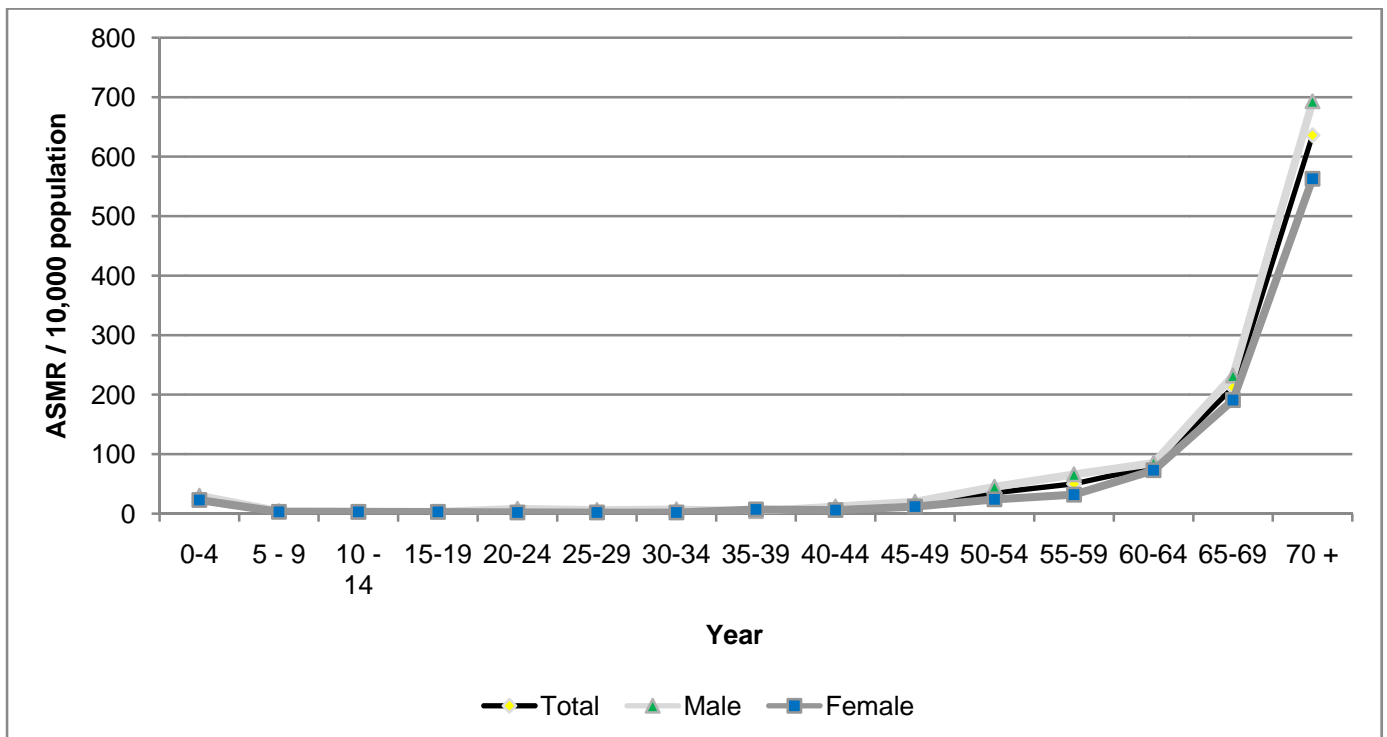
Source: Vital Statistics System, Ministry of Health 2012

GRAPH 8: UNDER FIVE MORTALITY RATE PER 1000 LIVE BIRTHS 2002- 2012



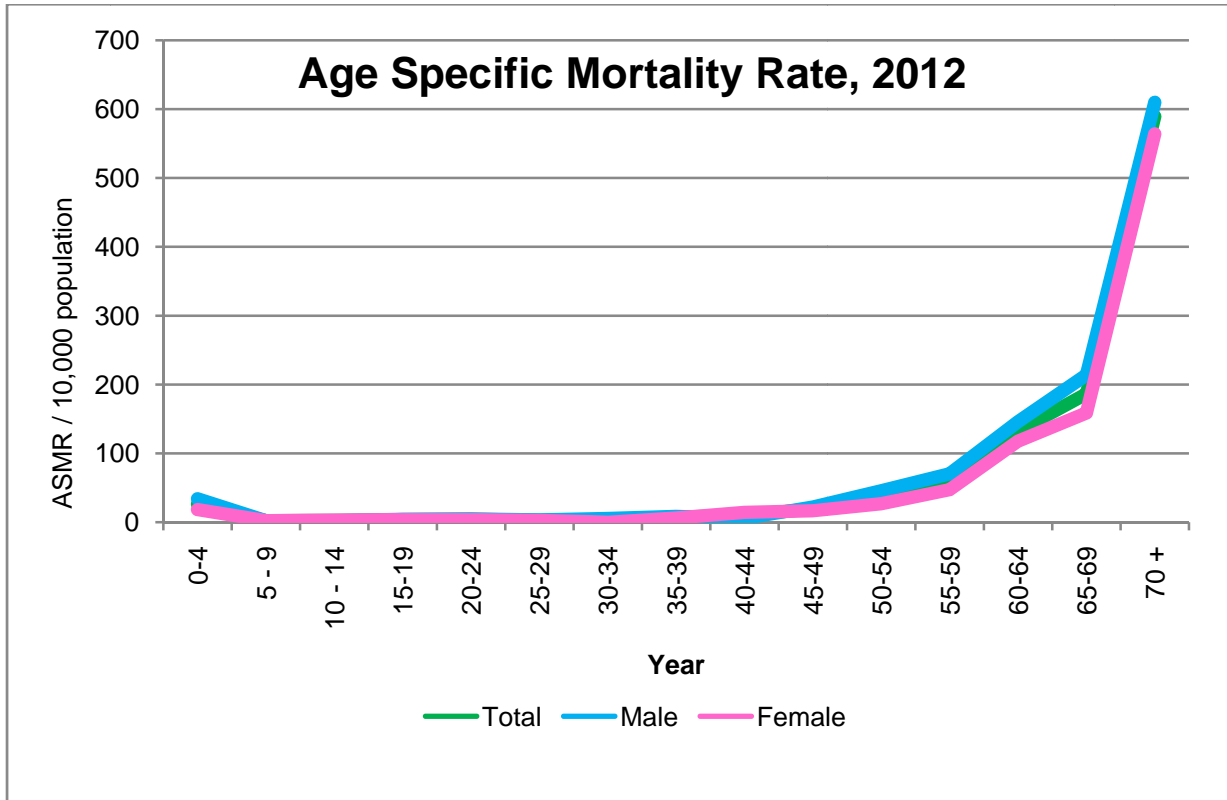
Source: Vital Statistics System, Ministry of Health 2012

GRAPH 9: AGE SPECIFIC MORTALITY RATE PER 10,000 POPULATION, 2011



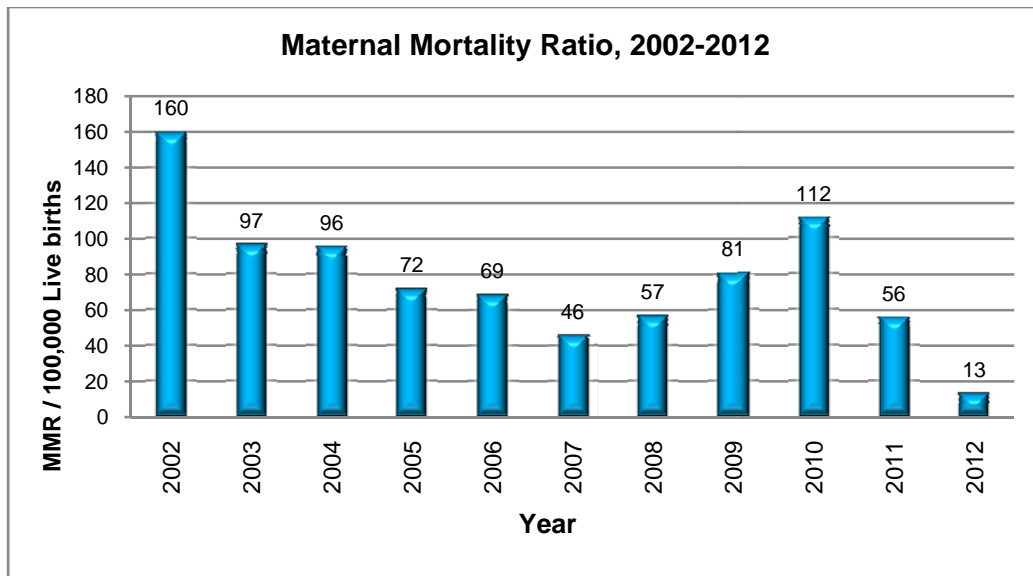
Source: Vital Statistics System, Ministry of Health, 2012

GRAPH 10: AGE SPECIFIC MORTALITY RATE PER 10,000 POPULATION, 2012



Source: Vital Statistics System, Ministry of Health 2012

GRAPH 11: MATERNAL MORTALITY RATIO PER 100,000 LIVE BIRTHS, 2002- 2012



Source: Vital Statistics System, Ministry of Health 2012

**TABLE 13: CRUDE DEATH RATE PER 1000 POPULATION, 2002 - 2012**

Year	Republic		
	Total	Male	Female
2002	4	5	3
2003	4	4	3
2004	3	4	3
2005	3	4	3
2006 *	4	4	3
2007	4	4	3
2008	3	4	3
2009	4	4	3
2010	3	4	3
2011	3	4	3
2012	3	4	3

Source: Vital Statistics System, Ministry of Health 2012

**TABLE 14: STILL BIRTH RATE PER 1000 LIVE BIRTHS, 2002 - 2012**

Year	Republic			Atolls			Male'		
	Total	Male	Female	Total	Male	Female	Total	Male	Female
2002	11	10	12	12	9	15	9	11	8
2003	11	11	11	13	15	12	8	5	11
2004	9	8	10	9	7	11	9	9	9
2005	7	7	8	10	9	10	5	5	6
2006	10	12	8	10	10	10	10	13	6
2007	9	10	8	11	11	11	7	9	5
2008	8	7	9	6	5	8	10	10	10
2009	7	8	5	8	9	7	6	8	4
2010	7	7	6	8	9	7	6	6	5
2011	7	7	6	7	8	7	6	6	6
2012	7	6	7	7	6	10	7	7	6

Source: Vital Statistics System, Ministry of Health 2012

**TABLE 15: INFANT MORTALITY RATE PER 1000 LIVE BIRTHS BY SEX, 2002 - 2012**

Year	Republic			Atolls			Male'		
	Total	Male	Female	Total	Male	Female	Total	Male	Female
2002	18	19	16	19	18	21	15	21	9
2003	14	15	13	18	17	18	8	13	3
2004	15	16	13	18	17	19	10	14	6
2005	12	11	13	12	14	10	12	8	16
2006	16	18	13	18	21	15	13	14	12
2007	10	14	6	11	15	6	9	12	6
2008	11	10	11	10	9	11	12	12	12
2009	11	11	11	8	7	9	14	16	13
2010	11	12	10	10	9	12	11	15	7
2011	9	10	8	6	8	5	10	10	11
2012	9	10	7	7	6	8	10	13	7

Source: Vital Statistics System, Ministry of Health 2012

**TABLE 16: UNDER FIVE MORTALITY RATE PER 1000 LIVE BIRTHS BY SEX, 2002 - 2012**

Year	Republic			Atolls			Male'		
	Total	Male	Female	Total	Male	Female	Total	Male	Female
2002	23	22	23	26	21	31	18	24	11
2003	18	22	15	24	27	21	10	14	4
2004	22	23	21	30	28	31	11	16	7
2005	16	14	17	18	18	17	13	10	18
2006	18	21	16	22	25	19	14	16	12
2007	12	15	8	13	17	9	10	13	6
2008	14	13	14	14	13	16	13	14	12
2009	12	12	12	10	8	11	15	17	13
2010	13	14	11	14	12	15	11	15	7
2011	11	12	10	10	12	8	11	11	12
2012	11	14	8	11	12	10	12	16	8

Source: Vital Statistics System, Ministry of Health 2012



**TABLE 17: MATERNAL MORTALITY RATIO PER 100,000 LIVE BIRTHS, 2002 - 2012**

Year	Number of deaths	MMR per 100,000 live births
2002	8	160
2003	5	97
2004	5	96
2005	4	72
2006	4	69
2007	3	46
2008	4	57
2009	6	81
2010	8	112
2011	4	56
2012	1	13

Source: Vital Statistics System, Ministry of Health 2012

**TABLE 18: NEONATAL DEATH RATE PER 1000 LIVE BIRTHS, 2002 - 2012**

Year	Early Neonatal Death Rate (0-6 Days)			Late Neonatal Death Rate (7-27 days)			Neonatal Death Rate (0-27 days)		
	Total	Male'	Atolls	Total	Male'	Atolls	Total	Male'	Atolls
2002	9	9	9	2	2	2	11	11	12
2003	9	3	18	1	1	1	10	3	19
2004	9.01	6.06	11.07	0.96	1.40	0.65	9.97	7.46	11.73
2005	7.22	7.73	6.82	1.08	0.41	1.62	8.31	8.14	8.44
2006	8.75	7.02	10.26	2.75	3.69	1.92	11.50	10.71	12.18
2007	6.23	5.18	7.16	0.91	1.62	0.29	7.15	6.80	7.45
2008	5.89	5.38	6.36	2.15	2.99	1.38	8.04	8.36	7.74
2009	6.87	9.5	4.28	0.54	1.09	0.00	7.95	11.67	4.28
2010	6.18	6.3	6.16	1.97	2.89	0.62	8.15	9.18	6.77
2011	5.71	6.52	4.12	1.11	1.76	0.00	6.82	8.27	4.12
2012	4.44	4.93	4.11	1.48	2.02	0.37	5.92	6.95	4.48

Source: Vital Statistics System, Ministry of Health 2012

TABLE 19: PERINATAL AND POSTNATAL DEATH RATE PER 1000 LIVE BIRTHS, 2002 - 2012

Year	Perinatal Death Rate (Neonatal deaths + Still Births)			Post Neonatal Death Rate (28-364 days)			Infant Mortality Rate (0-365 days)		
	Total	Male'	Atolls	Total	Male'	Atolls	Total	Male'	Atolls
2002	21	18	23	6	4	8	18	15	19
2003	21	8	41	4	2	9	14	8	18
2004	19	17	21	5	2	6	15	10	18
2005	16	13	18	4	4	4	12	12	12
2006	21	20	22	4	3	6	16	13	18
2007	16	14	18	3	2	3	10	9	11
2008	16	19	14	3	3	2	11	12	10
2009	15	18	12	3	2	3	11	14	8
2010	15	15	15	3	2	3	11	11	10
2011	13	14	11	2	2	2	9	10	6
2012	13	13	12	3	3	2	9	10	7

Source: Vital Statistics System, Ministry of Health 2012

TABLE 20: AGE SPECIFIC MORTALITY RATE PER 10,000 POPULATION, 2010 - 2012

Year	2010			2011			2012		
	Total	Male	Female	Total	Male	Female	Total	Male	Female
0-4	30	33	27	26	30	23	26	34	18
5-9	3	4	2	3	4	3	2	2	2
10-14	4	5	3	3	3	3	3	2	4
15-19	5	7	4	3	3	3	4	4	3
20-24	5	8	3	5	8	2	4	5	4
25-29	4	6	3	4	6	2	3	3	3
30-34	6	9	4	5	7	2	3	5	0
35-39	4	5	4	6	4	7	7	9	6
40-44	11	10	11	9	12	6	10	5	14
45-49	17	24	9	16	20	12	19	22	17
50-54	37	40	34	35	45	24	36	46	27
55-59	70	80	59	50	66	32	59	70	47
60-64	129	174	82	79	85	73	132	146	118
65-69	227	256	196	212	232	191	187	214	159
70 +	568	589	540	636	693	563	589	610	564

Source: Vital Statistics System, Ministry of Health 2012

**TABLE 21: TOTAL NUMBER OF DEATHS BY SEX, 2002 - 2012**

Year	Republic			Atolls			Male'		
	Total	Male	Female	Total	Male	Female	Total	Male	Female
<b>2002</b>	1113	656	457	766	442	318	347	208	139
<b>2003</b>	1026	591	435	729	410	319	297	181	116
<b>2004</b>	1015	582	433	721	406	315	294	176	118
<b>2005</b>	1027	615	412	700	431	269	327	184	143
<b>2006</b>	1084	649	435	730	438	292	354	211	143
<b>2007</b>	1123	687	436	751	465	286	372	222	150
<b>2008</b>	1070	629	441	680	400	280	390	229	161
<b>2009</b>	1163	675	488	458	265	193	179	108	71
<b>2010</b>	1105	660	445	611	356	255	458	279	179
<b>2011</b>	1137	686	451	615	381	234	468	272	196
<b>2012</b>	1135	656	479	555	310	245	564	333	231

Source: Vital Statistics System, Ministry of Health 2012

Note: Republic total includes deaths occurred abroad

TABLE 22A: TOTAL NUMBER OF DEATHS BY AGE, 2008 - 2012

Year	2008			2009			2010			2011			2012		
	Total	Male	Female	Total	Male	Female	Total	Male	Female	Total	Male	Female	Total	Male	Female
<1	76	38	38	65	37	39	78	45	33	65	37	28	66	40	26
1-4	20	10	10	16	9	5	11	5	6	16	9	7	18	15	3
5-9	12	6	6	9	5	5	8	6	2	9	5	4	6	3	3
10-14	11	7	4	10	5	5	12	8	4	10	5	5	8	3	5
15-19	19	14	5	11	5	3	21	14	7	11	5	6	14	8	6
20-24	24	14	10	22	17	7	21	16	5	22	17	5	18	10	8
25-29	7	4	3	14	10	6	15	10	5	14	10	4	11	6	5
30-34	20	12	8	12	9	5	15	10	5	12	9	3	7	7	0
35-39	14	9	5	12	4	6	9	5	4	12	4	8	16	9	7
40-44	17	7	10	17	11	8	19	9	10	17	11	6	19	5	14
45-49	35	22	13	26	16	16	26	19	7	26	16	10	32	18	14
50-54	38	27	11	47	31	22	47	26	21	47	31	16	52	33	19
55-59	41	25	16	39	27	14	50	30	20	39	27	12	52	32	20
60-64	63	36	27	45	25	17	72	50	22	45	25	20	77	44	33
65-69	124	71	53	110	61	65	120	69	51	110	61	49	95	55	40
70+	549	327	222	682	414	265	581	338	243	682	414	268	644	368	276
Not Stated	0	0	0	0	0	0	0	0	0	0	0	0	0	0	0
<b>TOTAL</b>	<b>1070</b>	<b>629</b>	<b>441</b>	<b>1137</b>	<b>686</b>	<b>488</b>	<b>1,105</b>	<b>660</b>	<b>445</b>	<b>1137</b>	<b>686</b>	<b>451</b>	<b>1135</b>	<b>656</b>	<b>479</b>

Source: Vital Statistics System, Ministry of Health 2012

**TABLE 23B: TWENTY LEADING CAUSES OF DEATH FOR ALL AGES, 2011**

<b>ICD</b>	<b>CAUSE</b>	<b>MALE</b>	<b>FEMALE</b>	<b>TOTAL</b>
<b>I30–I52</b>	Other forms of heart disease	76	54	130
<b>I20–I25</b>	Ischaemic heart diseases	82	31	113
<b>I60–I69</b>	Cerebrovascular diseases	72	36	108
<b>J40–J47</b>	Chronic lower respiratory diseases	39	41	80
<b>I10–I15</b>	Hypertensive diseases	36	43	79
<b>C00–C75</b>	Malignant neoplasms, stated or presumed to be primary, of specified sites, except of lymphoid, haematopoietic and related tissue	50	28	78
<b>W00–X59</b>	Other external causes of accidental injury	24	13	37
<b>E10–E14</b>	Diabetes mellitus	18	18	36
<b>N17–N19</b>	Renal failure	16	12	28
<b>R50–R69</b>	General symptoms and signs	14	10	24
<b>P20–P29</b>	Respiratory and cardiovascular disorders specific to the perinatal period	12	7	19
<b>R00–R09</b>	Symptoms and signs involving the circulatory and respiratory systems	13	5	18
<b>J95–J99</b>	Other diseases of the respiratory system	13	4	17
<b>C76–C80</b>	Malignant neoplasms of ill-defined, secondary and unspecified sites	6	10	16
<b>J80–J84</b>	Other respiratory diseases principally affecting the interstitium	6	9	15
<b>I26–I28</b>	Pulmonary heart disease and diseases of pulmonary circulation	8	6	14
<b>A30–A49</b>	Other bacterial diseases	4	8	12
<b>K90–K93</b>	Other diseases of the digestive system	6	6	12
<b>A90–A99</b>	Arthropod-borne viral fevers and viral haemorrhagic fevers	9	2	11

Source: Vital Statistics System, Ministry of Health 2012

**TABLE 23B: TWENTY LEADING CAUSES OF DEATH FOR ALL AGES, 2012**

ICD	CAUSE	MALE	FEMALE	TOTAL
I30–I52	Other forms of heart disease	80	68	148
I60–I69	Cerebrovascular diseases	74	37	111
I20–I25	Ischaemic heart diseases	70	28	98
I10–I15	Hypertensive diseases	44	41	85
J40–J47	Chronic lower respiratory diseases	30	27	57
E10–E14	Diabetes mellitus	19	20	39
A30–A49	Other bacterial diseases	17	17	34
R50–R69	General symptoms and signs	15	15	30
J95–J99	Other diseases of the respiratory system	19	8	27
N17–N19	Renal failure	14	9	23
R00–R09	Symptoms and signs involving the circulatory and respiratory systems	10	10	20
C15–C26	Malignant neoplasms of digestive organs	12	6	18
W65–W74	Accidental drowning and submersion	13	4	17
C30–C39	Malignant neoplasms of respiratory and intrathoracic organs	10	6	16
J60–J70	Lung diseases due to external agents	7	8	15
J80–J84	Other respiratory diseases principally affecting the interstitium	8	7	15
K70–K77	Diseases of liver	10	5	15
E70–E90	Metabolic disorders	7	7	14
P20–P29	Respiratory and cardiovascular disorders specific to the perinatal period	9	4	13

Source: Vital Statistics System, Ministry of Health 2012

**TABLE 24: DEATHS BY AGE GROUP FOR THALASSAEMICS, 2002 - 2012**

<b>Year</b>	<b>6-11 months</b>	<b>1 – 4 years</b>	<b>5-9 years</b>	<b>10-14 years</b>	<b>15-19 years</b>	<b>20 and above</b>	<b>Total</b>
<b>2002</b>	0	4	0	2	3	0	<b>9</b>
<b>2003</b>	0	1	1	1	0	0	<b>3</b>
<b>2004</b>	0	0	2	0	1	0	<b>3</b>
<b>2005</b>	0	0	0	1	0	0	<b>1</b>
<b>2006</b>	0	0	0	2	4	0	<b>6</b>
<b>2007</b>	0	0	0	3	5	0	<b>8</b>
<b>2008</b>	0	1	1	2	4	0	<b>8</b>
<b>2009</b>	0	0	1	2	2	0	<b>5</b>
<b>2010</b>	0	0	1	1	3	0	<b>5</b>
<b>2011</b>	1	0	0	2	4	0	<b>7</b>
<b>2012</b>	0	1	0	1	2	2	<b>6</b>

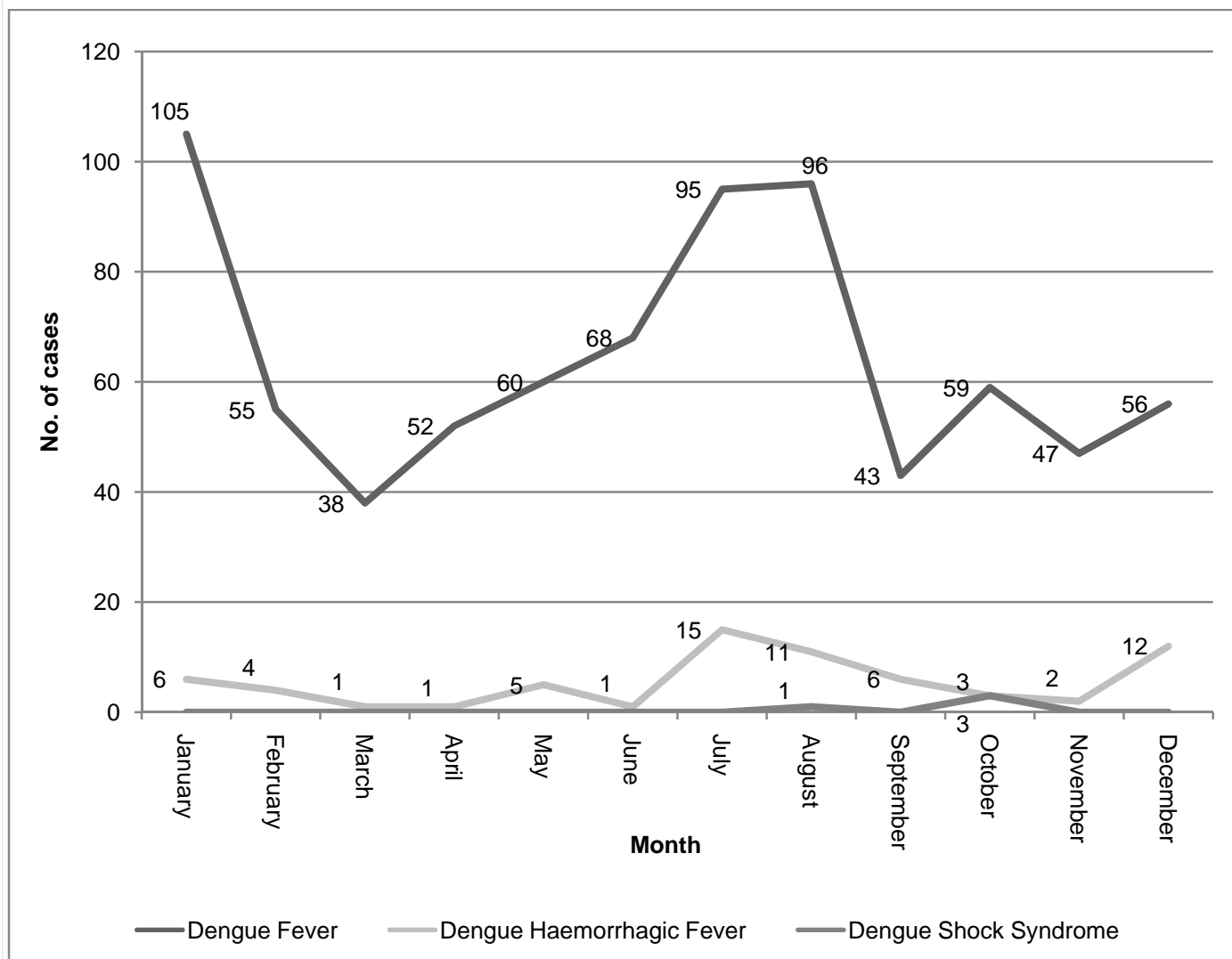
Source: Maldivian Blood Services , 2012

# *Morbidity*



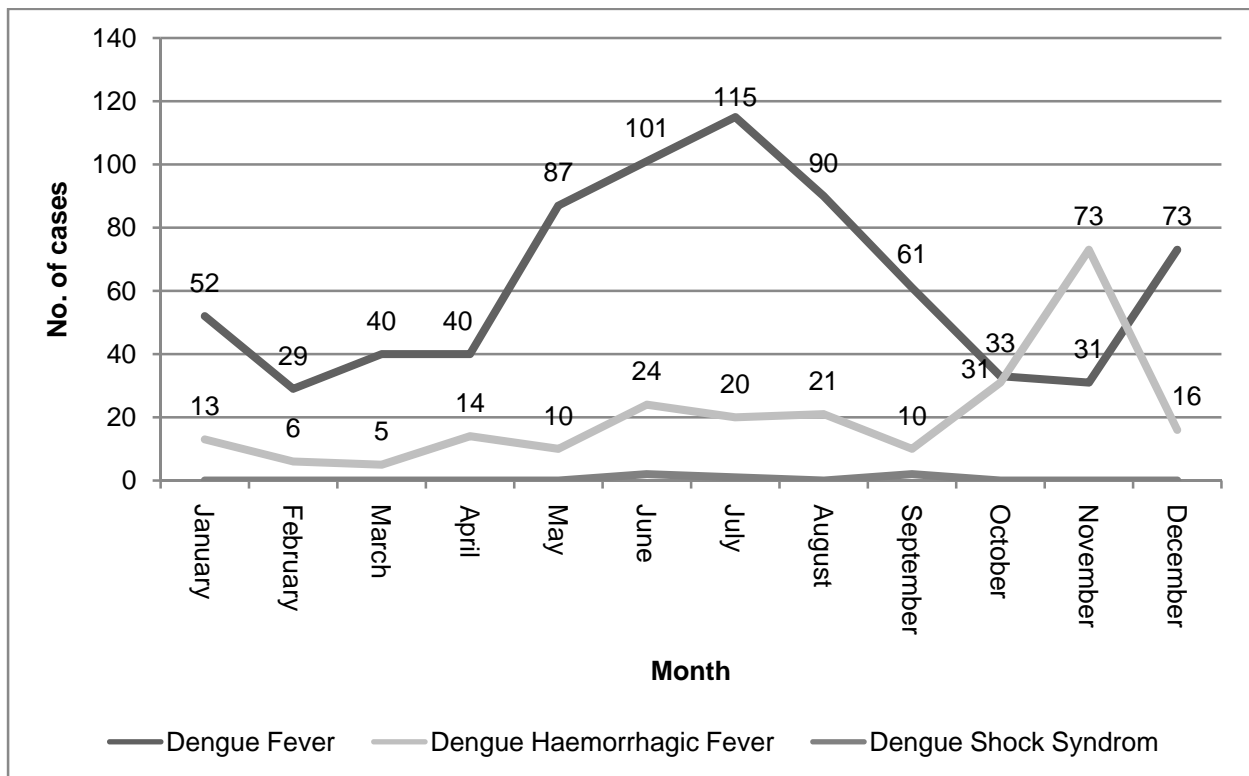
## MORBIDITY

GRAPH 12A: NUMBER OF DENGUE FEVER, DENGUE HAEMORRHAGIC FEVER & DENGUE SHOCK SYNDROME CASES 2009



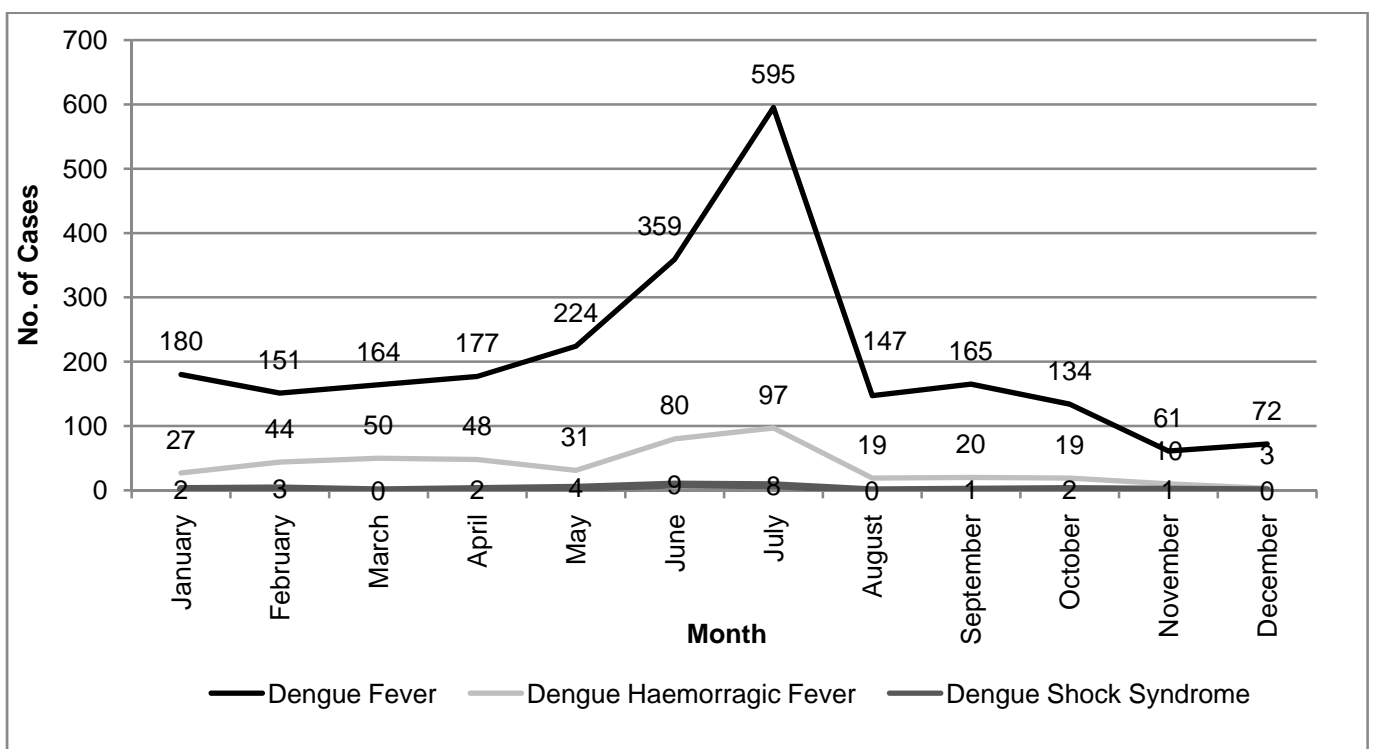
Source: Health Protection Agency 2012

**GRAPH 12B: NUMBER OF DENGUE FEVER, DENGUE HAEMORRHAGIC FEVER & DENGUE SHOCK SYNDROME CASES 2010**



Source: Health Protection Agency 2012

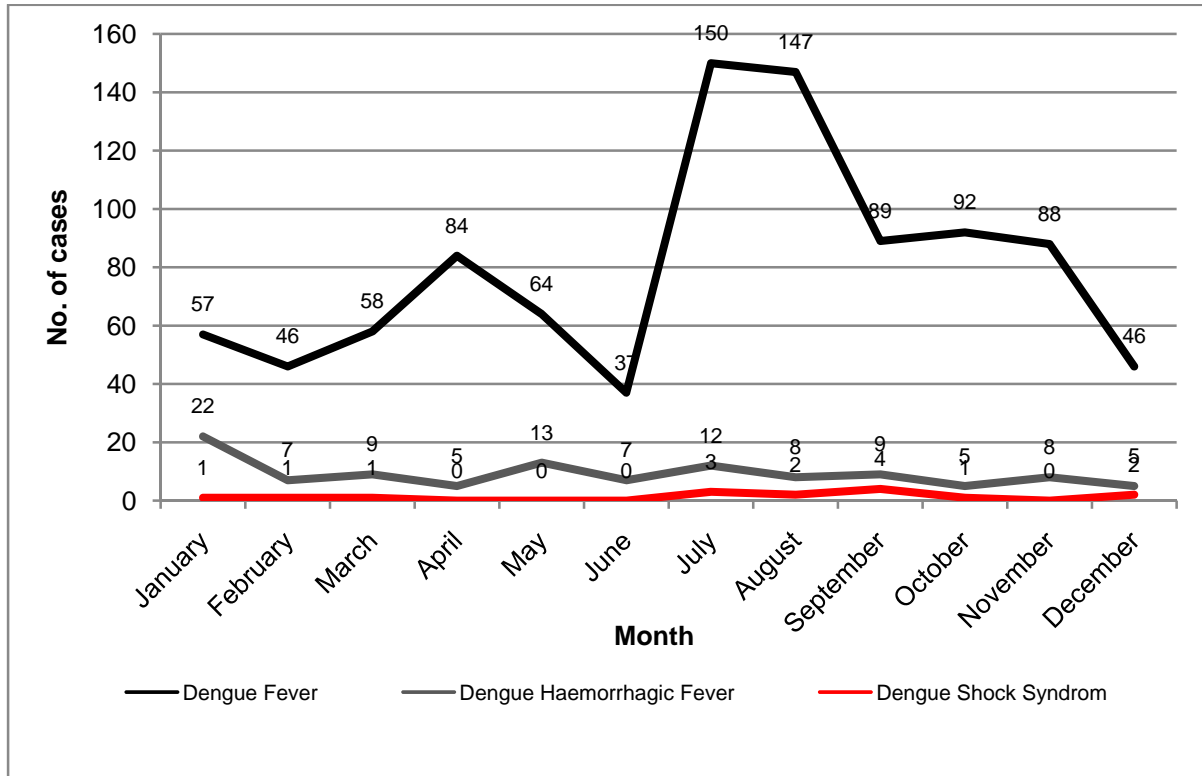
**GRAPH 12C: NUMBER OF DENGUE FEVER, DENGUE HAEMORRHAGIC FEVER & DENGUE SHOCK SYNDROME CASES 2011**



Source: Health Protection Agency 2012

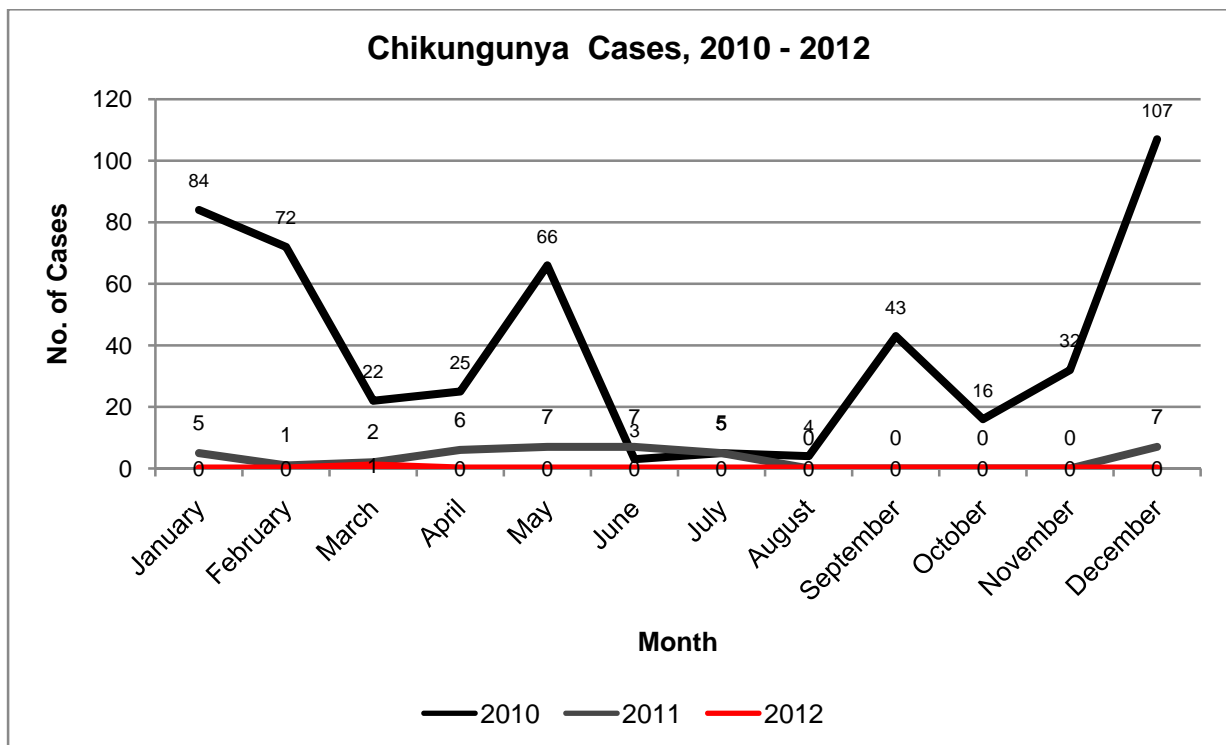
**GRAPH 12D: NUMBER OF DENGUE FEVER, DENGUE HAEMORRHAGIC FEVER & DENGUE SHOCK SYNDROME CASES 2012**

**SYNDROME CASES 2012**



Source: Health Protection Agency 2012

**GRAPH 15: NUMBER OF CHIKUNGUNYA CASES 2010- 2012**



Source: Health Protection Agency 2012

**TABLE 25: PREVALENCE AND INCIDENCE OF TUBERCULOSIS, 2002 - 2012**

Year	Total cases under treatment	Incidence Rate /'000 sputum positive	Incidence Rate /'000 sputum negative	Prevalence Rate /'000 sputum positive	Prevalence Rate /'000 sputum negative
2002	60	0.23	0.23	0.09	0.13
2003	82	0.26	0.25	0.14	0.16
2004	69	0.26	0.18	0.14	0.11
2005	80	0.26	0.19	0.14	0.16
2006	68	0.19	0.14	0.12	0.11
2007	95	0.21	0.22	0.16	0.16
2008	60	0.19	0.23	0.09	0.11
2009	37	0.5	0.18	0.07	0.06
2010	33	0.14	0.19	0.06	0.05
2011	51	0.15	0.13	0.09	0.07
2012	52	0.17	0.27	0.19	0.27

Source: Health Protection Agency 2012

**TABLE 26: PREVALENCE AND INCIDENCE LEPROSY, 2002 - 2012**

Year	Total cases under treatment	Number of new cases	Incidence Rate /'000	Prevalence Rate /'000
2002	19	29	0.1	0.07
2003	6	20	0.07	0.02
2004	5	8	0.03	0.02
2005	10	15	0.06	0.04
2006	6	8	0.03	0.02
2007	13	11	0.04	0.04
2008	5	6	0.02	0.02
2009	6	10	0.04	0.02
2010	12	7	0.02	0.04
2011	6	14	0.04	0.02
2012	12	7	0.02	0.04

Source: Health Protection Agency 2012

**TABLE 27: INCIDENCE AND CASE FATALITY RATES FOR DIARRHOEA, 2002 - 2012**

Year	Number of new cases	Incidence Rate /'000 population.	Case fatality Rate /'000 population.
2002	17,350	65.23	...
2003	13,854	51.00	0.07
2004	13,598	49.67	0.07
2005	23,199	79.06	0.00
2006	19,593	72.08	0.00
2007	12,120	40.54	...
2008	12,656	42.33	...
2009	17,096	40.54	...
2010	18,509	61.14	...
2011	18979	58.40	0.003
2012	22690	67.04	0.004

Source: Health Protection Agency 2012

Note: ... Data not available

**TABLE 28: HIV STATUS IN MALDIVES, 2002 - 2012**

Year	Total Screened	HIV Positive New Cases (Maldivians)	HIV Positive New Cases (Expatriates)
2002	41,200	0	11
2003	45,739	1	13
2004	50,279	1	24
2005	49,623	0	21
2006	47,752	0	27
2007	40,238	0	25
2008	29,931	1	15
2009	27,753	0	16
2010	49,495	0	21
2011	31,016	1	18
2012	42844	3	24

Source: Health Protection Agency 2012

**TABLE 29: VACCINATION COVERAGE IN THE MALDIVES, 2002 - 2012**

Year	BCG	DPT3	Polio 3	Measles	Tetanus	Hepatitis B 3
2002	98.50%	97.50%	97.50%	96.90%	94.00%	97.50%
2003	98%	97.50%	97.50%	96.00%	95.00%	97.50%
2004	98%	96%	96%	97%	95%	97%
2005	99%	98%	98%	97%	92%	98%
2006	99%	98%	98%	97%	94%	98%
2007	99%	98%	99%	97%	95%	98%
2008	99%	98%	98%	97%	95%	98%
2009	99%	98%	98% (4 <sup>th</sup> )	98%	85%	98%
2010	97%	96%	98% (4 <sup>th</sup> )	97%	90% (5 <sup>th</sup> )	97%
2011	98%	96%	96%	95%	94% (3 <sup>rd</sup> )	96%
2012	99.6%	99.6%	98.9%	98.4%	99.2%	99.1%

Source: Health Protection Agency 2012

**TABLE 30: SEXUALLY TRANSMITTED INFECTIONS – SYPHILIS STATUS, 2008– 2012**

Year	2008	2009	2010	2011	2012
<b>Syphilis Screened (Ante-Natal Clinic)</b>	1548	1648	5833	1641	2691
<b>Syphilis Positive (Ante-Natal Clinic)</b>	0	1	0	3	0
<b>Syphilis Screened (Blood donors)</b>	1755	3308	3815	3719	6627
<b>Syphilis Positive (Blood donors)</b>	1	0	0	1	0

Source: Health Protection Agency 2012

**TABLE 31: SEXUALLY TRANSMITTED INFECTIONS BY SYMPTOMATIC DIAGNOSIS, 2008- 2012**

Year	2008	2009	2010	2011	2012
<b>Male urethral discharge</b>	36	38	58	8	16
<b>Female vaginal discharge</b>	765	800	1583	395	502
<b>Male genital ulcer</b>	10	9	13	4	1
<b>Female genital ulcer</b>	15	37	29	31	5
<b>TOTAL</b>	<b>826</b>	<b>884</b>	<b>1683</b>	<b>426</b>	<b>524</b>

Source: Health Protection Agency 2012

**TABLE 32: CASES OF DENGUE FEVER BY MONTH, 2007 - 2012**

Month/Year	2007	2008	2009	2010	2011	2012
<i>January</i>	276	99	105	52	180	57
<i>February</i>	91	74	55	29	151	46
<i>March</i>	25	94	38	40	164	58
<i>April</i>	38	133	52	40	177	84
<i>May</i>	97	220	60	87	224	64
<i>June</i>	187	304	68	101	359	37
<i>July</i>	239	185	95	115	595	150
<i>August</i>	143	125	96	90	147	147
<i>September</i>	114	135	43	61	165	89
<i>October</i>	130	73	59	33	134	92
<i>November</i>	83	94	47	31	61	88
<i>December</i>	69	81	56	73	72	46
<b>TOTAL</b>	<b>1492</b>	<b>1617</b>	<b>774</b>	<b>752</b>	<b>2429</b>	<b>958</b>

Source: Health Protection Agency 2012

**TABLE 33: CASES OF DENGUE HAEMORRAGIC FEVER BY MONTH, 2007- 2012**

Month/Year	2007	2008	2009	2010	2011	2012
<i>January</i>	9	10	6	13	27	22
<i>February</i>	3	13	4	6	44	7
<i>March</i>	1	6	1	5	50	9
<i>April</i>	2	19	1	14	48	5
<i>May</i>	3	30	5	10	31	13
<i>June</i>	25	36	1	24	80	7
<i>July</i>	32	25	15	20	97	12
<i>August</i>	24	27	11	21	19	8
<i>September</i>	19	16	6	10	20	9
<i>October</i>	7	5	3	31	19	5
<i>November</i>	14	10	2	73	10	8
<i>December</i>	22	4	12	16	3	5
<b>TOTAL</b>	<b>161</b>	<b>201</b>	<b>67</b>	<b>243</b>	<b>448</b>	<b>110</b>

Source: Health Protection Agency 2012

**TABLE 34: CASES OF DENGUE SHOCK SYNDROME BY MONTH, 2007- 2012**

Month/Year	2007	2008	2009	2010	2011	2012
January	1	0	0	0	2	1
February	0	0	0	0	3	1
March	0	0	0	0	0	1
April	0	2	0	0	2	0
May	1	0	0	0	4	0
June	1	1	0	2	9	0
July	7	2	0	1	8	3
August	2	0	1	0	0	2
September	2	1	0	2	1	4
October	2	0	3	0	2	1
November	2	0	0	0	1	0
December	0	0	0	0	0	2
<b>TOTAL</b>	<b>18</b>	<b>6</b>	<b>4</b>	<b>5</b>	<b>32</b>	<b>15</b>

Source: Health Protection Agency 2012

**TABLE 35: CASES OF CHIKUNGUNYA BY MONTH, 2008 - 2012**

Month/Year	2008	2009	2010	2011	2012
January	122	305	84	5	0
February	78	58	72	1	0
March	36	61	22	2	1
April	17	144	25	6	0
May	12	43	66	7	0
June	5	72	3	7	0
July	182	149	5	5	0
August	97	118	4	0	0
September	37	53	43	0	0
October	212	53	16	0	0
November	357	7	32	0	0
December	559	11	107	7	0
<b>TOTAL</b>	<b>1,714</b>	<b>1,074</b>	<b>479</b>	<b>40</b>	<b>1</b>

Source: Health Protection Agency 2012

Note: Chikungunya reporting started in December 2006



**TABLE 36: THALASSAEMIA MAJOR DEATH AND NEW CASES IN THE MALDIVES, 2001 - 2012**

Year	Total Thalassaemia cases registered *	NEW CASES		
		Republic	Male'	Atolls
2001	469	38	4	34
2002	501	32	5	27
2003	525	24	5	19
2004	553	28	3	25
2005	579	26	9	17
2006	604	25	2	23
2007	632	28	8	20
2008	669	37	7	30
2009	694	25	4	21
2010	716	22	3	19
2011	747	31	3	28
2012	769	22	6	16

Source: National Thalassaemia Centre, 2012

Note: This table shows cases Registered at NTC

**TABLE 37: THALASSAEMIA MAJOR CHILDREN IN THE MALDIVES, 2006 - 2012**

Year	Total number registered	Total number of Thalassaemic Major living children	Patient taking treatment at NTC	Patient taking treatment in atolls	Total number of children undergone bone marrow transplant
2006	604	449	277	172	6*
2007	632	469	281	188	9*
2008	669	498	286	212	2*
2009	694	518	289	229	5*
2010	716	535	288	247	1
2011	747	559	288	271	3
2012	769	574	345	229	1

Source: National Thalassaemia Centre, 2012

\*Revised figures

**TABLE 38: PERCENTAGE OF THALASSAMIA CASES AMONG TOTAL SCREENED BY  
CLASSIFICATION, 2004- 2012**

<b>Classification</b>	<b>2004</b>	<b>2005</b>	<b>2006</b>	<b>2007</b>	<b>2008</b>	<b>2009</b>	<b>2010</b>	<b>2011</b>	<b>2012</b>
<i>B- Thalassaemia Major</i>	0.37	0.45	0.60	1.12	0.38	0.16	0.08	0.10	0.04
<i>B- Thalassaemia Non-carrier</i>	52.73	40.91	37.46	41.61	35.65	51.07	52.96	37.57	40.40
<i>B- Thalassaemia carrier</i>	18.98	18.46	19.18	15.74	17.53	16.66	16.03	16.65	16.34
<i>A- Thalassaemia carrier</i>	0.54	3.09	4.85	2.03	5.77	1.4	0	0.00	0.00
<i>Hb-E B Thalassaemia</i>	0.12	0.04	0.20	0.20	0.03	0.11	0.04	0.06	0.02
<i>E- Homozygous</i>	0	0	0	0	0	0	0.04	0.02	0.02
<i>Homozygous - D</i>	*	*	*	*	*	*	*	0.02	0.04
<i>Hb-E Trait</i>	1	1.21	0.75	0.88	0.91	0.75	0.36	0.62	0.84
<i>Hb-D Trait</i>	0.54	0.36	0.75	0.32	0.44	0.46	0.16	0.40	0.40
<i>Hb Sickle B- Thalassaemia</i>	0	0.04	0	0	0	0	0	0.00	0.00
<i>Hb S Trait</i>	0.25	0.36	1.15	0.12	0.06	0.16	0.08	0.10	0.17
<i>Iron Deficiency</i>	2.29	4.66	3.70	2.87	2.48	3.52	0.12	0.02	1.53
<i>Inconclusive</i>	9.40	12.86	10.44	3.51	8.09	15.1	24.64	35.54	31.95
<b>Total screened</b>	<b>2403</b>	<b>2232</b>	<b>2002</b>	<b>2509</b>	<b>3189</b>	<b>3722</b>	<b>2496</b>	<b>4972</b>	<b>5220</b>

Source: National Thalassaemia Centre, 2012

Note: this table shows data from the Thalassaemia screening programme at NTC

\* No Screening was done

# *Human Resources*

TABLE 39: DISTRIBUTION OF MEDICAL STAFF IN MALE' AND ATOLLS BY SEX, 2010

	Republic			Male'			Atolls		
	Total	Male	Female	Total	Male	Female	Total	Male	Female
<b>Doctors</b>	<b>525</b>	<b>434</b>	<b>91</b>	<b>219</b>	<b>142</b>	<b>77</b>	<b>306</b>	<b>292</b>	<b>14</b>
<b>General Practitioners</b>	330	288	42	106	67	39	224	221	3
<b>Specialists</b>	195	146	49	113	75	38	82	71	11
<b>Nurses</b>	<b>1868</b>	<b>71</b>	<b>1,797</b>	<b>660</b>	<b>63</b>	<b>597</b>	<b>1,208</b>	<b>8</b>	<b>1,200</b>
<b>Paramedical Staff</b>	<b>629</b>	<b>381</b>	<b>248</b>	<b>358</b>	<b>194</b>	<b>164</b>	<b>271</b>	<b>187</b>	<b>84</b>
<b>Laboratory technicians<sup>1</sup></b>	276	107	169	141	27	114	135	80	55
<b>Physiotherapists</b>	22	15	7	14	9	5	8	6	2
<b>Radiographers</b>	52	39	13	31	22	9	21	17	4
<b>Dentist<sup>2</sup></b>	32	10	22	27	7	20	5	3	2
<b>Pharmacists / Pharmacy Asst.*</b>	247	210	37	145	129	16	102	81	21
<b>Community Health Personnel</b>	<b>805</b>	<b>180</b>	<b>625</b>	<b>2</b>	<b>0</b>	<b>2</b>	<b>803</b>	<b>180</b>	<b>623</b>
<b>Community Health Workers</b>	278	126	152	2	0	2	276	126	150
<b>Family Health Workers</b>	313	54	259	0	0	0	313	54	259
<b>Traditional Birth Attendant (Foolhuma)</b>	<b>214</b>	<b>0</b>	<b>214</b>	<b>0</b>	<b>0</b>	<b>0</b>	<b>214</b>	<b>0</b>	<b>214</b>
<b>Trained</b>	214	0	214	0	0	0	214	0	214
<b>Untrained</b>	0	0	0	0	0	0	0	0	0

Source: Ministry of Health 2012

<sup>1</sup> - includes laboratory technicians, laboratory assistants, food technologists and microbiologists

<sup>2</sup> - dentists, dental mechanics and dental hygienists

Note: only ADK and IMDC contributed to private sector data.

**TABLE 40: DISTRIBUTION OF MEDICAL PERSONNEL BY LOCALS AND EXPATRIATES, 2010**

Type of Health Professional	PUBLIC SECTOR				TOTAL PUBLIC SECTOR		TOTAL PRIVATE SECTOR ^		GRAND TOTAL
	MALE'		ATOLLS		Expat	Local	Expat	Local	
	Expat	Local	Expat	Local					
<b>General Practitioners</b>	58	39	218	6	276	45	4	5	<b>330</b>
<b>Doctors (Specialists)</b>	44	45	82	0	126	45	22	2	<b>195</b>
<b>Nurse</b>	342	264	639	569	981	833	44	10	<b>1868</b>
<b>Lab. Technicians<sup>1</sup></b>	28	109	94	41	122	150	3	1	<b>276</b>
<b>Physiotherapists</b>	11	0	8	0	19	0	3	0	<b>22</b>
<b>Radiographers</b>	14	9	21	0	35	9	6	2	<b>52</b>
<b>Dentists<sup>2</sup></b>	1	18	4	1	5	19	1	7	<b>32</b>
<b>Pharmacists / Pharmacy Asst *</b>	0	0	0	0	0	0	177	70	<b>247</b>
<b>Community Health Workers</b>	0	2	0	276	0	278	NA	NA	<b>278</b>
<b>Family Health Workers</b>	0	0	0	313	0	313	NA	NA	<b>313</b>
<b>Traditional Birth Attendant (Foolhuma)</b>	0	0	0	214	0	214	NA	NA	<b>214</b>
<b>TOTAL</b>	<b>498</b>	<b>486</b>	<b>1066</b>	<b>1420</b>	<b>1564</b>	<b>1906</b>	<b>260</b>	<b>97</b>	<b>3827</b>

Source: Ministry of Health 2012

^ Pvt.sector includes ADK and IMDC only

<sup>1</sup> - includes laboratory technicians, laboratory assistants, food technologists and microbiologists

<sup>2</sup> - dentists, dental mechanics and dental hygienists

Note: only ADK and IMDC contributed to private sector data.

# *Health Care Finance*

## HEALTH CARE FINANCE

**TABLE 41A: NATIONAL HEALTH ACCOUNTS – SELECTED RATIO\* INDICATORS FOR EXPENDITURES ON HEALTH2011**

A. SELECTED RATIO INDICATORS* FOR EXPENDITURES ON HEALTH	2011
<i>I. Expenditure Ratios</i>	
Total expenditure on health (THE) as % of GDP	9.2
General government expenditure on health (GGHE) as % of GDP	4.1
External resources on health as % of THE	<b>3.3</b>
General government expenditure on health (GGHE) as % of THE	44.0
Private expenditure on health (PvtHE) as % of THE	52.7
Out of pocket expenditure as % of THE	49.4
GGHE as % of General government expenditure	9.5
Social security funds as % of GGHE	19.6
Private insurance as % of PvtHE	6.5
Out of pocket expenditure as % of PvtHE	93.6
Non-profit institutions expenditure on health as % of PvtHE	0.3
Total expenditure on hospitals as % of THE	28.0
Hospitals financed by General government % of GGHE	63.6
Services of curative and rehabilitative care % THE	66.5
Government expenditure on services of curative and rehabilitative care % GGHE	60.0
Government expenditure on ancillary services to health % GGHE	0.2
Prevention and public health services % THE	5.4
Government expenditure on prevention and public health services % GGHE	5.9
Administration and health insurance % THE	10.7
Government expenditure on health administration and health insurance % GGHE	21.9
Total expenditure on pharmaceuticals as % of THE	17.0
Private expenditure on pharmaceuticals as % of PvtHE	19.7
Government compensation of health employees as % of GGHE	5.8
Gross fixed capital formation % THE	1.3
General government gross fixed capital formation as % of GGHE	2.4
<i>I. Selected per capita indicators for expenditures on health</i>	
Total expenditure on health / capita at exchange rate	561
General government expenditure on health / cap x-rate	247

Source: NHA Survey, Ministry of Health, 2011

\* These ratios and per capita levels are automatically derived using the aggregate figures in Section B

TABLE 41B: NATIONAL HEALTH ACCOUNTS – HEALTH SYSTEM EXPENDITURE & FINANCING, 2011

<b>B. VALUES UNDERLYING RATIOS AND LEVELS</b>	<b>2011</b>
<b>HEALTH EXPENDITURE DATA</b>	
<i>Financing sources – rest of the world / External resources</i>	91
<i>Total expenditure on health</i>	2,767
<i>General government expenditure on health</i>	1,217
<i>Territorial governments</i>	812
<i>Central government</i>	471
<i>Ministry of Health</i>	220
<i>Social security funds</i>	251
<i>Parastatal corporations</i>	68
<i>Private expenditure on health</i>	1,342
<i>Private insurance</i>	92
<i>Non-profit institutions serving households (e.g. NGOs)</i>	5
<i>Out of pocket expenditure</i>	1,250
<i>Corporations (other than health insurance)</i>	68
<i>Compensation of health employees</i>	161
<i>Of which : government</i>	161
<i>pharmaceuticals</i>	470
<i>Pharmaceuticals: private expenditure</i>	278
<i>Capital formation : public facilities</i>	31
<i>Hospitals financed by general government</i>	774
<i>Services of curative and rehabilitative care</i>	1,848
<i>General government to services of curative and rehabilitative care</i>	731
<i>Ancillary services to health care</i>	3
<i>General government to ancillary services to health care</i>	3
<i>Prevention and public health services</i>	150
<i>General government to prevent and public health services</i>	44
<i>Administration and health insurance (total)</i>	295
<i>General government to health administration and health insurance</i>	280
<b>MACRO DATA</b>	
<i>Gross Domestic Product</i>	29,936
<i>Final consumption expenditure of Households and Non-profit institutions serving households</i>	5,595
<i>Households final consumption</i>	5,595
<i>General government expenditure</i>	12,824
<i>Exchange Rate (NCU per US\$)</i>	15.42
<i>Population</i>	320

Source: NHA Survey, Ministry of Health, 2011



**TABLE 42: ALLOCATIONS AND EXPENDITURE OF GOVERNMENT BUDGET ON HEALTH SECTOR,  
2004–2012**

<b>Year</b>	<b>Total GDP at Constant basic prices (in million Rf)</b>	<b>Total GDP at Current basic prices (in million Rf)</b>	<b>Public health exp. (% of Total GDP)</b>	<b>GDP growth rates</b>	<b>Health expenditure as % of national Budget</b>
<b>2004</b>	13,767.80	13,678.00	3.1	7.5	11.3
<b>2005</b>	12,489.00	12,704.00	4.1	8.6	8.7
<b>2006</b>	14,936.00	16,683.00	4.1	16.8	9.7
<b>2007</b>	16,512.00	19,737.00	4.0	27.2	9.4
<b>2008</b>	18,526.00	24,213.00	5.5	62.3	12.8
<b>2009</b>	17,853.00	25,403.40	5.6	14.2	12.6
<b>2010</b>	19,113.20	27,316.50	3.7	1.3	9.0
<b>2011</b>	20,351.00	31,583.70	1.3	1.0	3.1
<b>2012</b>	20,621.80	32,469.40		1.0	

Source: Department of National Planning, 2012

Revised table

# *Social Protection*

## SOCIAL PROTECTION

**TABLE 43: NUMBER OF PERSONS COVERED UNDER DIFFERENT SOCIAL PROTECTION SCHEMES  
BY ATOLL, 2012**

Locality	Total	Health Insurance schemes	Single Parent Allowance		Foster Parent Allowance		Emergency Medical Welfare	Disability Allowance
		Aasandha	Parent	Children	Parent	Children		
Republic	289,055	275,175	3,025	5,520	44	52	831	4,408
Male'	48,816	45,101	937	1,606	12	15	200	945
Atolls	240,239	230,074	2,088	3,914	32	37	631	3463
HA	17,949	17,245	134	242	2	2	46	278
HDh	21,172	20,231	217	389	2	2	28	303
Sh	13,822	13,242	105	182	1	1	33	258
N	12,630	12,126	103	182	3	3	40	173
R	17,680	16,919	155	305	3	3	28	267
B	11,444	11,035	80	134	3	3	32	157
Lh	10,815	10,426	78	127	0	0	51	133
K	9,334	8,820	120	233	2	3	15	141
AA	6,365	6,080	59	117	0	0	15	94
ADh	8,717	8,410	40	69	3	5	24	166
V	1598	1560	8	11	0	0	0	19
M	5,938	5,769	33	61	0	0	12	63
F	4,875	4,685	31	65	0	0	8	86
Dh	6,131	5,889	57	100	2	2	9	72
Th	12,760	12,417	68	124	2	2	31	116
L	13,487	12,892	139	268	0	0	14	174
GA	11,749	11,203	90	197	1	1	48	209
GDh	17,395	16,547	174	343	2	2	78	249
Gn	10,099	9,494	138	263	4	5	14	181
S	26,279	25,084	259	502	2	3	105	324

Source: National Social Protection Agency, 2012

**TABLE 44: GOVERNMENT EXPENDITURE ON DIFFERENT SOCIAL PROTECTION SCHEMES BY TYPE, 2012**

Month	Total	Aasandha	Single Parent Allowance	Foster Parent Allowance	Emergency Medical Welfare	Disability Allowance
<b>Total</b>	969,924,892.82	782,126,477.00	62,959,000.00	648,500.00	14,510,915.82	109,680,000.00
<b>January</b>	73,295,024.00	61,453,464.00	4,682,000.00	41,500.00	18,060.00	7,100,000.00
<b>February</b>	89,199,546.07	72,125,326.00	5,404,000.00	60,000.00	36,220.07	11,574,000.00
<b>March</b>	92,411,240.03	81,612,739.00	1,634,000.00	49,000.00	147,501.03	8,968,000.00
<b>April</b>	77,541,955.95	70,798,940.00	5,267,000.00	50,000.00	376,015.95	1,050,000.00
<b>May</b>	96,979,307.86	70,874,690.00	9,092,000.00	15,000.00	809,617.86	16,188,000.00
<b>June</b>	84,859,518.15	69,886,634.00	5,327,000.00	38,000.00	871,884.15	8,736,000.00
<b>July</b>	72,093,470.39	66,491,344.00	3,592,000.00	57,500.00	980,626.39	972,000.00
<b>August</b>	62,388,975.49	50,356,408.00	1,668,000.00	0.00	1,106,567.49	9,258,000.00
<b>September</b>	89,347,534.47	60,259,852.00	10,467,000.00	120,000.00	1,238,682.47	17,262,000.00
<b>October</b>	69,550,675.00	55,017,547.00	3,721,000.00	70,000.00	1,316,128.00	9,426,000.00
<b>November</b>	75,025,669.41	57,641,126.00	6,857,000.00	73,500.00	950,043.41	9,504,000.00
<b>December</b>	87,231,976.00	65,608,407.00	5,248,000.00	74,000.00	6,659,569.00	9,642,000.00

Source: National Social Protection Agency, 2011

Note: Madhana plus expenditure includes of only medical expenditure abroad ie from India and Srilanka.  
 "All the expenditures of madhana and madhana plus are the expenditures are based on the claims approved.  
 Total madhana expenditure"

**TABLE 45: EXPENDITURE ON ELECTRICITY SUBSIDY MALE', 2011-2012**

Month	No. of Households		Total Expenditure (MVR)	
	2011	2012	2011	2012
<b>Total</b>	188957	237035	162,828,114.16	249,768,103.05
<b>January</b>	13828	18448	5,991,574.02	16,241,186.13
<b>February</b>	13973	18752	7,006,150.74	16,236,949.93
<b>March</b>	14118	18955	8,594,709.77	19,734,226.19
<b>April</b>	14339	19216	11,379,902.27	21,819,287.13
<b>May</b>	14703	19500	14,222,947.97	20,194,573.96
<b>June</b>	15283	19773	14,988,565.71	19,212,565.37
<b>July</b>	15897	19992	15,542,391.54	21,257,866.91
<b>August</b>	16459	20166	16,716,160.38	23,152,349.69
<b>September</b>	16943	20369	17,181,948.87	23,158,927.82
<b>October</b>	17538	20507	18,260,447.02	23,234,616.15
<b>November</b>	17804	20638	17,630,859.52	22,063,582.95
<b>December</b>	18072	20719	15,312,456.35	23,461,970.82

**TABLE 46: EXPENDITURE ON MADHANA SERVICES BY TYPE OF INSTITUTION AND ATOLL, 2012**

Locality	Total	Hospitals	Pharmacies	Clinics	Opticals	Others
<b>Republic</b>	782,126,477.00	489,577,981.00	164,518,581.00	21,704,802.00	14,876,749.00	22,925,989.00
<b>Male'</b>	517,366,338.00	301,390,314.00	88,423,560.00	21,704,802.00	14,399,298.00	22,925,989.00
<b>Atolls</b>	264,760,139.00	188,187,667.00	76,095,021.00	-	477,451.00	-
<b>Abroad (India, Sri Lanka)</b>	68,522,375.00					

Source: National Social Protection Agency 2012 ,

Note: These expenditures are based on the blocked amount

**TABLE 47: EXPENDITURE ON PERSONS COVERED UNDER MADHANA POLICIES  
BY TYPE OF SERVICE, 2012**

<b>Type of Service</b>	<b>Total Expenditure (MVR)</b>
<b>Total</b>	<b>937,199,146.53</b>
<i>Out-patient care</i>	542,798,715.00
<i>In-patient care</i>	186,005,894.00
<i>In ICU</i>	-
<i>Admitted in ward</i>	-
<i>Out-patient medicine</i>	138,378,283.00
<i>In-patient medicine</i>	26,140,297.00
<i>Circumcision</i>	5,238,819.22
<i>Inter-atoll transport for critical patients</i>	18,017,991.00
<i>Moved to Male'</i>	-
<i>Moved to regional hospitals</i>	-
<i>Dialysis</i>	4,318,216.00
<i>Medical check-up</i>	-
<i>Glases / lenses</i>	14,872,749.00
<i>Crutch</i>	-
<i>Walking aid</i>	-
<i>Wheel chair</i>	-
<i>Hearing aid</i>	-
<i>Others</i>	-
<i>Joint / ligament related</i>	1,428,182.31

*Source: National Social Protection Agency, 2012*

*Data from National Health  
Laboratory*

## DATA FROM NATIONAL HEALTH LABORATORY

### *WATER MICROBIOLOGY*

This includes different types of water samples (rain, desalinated, sea, sewage, well..Etc) received to National health laboratory from resorts, private companies/factories, Government, and MFDA for microbiological testing.

### *WATER CHEMISTRY*

This includes different types of water samples (rain, desalinated, sea, sewage, well...Etc) received to National health laboratory from resorts, private companies/factories, Government, and MFDA for chemical testing.

### *FOOD CHEMISTRY*

This includes different types of food samples received to National health laboratory from resorts, private companies/factories, Government, and MFDA for chemical testing

This includes different types of food samples (fish and fishery products, cooked, raw, dairy products ...etc) received to national health laboratory from resorts, private companies/factories, Government, and MFDA fro microbiological testing.

*TABLE 48: FOOD MICROBIOLOGY*

	Resort	private	Government	MFDA
<i>Water Microbiology Samples</i>	2242	1225	147	71
<i>Food Microbiology Samples</i>	972	1070	0	265
<i>Water Chemistry Samples</i>	1369	1692	58	59
<i>Food Chemistry Samples</i>	5	67	5	409

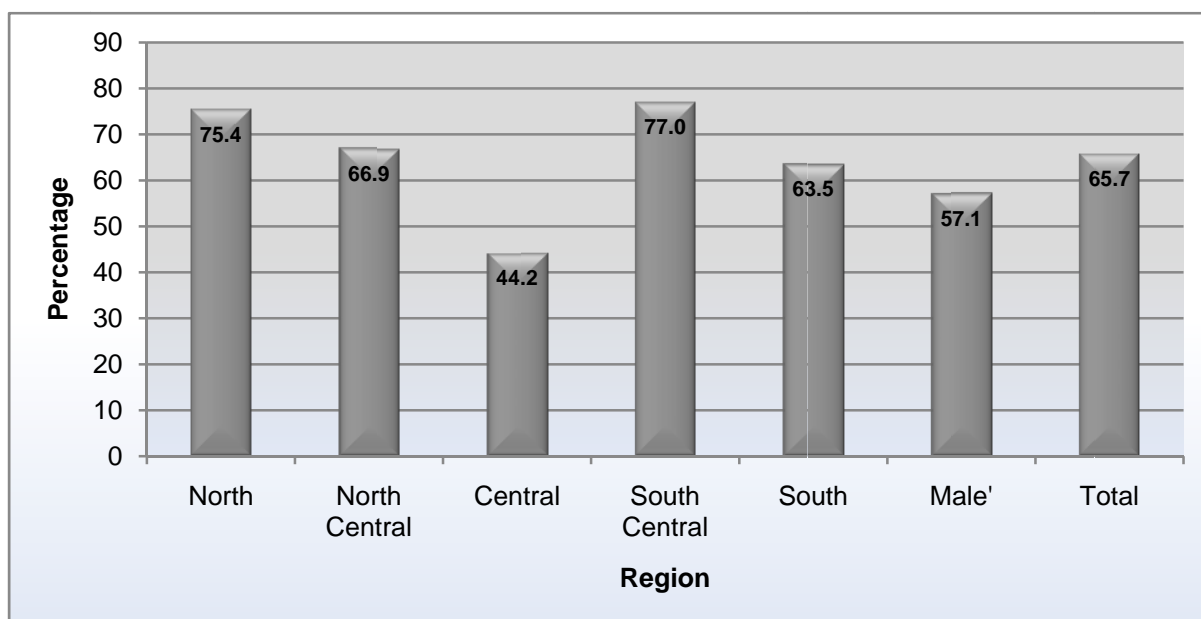
Source: National Health Laboratory, 2012



# *Data From Surveys*

## DATA FROM SURVEYS

GRAPH 19: PROPORTION OF UNDER-FIVE CHILDREN WHO HAVE RECEIVED VITAMIN A IN THE PAST 6



MONTHS BY REGION

Source: National Micronutrient Survey 2007.

TABLE 49B: DEWORMIN AND VITAMIN-A DATA - 2012

Atoll/School	Vitamin A			Deworming		
	1st rnd	2nd rnd	Total	1st rnd	2nd rnd	Total
	9-13 years			9-13 years		
HA	2389	2913	5302	1837	2313	4150
HDH	3902	3464	7366	2526	2880	5406
SH	3465	3291	6756	2647	2634	5281
N	2201	2253	4454	1559	1573	3132
R	3970	4363	8333	3540	3752	7292
B	2228	2248	4476	2004	1962	3966
LH	2006	1741	3747	1685	1679	3364
K	2511	2606	5117	2159	2254	4413
AA	782	901	1683	978	978	1956
A.DH	1759	1711	3470	1274	1311	2585
V	323	330	653	263	289	552
M	1092	1209	2301	863	1038	1901
F	1184	1045	2229	1034	767	1801
DH	1260	1348	2608	1020	1138	2158
TH	2374	2432	4806	2050	2055	4105
L	2630	2677	5307	2080	2180	4260
GA	1337	1389	2726	1314	1345	2659
GDH	2058	2066	4124	1326	1396	2722
Gn	1729	1831	3560	815	901	1716
S	1825	1818	3643	1512	1423	2935
Male' Schools	5387	5423	10810	5020	5120	10140
Health Centers	3762	3725	7487	578	724	1302
<b>Sub total</b>	<b>50174</b>	<b>50784</b>	<b>100958</b>	<b>38084</b>	<b>39712</b>	<b>77796</b>
<b>Population</b>	75503	75503	151006	75503	75503	151006
<b>%</b>	<b>66.45</b>	<b>67.26</b>	<b>66.86</b>	<b>50.44</b>	<b>52.60</b>	<b>51.52</b>

**TABLE 50: VACCINE REFUSALS REPORTED FROM HEALTH FACILITIES**

Atoll	2007		2008		2009		2010		2011		2012	
SEX	M	F	M	F	M	F	M	F	M	F	M	F
Male'					2				1	2		
Ha												
HDH						1						
SH					1			1		2		
N												
R												
B	1		1	1								
LH												
K												
AA			1		1	1					3	4
ADH												1
Vaavu												
Meemu												
Faafu					1	2				1		
Dhaal												
Thaa												
Laam												
GA												
GDH												
GN												
Seenu						1				1	1	
<b>Total</b>	<b>1</b>		<b>2</b>	<b>1</b>	<b>5</b>	<b>5</b>		<b>1</b>	<b>1</b>	<b>6</b>	<b>4</b>	<b>5</b>

TABLE 60: NUTRITION STATUS OF CHILDREN UNDER 5 YEARS OF AGE

Year	Source	Stunting (<-2SD)	Wasting (<-2SD)	Underweight (<-2SD)
		Height-for-age	Weight-for-Height	Weight-for-age
1996	MICS-1	30	17	43
2001	MICS-2	24.8	13.2	30.4
2005	KAP SURVEY	17	13	21.0
2009	MDHS	18.9	10.6	17.3

TABLE 61: PERCENTAGE DISTRIBUTION OF CHILDREN EXCLUSIVELY BREASTFED BY COMPLETED AGE IN MONTHS - MICS 2001

Completed Breast Feeding (In months)	Percent
1 Month	5.7 %
2 Months	10.7 %
3 Months	14.1 %
4 Months	27.3 %
5 Months	4.7 %
6 Months	10.4 %
Number of Children	389

Source: Multiple Indicator Cluster Survey, 2001, Ministry of Health

TABLE 62: DISTRIBUTION OF PREVALENCE OF EXCLUSIVE BREASTFEEDING

Region	North		North Central		Central		South Central		South		Malé		Total	
	Boy	Girl	Boy	Girl	Boy	Girl	Boy	Girl	Boy	Girl	Boy	Girl	Boy	Girl
<b>Number</b>	<b>133</b>	<b>173</b>	<b>149</b>	<b>190</b>	<b>161</b>	<b>173</b>	<b>159</b>	<b>186</b>	<b>138</b>	<b>117</b>	<b>193</b>	<b>193</b>	<b>933</b>	<b>1032</b>
<b>Never exclusively Breastfed</b>	2.3	0.6	1.3	0.5	2.5	0.0	0.0	0.5	2.9	0.9	1.6	0.5	1.7	0.5
<b>Up to 4 months</b>	79.7	82.7	77.9	73.2	80.7	80.3	78.6	83.3	75.4	70.1	76.7	71.5	78.1	77.1
<b>Up to 6 months</b>	57.9	61.3	56.4	50.5	50.9	51.4	51.6	51.1	51.4	47.9	45.6	42.5	51.9	50.8
<b>&gt;6 months</b>	3.0	3.5	4.7	2.6	2.5	2.3	1.3	2.7	0.7	1.7	1.0	2.1	2.1	2.5
<b>Mean months (SD)</b>	4.9 (1.7)	4.9 (1.8)	4.7 (2.1)	4.5 (2.1)	4.8 (1.7)	4.8 (1.7)	4.7 (1.7)	4.8 (1.7)	4.6 (1.9)	4.3 (2.1)	4.5 (1.9)	4.3 (2.0)	4.7 (1.8)	4.6 (1.9)

Source: National Micronutrient Survey, 2007, Ministry of Health

TABLE 51: PREVALENCE OF NCD RISK - 2004

Risk factors	Combined (%)	Men (%)	Women (%)	p value
<b>Current daily smoking (n = 2,028)</b>	24.8	39.9	9.6	0.0001
<b>Inadequate consumption of fruits &amp; vegetables (&lt; 5 servings) (n = 2,024)</b>	97.3	96.6	97.9	0.588
<b>Inactive in all domains of physically activity (n = 2,028)</b>	30.2	36.8	24.3	0.0001
<b>Overweight (BMI*<math>\geq</math>23) (n = 2,019)</b>	63.3	60.8	65.5	0.0289
<b>Overweight (BMI<math>\geq</math>25) (n = 2,019)</b>	43.5	38.1	48.1	0.0001
<b>Abdominal obesity (WC@ &gt; 90 cm in men &amp; &gt; 80 cm in women) (n = 2,004)</b>	40	24.2	54.1	0.0001
<b>Hypertension (<math>\geq</math>140/90 or on drugs) (n = 2,015)</b>	31.5	29.7	32.9	0.1255
<b>Diabetes mellitus (FBG\$ <math>\geq</math> 7.0 mmol/dl) (n = 1,556)</b>	4.5	4.3	4.7	0.7049
<b>Impaired fasting glycemia (FBG\$ <math>\geq</math> 6.1 - 7.0 mmol/dl) (n = 1,556)</b>	3.04	2.3	3.7	0.11
<b>Hypercholesterolemia (<math>\geq</math> 5.2 mmol / dl) (n = 1,556)</b>	54.4	53.7	54.9	0.6362
<b>Hypertriglyceridemia (<math>\geq</math> 1.73 mmol/dl) (n = 1,546)</b>	22.1	28.2	16.6	0.0001
<b>Low HDL# cholesterol (&lt; 1.04 mmol/dl among men &amp; &lt;1.30 among women) (n = 1,541)</b>	49.1	41.1	56.3	0.0001

Source: NCD Risk Factor Survey ,2004, Ministry of Health

- \* - BMI – Body Mass Index
- @ - WC – Waist Circumference
- \$ - FBG - Fasting blood Glucose
- # - High Density Cholesterol

TABLE 52: COMPARISON OF REPRODUCTIVE HEALTH RELATED INDICATORS - 1999, 2004, 2007 & 2009

Indicators	1999	2004	2007	2009
<b>At least one ANC visit during pregnancy</b>	88%	99%	99.90%	87%
<b>Four or more ANC visits during pregnancy</b>	62%	91%	93.20%	85%
<b>Skilled Birth Attendance Rate</b>	...	85%	...	94.80%
<b>Postnatal care coverage (contact with health care provider within six weeks following delivery)</b>	...	60%	...	...
<b>Contraceptive Prevalence Rate (All methods including traditional methods)</b>	42%	39%	...	34.70%
<b>Contraceptive Prevalence Rate (Modern methods of contraception)</b>	32%	34%	...	27.00%
<b>Unmet Need for Family Planning</b>	42%	37%	...	28.10%

Source: Reproductive Health Survey 1999 & 2004, National Micronutrient Survey 2007, Maldives Demographic Health Survey 2009, Ministry of Health

... Not Available

**TBALE 53: ANAEMIA AMONG WOMEN –MICS 2001**

	Percentage of women with any anaemia	Mild Anaemia <sup>1</sup>	Moderate Anaemia <sup>2</sup>	Severe Anaemia <sup>3</sup>	Number of Women
<b>Pregnant</b>	55.4%	31.1%	23.0%	1.4%	74
<b>Not pregnant</b>	49.6%	39.6%	9.1%	0.9%	1287

Source: Multiple Indicator Cluster Survey, 2001, Ministry of Health

<sup>1</sup>Mild Anaemia (10.0-10.9 grams per decilitre (g/dl) for pregnant women and 10.0-11.9 (g/dl) for non pregnant women).

<sup>2</sup>Moderate Anaemia (7.0-9.9 grams per decilitre (g/dl) for all women).

<sup>3</sup>Severe Anaemia (less than 7.0 grams per decilitre (g/dl) for all women).

**TABLE 54: ANAEMIA AMONG WOMEN – NMS 2007**

Type of Anaemia	Anaemia Prevalence (percentage)
<b>Valid N</b>	1284
<b>Moderate Anaemia<sup>1</sup></b>	15.1%
<b>Severe Anaemia<sup>2</sup></b>	0.3%

Source: National Micronutrient Survey ,2007, Ministry of Health

<sup>1</sup> Moderate Anaemia (7.0-10.9 grams per decilitre (g/dl))

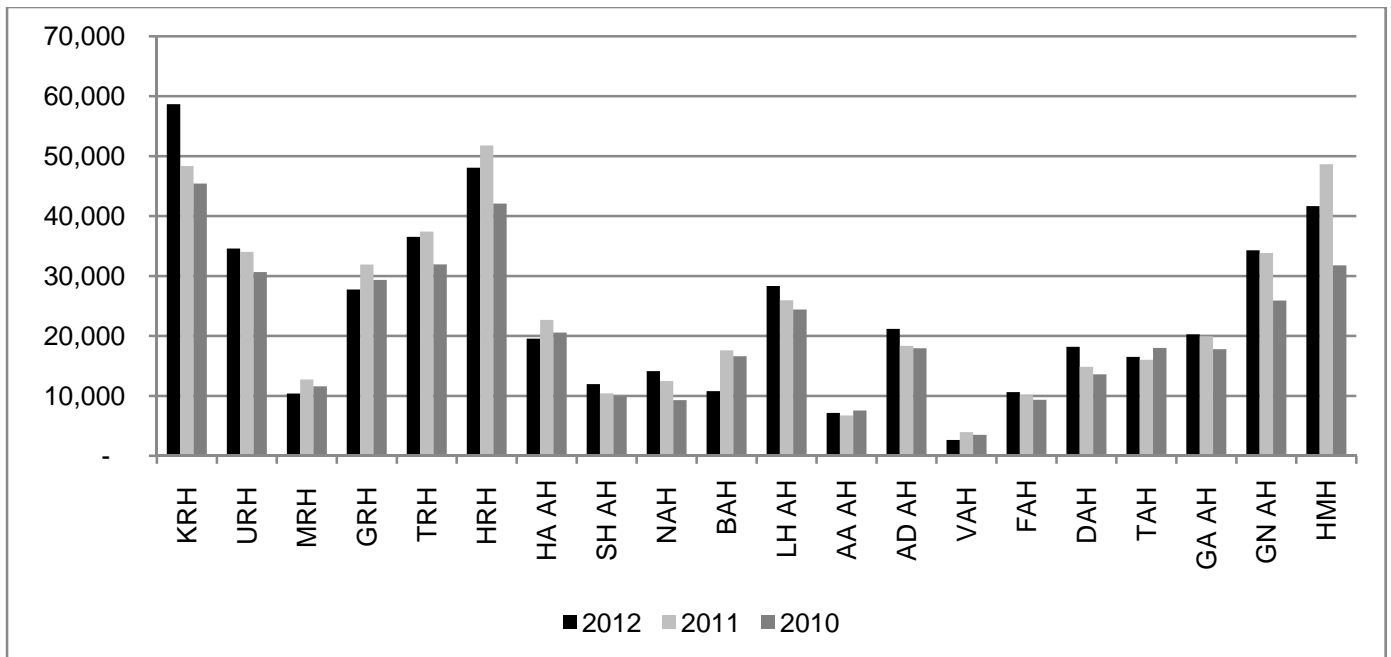
<sup>2</sup>Severe Anaemia (less than 7.0 grams per decilitre (g/dl))

# *Hospital Statistics*



## HOSPITAL STATISTICS

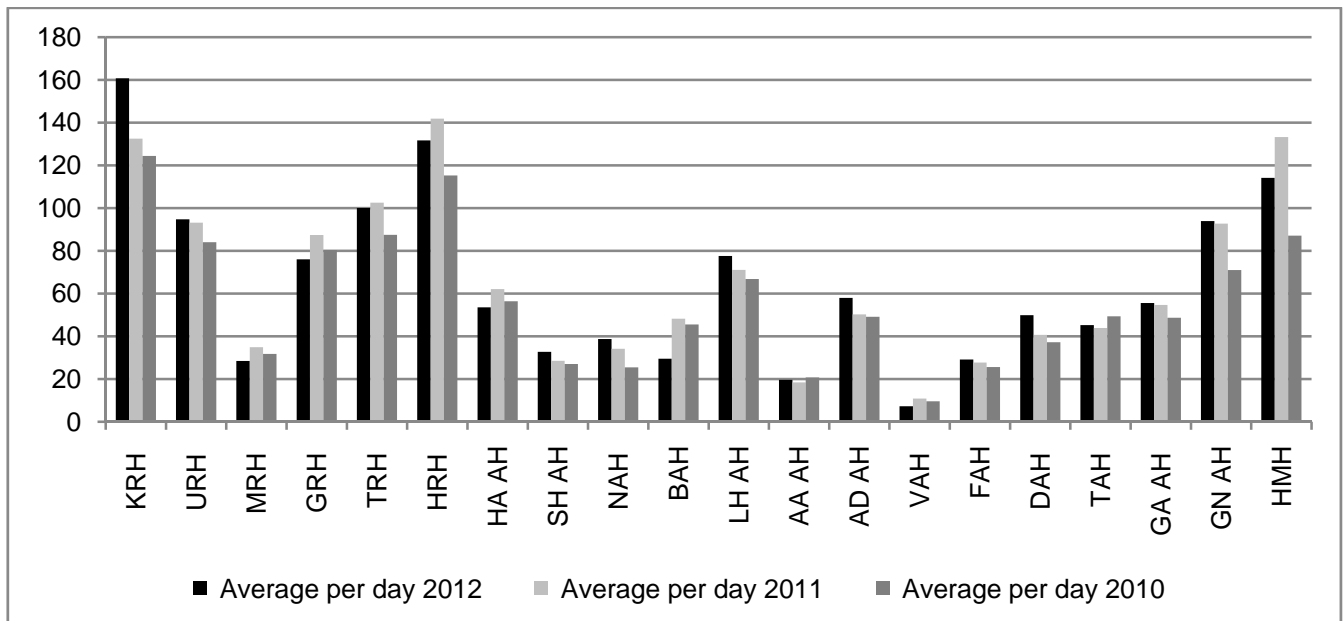
*GRAPH 21 : NUMBER OF OUTPATIENT VISITS BY HOSPITAL 2010 - 2012*



Source: Ministry of Health, 2012

Note: Bars are not visible for some hospital because data for those hospitals are not available

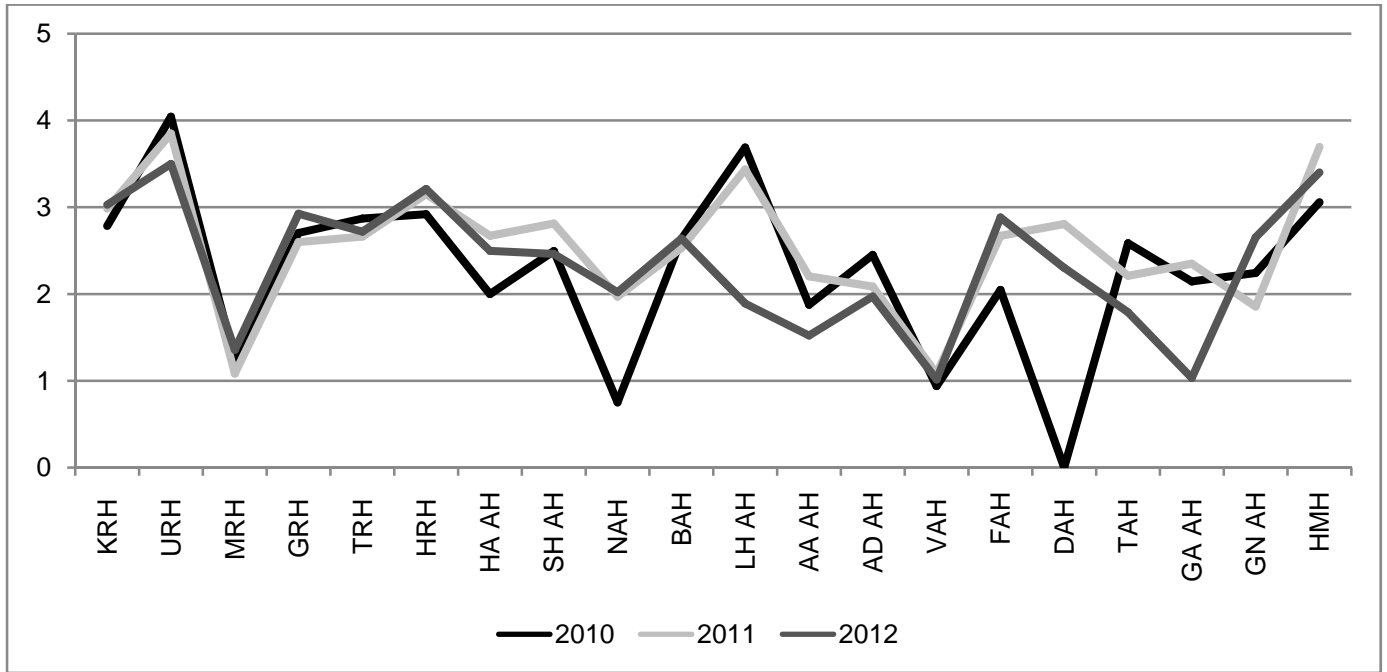
*GRAPH 22 : AVERAGE NUMBER OF OUTPATIENTS PER DAY BY HOSPITAL 2010 - 2012*



Source: Ministry of Health, 2012

Note: Bars are not visible for some hospital because data for those hospitals are not available

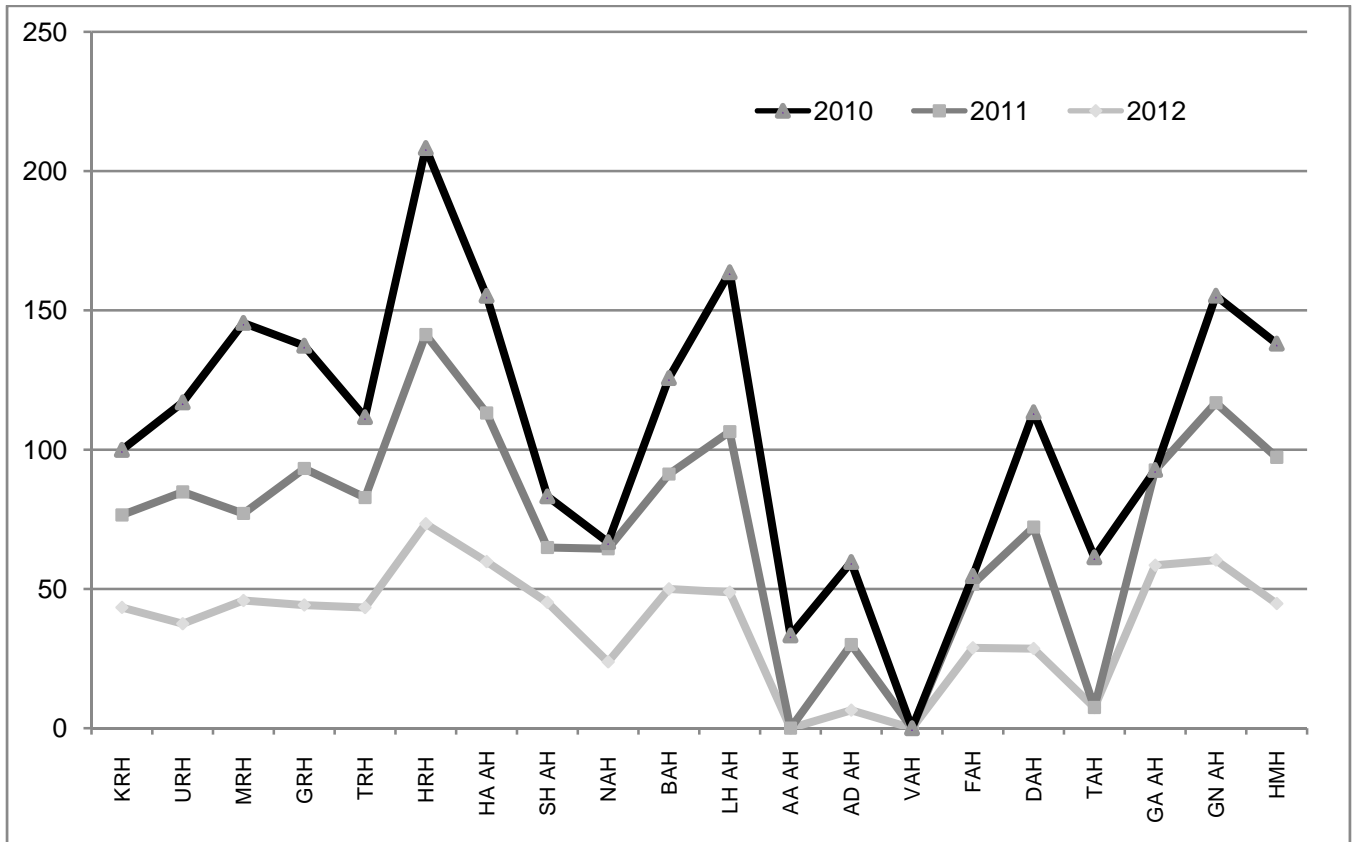
GRAPH 23: AVERAGE LENGTH OF STAY BY HOSPITAL 2010 - 2012



Source: Ministry of Health, 2012

Note: trend lines are touching "0" because data for those hospitals are not available

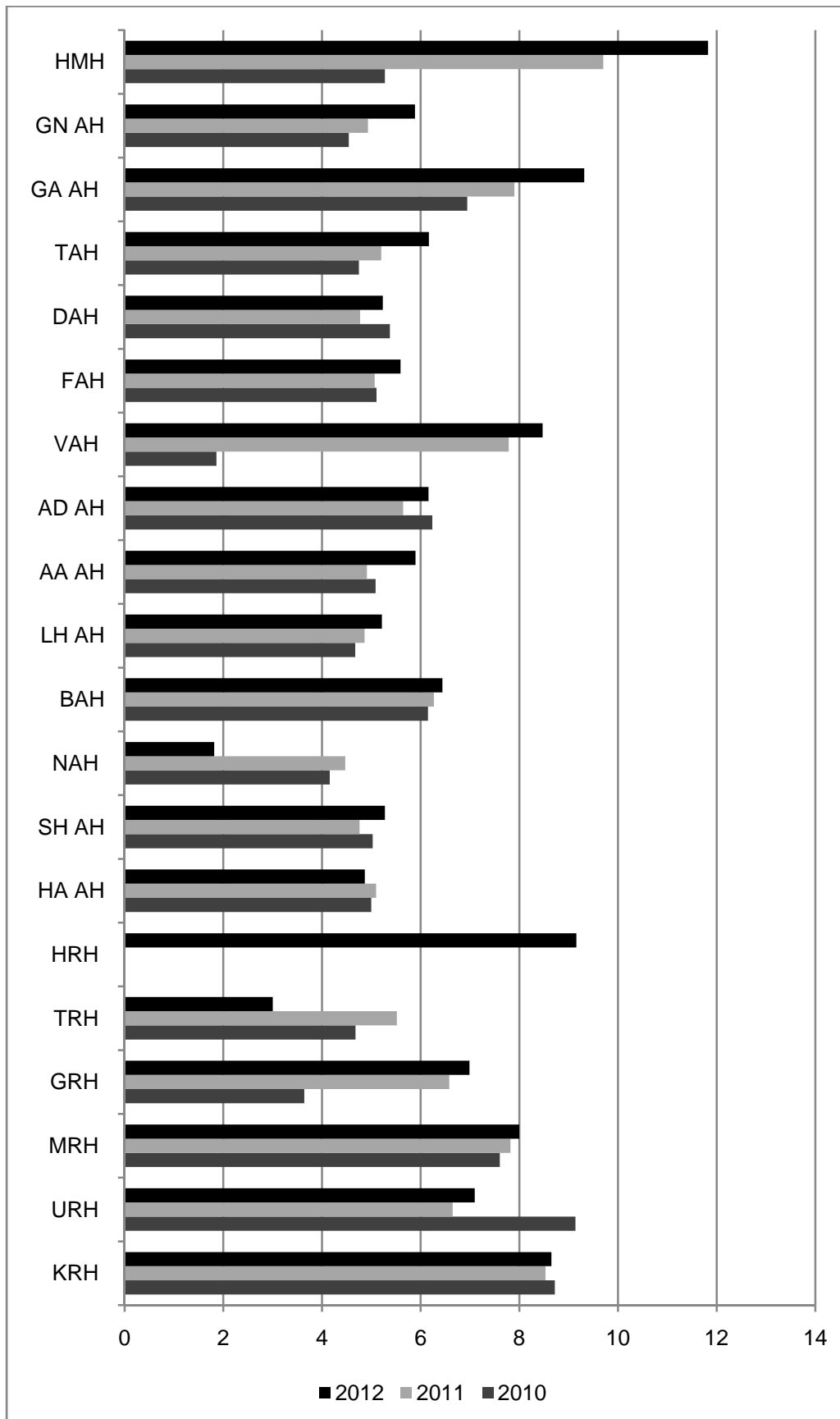
GRAPH 24: LSCS PERCENTAGE BY HOSPITAL 2010 - 2012



Source: Ministry of Health, 2012

Note: trend lines are touching "0" and breaks in line because data for those hospitals are not available, also for LSCS there were no LSCSs done in those hospitals

GRAPH 25: NUMBER OF INVESTIGATIONS PER PATIENT, BY HOSPITALS 2010 - 2012



Source: Ministry of Health, 2012

Note: Bars are not visible for some hospital because data for those hospitals are not available

TABLE 55: NUMBER OF OUTPATIENT VISITS BY HOSPITAL 2009 - 2012

Hospital	2009	2010	2011	2012
<i>Kulhudhufushi Regional Hospital</i>	45833	48605	48357	58672
<i>Ungoofaaruu Regional Hospital</i>	22889	23413	34017	34599
<i>Muli Regional Hospital</i>	13242	12814	12752	10399
<i>Gan Regional Hospital</i>	25306	29093	31908	27761
<i>Thinadhoo Regional Hospital</i>	24790	34334	37430	36541
<i>Hithadhoo Regional Hospital</i>	...	45405	51786	48075
<i>HaaAlif Atoll Hospital</i>	20755	22828	22677	19550
<i>Shaviyani Atoll Hospital</i>	1831	10787	10428	11953
<i>Noonu Atoll Hospital</i>	12179	12491	12476	14137
<i>Baa Atoll Hospital</i>	15419	16509	17613	10784
<i>Lhaviyani Atoll Hospital</i>	25907	23481	25951	28335
<i>AlifAlif Atoll Hospital</i>	8064	9153	6735	7154
<i>AlifDhaalu Atoll Hospital</i>	14610	16165	18340	21169
<i>Vaavu Atoll Hospital</i>	4112	5098	3955	2647
<i>Faafu Atoll Hospital</i>	9751	10144	10110	10633
<i>Dhaalu Atoll Hospital</i>	15445	11942	14851	18201
<i>Thaa Atoll Hospital</i>	14849	15002	16024	16503
<i>GaafAlif Atoll Hospital</i>	18876	20688	19961	20280
<i>Gnaviyani Atoll Hospital</i>	26740	31129	33851	34297
<i>Hulhumale' Hospital</i>	...	21861	48653	41667

Source: Ministry of Health, 2012

... data not available

Note: this table is based on data provided by hospitals

TABLE 56: AVERAGE NUMBER OF OUTPATIENT VISITS PER DAY, BY HOSPITAL, 2009 - 2012

Hospital	2009	2010	2011	2012
<i>Kulhudhufushi Regional Hospital</i>	126	133	132	161
<i>Ungoofaaruu Regional Hospital</i>	63	64	93	95
<i>Muli Regional Hospital</i>	36	35	35	28
<i>Gan Regional Hospital</i>	69	80	87	76
<i>Thinadhoo Regional Hospital</i>	68	94	103	100
<i>Hithadhoo Regional Hospital</i>	...	124	142	132
<i>HaaAlif Atoll Hospital</i>	57	63	62	54
<i>Shaviyani Atoll Hospital</i>	5	30	29	33
<i>Noonu Atoll Hospital</i>	33	34	34	39
<i>Baa Atoll Hospital</i>	42	45	48	30
<i>Lhaviyani Atoll Hospital</i>	71	64	71	78
<i>AlifAlif Atoll Hospital</i>	22	25	18	20
<i>AlifDhaalu Atoll Hospital</i>	40	44	50	58
<i>Vaavu Atoll Hospital</i>	11	14	11	7
<i>Faafu Atoll Hospital</i>	27	28	28	29
<i>Dhaalu Atoll Hospital</i>	42	33	41	50
<i>Thaa Atoll Hospital</i>	41	41	44	45
<i>GaafAlif Atoll Hospital</i>	52	57	55	56
<i>Gnaviyani Atoll Hospital</i>	73	85	93	94
<i>Hulhumale' Hospital</i>	...	60	133	114

Source: Ministry of Health, 2012

... data not available

Note: this table is based on data provided by hospitals

**TABLE 57: TOTAL NUMBER OF INPATIENTS, BY HOSPITAL, 2009 - 2012**

Hospital	2009	2010	2011	2012
<i>Kulhudhufushi Regional Hospital</i>	2461	2620	2911	3586
<i>Ungoofaaruu Regional Hospital</i>	1018	1317	1444	1206
<i>Muli Regional Hospital</i>	523	396	411	334
<i>Gan Regional Hospital</i>	1672	1481	2303	1526
<i>Thinadhoo Regional Hospital</i>	1887	2395	2649	2088
<i>Hithadhoo Regional Hospital</i>	...	3209	3572	2783
<i>HaaAlif Atoll Hospital</i>	816	1204	1108	823
<i>Shaviyani Atoll Hospital</i>	67	238	547	398
<i>Noonu Atoll Hospital</i>	505	341	674	859
<i>Baa Atoll Hospital</i>	762	630	648	543
<i>Lhaviyani Atoll Hospital</i>	895	873	1014	1164
<i>AlifAlif Atoll Hospital</i>	367	249	221	305
<i>AlifDhaalu Atoll Hospital</i>	712	710	592	62
<i>Vaavu Atoll Hospital</i>	126	195	109	75
<i>Faafu Atoll Hospital</i>	410	525	456	358
<i>Dhaalu Atoll Hospital</i>	633	567	615	911
<i>Thaa Atoll Hospital</i>	642	664	765	802
<i>GaafAlif Atoll Hospital</i>	879	796	698	682
<i>Gnaviyani Atoll Hospital</i>	1701	1859	2174	1570
<i>Hulhumale' Hospital</i>	...	2516	1368	1334

Source: Ministry of Health, 2012

... data not available

Note: this table is based on data provided by hospitals

TABLE 58: AVERAGE HOSPITAL LENGTH OF STAY, BY HOSPITAL, 2009 - 2012

Hospital	2009	2010	2011	2012
<i>Kulhudhufushi Regional Hospital</i>	3	3	3	3
<i>Ungoofaaru Regional Hospital</i>	3	4	4	4
<i>Muli Regional Hospital</i>	3	1	1	1
<i>Gan Regional Hospital</i>	3	3	3	3
<i>Thinadhoo Regional Hospital</i>	3	3	3	3
<i>Hithadhoo Regional Hospital</i>	3	3	3	3
<i>HaaAlif Atoll Hospital</i>	3	2	3	2
<i>Shaviyani Atoll Hospital</i>	5	2	...	2
<i>Noonu Atoll Hospital</i>	2	...	2	2
<i>Baa Atoll Hospital</i>	3	...	3	3
<i>Lhaviyani Atoll Hospital</i>	3	4	3	2
<i>AlifAlif Atoll Hospital</i>	3	2	2	2
<i>AlifDhaalu Atoll Hospital</i>	2	2	2	2
<i>Vaavu Atoll Hospital</i>	1	1	1	1
<i>Faafu Atoll Hospital</i>	3	2	3	3
<i>Dhaalu Atoll Hospital</i>	3	0	3	2
<i>Thaa Atoll Hospital</i>	2	3	2	2
<i>GaafAlif Atoll Hospital</i>	2	2	2	1
<i>Gnaviyani Atoll Hospital</i>	2	2	2	3
<i>Hulhumale' Hospital</i>	...	3	4	3

Source: Ministry of Health, 2012

... data not available

Note: this table is based on data provided by hospitals

TABLE 59: AVERAGE BED OCCUPANCY RATE, BY HOSPITAL, 2009 - 2012

Hospital	2009	2010	2011	2012
<i>Kulhudhufushi Regional Hospital</i>	53	53	67	49
<i>Ungoofaaru Regional Hospital</i>	39	61	60	40
<i>Muli Regional Hospital</i>	15	...	6	6
<i>Gan Regional Hospital</i>	40	32	26	18
<i>Thinadhoo Regional Hospital</i>	32	33	41	31
<i>Hithadhoo Regional Hospital</i>	...	68	74	45
<i>HaaAlif Atoll Hospital</i>	12	16	9	14
<i>Shaviyani Atoll Hospital</i>	17	...	33	29
<i>Noonu Atoll Hospital</i>	16	...	22	11
<i>Baa Atoll Hospital</i>	33	...	29	19
<i>Lhaviyani Atoll Hospital</i>	32	39	41	27
<i>AlifAlif Atoll Hospital</i>	26	12	10	11
<i>AlifDhaalu Atoll Hospital</i>	31	28	20	16
<i>Vaavu Atoll Hospital</i>	10	...	5	2
<i>Faafu Atoll Hospital</i>	18	20	23	16
<i>Dhaalu Atoll Hospital</i>	12	...	11	17
<i>Thaa Atoll Hospital</i>	17	19	17	15
<i>GaafAlif Atoll Hospital</i>	16	12	11	9
<i>Gnaviyani Atoll Hospital</i>	44	44	35	30
<i>Hulhumale' Hospital</i>	...	18	24	20

Source: Ministry of Health, 2012

... data not available

Note: this table is based on data provided by hospitals



*Others*

## OTHERS

*TABLE 43: CONTRACEPTIVE USER RATE, 2001 - 2012*

Year	Republic			Malé			Atolls		
	Total	Male	Female	Total	Male	Female	Total	Male	Female
2001	20.4	22.8	77.2	15.6	18.9	81.1	22.3	23.9	76.1
2002	20.8	22.3	77.7	17.8	13.5	86.5	21.9	25.0	75.0
2003	22.1	21.1	78.9	20.0	13.7	86.3	23.2	23.4	76.6
2004	22.4	19.9	80.1	21.7	12.2	87.8	22.7	22.8	77.2
2005	22.0	20.0	80.0	22.4	10.5	89.5	21.9	23.5	76.5
2006	23.7	22.4	77.6	27.5	20.1	79.9	22.4	23.4	76.6
2007	22.5	16.4	83.7	25.0	7.7	92.3	21.6	20.1	80.0
2008	22.3	13.6	86.4	25.5	5.7	94.3	21.1	17.0	83.0
2009	15.1	25.5	74.5	7.9	16.9	83.1	19.2	27.4	72.6
2010	18.7	26.2	73.8	12.9	29.2	70.8	22.0	25.3	74.7
2011	21.4	5.2	16.2	10.7	2.4	8.3	27.2	6.7	20.5
2012	23.6	5.6	18.0	15.9	3.5	12.4	27.2	6.6	20.6

*Source: Health Protection Agency 2012*

TABLE 44: CONTRACEPTIVE USER RATE BY ATOLLS, 2008 - 2012

Atoll Name	2008	2009	2010	2011	2012
<i>HaaAlif</i>	14.7	14.3	38.3	21.2	29.5
<i>HaaDhaal</i>	19.8	40.8	21.9	34.7	31.5
<i>Shaviyani</i>	18.5	27.5	26.0	52.1	22.7
<i>Noonu</i>	17.7	16.1	32.4	42.9	27.2
<i>Raa</i>	22.2	18.3	19.7	38.2	30.9
<i>Baa</i>	22.7	20.8	20.1	25.3	35.6
<i>Lhaviyani</i>	26.2	38.5	37.2	28.8	24.0
<i>Kaafu</i>	20.7	2.6	14.1	43.6	42.9
<i>AlifuUthuru</i>	12.5	29.1	21.4	38.1	31.2
<i>AlifuDhekunu</i>	20.9	26.2	18.7	25	27
<i>Vaavu</i>	17.7	23.5	26.0	31.6	33.8
<i>Meemu</i>	38.5	21.5	35.7	17.1	24.9
<i>Faafu</i>	15.0	25.3	15.1	25.9	27.9
<i>Dhaal</i>	14.8	28.8	26.9	18.6	32.3
<i>Thaa</i>	14.8	12.0	18.1	26.8	22.6
<i>Laamu</i>	67.8	18.9	32.2	34.6	63.4
<i>GaafAlif</i>	11.9	17.9	9.9	15.7	14.8
<i>GaafDhaal</i>	13.5	12.3	19.0	18.8	26.9
<i>Gnaviyani</i>	20.4	8.6	7.6	10.1	10.8
<i>Seenu</i>	16.4	2.7	7.6	2.5	5.8
<i>Male'</i>	25.5	7.9	12.9	10.7	15.9
<i>Republic</i>	<b>22.3</b>	<b>15.1</b>	<b>18.7</b>	<b>21.4</b>	<b>23.6</b>

Source: Health Protection Agency 2012

**TABLE 45: STATISTICS OF ARRESTS MADE FOR DRUG CASES , 2001 - 2012**

Year	< 16 yrs	16 - 24 yrs	25 - 39 yrs	40 +	Total
2001	5	57	124	9	195
2002	11	212	164	29	416
2003	37	192	167	23	419
2004	12	390	361	34	797
2005	13	401	362	50	826
2006	14	603	605	78	1290
2007	16	832	757	84	1689
2008	24	1326	1135	133	2618
2009	23	863	811	123	1820
2010	16	567	465	112	1160
2011	26	755	515	157	1453
2012	37	855	975	206	2073

Source: Bureau of Crime Records / Maldives Police Services, 2012

**TABLE 46: IMPORTS OF TOBACCO, 2001 - 2012**

Year	Tobacco Leaves (Kgs)	Number of cigars	Number of cheroots	Number of cigarettes	Chewing tobacco by weight (Kgs)
2001	44,168.70	187,156	4,056,070	223,540,520	2,405.28
2002	45,533.88	315,080	251,900	229,788,400	8,398.13
2003	30,598.25	289,183	67,625	226,903,220	4,718.08
2004	63,056.02	226,473	3,878	256,586,880	7,900.91
2005	45,505.15	200,968	4,125	263,461,671	11,976.92
2006	36,034.29	836,168	786,000	255,544,900*	22,019.04
2007	24,493.13	316,207	27,157,100	286,444,050	17,949.77
2008	29,810.81	586,111	37,159,860	334,128,160	25,511.08
2009	10,654.61	366,317	30,775,600	348,020,191	24,325.16
2010	32,827.75	237,074	85,000	346,371,400	20,447.78
2011	21,879.40	331,789	7,000,000	454,893,880	30,280.85
2012	19953.78 *	2629692	57690875	402132400.00	24137.85

Source: Maldives Customs Service, 2012

\*Revised figure

Note: \* tobacco leaves includes smoking tobacco, pipe tobacco, tobacco, not stemmed/stripped & tobacco, partly or wholly stemmed /stripped  
other tobacco (excl smoking tobacco and pipe tobacco)

# *Appendices*

## APPENDIX

### PROJECTED MID YEAR POPULATION ESTIMATES BY AGE 2009-2015

Age Group	2009	2010	2011	2012	2013	2014	2015
<b>All ages</b>	<b>314,542</b>	<b>319,738</b>	<b>325,135</b>	<b>330,652</b>	<b>336,224</b>	<b>341,848</b>	<b>347,552</b>
0-4	28,508	29,492	30,568	32,019	33,143	33,931	34,447
5-9	27,393	26,871	26,588	26,644	27,144	28,071	29,250
10-14	33,445	31,897	30,479	29,233	28,169	27,305	26,729
15-19	39,817	38,900	37,768	36,442	34,948	33,373	31,841
20-24	39,633	40,331	40,698	40,715	40,383	39,734	38,819
25-29	31,311	33,543	35,480	37,135	38,492	39,525	40,228
30-34	22,752	23,683	25,033	26,764	28,882	31,202	33,430
35-39	19,972	20,473	20,990	21,515	22,024	22,644	23,576
40-44	17,526	17,992	18,440	18,878	19,344	19,832	20,332
45-49	15,377	15,673	16,035	16,423	16,857	17,326	17,795
50-54	11,499	12,669	13,604	14,295	14,761	15,078	15,381
55-59	6,640	7,130	7,851	8,761	9,904	11,145	12,282
60-64	5,507	5,560	5,673	5,813	6,002	6,290	6,764
65-69	5,425	5,294	5,198	5,090	5,037	5,037	5,095
70-74	4,895	4,985	4,995	4,882	4,768	4,664	4,575
75-79	2,730	2,993	3,332	3,474	3,619	3,754	3,867
80+	2,112	2,252	2,403	2,569	2,747	2,937	3,141

*Source: Statistical Year Book of Maldives 2011, Department of National Planning (from DNP website)*

### CENSUS POPULATION BY SEX 1990-2006

	1990	1995	2000	2006
<b>Both sexes</b>	213,215	244,814	270,101	298,968
<b>Male</b>	109,336	124,622	137,200	151,459
<b>Female</b>	103,879	120,192	132,901	147,509
<b>% Male</b>	51.28	50.9	50.8	50.66
<b>% Female</b>	48.72	49.1	49.2	49.33

*Source: Statistical Year Book of Maldives 2006, Ministry of Planning and National Development*

**POPULATION GROWTH RATE 1990-2006**

	1990	1995	2000	2006
<b>Population</b>	213,215	244,814	270,101	298,968
<b>Numerical Increase</b>	33,127	31,599	25,287	28,867
<b>Average Annual growth</b>	3.43	2.73	1.96	1.69

*Source: Analytical Report - Maldives Population and Housing Census 2006, Ministry of Planning and National Development*

**SUMMARY MEASURES OF FERTILITY BASED ON REPORTED BIRTH DATA FROM CENSUS, MALDIVES**

**1990, 2000 AND 2006**

	1990	2000	2006
<b>Fertility Index</b>			
<b>General Fertility Rate (GFR)</b>			
<b>Republic</b>	202.68	86.08	66.81
<b>Male'</b>	121.11	46.18	48.02
<b>Atolls</b>	235.02	103.66	80.74
<b>Total Fertility Rate (TFR)</b>			
<b>Republic</b>	6.40	2.84	2.15
<b>Male'</b>	3.88	1.58	1.47
<b>Atolls</b>	7.40	3.37	2.60
<b>Gross Reproduction Rate (GRR)</b>			
<b>Republic</b>	3.16	1.40	1.05
<b>Male'</b>	1.98	0.80	0.71
<b>Atolls</b>	3.63	1.65	1.28

*Source: Analytical Report - Maldives Population and Housing Census 2006, Ministry of Planning and National Development*

# References



## REFERENCES

- Department of National Planning (2011), Statistical Year Book of Maldives 2011, Male', Department of National Planning
- Ministry of Health (2004), Maldives Health Report 2004, Male', Ministry of Health
- Ministry of Health (2001), Multiple Indicator Cluster Survey 2001, Male', Ministry of Health
- Ministry of Health (2007), National Micronutrient Survey 2007, Male', Ministry of Health
- Ministry of Health (2004), NCD Risk Factors Survey 2004, Male', Ministry of Health
- Ministry of Health (1999), Reproductive Health Survey 1999, Male', Ministry of Health
- Ministry of Health (2004), Reproductive Health Survey 2004, Male', Ministry of Health
- Ministry of Health (2007), The Maldives Health Statistics 2007, Male', Ministry of Health
- Ministry of Health & Family (2009), The Maldives Health Statistics 2009, Male', Ministry of Health & Family
- Ministry of Health & Family (2010), The Maldives Health Statistics 2010, Male', Ministry of Health & Family
- Ministry of Health & Family (2011), The Maldives Health Statistics 2011, Male', Ministry of Health & Family
- Ministry of Health & Family (2012), The Maldives Health Statistics 2012, Male', Ministry of Health & Family
- Demographic and health survey 2009
- Ministry of Health (2011), Vital Statistics System Database 2011, Male', Ministry of Health
- Ministry of Planning & National Development (2006), Analytical Report – Maldives Population and Housing Census 2006, Male', Ministry of Planning & National Development
- Ministry of Health & Family (2009), Maldives Demographic and Health Survey 2009, Male', Ministry of Health & Family

**Ministry of Health**

Roashanee Building, Sosun Magu, Male', Republic of Maldives  
Email: [ppd@health.gov.mv](mailto:ppd@health.gov.mv), phone: +960 3328887, Fax: +960 3328889