

## EPIDEMIC ESTIMATES

	2010	2015	2018
<b>New HIV infections</b>			
New HIV infections (all ages)	2100 [1900–2300]	1200 [1100–1300]	900 [800–980]
New HIV infections (0–14)	<500 [<200– <500]	<200 [<200– <200]	<100 [<100– <200]
New HIV infections (women, 15+)	850 [740–940]	<500 [<500– <500]	<500 [<500– <500]
New HIV infections (men, 15+)	1000 [910–1100]	680 [600–740]	530 [<500–580]
HIV incidence per 1000 population	0.08 [0.07–0.09]	0.04 [0.04–0.05]	0.03 [0.03–0.03]
<b>AIDS-related deaths</b>			
AIDS-related deaths (all ages)	1400 [1200–1700]	1100 [920–1400]	910 [700–1200]
AIDS-related deaths (0–14)	<200 [<200– <200]	<100 [<100– <200]	<100 [<100– <100]
AIDS-related deaths (women, 15+)	<500 [<500– <500]	<500 [<200– <500]	<200 [<200– <500]
AIDS-related deaths (men, 15+)	1000 [840–1200]	850 [680–1100]	680 [540–910]
<b>People living with HIV</b>			
People living with HIV (all ages)	31 000 [27 000–36 000]	31 000 [27 000–36 000]	30 000 [26 000–34 000]
People living with HIV (0–14)	1400 [1300–1700]	1500 [1400–1800]	1400 [1200–1600]
People living with HIV (women, 15+)	9800 [8700–11 000]	11 000 [9900–13 000]	12 000 [10 000–13 000]
People living with HIV (men, 15+)	20 000 [17 000–24 000]	18 000 [16 000–21 000]	17 000 [15 000–20 000]
HIV prevalence (15–49)	0.2 [0.2–0.2]	0.2 [0.1–0.2]	0.1 [0.1–0.2]

## LAWS AND POLICIES

Laws criminalizing the transmission of, non-disclosure of or exposure to HIV transmission	Yes
Criminalization of sex work among consenting adults	Any criminalization or punitive regulation of sex work
Criminalization of same-sex sexual acts	Laws penalizing same-sex sexual acts have been decriminalized or never existed
Drug use or possession for personal use is an offence	Possession of drugs for personal use or drug use and/or consumption are specified as criminal offences
Criminalization of transgender people	Neither criminalized nor prosecuted
Laws or policies restricting the entry, stay and residence of people living with HIV	No
Parental consent for adolescents to access HIV testing	Yes, for adolescents younger than 16 years
Spousal consent for married women to access sexual and reproductive health services	No
Mandatory HIV testing for marriage, work or residence permits or for certain groups	No

## STIGMA AND DISCRIMINATION

	2011	2016
Percentage of women and men aged 15–49 years who report discriminatory attitudes towards people living with HIV	28.3	38

Percentage of people living with HIV denied health services because of their HIV status in the last 12 months

Percentage of people living with HIV who reported a health-care professional told others about their HIV status without their consent

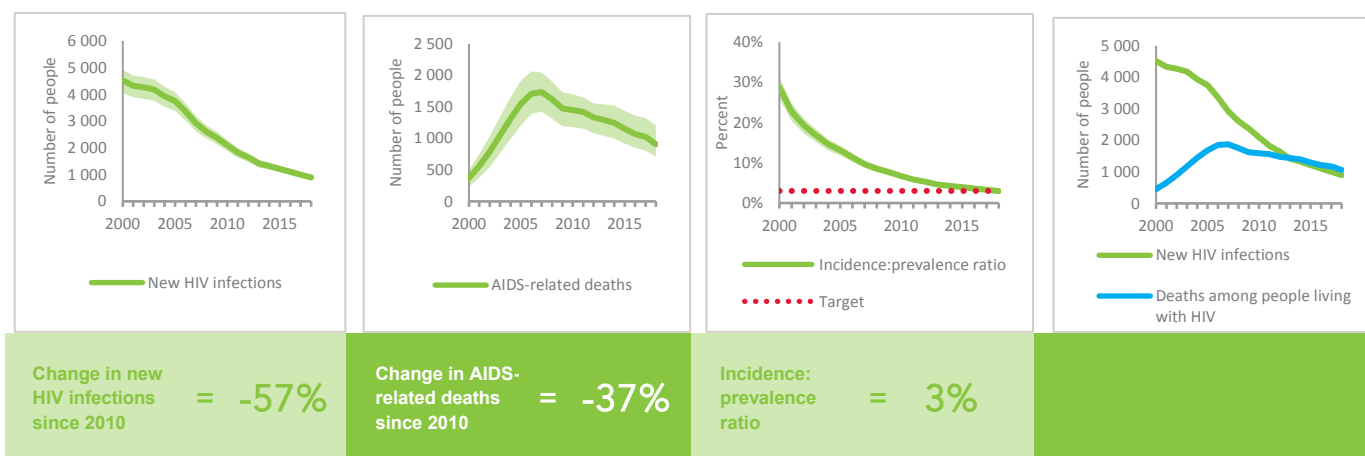
## VIOLENCE

	2011	2016
Proportion of ever-married or partnered women aged 15–49 years who experienced physical or sexual violence from a male intimate partner in the past 12 months	14.3	11.2

## EXPENDITURES

	Financing sources					Total
	Domestic private	Domestic public	International: PEPFAR	International: Global Fund	International: all others	
Last available report: 2018	...	\$2 335 783	...	\$10 571 595	\$2 852 016	\$15 759 395

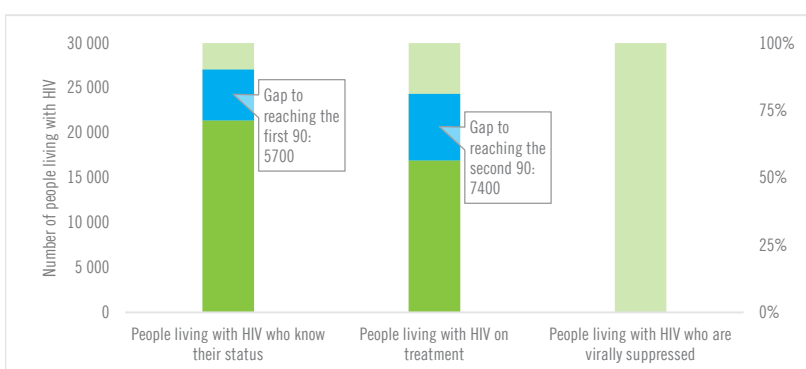
## EPIDEMIC TRANSITION METRICS



## KEY POPULATIONS

	Sex workers	Gay men and other men who have sex with men	People who inject drugs	Transgender people	Prisoners
Estimated size of population	...	...	...	...	22 000
HIV prevalence	4.2%	5.0%	8.8%	8.5%	...
Know their HIV status	95.2%	89.6%	98.3%	89.4%	...
Antiretroviral therapy coverage	...	...	...	...	...
Condom use	88.2%	94.6%	48.9%	91.5%	...
Coverage of HIV prevention programmes	34.8%	79.7%	67.8%	29.8%	...
Avoidance of health care because of stigma and discrimination	...	...	...	...	...
Expenditures (2014)	\$200 879	\$875 761	\$1 825 145		

## HIV TESTING AND TREATMENT CASCADE



	2010	2018
All ages	71% [63–82%]	56% [50–65%] 16 900
Children (0–14)	92% [81–>95%]	91% [80–>95%] 1300
Women (15+)	71% [63–80%]	66% [58–74%] 7600
Men (15+)	70% [61–81%]	47% [41–55%] 8000

## ELIMINATION OF MOTHER-TO-CHILD TRANSMISSION

	2010	2018
Percentage of pregnant women living with HIV accessing antiretroviral medicines	14% [11–16%]	51% [43–60%]
Early infant diagnosis	3.3% [2.7–4.1%]	70.8% [59.6–83.3%]

## HIV COMORBIDITIES

Estimated number of incident tuberculosis cases among people living with HIV (2017)	870 [480–1400]
People living with HIV who started TB preventive therapy (2017)	...
Cervical cancer screening of women living with HIV	...
People coinfectd with HIV and hepatitis B virus receiving combined treatment	...
People coinfectd with HIV and hepatitis C virus starting hepatitis C treatment	...

## HIV PREVENTION

Adults aged 15+ years with unsuppressed viral load	...
Knowledge of HIV prevention among young people aged 15–24 years (2016)	
— Women	20.7%
— Men	27.1%
Condom use at last sex with a non-marital, non-cohabiting partner (2016)	
— Women	...
— Men	67.6%
Women aged 15–49 years who have their demand for family planning satisfied by modern methods (2016)	56.3%
Men aged 15–49 years who are circumcised	Not applicable
Voluntary medical male circumcisions performed according to national standards	Not applicable
People who received PrEP at least once during the reporting period	...
Harm reduction	
— Use of sterile injecting equipment at last injection (2017)	97.6%
— Needles and syringes distributed per person who injects (2018)	85
— Coverage of opioid substitution therapy (2018)	2.8%
— Naloxone available (2019)	No
— Safe injection rooms available (2019)	No