

EPIDEMIC ESTIMATES

	2010	2015	2018
New HIV infections			
New HIV infections (all ages)	16 000 [14 000–17 000]	9700 [8700–11 000]	6400 [5700–7000]
New HIV infections (0–14)	<500 [<500–500]	<100 [<100– <200]	<100 [<100– <100]
New HIV infections (women, 15+)	5300 [4700–6000]	2800 [2500–3100]	1900 [1700–2100]
New HIV infections (men, 15+)	9900 [8800–11 000]	6800 [6100–7500]	4400 [3900–4800]
HIV incidence per 1000 population	0.24 [0.21–0.26]	0.14 [0.13–0.16]	0.09 [0.08–0.1]
AIDS-related deaths			
AIDS-related deaths (all ages)	27 000 [19 000–36 000]	21 000 [14 000–31 000]	18 000 [13 000–26 000]
AIDS-related deaths (0–14)	<500 [<500– <500]	<200 [<200– <500]	<100 [<100– <200]
AIDS-related deaths (women, 15+)	9100 [6500–12 000]	7900 [5000–12 000]	7600 [5400–12 000]
AIDS-related deaths (men, 15+)	17 000 [12 000–25 000]	13 000 [8700–19 000]	11 000 [7600–14 000]
People living with HIV			
People living with HIV (all ages)	580 000 [490 000–690 000]	520 000 [460 000–610 000]	480 000 [420 000–550 000]
People living with HIV (0–14)	11 000 [8700–13 000]	5900 [4700–7100]	3200 [2600–3800]
People living with HIV (women, 15+)	250 000 [210 000–290 000]	230 000 [200 000–260 000]	210 000 [180 000–240 000]
People living with HIV (men, 15+)	320 000 [270 000–390 000]	290 000 [250 000–340 000]	270 000 [240 000–310 000]
HIV prevalence (15–49)	1.5 [1.2–1.8]	1.3 [1.1–1.5]	1.1 [0.9–1.3]

LAWS AND POLICIES

Laws criminalizing the transmission of, non-disclosure of or exposure to HIV transmission	...
Criminalization of sex work among consenting adults	...
Criminalization of same-sex sexual acts	Laws penalizing same-sex sexual acts have been decriminalized or never existed
Drug use or possession for personal use is an offence	...
Criminalization of transgender people	...
Laws or policies restricting the entry, stay and residence of people living with HIV	No
Parental consent for adolescents to access HIV testing	...
Spousal consent for married women to access sexual and reproductive health services	...
Mandatory HIV testing for marriage, work or residence permits or for certain groups	...

STIGMA AND DISCRIMINATION

	2013	2015
Percentage of women and men aged 15–49 years who report discriminatory attitudes towards people living with HIV (2013 refers to women only)	29.2	26.1

Percentage of people living with HIV denied health services because of their HIV status in the last 12 months

Percentage of people living with HIV who reported a health-care professional told others about their HIV status without their consent

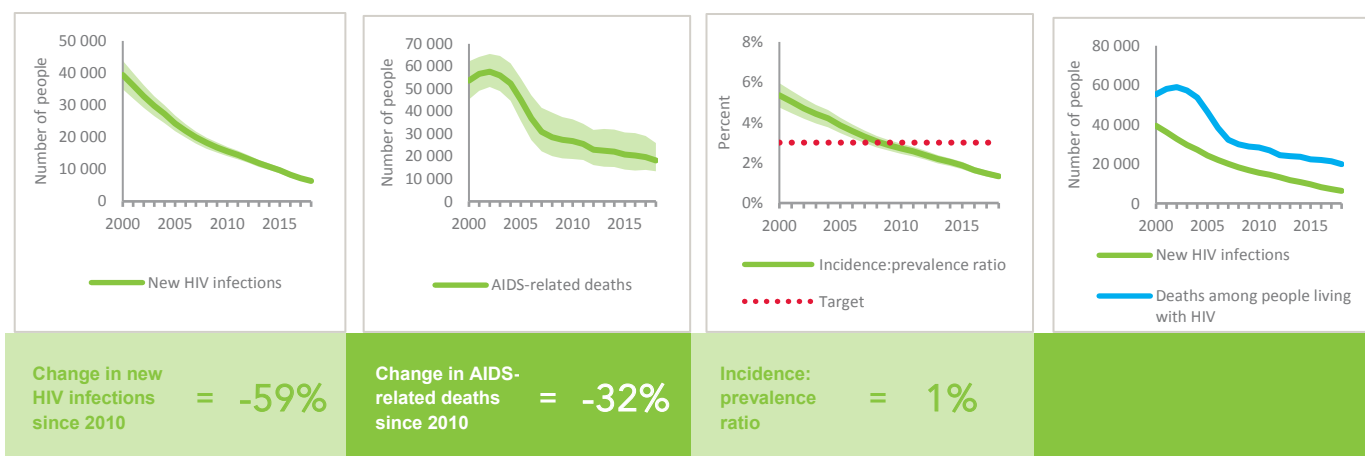
VIOLENCE

Proportion of ever-married or partnered women aged 15–49 years who experienced physical or sexual violence from a male intimate partner in the past 12 months

EXPENDITURES

	Financing sources					Total
	Domestic private	Domestic public	International: PEPFAR	International: Global Fund	International: all others	
Last available report: 2013	\$76 396	\$256 685 666	\$1 863 515	\$27 326 826	\$415 073	\$287 278 782

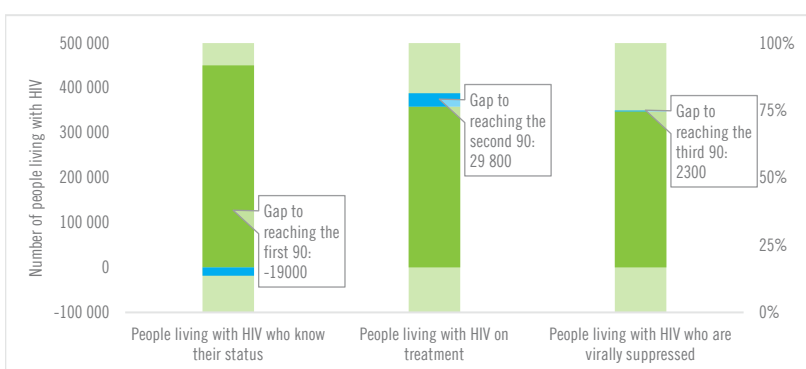
EPIDEMIC TRANSITION METRICS



KEY POPULATIONS

	Sex workers	Gay men and other men who have sex with men	People who inject drugs	Transgender people	Prisoners
Estimated size of population	370 000
HIV prevalence	1.7%	11.9%	20.5%	11.0%	1.2%
Know their HIV status	52.8%	42.9%	...	41.6%	...
Antiretroviral therapy coverage
Condom use	83.1%	82.7%	51.2%	76.9%	...
Coverage of HIV prevention programmes	70.4%	57.9%	...	50.0%	...
Avoidance of health care because of stigma and discrimination	7.7%	5.6%	...	6.2%	...
Expenditures (0)

HIV TESTING AND TREATMENT CASCADE



	94% [82- >95%]	75% [66-86%] 359 000	73% [64-84%]
All ages			
Children (0-14)	84% [69- >95%]	83% [68- >95%] 2600	74% [60-88%]
Women (15+)	94% [81- >95%]	77% [67-88%] 161 000	75% [65-86%]
Men (15+)	94% [83- >95%]	73% [65-85%] 195 000	71% [63-82%]

ELIMINATION OF MOTHER-TO-CHILD TRANSMISSION

	2010	2018
Percentage of pregnant women living with HIV accessing antiretroviral medicines	94% [78- >95%]	>95% [81- >95%]
Early infant diagnosis	43.7% [37.2-52.9%]	>95% [82.7- >95%]

HIV COMORBIDITIES

Estimated number of incident tuberculosis cases among people living with HIV (2017)	11 000 [8500 -15 000]
People living with HIV who started TB preventive therapy (2017)	...
Cervical cancer screening of women living with HIV	...
People coinfectd with HIV and hepatitis B virus receiving combined treatment	...
People coinfectd with HIV and hepatitis C virus starting hepatitis C treatment	...

HIV PREVENTION

Adults aged 15+ years with unsuppressed viral load	0.2%
Knowledge of HIV prevention among young people aged 15-24 years (2016)	
— Women	46%
— Men	45.1%
Condom use at last sex with a non-marital, non-cohabiting partner (2017)	
— Women	76.8%
— Men	75%
Women aged 15-49 years who have their demand for family planning satisfied by modern methods (2016)	96.5%
Men aged 15-49 years who are circumcised	Not applicable
Voluntary medical male circumcisions performed according to national standards	Not applicable
People who received PrEP at least once during the reporting period (2018)	2888
Harm reduction	
— Use of sterile injecting equipment at last injection (2014)	95.3%
— Needles and syringes distributed per person who injects (2018)	10
— Coverage of opioid substitution therapy (2018)	5.3%
— Naloxone available (2019)	...
— Safe injection rooms available (2019)	...