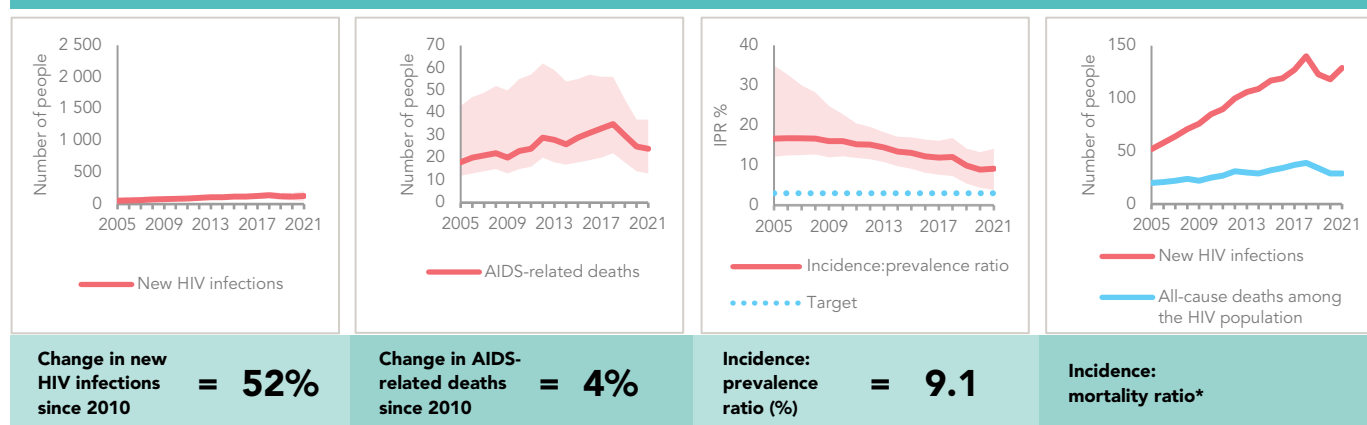


TIMOR-LESTE

EPIDEMIC ESTIMATES

	2010	2015	2021
New HIV infections			
New HIV infections (all ages)	<100 [<100– <200]	<200 [<100– <200]	<200 [<100– <500]
New HIV infections (0–14)	... [...–...]	... [...–...]	... [...–...]
New HIV infections (15–24)	<100 [<100– <100]	<100 [<100– <100]	<100 [<100– <100]
New HIV infections (women, 15+)	<100 [<100– <100]	<100 [<100– <100]	<100 [<100– <100]
New HIV infections (men, 15+)	<100 [<100– <100]	<100 [<100– <200]	<100 [<100– <200]
HIV incidence (all ages) per 1000 population	0.08 [0.06–0.11]	0.10 [0.07–0.13]	0.10 [0.04–0.15]
AIDS-related deaths			
AIDS-related deaths (all ages)	<100 [<100– <100]	<100 [<100– <100]	<100 [<100– <100]
AIDS-related deaths (0–14)	... [...–...]	... [...–...]	... [...–...]
AIDS-related deaths (women, 15+)	<100 [<100– <100]	<100 [<100– <100]	<100 [<100– <100]
AIDS-related deaths (men, 15+)	<100 [<100– <100]	<100 [<100– <100]	<100 [<100– <100]
People living with HIV			
People living with HIV (all ages)	530 [<500–980]	890 [700–1200]	1400 [1000–1800]
People living with HIV (0–14)	... [...–...]	... [...–...]	... [...–...]
People living with HIV (women, 15+)	<200 [<200– <500]	<500 [<500– <500]	<500 [<500–530]
People living with HIV (men, 15+)	<500 [<500–660]	590 [<500–800]	940 [690–1200]
HIV prevalence (15–49)	<0.1 [<0.1–0.2]	0.1 [0.1–0.2]	0.2 [0.1–0.2]

EPIDEMIC TRANSITION METRICS

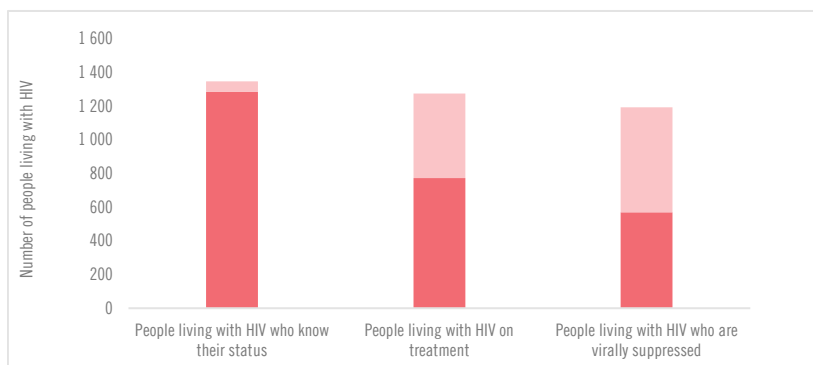


* The incidence:mortality ratio is not published if the country has not achieved antiretroviral therapy coverage of 91% or higher (the testing and treatment target for 2025).

EXPENDITURES

	Financing sources					Total
	Domestic private	Domestic public	International: PEPFAR	International: Global Fund	International: all others	
Last available report: 2009	...	US\$ 21 000	...	US\$ 1 743 620	US\$ 38 394	US\$ 1 803 014

HIV TESTING AND TREATMENT CASCADE



	91% [67–100%] 1285	55% [40–71%] 774	42% [31–54%] 571
All ages			
Children (0–14)	...% [...–...%] 48	...% [...–...%] 33	...% [...–...%] 25
Women (15+)	94% [71–100%] 394	51% [39–65%] 215	35% [27–45%] 148
Men (15+)	90% [65–100%] 843	56% [41–73%] 526	45% [33–59%] 423

ELIMINATION OF VERTICAL TRANSMISSION

	2015	2021
Percentage of pregnant women living with HIV accessing antiretroviral medicines	...% [...–...%]	...% [...–...%]
Final vertical transmission rate including during breastfeeding	...% [...–...%]	...% [...–...%]
Early infant diagnosis	...% [...–...%]	...% [...–...%]